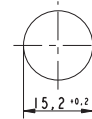


**Pushbutton opaque - mounting hole diameter 15.2 mm, 250 V/0.7 A**



Pict.: Screw terminals, red



Panel cut-out

**Technical Data**

**General information**

Form of lens	protruding lens
Colour of lens	see order block
Form of collar	round

**Dimensions**

Diameter of collar	19 mm
Overall height	8.2 mm
Mounting depth	21.5 mm
Mounting hole	15.2 mm

**Mechanical design**

Mounting	ring nut
Terminals	see order block
Contact system	bridge contact
Contact function	momentary
Contact arrangement	see order block
Contact materials	Ag
Illumination	no
Lamp socket	no

**Mechanical characteristics**

Operating force max.	7.5 N
Operating travel	3 mm
Switching travel NC	1.2 mm
Switching travel NO	2.0 mm
Robustness min.	100 N

**Electrical characteristics**

Rated voltage AC max.	250 V
Rated current max.	0.7 A
Contact resistance when new max.	50 mΩ
Contact resistance acc. to life max.	300 mΩ

**Other specifications**

Operating life (operations)	25,000
Degree of protection from front side	IP40 (IP65 with sealing cap)
Operation temperature min.	-25 °C
Ambient temp. operating max.	+85 °C
Storage temperature min.	-40 °C
Storage temperature max.	+90 °C
Environmental resistance	acc. to IEC 60068-2 -14, -30, -33 and -78
Weight	7 g
Flame class acc. to UL 94	V 0
Hot wire ignition acc. to IEC 60695-2-1	yes

Other Pushb.

**Approvals**

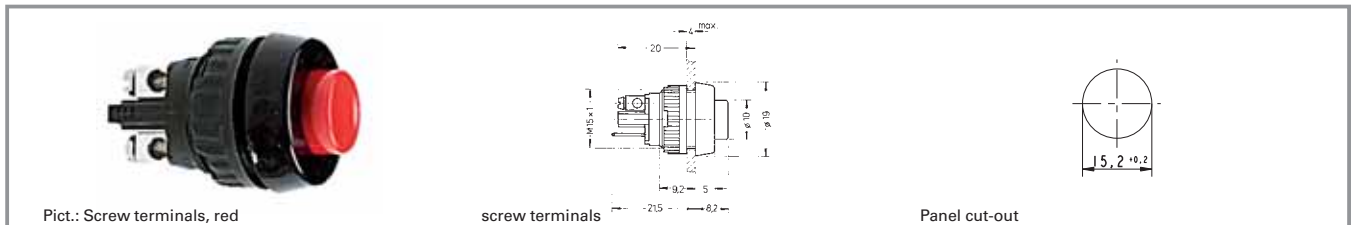


ENEC 25T85

## Typical accessories Pushbutton opaque - mounting hole diameter 15.2 mm, 250V/0.7 A

Description	Photo	Order no.	Additional accessories see page
Sealing cap, transparent (IP65)		<b>5.52.008.115/0000</b>	
Fixing spanner M 15, M 16		5.58.002.019/0105	5 - 21

## Pushbutton opaque - mounting hole diameter 15.2 mm



Contact arrangement	Contact function	Terminals	Colour of lens	Order no.
1 NO	momentary	screw terminals	opaque black	<b>1.10.001.001/0104</b>
1 NO	momentary	screw terminals	opaque white	<b>1.10.001.001/0205</b>
1 NO	momentary	screw terminals	opaque red	<b>1.10.001.001/0301</b>
1 NO	momentary	screw terminals	opaque green	<b>1.10.001.001/0507</b>
1 NO	momentary	solder/quick connector 6.3x0.8 / 2x 2.8x0.8mm	opaque black	<b>1.10.001.011/0104</b>
1 NO	momentary	solder/quick connector 6.3x0.8 / 2x 2.8x0.8mm	opaque white	<b>1.10.001.011/0205</b>
1 NO	momentary	solder/quick connector 6.3x0.8 / 2x 2.8x0.8mm	opaque red	<b>1.10.001.011/0301</b>
1 NO	momentary	solder/quick connector 6.3x0.8 / 2x 2.8x0.8mm	opaque green	<b>1.10.001.011/0507</b>
1 NC	momentary	screw terminals	opaque black	<b>1.10.001.151/0104</b>
1 NC	momentary	screw terminals	opaque red	<b>1.10.001.151/0301</b>
1 NC	momentary	solder/quick connector 6.3x0.8 / 2x 2.8x0.8mm	opaque black	<b>1.10.001.161/0104</b>
1 NC	momentary	solder/quick connector 6.3x0.8 / 2x 2.8x0.8mm	opaque red	<b>1.10.001.161/0301</b>

Technical data see page 1 - 76

Quick-connector 6.3 x 0.8 mm. The connector is splitted and also usable for two connectors 2.8 x 0.8 mm.