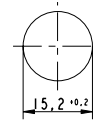


1

Pushbutton, opaque, mounting hole diameter 15.2 mm, 250 V/0.7 A



Pict.: Screw terminals, red

Technical data

General information

Form of lens protruding lens
 Colour of lens see order block
 Form of collar round

Dimensions

Diameter of collar 19 mm
 Overall height 8.2 mm
 Mounting depth 21.5 mm
 Mounting hole 15.2 mm

Mechanical design

Mounting ring nut
 Terminals see order block
 Contact system bridge contact
 Contact function momentary
 Contact arrangement see order block
 Contact materials Ag
 Illuminability no
 Lamp socket no

Mechanical characteristics

Operating force max. 7.5 N
 Operating travel 3 mm
 Switching travel NC 1.2 mm
 Switching travel NO 2.0 mm
 Robustness min. 100 N

Electrical characteristics

Rated voltage AC max. 250 V
 Rated current max. 0.7 A
 Contact resistance when new max. 50 mΩ
 Contact resistance acc. to life max. 300 mΩ

Other specifications

Operating life 25000
 Degree of protection from front side IP40 (IP65 with sealing cap)
 Ambient temp. operating min. -25 °C
 Ambient temp. operating max. +85 °C
 Storage temperature min. -40 °C
 Storage temperature max. +90 °C
 Resistance to constant environment according to IEC 600 68-2-3 and 2-30
 Resistance at variable environment according to IEC 600 68-2-14 and 2-33
 Weight 7 g
 Approvals ENEC T 85/55
 Flame class acc. to UL 94 V 0
 Hot wire ignition acc. to IEC 60695-2-1 yes

Other Pushb.

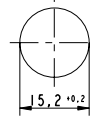
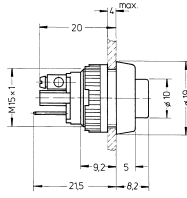
Accessories Pushbutton, opaque, mounting hole diameter 15.2 mm, 250 V/0.7 A

Description	Photo	Order no.	Page
Sealing cap, transparent (IP65)		5.52.008.115/0000	
Fixing spanner M 15, M 16		5.58.002.019/0105	5 - 23

Pushbutton, opaque, mounting hole diameter 15.2 mm



Pict.: Screw terminals, red



Contact arrangement	Contact function	Illuminability	Terminals	Colour of lens	Order no.
1 NO	momentary	no	screw terminals	opaque black	1.10.001.001/0104
1 NO	momentary	no	screw terminals	opaque white	1.10.001.001/0205
1 NO	momentary	no	screw terminals	opaque red	1.10.001.001/0301
1 NO	momentary	no	screw terminals	opaque green	1.10.001.001/0507
1 NO	momentary	no	solder/quick connector 6.3x0.8 / 2x 2.8x0.8mm	opaque black	1.10.001.011/0104
1 NO	momentary	no	solder/quick connector 6.3x0.8 / 2x 2.8x0.8mm	opaque white	1.10.001.011/0205
1 NO	momentary	no	solder/quick connector 6.3x0.8 / 2x 2.8x0.8mm	opaque red	1.10.001.011/0301
1 NO	momentary	no	solder/quick connector 6.3x0.8 / 2x 2.8x0.8mm	opaque green	1.10.001.011/0507
1 NC	momentary	no	screw terminals	opaque black	1.10.001.151/0104
1 NC	momentary	no	screw terminals	opaque red	1.10.001.151/0301
1 NC	momentary	no	solder/quick connector 6.3x0.8 / 2x 2.8x0.8mm	opaque black	1.10.001.161/0104
1 NC	momentary	no	solder/quick connector 6.3x0.8 / 2x 2.8x0.8mm	opaque red	1.10.001.161/0301

Other Pushb.

Technical data see page 1 - 78

Quick-connector 6.3 x 0.8 mm. The connector is splitted and also usable for two connectors 2.8 x 0.8 mm.