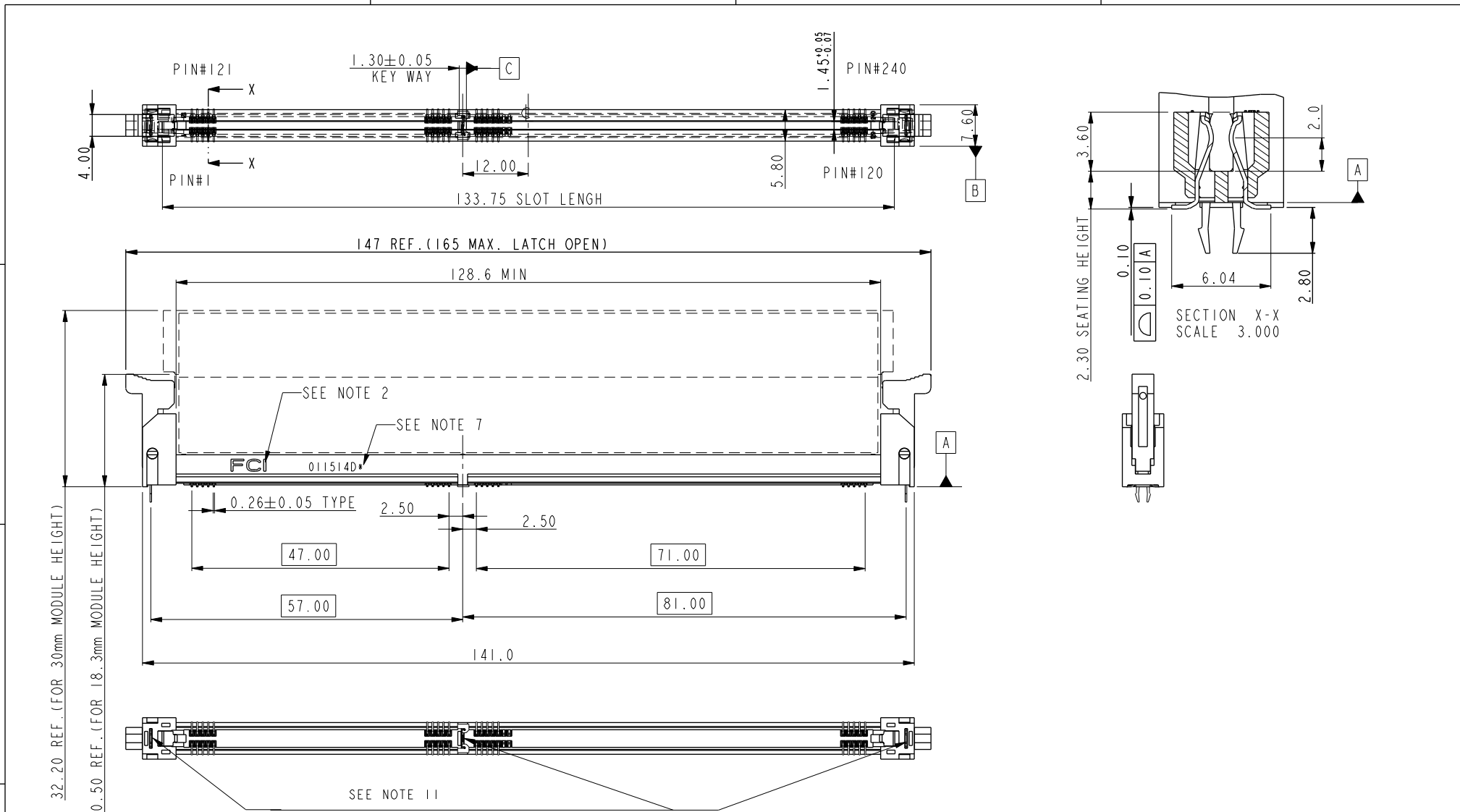


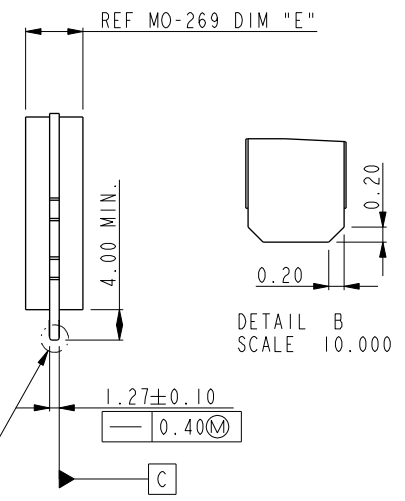
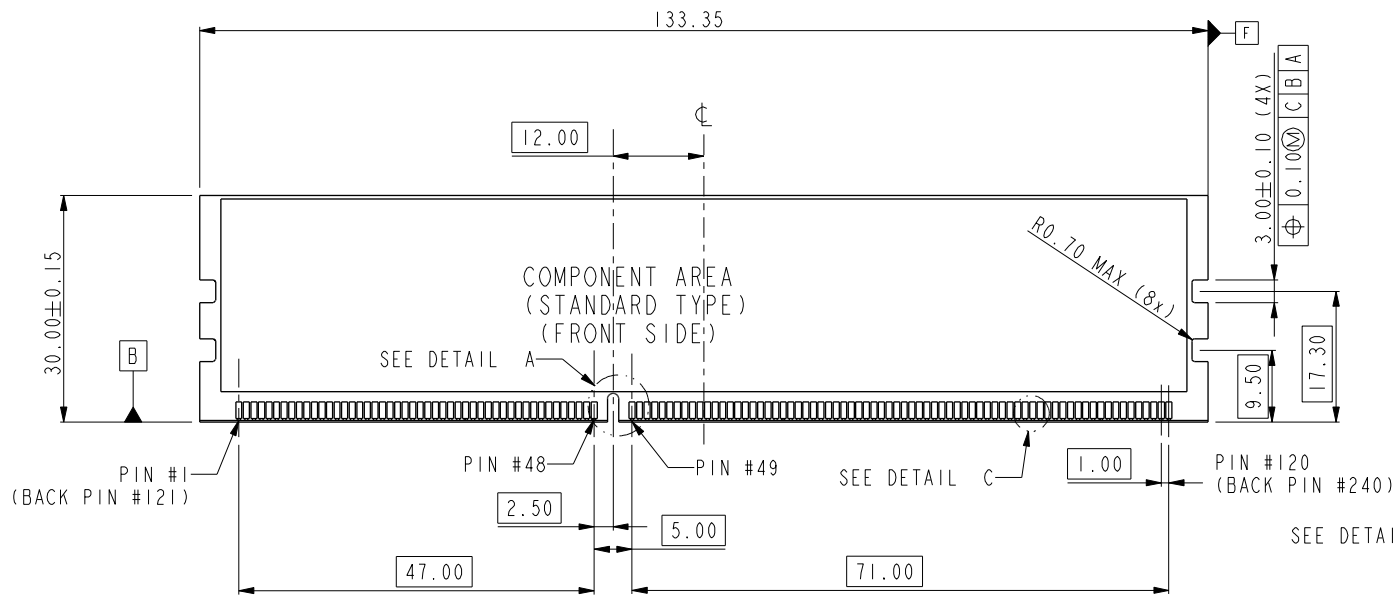


Copyright FCI.

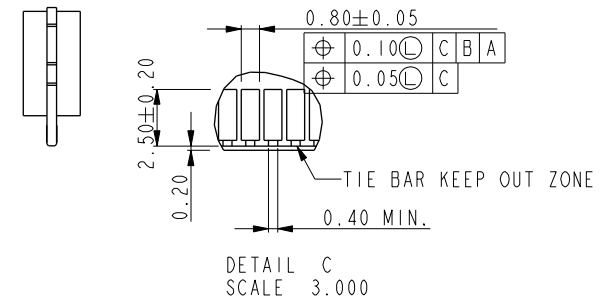
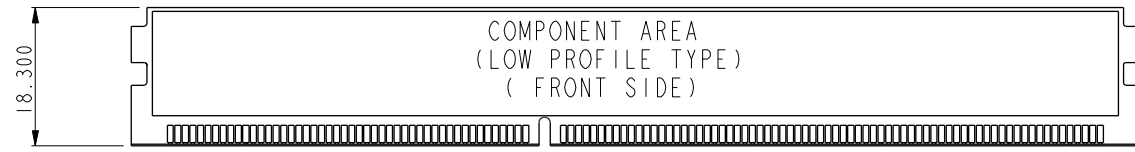


spec ref	*	dr	Terris Liu	2014/01/15	projection	MM	size	A4	scale	1.000								
tolerance std	TOLERANCES UNLESS OTHERWISE SPECIFIED	eng	Terris Liu	2014/01/20			ecn no	-	*									
surface	<table border="1"> <tr> <td>linear</td> <td>0.X</td> <td>± 0.38</td> </tr> <tr> <td></td> <td>0.XX</td> <td>± 0.25</td> </tr> <tr> <td></td> <td>0.XXX</td> <td>± 0.15</td> </tr> <tr> <td>angular</td> <td>0°</td> <td>$\pm 2^\circ$</td> </tr> </table>	linear	0.X	± 0.38				0.XX	± 0.25		0.XXX	± 0.15	angular	0°	$\pm 2^\circ$	chr	-	product family
linear	0.X	± 0.38																
	0.XX	± 0.25																
	0.XXX	± 0.15																
angular	0°	$\pm 2^\circ$																
		appr	Pei-Ming Zheng	2014/01/20			title	DDR3 SMT SOCKET ASS'Y		rev	A							
					www.fci.com	cat. no.	*	Product - Customer Drw	sheet 1 of 4									

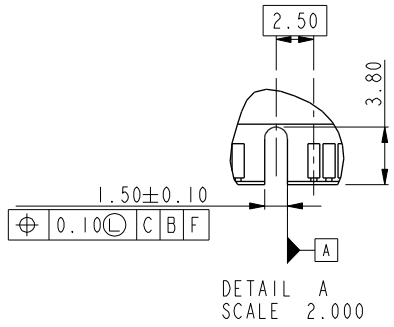
ProjE File - REV C - 2009-06-09



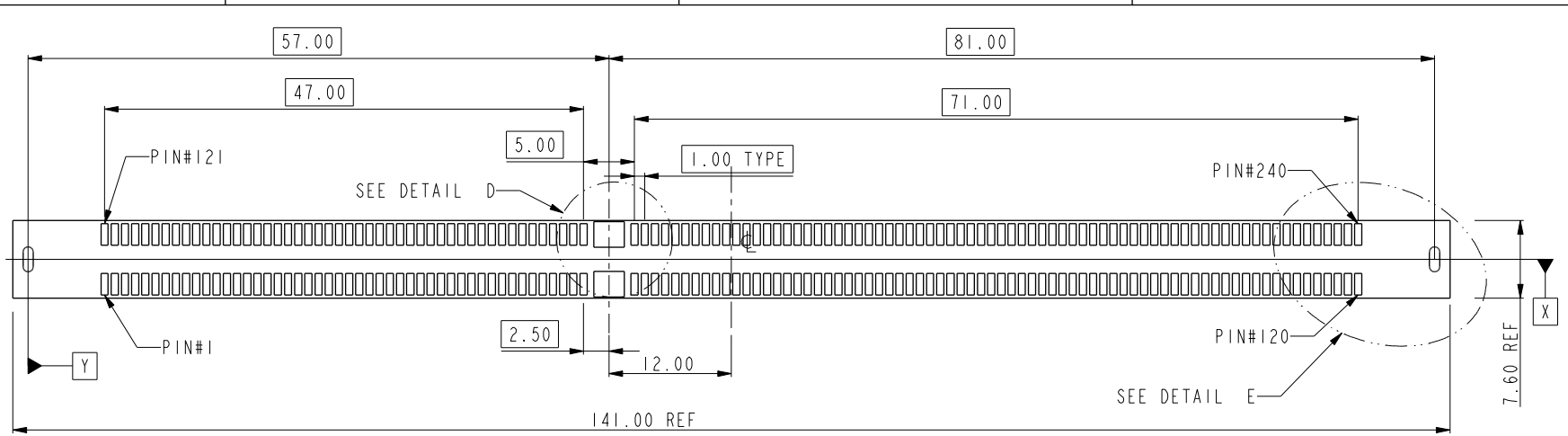
SEE MO-269 FOR DETAIL (VARIATION AX, BX, CX)



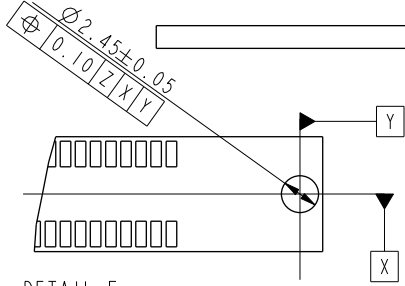
SEE MO-269 FOR DETAIL (VARIATION DX, EX, FX)



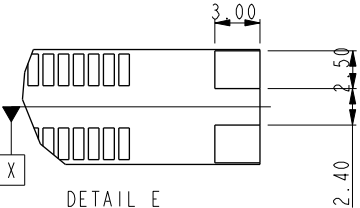
dr Terris Liu	2014/01/15	projection 	MM ←→	size	A4	scale	1.000
eng Terris Liu	2014/01/20			ecn no	-	*	
chr	-	product family		rel leve	Released		
appr Pei-Ming Zheng	2014/01/20	title		10126551	rev		
	www.fci.com	title		DDR3 SMT SOCKET ASS'Y	A		
cat. no.	*	Product - Customer Drw		sheet 2 of 4			



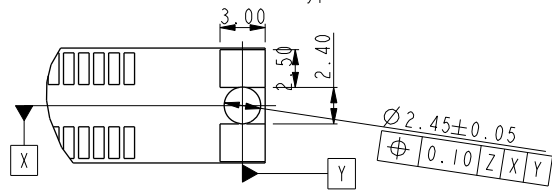
RECOMMEND CIRCUIT BOARD LAYOUT



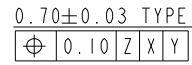
DETAIL E
SCALE 2.000
standard hole for hold-down clips.



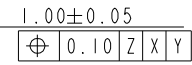
DETAIL E
SCALE 3.000
For smt holddown type.



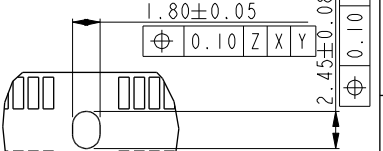
DETAIL E
SCALE 3.000
For 3 smt holddown + 2 plastic post type.



For paste-in-hole applications.
Can be used to solder clips during reflow operation.



DETAIL D
SCALE 3.000
Center forklock type

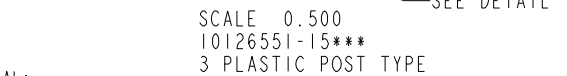
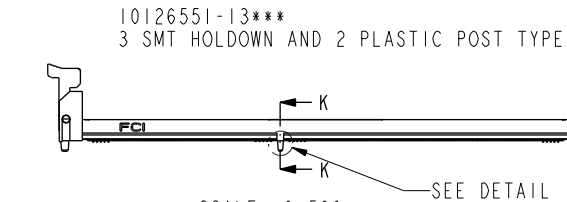
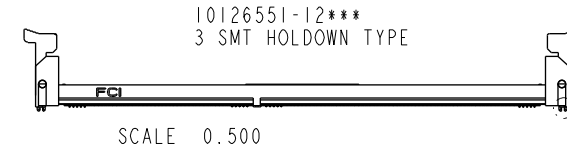
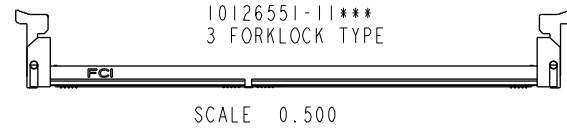
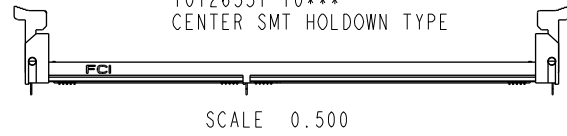
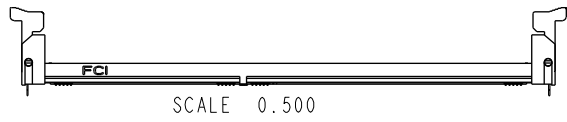


DETAIL D
SCALE 2.000
Center post type
Center smt holddown type

dr Terris Liu	2014/01/15	projection 	MM 	size	A4	scale	1.000	
eng Terris Liu	2014/01/20			ecn no	-	*		
chr -	-			rel leve	Released			
appr Pei-Ming Zheng	2014/01/20	product family			rel leve	Released		
	title	DDR3 SMT SOCKET ASS'Y		dwg no	10126551		rev	A
www.fci.com	cat. no.	*	Product - Customer Drw		sheet 3 of 4			



Copyright FCI.



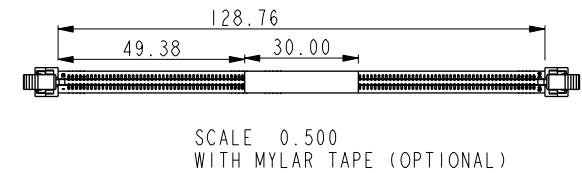
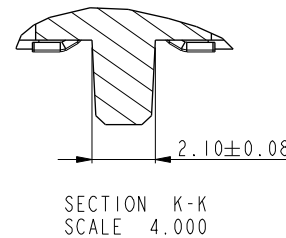
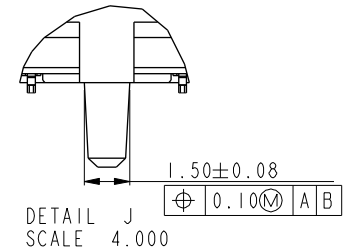
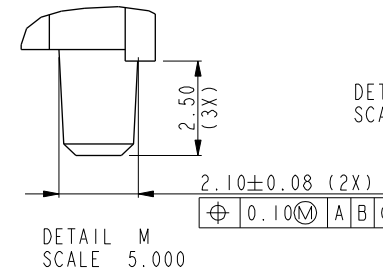
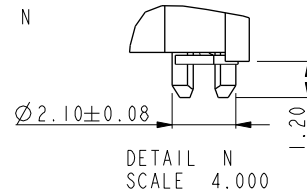
STYLE : MECHANICAL KEYING
1 : 1.5 VOLT. W/ CENTER KEY

HOLD DOWN TYPE
0 : CENTER HOLD DOWN, FORKLOCK AT BOTH END
1 : 3 FORKLOCK TYPE
2 : 3 SMT HOLDOWN TYPE
3 : 3 SMT HOLDOWN AND 2 PLASTIC POST
5 : 3 PLASTIC POST TYPE

PACKAGE AND MYLAR OPTION
1 : HARD TRAY WITH MYLAR
2 : HARD TRAY WITHOUT MYLAR

PLATING				
CODE	CONTACT	SOLDERTAIL	UNDERPLATE	NOTE
3	30u" (0.76um) MIN. GOLD	100u" (2.54um) MIN. 100% MATT TIN	50u" (1.27um) MIN. NICKEL OVERALL	CONTACT NON-LUBRICATED

COLOR OF HOUSING AND EJECTOR
0 : BLACK HOUSING + IVORY EJECTOR
1 : BLACK HOUSING + BLACK EJECTOR
2 : BLACK HOUSING + BLUE(661C) EJECTOR
3 : BLACK HOUSING + YELLOW(123C) EJECTOR



- NOTES:
- MATERIAL:
HOUSING: HIGH PERFORMANCE RESINS, GLASS FILLED UL94V-0 RATED.
EJECTOR: HIGH PERFORMANCE RESINS, GLASS FILLED UL94V-0 RATED.
TERMINAL: HIGH PERFORMANCE COPPER ALLOY
METAL CLIP: COPPER ALLOY.
 - FCI LOGO TO BE APPROXIMATELY LOCATED AS SHOWN ON PRINT.
 - PRODUCT SPECIFICATION: .
 - PACKAGING SPECIFICATION: GS-14-899.
 - RECOMMENDED STENCIL THICKNESS NO LESS THAN 0.15 mm.
 - FOR OPTIMUM PERFORMANCE, THE TIE BAR IS TO BE ON AN INTERNAL LAYER SO THAT THE REMNANT CANNOT CAUSE CONTACT DAMAGE.
 - THE DATE CODE IS SHOWN "MMDDYY*.". "*" MEANS PRODUCTION LINE.
 - THIS PRODUCT MEETS EUROPEAN UNION DIRECTIVES AND OTHER COUNTRY REGULATIONS AS DESCRIBED IN GS-22-008.
 - THE HOUSING WILL WITH STAND EXPOSURE TO 260°C PEAK TEMPERATURE FOR 10 SECONDS IN AN IR REFLOW SOLDERING APPLICATION.
 - THE HOLDOWN TYPES ARE OPTION FOR FORKLOCK OR SMT HOLDOWN.

dr	Terris Liu	2014/01/15	projection 	MM ←→	size	A4	scale	1.000
eng	Terris Liu	2014/01/20			ecn no	-	*	
chr	-	-			rel leve	Released		
appr	Pei-Ming Zheng	2014/01/20	product family					
	title	DDR3 SMT SOCKET ASS'Y		dwg no	10126551		rev	A
www.fci.com	cat. no.	*	Product - Customer Drw		sheet 4 of 4			



Copyright FCI.

Mouser Electronics

Authorized Distributor

Click to View Pricing, Inventory, Delivery & Lifecycle Information:

[FCI / Amphenol:](#)

[10126551-13113LF](#)