

## Type 12 Mild Steel Pushbutton Enclosures *1489 Series* Hinged Cover



### Application

- Designed to accept standard heavy duty oil tight pushbuttons, switches and pilot lights.
- Provides protection from dirt, dust, oil and water.

### Standards

- UL 508 Type 12
- CSA Type 12
- JIC standard EGP-1-1967, EMP-1-1967
- **Complies with**
  - NEMA Type 12
  - IEC 60529, IP54
- Appropriate components are required to maintain these standards.

### Construction

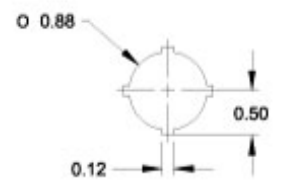
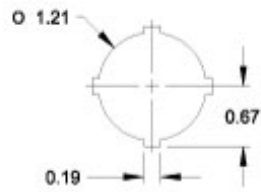
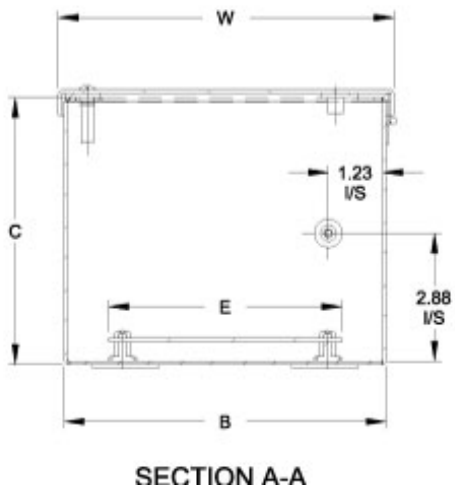
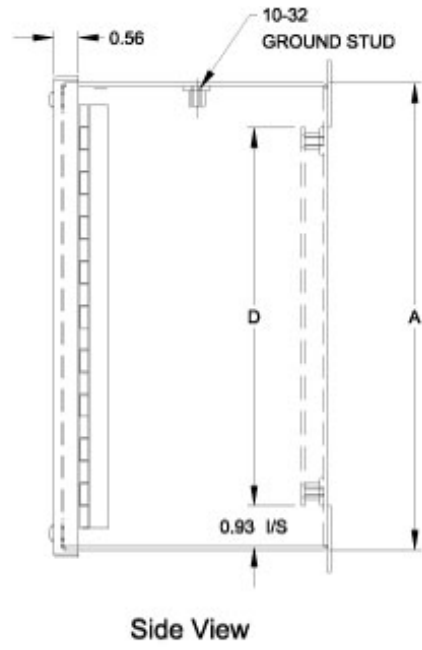
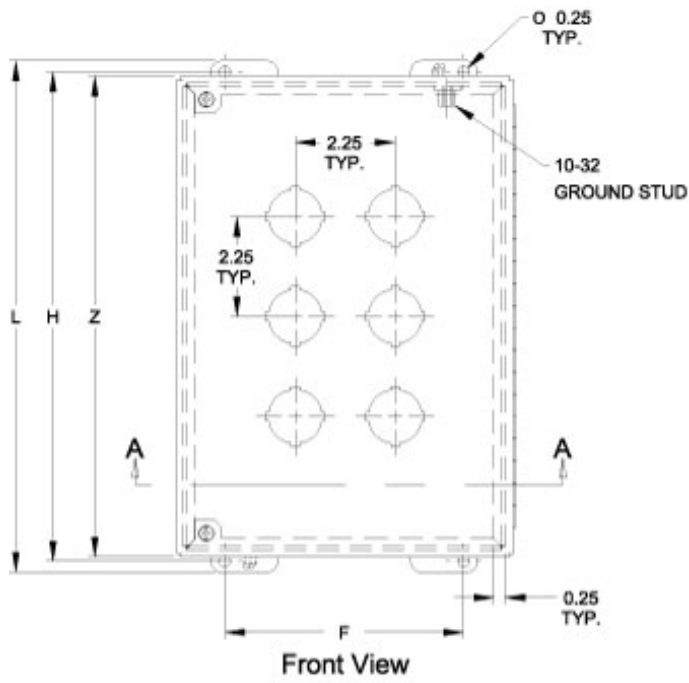
- Formed 14 gauge steel.
- Smooth continuously welded seams.
- Welded brackets provide for enclosure mounting.
- Continuously hinged cover is secured with captive, plated steel screws which fasten into threaded sealed wells.
- Oil resistant gasket and adhesive.
- Weldnuts are provided for mounting inner panels.
- A removable 14 gauge inner panel is included.
- A bonding stud is provided on the door and a grounding stud is provided in the enclosure.

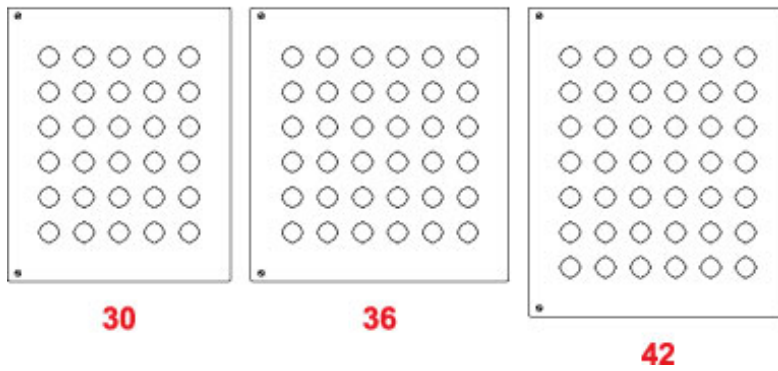
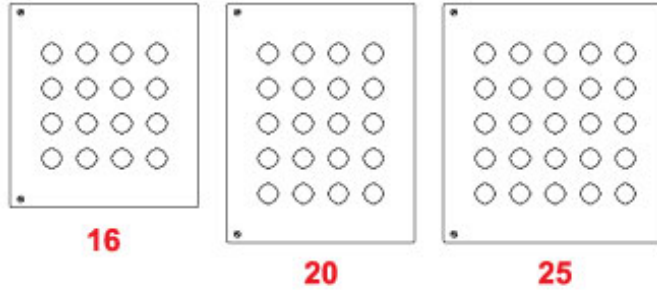
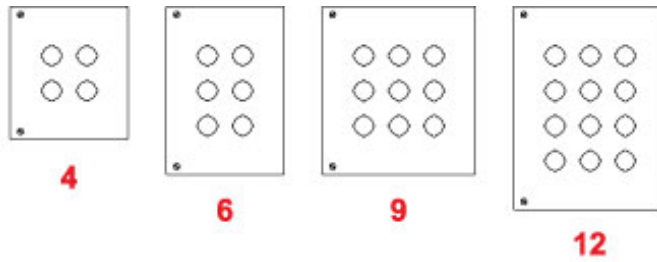
### Finish

- Cover and enclosure are phosphatized and finished in ANSI 61 gray powder coating.
- Removable inner panel is finished in white powder coating.

### Accessories

- Hole Plugs
- Ground Wire Kits
- Pedestal and Base





Part No.		No. Of Holes	Panel Size								Overall Dimensions			Ship Wt. Lbs.
30.5mm Hole	22.5mm Hole		A	B	C	D	E	F	H	L	W	Z		
<b>1489P4</b>	<b>1489MP4</b>	4	8.25	7.25	6.00	6.25	5.25	5.38	8.75	9.25	7.56	8.56	9	
<b>1489P6</b>	<b>1489MP6</b>	6	10.50	7.25	6.00	8.50	5.25	5.38	11.00	11.50	7.56	10.81	11	
<b>1489P9</b>	<b>1489MP9</b>	9	10.50	9.50	6.00	8.50	7.50	7.63	11.00	11.50	9.81	10.81	13	
<b>1489P12</b>	<b>1489MP12</b>	12	12.75	9.50	6.00	10.75	7.50	7.63	13.25	13.75	9.81	13.06	15	
<b>1489P16</b>	<b>1489MP16</b>	16	12.75	11.75	6.00	10.75	9.75	9.88	13.25	13.75	12.06	13.06	19	
<b>1489P20</b>	<b>1489MP20</b>	20	15.00	11.75	6.00	13.00	9.75	9.88	15.50	16.00	12.06	15.31	21	
<b>1489P25</b>	<b>1489MP25</b>	25	15.00	14.00	6.00	13.00	12.00	12.13	15.50	16.00	14.31	15.31	23	
<b>1489P30</b>	<b>1489MP30</b>	30	17.25	14.00	6.00	15.25	12.00	12.13	17.75	18.25	14.31	17.56	28	
<b>1489P36</b>	<b>1489MP36</b>	36	17.25	16.25	6.00	15.25	14.25	14.38	17.75	18.25	16.56	17.56	32	
<b>1489P42</b>	<b>1489MP42</b>	42	19.50	16.25	6.00	17.50	14.25	14.38	20.00	20.50	16.56	19.81	29	

*Data subject to change without notice*

# Mouser Electronics

Authorized Distributor

Click to View Pricing, Inventory, Delivery & Lifecycle Information:

## Hammond:

[1489P25](#) [1489P20](#) [1489P12](#) [1489P16](#) [1489P36](#) [1489P30](#) [1489P6](#) [1489P9](#) [1489P4](#) [1489P42](#) [1489MP12](#)  
[1489MP16](#) [1489MP20](#) [1489MP25](#) [1489MP30](#) [1489MP36](#) [1489MP4](#) [1489MP42](#) [1489MP6](#) [1489MP9](#)