

### INTRODUCTION:

Adam Tech BHR Series .100" Box Headers are a dual row shrouded header for use with dual row IDC female socket connectors. Our low profile, space saving design has a center slot for the socket's polarization bump. Adam Tech's Box Headers are available in Straight PCB Mount, Right Angle PCB Mount and SMT Mounting. Plating options include choice of Gold, Tin or Selective Gold. SMT versions are manufactured with a Hi-Temp insulator. Additional options include latches and custom pin lengths.

### FEATURES:

- Superior low profile design
- Slot for IDC socket Polarization bump
- Straight PCB, Right Angle PCB and SMT versions
- Gold, Tin or Selective Gold plating
- Options include Elevated types and integral latches
- Hi-Temp insulator available

### MATING SOCKETS:

Adam Tech .100" X .100" dual row IDC sockets

### SPECIFICATIONS:

#### Material:

Insulator: PBT, glass reinforced, rated UL94V-0  
Optional Hi-Temp insulator: Nylon 6T, rated UL94V-0  
Insulator Color: Black (Gray optional)  
Contacts: Brass

#### Plating:

U = Gold over nickel underplate  
SG = Gold over nickel underplate on contact area, tin over copper underplate on tails.  
T = Tin over copper underplate overall

#### Electrical:

Operating voltage: 250V AC max.  
Current rating: 1 Amp max  
Contact resistance: 20 mΩ max. initial  
Insulation resistance: 5000 MΩ min.  
Dielectric withstanding voltage: 1000V AC for 1 minute

#### Mechanical:

Mating durability: 500 cycles min.

#### Temperature Rating:

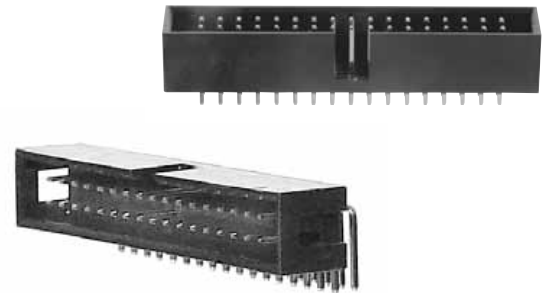
Operating temperature: -40°C to +105°C

#### PACKAGING:

Anti-ESD plastic trays

#### SAFETY AGENCY APPROVALS:

UL Recognized & CSA Certified, File no. E224053



### ORDERING INFORMATION

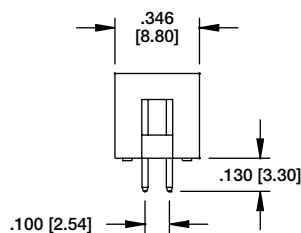
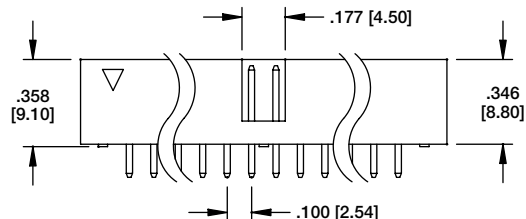
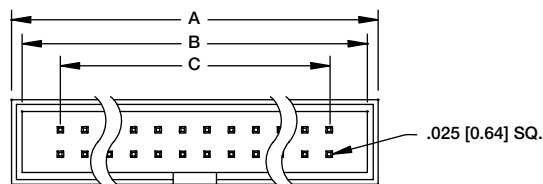
BHR	50	V	U	A
<b>SERIES INDICATOR</b> BHR = .100" Box Header	<b>NO. OF POSITIONS</b> 08, 10, 14, 16, 20, 24, 26, 30, 34, 40, 44, 50, 60, 64	<b>MOUNTING ORIENTATION</b> V = Straight Mount H = Right Angle Mount	<b>CONTACT PLATING</b> U = Gold Plated T = Tin Plated SG = Gold Plating in contact area, tin plated tails	<b>PIN LENGTH</b> A = Standard solder tail B = Special length, customer specified SMT = Surface Mount

### OPTIONS:

Add designator(s) to end of part number

LL = Box header with long plastic latches  
SL = Box header with short plastic latches  
ML = Box header with long metal latches  
MS = Box header with long metal latches  
30 = 30 μin gold plating in contact area  
GY = Gray color insulator

HT = Hi-Temp insulator for Hi-Temp soldering processes up to 260°C (Add this option for thru-hole products only.)  
All SMT products are manufactured with Hi-Temp insulators)



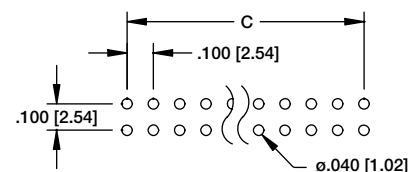
A = .100 [2.54] X No. of Positions / 2 + .300 [7.62]  
 B = .100 [2.54] X No. of Positions / 2 + .200 [5.08]  
 C = .100 [2.54] X No. of Spaces

**BHR**

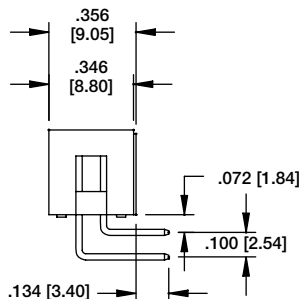
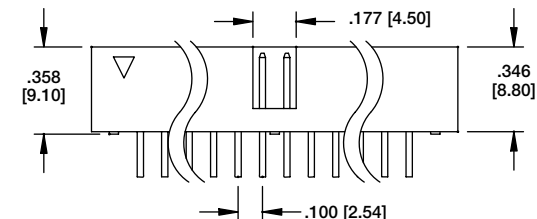
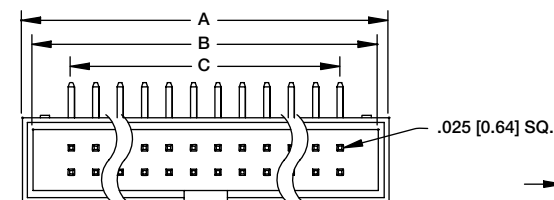
**STRAIGHT PCB MOUNT**



**BHR-34-VUA**



**Recommended PCB Layout**



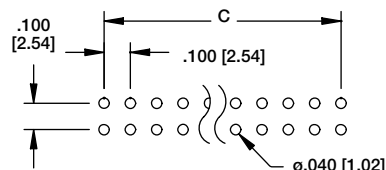
A = .100 [2.54] X No. of Positions / 2 + .300 [7.62]  
 B = .100 [2.54] X No. of Positions / 2 + .200 [5.08]  
 C = .100 [2.54] X No. of Spaces

**BHR**

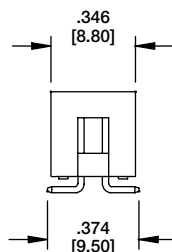
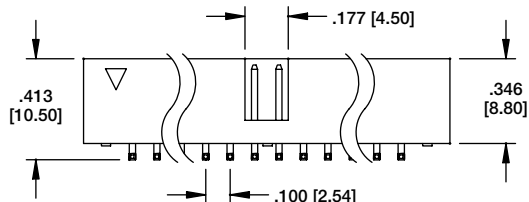
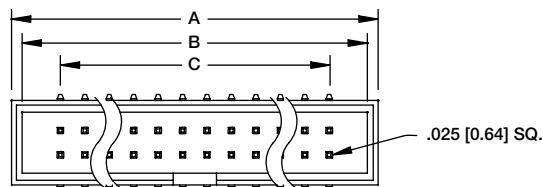
**RIGHT ANGLE PCB MOUNT**



**BHR-34-HUA**



**Recommended PCB Layout**

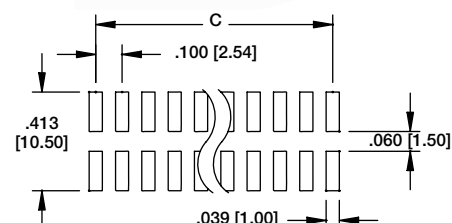


A = .100 [2.54] X No. of Positions / 2 + .300 [7.62]  
 B = .100 [2.54] X No. of Positions / 2 + .200 [5.08]  
 C = .100 [2.54] X No. of Spaces

**BHR**  
**SURFACE MOUNT**



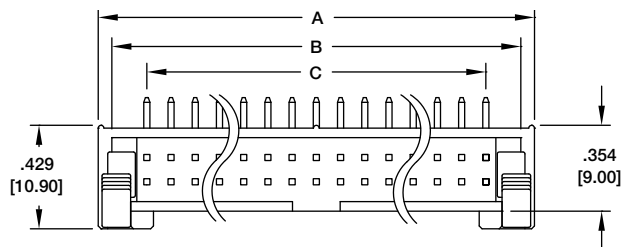
**BHR-30-VSG-SMT**



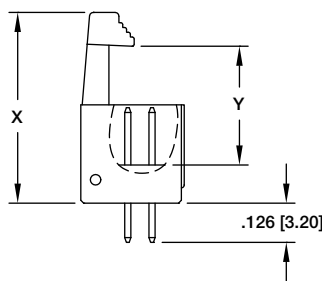
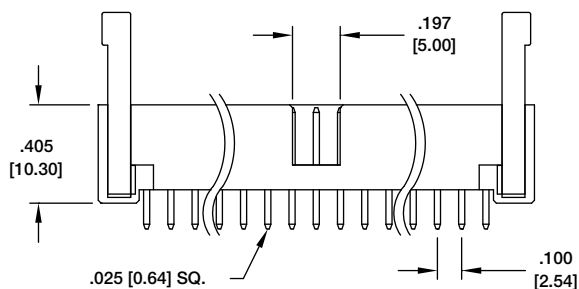
**Recommended PCB Layout**

### BHR

#### STRAIGHT MOUNT BOX HEADER WITH LATCHES



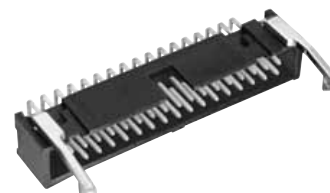
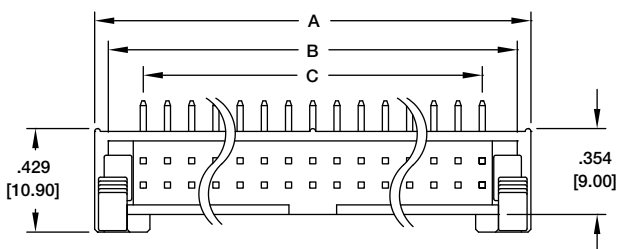
BHR-34-VUA-ML



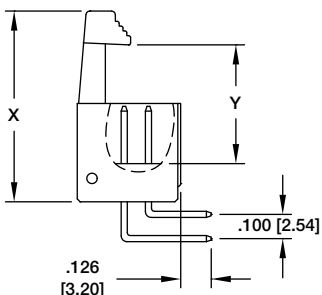
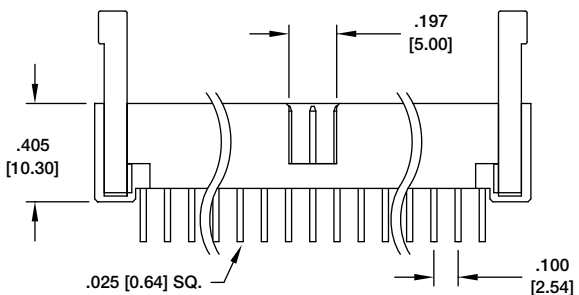
$$\begin{aligned} &= .100 [2.54] \times \text{No. of Positions} / 2 + .301 [7.66] \\ &= .100 [2.54] \times \text{No. of Positions} / 2 + .189 [4.80] \\ &= .100 [2.54] \times \text{No. of Positions} / 2 - 1 \end{aligned}$$

### BHR

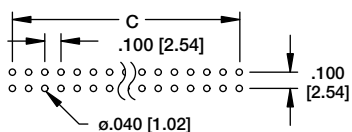
#### RIGHT ANGLE MOUNT BOX HEADER WITH LATCHES



BHR-34-HUA-ML



$$\begin{aligned} A &= .100 [2.54] \times \text{No. of Positions} / 2 + .301 [7.66] \\ B &= .100 [2.54] \times \text{No. of Positions} / 2 + .189 [4.80] \\ C &= .100 [2.54] \times \text{No. of Positions} / 2 - 1 \end{aligned}$$



Recommended PCB Layout

LATCH TYPE	DIMENSIONS	
	X	Y
LONG LATCH (-LL)	1.035 [26.30]	.575 [14.60]
SHORT LATCH (-SL)	.901 [22.90]	.417 [10.60]