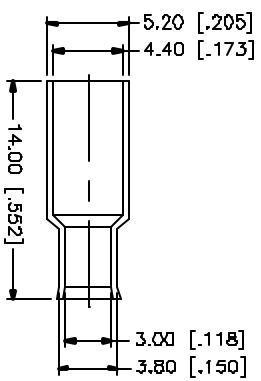
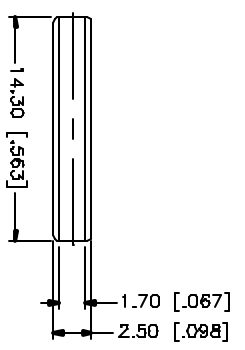
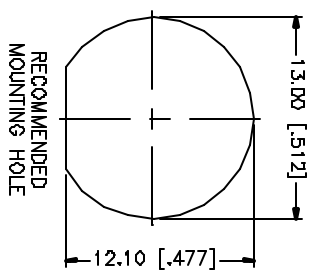
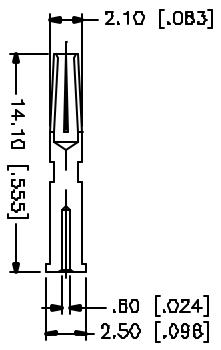
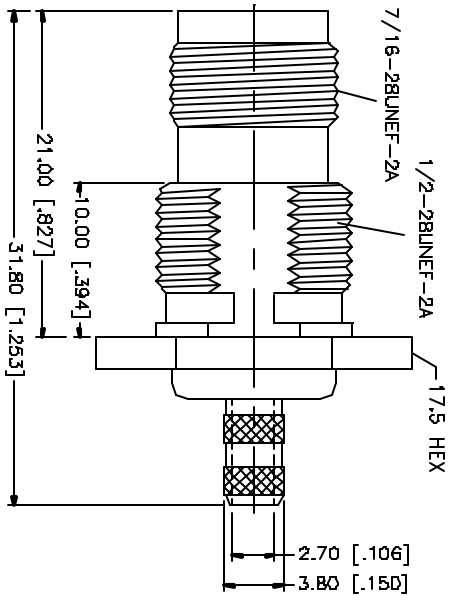
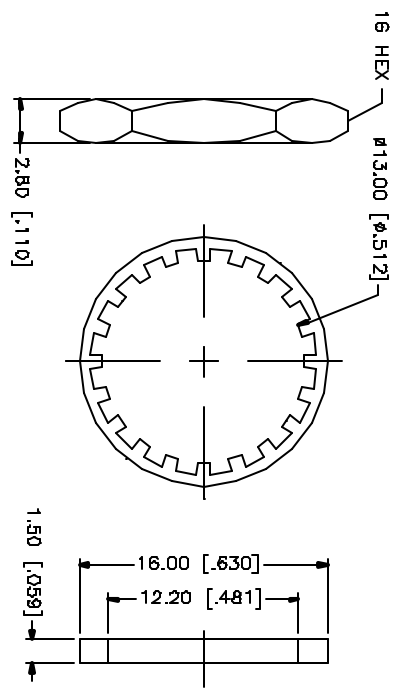
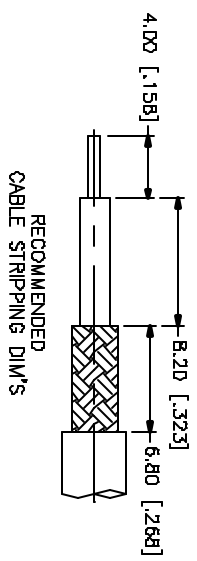


REV.	DATE	DESCRIPTION
A	05/01/04	UPDATE DRAWING FORMAT



QTY	FINISH	MATERIAL	DESCRIPTION
1	NICKEL	COPPER	FERRULE
1	NATURAL	DELFIN	SLEEVE
1	GOLD	PHOS. BRONZE	CONTACT PIN
1	NICKEL	BRASS	HEX NUT
1	NICKEL	BRASS	LOCK WASHER
1	RED	RUBBER	GASKET
1	NATURAL	TEFLON	INSULATOR
1	NICKEL	BRASS	BODY

APPROVALS	DATE
G.R.S.	05/01/04

DO NOT SCALE DRAWING
<p>UNLESS OTHERWISE SPECIFIED DIMENSIONS ARE IN INCHES AND FOR OTHERWISE REFER TO THE TOLERANCES FOR DIMENSIONS ARE:</p> <p>UNLESS OTHERWISE SPECIFIED TOLERANCES FOR HULLS AND PINS ARE:</p> <p>0.05 - 0.01mm ± 0.20mm 0.5 - 3.0mm ± 0.40mm 3.0 - 12.0mm ± 0.50mm</p> <p>UNLESS OTHERWISE SPECIFIED TOLERANCES FOR HOLES ARE:</p> <p>0.020 - 0.315 = ± 0.007" 0.315 - 1.180 = ± 0.015" 1.180 - 4.724 = ± 0.020"</p>

CAD FILE	DWG. NO.	REV.	SIZE	SCALE
C:/122/122428.DWG	122428.DWG	A	A	NA

Amphenol Connex

TNC BULKHEAD CRIMP JACK
(FOR RG-174/U, 188A/U, 316/U)

122428