

Flanged Lid Version - ABS (1591 Series)

Plastic



Molded in Flame Retardant ABS

Brass bushings for repetitive assembly and disassembly...

P.C. board standoffs molded into lid...

Lap joint construction...

Enclosure uses machine screws into brass bushings...

OTHER KEY FEATURES

- Electronic instrument enclosures, designed for mounting printed circuit boards.
- Designed for applications where the enclosure needs to be easily wall or shelf mounted.
- Perfect where extra enclosure security is required by restricting access to lid screws.
- Integral card guides accept 1.5 mm (0.062") P.C. cards.
- Lap joint construction provides protection against access of dust and splashing water.
- Designed to meet IP54
- Molded in flame retardant ABS plastic (material carries a UL flammability rating of 94V-0).
- Lid is secured with M3 x 10 mm Philips machine screws, threaded into integral brass bushings. The black enclosure comes with black screws. The grey are nickel plated.

ACCESSORIES



P.C. Board Card Adaptors

Allows horizontal mounting of P.C. board(s). See "Accessories Section" for full details!

- 1591Z6** - Package of 6
- 1591Z50** - Package of 50
- 1591Z100** - Package of 100



Replacement Screws

Machine screws, nickel plated, M3 - 0.5 x 10mm

1591MS100 - Package of 100

Machine screws, black, M3 - 0.5 x 10mm

1591MS100BK - Package of 100



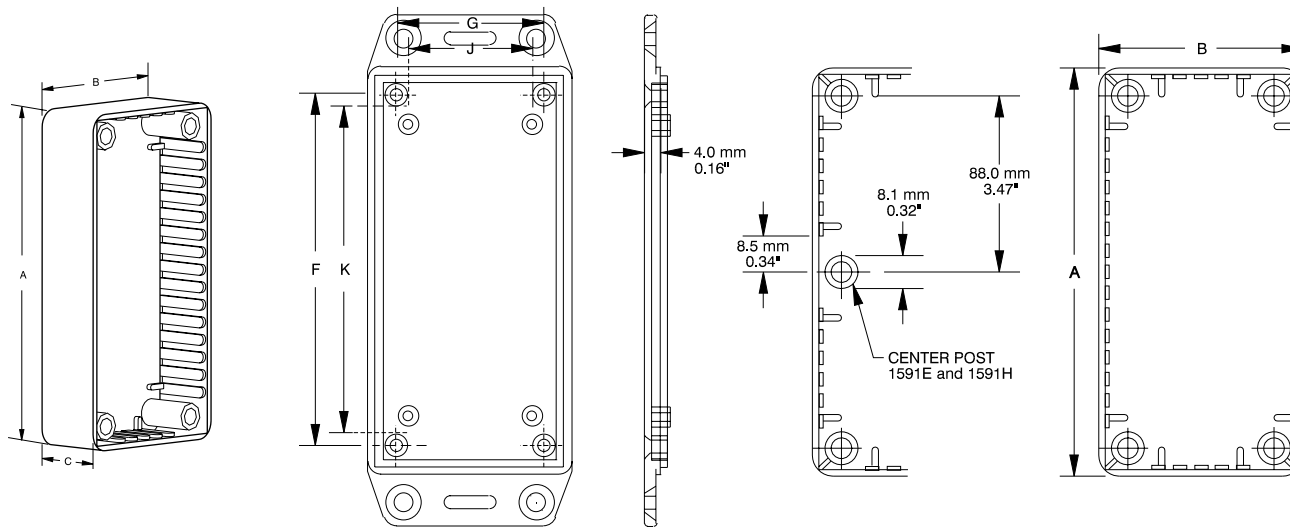
P.C. Board Screws

Self-tapping type, used for bosses in the 1591 lid for P.C. board installation. #4 x 1/4" (6.4 mm)

- 1593ATS50** - Package of 50
- 1593ATS100** - Package of 100

Flanged Lid Version - ABS (1591 Series)

Plastic



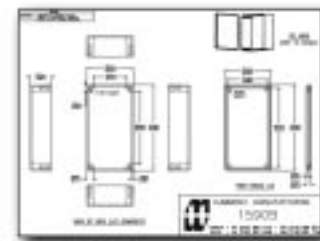
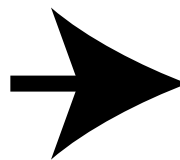
Lid (Inside & Edge View)

Top View

Part Number		Units	Dimensions					P.C. Card Clearance	
Black	Grey		A	B	C (No Lid)	F	G	J	K
1591MFLBK	1591MFLGY	inch	3.3	2.2	0.8	2.8	1.7	1.3	2.5
		mm	85	56	21	71	42	34	63
1591LFLBK	1591LFLGY	inch	3.3	2.2	1.4	2.9	1.7	1.4	2.5
		mm	85	56	35	73	44	35	64
1591AFLBK	1591AFLGY	inch	3.9	2.0	0.8	3.4	1.4	1.1	3.1
		mm	100	50	21	86	36	29	79
1591SFLBK	1591SFLGY	inch	4.3	3.2	1.6	3.8	2.7	2.4	3.5
		mm	110	82	40	98	70	61	89
1591BFLBK	1591BFLGY	inch	4.4	2.4	1.1	3.9	1.9	1.6	3.5
		mm	112	62	27	98	48	41	91
1591CFLBK	1591CFLGY	inch	4.7	2.6	1.4	4.2	2.0	1.7	3.9
		mm	120	65	36	106	51	44	99
1591TFLBK	1591TFLGY	inch	4.7	3.2	2.2	4.2	2.6	2.3	3.9
		mm	120	80	55	106	66	59	99
1591UFLBK	1591UFLGY	inch	4.7	4.7	2.2	4.2	4.2	3.9	3.9
		mm	120	120	55	106	106	99	99
1591VFLBK	1591VFLGY	inch	4.7	4.7	3.5	4.2	4.2	3.9	3.9
		mm	120	120	90	106	106	99	99
1591GFLBK	1591GFLGY	inch	4.8	3.7	1.2	4.2	3.1	2.8	3.9
		mm	121	94	30	106	79	73	100
1591DFLBK	1591DFLGY	inch	5.9	3.2	1.8	5.4	2.6	2.3	5.0
		mm	150	80	46	136	66	59	129
1591HFLBK	1591HFLGY	inch	6.5	2.8	1.0	6.0	2.2	1.9	5.6
		mm	165	71	25	153	56	50	144
1591EFLBK	1591EFLGY	inch	7.5	4.3	2.2	6.9	3.8	3.5	6.6
		mm	191	110	57	176	96	89	170

NOTES: - Assembled height = dimension "C" + 0.16" (4.0 mm)
 - Average wall thickness: 0.06" (1.5 mm)

For detailed drawings, CAD files and color photos visit our website at: www.hammondmg.com



CANADA
 Guelph, Ontario (519) 822-2960
 St. Laurent, Quebec (514) 343-9010
USA
 Cheektowaga, NY (716) 651-0086

www.hammondmg.com

EUROPE
 Basingstoke, UK +44 1256 812812

AUSTRALASIA
 Queenstown, SA, Australia +61 8 8240 2244