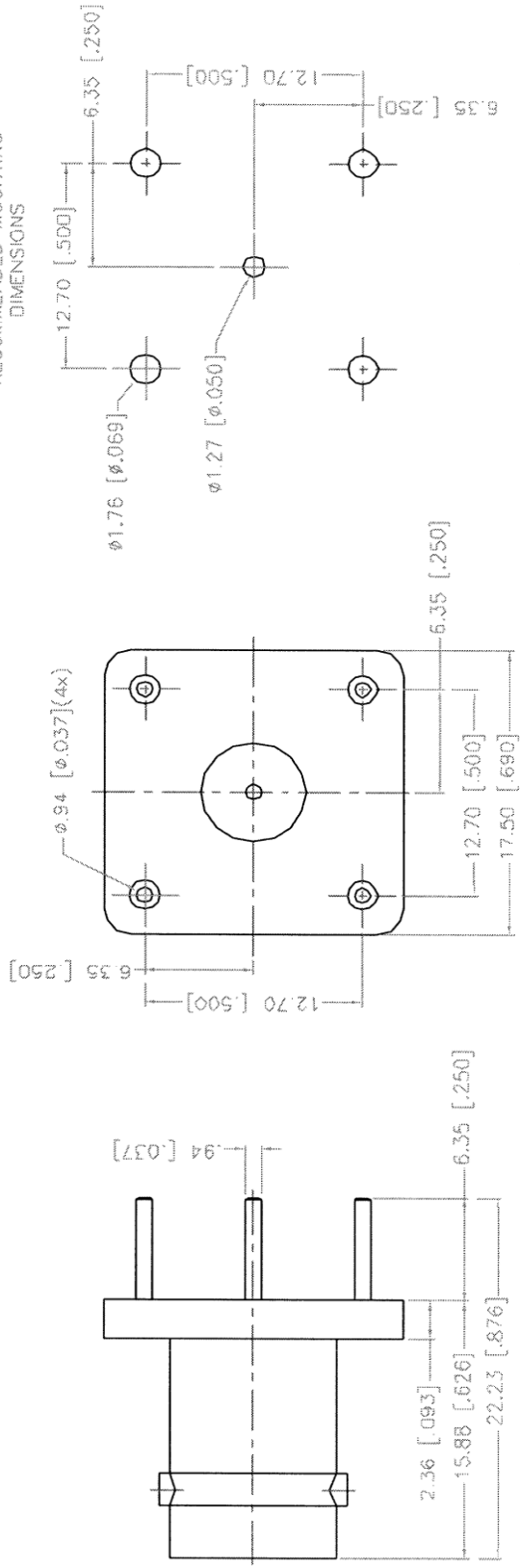


REV.	DATE	DESCRIPTION
A	06/13/97	CHANGE PIN LOCATIONS TO 12.7 SQ.
B	11/11/97	REDIMENSION/ ADD 50 ohms TO DESCRIPTION
C	11/20/98	ADD MOUNTING DIMENSIONS



DESCRIPTION	MATERIAL	FINISH	UNLESS OTHERWISE SPECIFIED DIMENSIONS ARE IN MILLIMETERS DIMENSIONS IN [ ] ARE IN INCHES FOR CUSTOMER REFERENCE ONLY	APPROVALS	DATE
1 BODY	BRASS	NICKEL	<small>UNLESS OTHERWISE SPECIFIED TOLERANCES FOR MILLIMETERS ARE:            0.5-6 = ± 0.2            6-30 = ± 0.4            30-120 = ± 0.6            120-315 = ± 1            315-1000 = ± 1.6            1000-2000 = ± 2.4</small>	DRAWN G.R.S.	11/20/98
2 INSULATOR	TEFLON	NATURAL		CHECKED	
3 CONTACT PIN	PHOS. BRONZE	GOLD		ISSUED	
4					
5					
6					
7					
8					



TITLE		BNC P.C. MOUNT RECEPTACLE JACK - 50 ohms
SIZE	FSCM NO.	DWG. NO.
A	99001	112536.DWG
SCALE	PART NO.	SHEET
NA	112536	1 OF 1

# Mouser Electronics

Authorized Distributor

Click to View Pricing, Inventory, Delivery & Lifecycle Information:

[Amphenol:](#)

[112536](#)