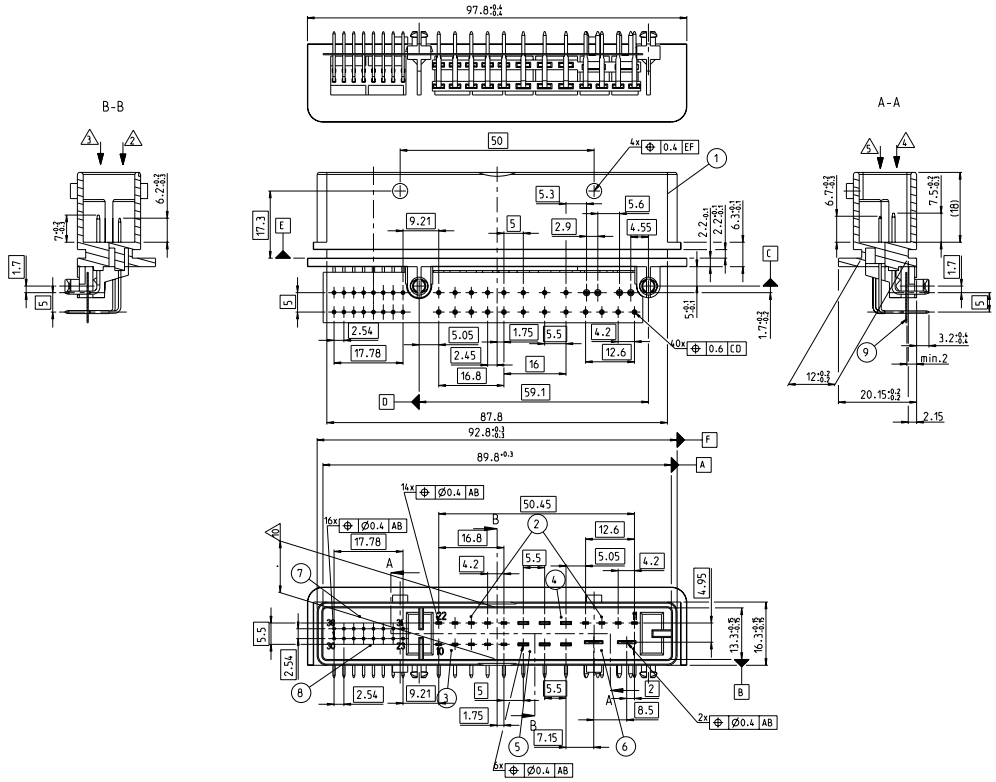
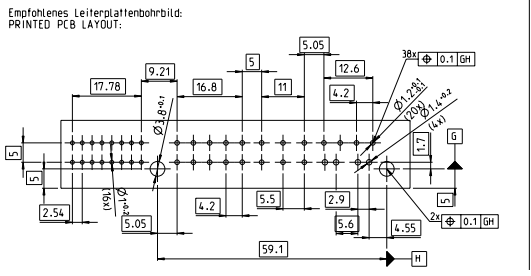
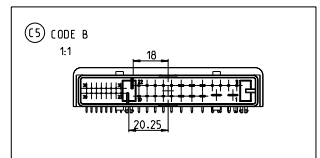


REV.	DATE	DESCRIPTION	BY	CHK
1	2007/07/10	New drawing	RD	BL
2	2007/07/10	Correction of the rev.	RD	BL
3	2007/07/10	Add new version code B	GR	SG
4	2007/07/10	Change the color of housing code B to white	GR	SG



Bemerkungen
NOTES

- Passender Buchsenstecker: 38pol. DPAW ING-NO.: 1534580
SUITABLE RECEPTACLE HOUSING: 38POS.
- Haltekraft der Flachkontakte 1.5 (Pos. 2.3) bei axialer Beanspruchung
RESISTANT FORCE OF THE TAB 1.5 (POS. 2.3) AGAINST AXIAL CONDITIONING min. 55N
- Haltekraft der Flachkontakte 2.8 (Pos. 4.5) bei axialer Beanspruchung
RESISTANT FORCE OF THE TAB 2.8 (POS. 4.5) AGAINST AXIAL CONDITIONING min. 80N
- Haltekraft der Flachkontakte 4.8 (Pos. 6) bei axialer Beanspruchung
RESISTANT FORCE OF THE TAB 4.8 (POS. 6) AGAINST AXIAL CONDITIONING min. 120N
- Haltekraft der Stiftkontakte 0.63 (Pos. 7.8) bei axialer Beanspruchung
RESISTANT FORCE OF THE PINS 0.63 (POS. 7.8) AGAINST AXIAL CONDITIONING min. 40N
- Verpackung: Lagenweise im Karton
PACKAGING: INTERPLAYER PACKAGING IN CORRUGATED BOX
- Stecklehre fuer Steckseite: Nr.
MATING GAUGE FOR MATING SIDE: NO.
- Positionstoleranzen gelten fuer die Flachsteckerstippen
POSITION TOLERANCES APPLY TO THE TAB-POINTS
- Loelbarkeit nach IEC 68, T2-20
SOLDERABILITY PER IEC 68, T2-20
- Formbedingter Verzug +0.2 zul.
-0.6 zul.
WAREPAGE +0.2 PERMITTED
-0.6



ASSY. NO. Bestell-Nr.	REV.	COD.	REV.	DESCRIPTION Beschreibung	COLOR SURFACE Farbe Oberflaeche	QTY.	ITEM NO.
1534531-2	A	B	A	CENTERPLATE	WHITE	1	9
			A	MODU PIN C0.63	TIN PLATED	8	8
			A	MODU PIN C0.63	TIN PLATED	8	7
			A	TAB 4.8X0.8	TIN PLATED	2	6
			A	TAB 2.8X0.8	TIN PLATED	3	5
			A	TAB 2.8X0.8	TIN PLATED	3	4
			A	TAB 1.5X0.6	TIN PLATED	5	3
			A	TAB 1.5X0.6	TIN PLATED	9	2
			A	PIN HEADER	WHITE	1	1
			A	MODU PIN C0.63	TIN PLATED	8	8
1534531-1	C	A	A	CENTERPLATE	WHITE	1	9
			A	MODU PIN C0.63	TIN PLATED	8	7
			A	TAB 4.8X0.8	TIN PLATED	2	6
			A	TAB 2.8X0.8	TIN PLATED	3	5
			A	TAB 2.8X0.8	TIN PLATED	3	4
			A	TAB 1.5X0.6	TIN PLATED	5	3
			A	TAB 1.5X0.6	TIN PLATED	9	2
C	PIN HEADER	BLACK	1	1			



THIS DRAWING IS A CONTROLLED DOCUMENT.

DATE: 2007/07/10
 DRAWING NO.: 1534531-1
 PROJECT: 1534531

TE Connectivity
 TAB HEADER ASSY, 38 POSN.
 Flachsteckerleiste, 2SB, 38pol.

STATE: CA
 CUSTOMER DRAWING