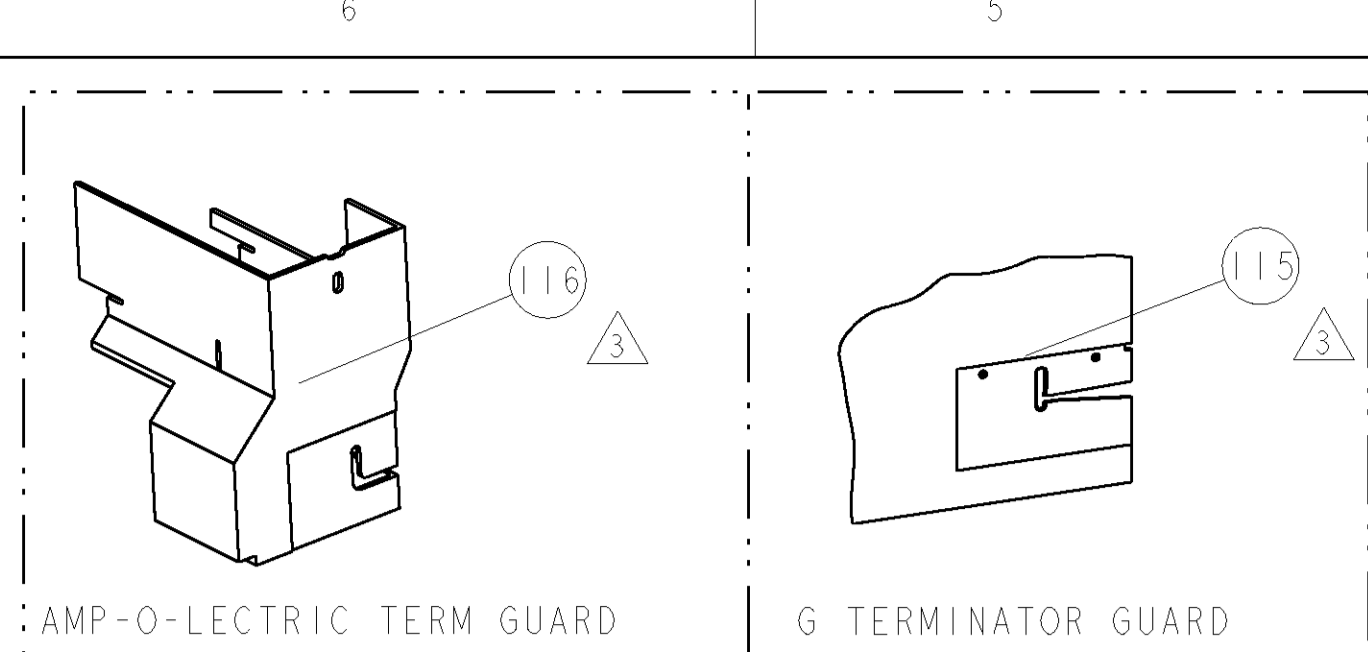


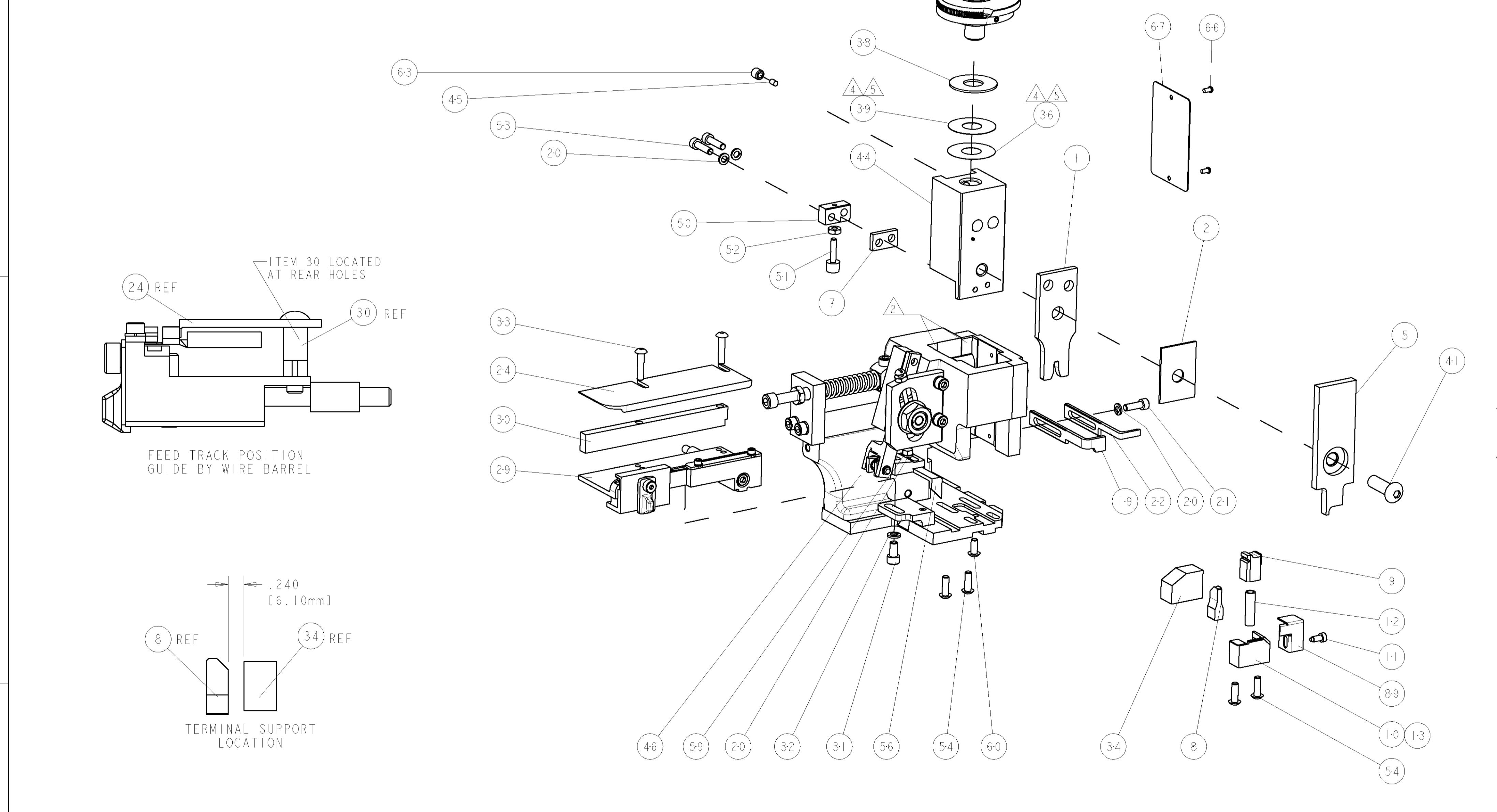
PART NUMBER	REV	FIRST USED	POWER UNIT	FEED TYPE	DESCRIPTION
1855503-1	B	122500-1	LEADMAKER	POST FEED	CUTS CARRIER
1855503-2	B	565435-5	BENCH MODEL K	PRE FEED	CUTS CARRIER
1855503-3	B	354500-1	BENCH MODEL G	PRE FEED	CUTS CARRIER
1855503-6	B	122500-1	LEADMAKER	POST FEED	CONTINUOUS CARRIER
7-1855503-7	B	-	-	-	SPARE PARTS



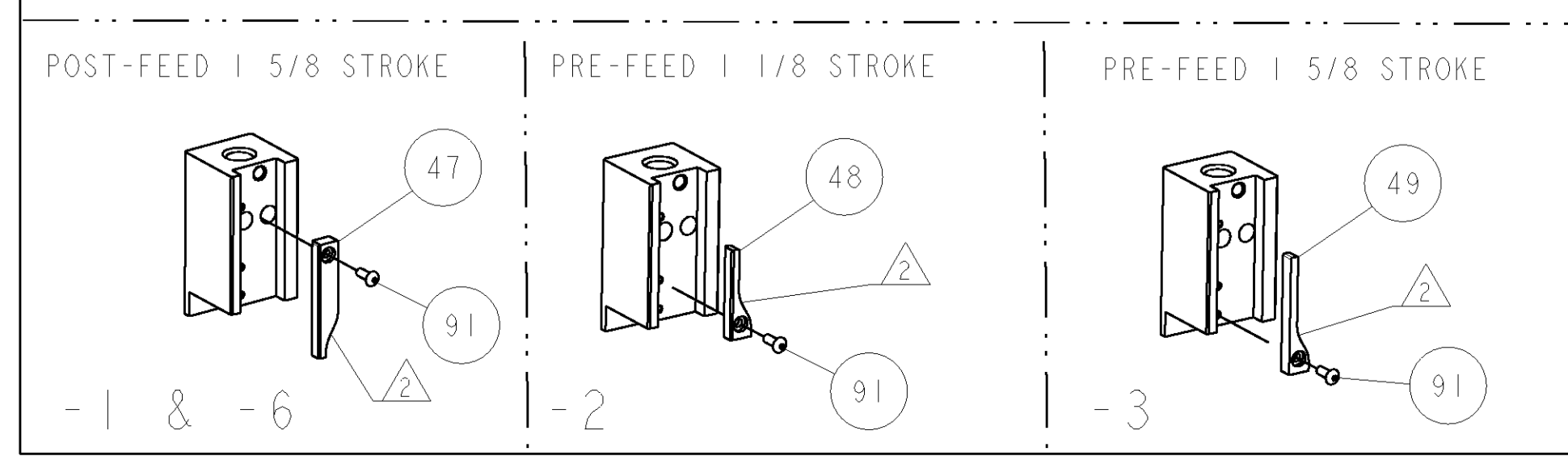
10AWG (A)		12/14AWG (B)		TE TERMINAL - TE CRIMP SPECS	
2106355	4	2058453	5	CRIMP HEIGHT	WIRE SIZE
2106356	4	2058454	5	(A) 2.74mm±.05/-0.05 [ .108±.002/-0.002 ]	10AWG or 6mm2
-	-	-	-	(B) 2.14mm±.05/-0.05 [ .084±.002/-0.002 ]	12AWG or 4mm2
-	-	-	-	(B) 1.84mm±.05/-0.05 [ .072±.002/-0.002 ]	14AWG or 2.5mm2
-	-	-	-	CRIMP	SIZE
-	-	-	-	WIRE	3.30mm [ .130 ]
-	-	-	-	INSUL	-
WIRE STRIP LENGTH	5.00-8.00	TERM APPL SPEC	114-13256	FEED	14.99
APPLICATOR INSTRUCTIONS			408-8040		
SET UP GAGE			458637-1		

- △ RECOMMENDED SPARE PARTS
- △ GREASE LIGHTLY
- △ GUARD MUST BE IN PLACE WHEN OPERATING APPLICATOR IN A BENCH MACHINE
- △ REMOVE ITEMS 36 & 39 TO RUN 10AWG WITH TERMINALS 2106355 & 2106356.
- △ ADD ITEMS 36 & 39 TO RUN 14 & 12AWG WITH TERMINALS 2058453 & 2058454.

**\* WARNING**  
ON INSTALLATION, SET WIRE DISC TO LARGEST WIRE SIZE SETTING. USE OF SETTINGS BELOW MIN. REQUIRED CRIMP HEIGHT SETTING WILL CAUSE DAMAGE TO CRIMP TOOLING.



QTY	REF	DESCRIPTION	DATE	OWN	APPROV
1	REF	455749-1	15OCT2009	RK	TE
1	REF	679532-1	15OCT2009	RK	TE
1	1	1-21002-7	15OCT2009	RK	TE
1	1	318563-1	15OCT2009	RK	TE
1	1	4088040	15OCT2009	RK	TE
1	1	217238-1	15OCT2009	RK	TE
1	1	461264-5	15OCT2009	RK	TE
2	2	21017-2	15OCT2009	RK	TE
1	1	21009-2	15OCT2009	RK	TE
1	1	22733-8	15OCT2009	RK	TE
1	1	2-22603-0	15OCT2009	RK	TE
1	1	458537-2	15OCT2009	RK	TE
4	4	2-21002-2	15OCT2009	RK	TE
2	2	2-21000-8	15OCT2009	RK	TE
1	1	21018-5	15OCT2009	RK	TE
1	1	811242-2	15OCT2009	RK	TE
1	1	690753-1	15OCT2009	RK	TE
1	1	690602-6	15OCT2009	RK	TE
1	1	690602-5	15OCT2009	RK	TE
1	1	690501-4	15OCT2009	RK	TE
1	1	459456-1	15OCT2009	RK	TE
1	1	690191-1	15OCT2009	RK	TE
1	1	1-455673-4	15OCT2009	RK	TE
1	1	7-21002-9	15OCT2009	RK	TE
1	1	690125-1	15OCT2009	RK	TE
1	1	1-469367-1	15OCT2009	RK	TE
1	1	879103-4	15OCT2009	RK	TE
1	1	469367-2	15OCT2009	RK	TE
1	1	690786-6	15OCT2009	RK	TE
2	2	2-21002-4	15OCT2009	RK	TE
1	1	21024-5	15OCT2009	RK	TE
1	1	3-21000-4	15OCT2009	RK	TE
1	1	1320908-1	15OCT2009	RK	TE
1	1	1633091-1	15OCT2009	RK	TE
1	1	1320928-5	15OCT2009	RK	TE
1	1	690472-2	15OCT2009	RK	TE
1	1	2-21000-7	15OCT2009	RK	TE
4	4	21024-4	15OCT2009	RK	TE
1	1	691353-1	15OCT2009	RK	TE
1	1	679625-2	15OCT2009	RK	TE
1	1	3-22280-3	15OCT2009	RK	TE
1	1	690461-2	15OCT2009	RK	TE
1	1	1-690459-0	15OCT2009	RK	TE
1	1	462006-6	15OCT2009	RK	TE
1	1	1633813-1	15OCT2009	RK	TE
1	1	240641-5	15OCT2009	RK	TE
-	-	-	15OCT2009	RK	TE
1	1	3-455889-9	15OCT2009	RK	TE
-	-	-	15OCT2009	RK	TE
-	-	-	15OCT2009	RK	TE
1	1	1-455888-0	15OCT2009	RK	TE
1	1	3-456410-0	15OCT2009	RK	TE



DIMENSIONS: INCHES		TOLERANCES UNLESS OTHERWISE SPECIFIED:		DWN: STAKEM 15APR2009		CHK: G. BAILEY 15APR2009		APVD: N. DEMING 15APR2009		NAME: FINE ADJUST SIDE FEED HDM APPLICATOR	
0 PLC	±	1 PLC	±0.1	2 PLC	±0.01	3 PLC	±0.001	4 PLC	±0.0001	SIZE: A1	CAGE CODE: 00779
MATERIAL:		FINISH:		WEIGHT:		CUSTOMER ACCESSIBLE PRODUCTION DRAWING		SCALE: 3:5		SHEET 1 OF 1	