

4

3

2

1


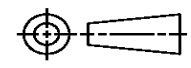
THIS DRAWING IS UNPUBLISHED. RELEASED FOR PUBLICATION  
© COPYRIGHT ALL RIGHTS RESERVED.

LOC		DIST		REVISIONS			
P	LTR	DESCRIPTION		DATE	DWN	APVD	
	D1	ECR-16-009823		18JUL2016	GK	SD	

# REPLACED BY OCEAN STYLE APPLICATOR PART NUMBER 2836146-1

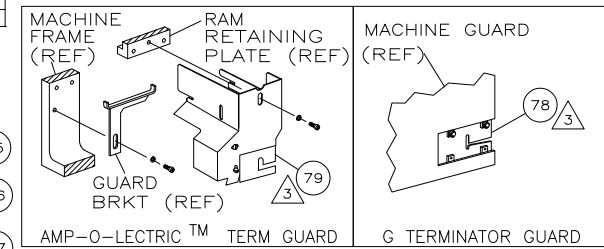
FOR REPLACEMENT PARTS FOR APPLICATOR 1385377  
REFER TO ADDITIONAL PAGE(S). SPARE PARTS KIT (IF LISTED)  
WILL REMAIN AVAILABLE.

THE REPLACEMENT OCEAN STYLE APPLICATOR HAS THE  
SAME TERMINATOR/PRESS INTERFACE AS APPLICATOR  
1385377

THIS DRAWING IS A CONTROLLED DOCUMENT.		DWN	GOPALAKRISHNA HV			TE Connectivity			
DIMENSIONS:		CHK	GOPALAKRISHNA HV			NAME			
		TOLERANCES UNLESS OTHERWISE SPECIFIED:		SIDE FEED HDM APPLICATOR					
		0 PLC	±	APVD	STOUGH DALE		PRODUCT SPEC		
MATERIAL		1 PLC	±	APPLICATION SPEC		SIZE	CAGE CODE	DRAWING NO	RESTRICTED TO
FINISH		2 PLC	±	WEIGHT		A3		©- 1385377	
		3 PLC	±	CUSTOMER DRAWING		SCALE	SHEET 1 OF 2	REV D1	
		4 PLC	±						
		ANGLES	±						

THIS DRAWING IS UNPUBLISHED. RELEASED FOR PUBLICATION  
 © COPYRIGHT BY TYCO ELECTRONICS CORPORATION. ALL RIGHTS RESERVED.

PART NUMBER	REV	FIRST USED
1385377-1	D	122500-1
1385377-2	D	565435-5
1385377-3	D	354500-1



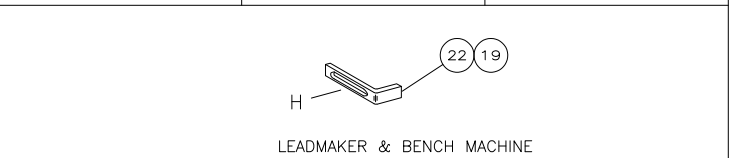
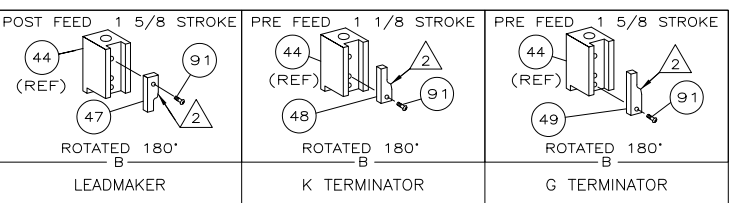
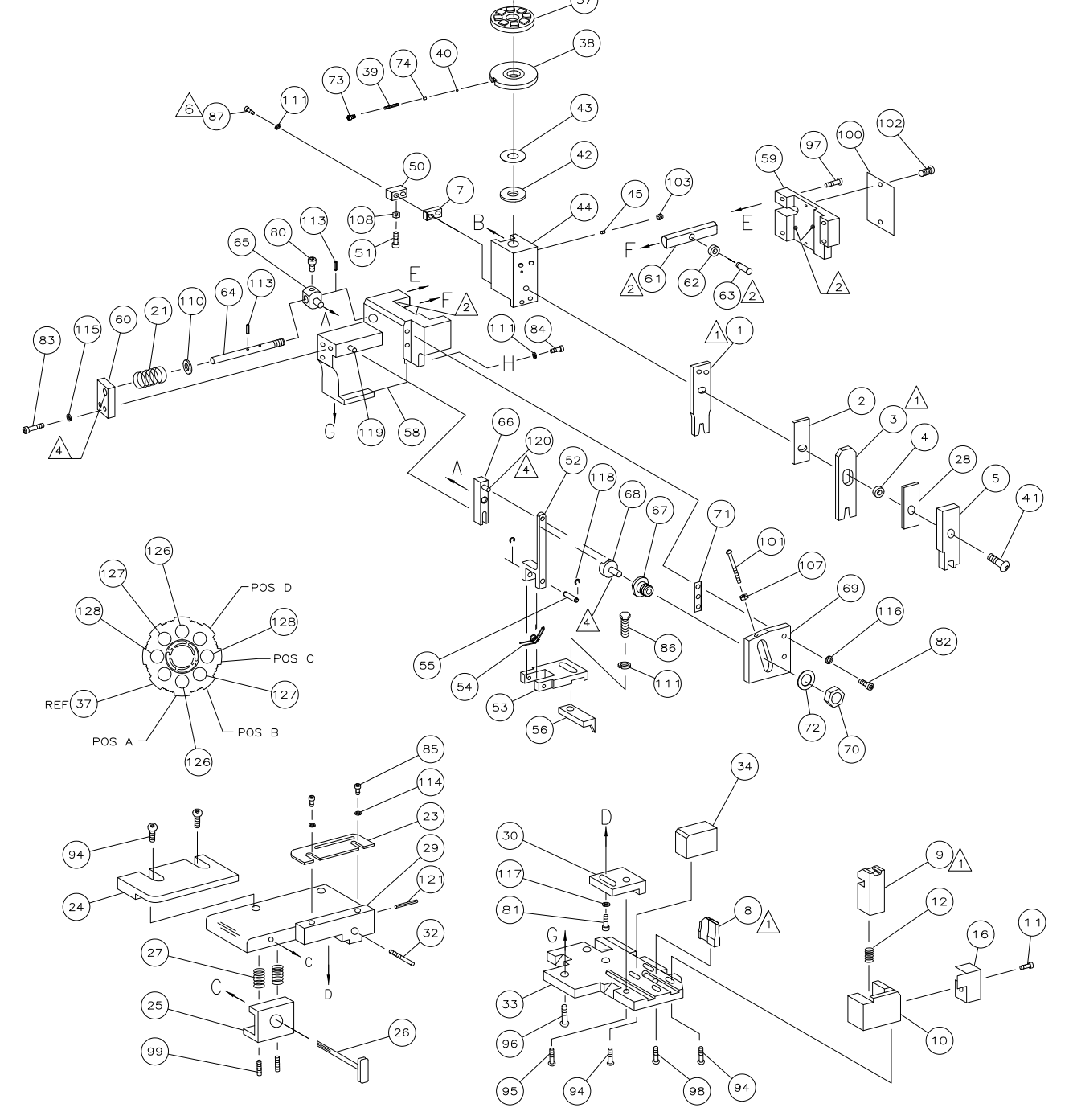
TERMINAL NAME: PLUG CONTACT, CRIMP SNAP, 26-30 AWG, MICRO MATE-N-LOK

PAD LTR	AMP TERMINAL AMP CRIMP SPECS		
	CRIMP HEIGHT	WIRE SIZE	
A	.022 ±.002 [0.56 ±0.05mm]	26	
B	.021 ±.002 [0.53 ±0.05mm]	28	
C	.020 ±.002 [0.51 ±0.05mm]	30	
D	NOT USED		
CRIMP	SIZE	TYPE	RANGE
	WIRE .042 [1.07mm]	F	30-26
INSUL .070 [1.78mm]	F		0.89-1.52mm

WIRE STRIP LENGTH	TERM APPL SPEC	FEED	APPL INSTRUCTION	SET UP GAGE	LAYOUT
.114-.131	114-13000	.250	408-8040	458637-1	L2624

LOC	DIST	REVISIONS			
P	LR	DESCRIPTION	DATE	DWN	APVD
A	66	ECR-07-023678	10-2007	MY	GB

REV	BY	DESCRIPTION
-1	LEADMAKER	MECH POST FEED
-2	BENCH MODEL K	MECH PRE FEED
-3	BENCH MODEL G	MECH PRE FEED



- 1 RECOMMENDED SPARE PARTS.
- 2 GREASE LIGHTLY.
- 3 GUARD MUST BE IN PLACE WHEN OPERATING APPLICATOR IN A BENCH MACHINE.
- 4 LUBRICATE DAILY USING NO. 20 MACHINE OIL.
- 5. ITEMS WITH QTY OF REF SPECIFIED (EXCEPT ITEMS 78 AND 79) ARE USED ON ITEM 46.
- 6 CUT TO LENGTH AT ASSEMBLY

QTY REQD PER ASSY	PART NO	DESCRIPTION	ITEM NO		
129					
2	6-354779-8	PIN, WIRE DISC (.3330)C	128		
2	6-354779-7	PIN, WIRE DISC (.3325)B	127		
2	6-354779-6	PIN, WIRE DISC (.3320)A	126		
1	986950-1	WASHER, FLAT PRECISION	125		
1	217238-1	GENERAL INSTRUCTION PACKAGE	124		
1	4088040	SF APPL INST 408-8040	123		
1	4-21028-0	PIN,SLT SPR(Ø.093x.75)ST GDE PL	121		
REF	1-21030-1	PIN,DOWEL(Ø.187x.50)LEVER	120		
REF	1-21030-6	PIN,DOWEL(Ø.187x1.25)HOUSING	119		
REF	21045-3	RING,RET "C"(Ø.187)FD FING PIN	118		
1	21024-5	WASHER, LOCK(#10)ADJ BLOCK	117		
REF	21024-5	WASHER,LOCK(#10)ADJ PLATE	116		
REF	21024-5	WASHER,LOCK(#10)FEED GDE ROD	115		
2	21024-2	WASHER,LOCK(#4)FRONT STP GUIDE	114		
REF	5-21028-1	PIN,SLT SPR(Ø.125x.50)ADJ ROD	113		
1	21024-4	WASHER,LOCK(#8)STRIPPER	111		
REF	21899-4	WASHER,FLAT(Ø5/16)SCREW ADJ	110		
1	21018-5	NUT,HEX(NO.6)HOLDDOWN	108		
REF	21068-5	NUT,HEX(6-32)FEED ADJ	107		
1	21009-2	SCR,SKT SET(1/4-20x.25 LW)RAM	103		
2	21017-2	SCR,DRIVE(#2x.19)ID PLATE	102		
REF	6-23715-5	SCR,PAN HD(6-32x1.50)FEED ADJ	101		
1	461264-1	PLATE, IDENTIFICATION	100		
2	5-21006-6	SCR,SET10-32x.75)DRAG	99		
REF	22733-8	SCR,BHC(8-32x.38 LW)ANVIL	98		
REF	2-21002-9	SCR,BHC(10-32x.75)CAP	97		
REF	2-22733-8	SCR,BHC(1/4-20x.62)HOUSING	96		
REF	2-21002-7	SCR,BHC(10-32x.50)SG ADJ BLOCK	95		
6	2-21002-2	SCR,BHC(8-32x.50)TERM H DWN	94		
1	1-21002-7	SCR,BHC(6-32x.38)CAM	91		
2	2-21000-8	SCR,SHC(8-32x.62)DEP-HOLD	87		
1	2-22603-0	SCR,HEX HD(8-32x.31)FEED FINGER	86		
2	1-21000-3	SCR,SHC(4-40x.25)FR ST GUIDE	85		
1	2-21000-7	SCR,SHC(8-32x.50)STRIPPER	84		
REF	3-21000-7	SCR,SHC(10-32x.75)FEED ROD GD	83		
REF	3-21000-6	SCR,SHC(10-32x.62)FD ADJ BLK	82		
1	7-21000-6	SCR,SHC(10-32x.31)SG ADJ BL	81		
REF	3-21000-4	SCR,SHC(10-32x.38)PIVOT BLK	80		
-	455749-1	GUARD, WINDOW	79		
REF	679532-1	INSERT, GUARD	78		
1	690603-1	SPRING, ASSIST	74		
1	23030-1	SCR,SHC(6-32x.25 SL)INS DISC	73		
REF	458109-1	WASHER, SPECIAL	72		
REF	690517-1	SPACER	71		
-3	-2	-1	U/M		

QTY REQD PER ASSY	PART NO	DESCRIPTION	ITEM NO		
1	22594-8	NUT,HEX(1/2-20)	70		
REF	240628-1	PLATE, ADJUSTMENT	69		
REF	240626-1	SHAFT, PIVOT	68		
REF	240633-1	BUSHING	67		
REF	455680-1	LEVER, INTERMEDIATE	66		
REF	240629-1	BLOCK, PIVOT	65		
REF	240632-2	SCREW, ADJ FEED ROD	64		
REF	240659-3	PIN, CAM ROLLER	63		
REF	240658-1	ROLLER, CAM	62		
REF	454398-2	ROD, FEED	61		
REF	454178-1	GUIDE, FEED ROD	60		
REF	454220-1	CAP, RAM	59		
REF	454485-1	HOUSING	58		
1	458537-2	PAWL, FEED	56		
REF	240624-1	PIN, FEED FINGER	55		
REF	691499-1	SPRING, FEED FINGER	54		
REF	690541-1	HOLDER, FEED FINGER	53		
REF	455679-1	LEVER, TERMINAL FEED ARM	52		
1	811242-2	BUMPER, HOLDDOWN	51		
1	690753-1	SPACER, TONKER	50		
1	690602-6	CAM, PRE-FEED 1 5/8 ST	49		
-	690602-5	CAM, PRE-FEED 1 1/8 ST	48		
-	690501-4	CAM, POST-FEED 1 5/8 ST	47		
1	459456-1	APPLICATOR, BASIC (SUBASSY)	46		
1	690191-1	PLUG, NYLON	45		
1	455673-1	RAM	44		
1	690125-1	WASHER, LAMINATED	43		
1	690124-1	WASHER, RAM	42		
1	7-21002-9	BOLT, CRIMPER(5/16x1.00)	41		
1	23241-6	BALL, STEEL	40		
1	690170-1	SPRING, COMPRESSION	39		
1	690142-1	DISC, INSULATION	38		
1	354777-1	WIRE DISC, PLASTIC	37		
1	22480-5	WASHER, SPRING	36		
1	690212-1	POST, RAM	35		
1	690786-1	SUPPORT, TERMINAL	34		
REF	455675-1	PLATE, BASE	33		
1	690432-3	SCREW, ADJUSTMENT	32		
REF	455689-1	BLOCK, STRIP GUIDE ADJ	30		
1	455671-1	PLATE, STRIP GUIDE	29		
1	1-455888-0	SPACER, FRONT SHEAR DEP	28		
2	1-22284-0	SPRING, DRAG	27		
1	690546-1	LEVER, DRAG RELEASE	26		
1	240792-1	DRAG, TERMINAL	25		
1	6-690504-4	GUIDE, STRIP (REAR)	24		
1	690438-1	GUIDE, STRIP (FRONT)	23		
-	690472-2	STRIPPER	22		
REF	4-22284-9	SPRING, FEED RETURN	21		
1	691353-1	STRIPPER	19		
1	318563-1	GUARD, CHIP, FRONT	16		
1	3-22280-3	SPRING, SHEAR	12		
1	690461-1	STOP, SHEAR	11		
1	690459-1	HOLDER, SHEAR (FRONT)	10		
1	462006-1	SHEAR, FLOAT (FRONT)	9		
1	4-805887-6	ANVIL	8		
1	240641-2	SPACER, DEPRESSOR (REAR)	7		
1	2-455889-0	DEPRESSOR, SHEAR (FRONT)	5		
1	238011-6	SPACER, BLOCK CRIMPER	4		
1	4-683453-8	CRIMPER, INSULATION	3		
1	455888-1	SPACER, CRIMPER	2		
1	2-456401-5	CRIMPER, WIRE	1		
-3	-2	-1	U/M		

# Mouser Electronics

Authorized Distributor

Click to View Pricing, Inventory, Delivery & Lifecycle Information:

[TE Connectivity:](#)

[1385377-3](#)