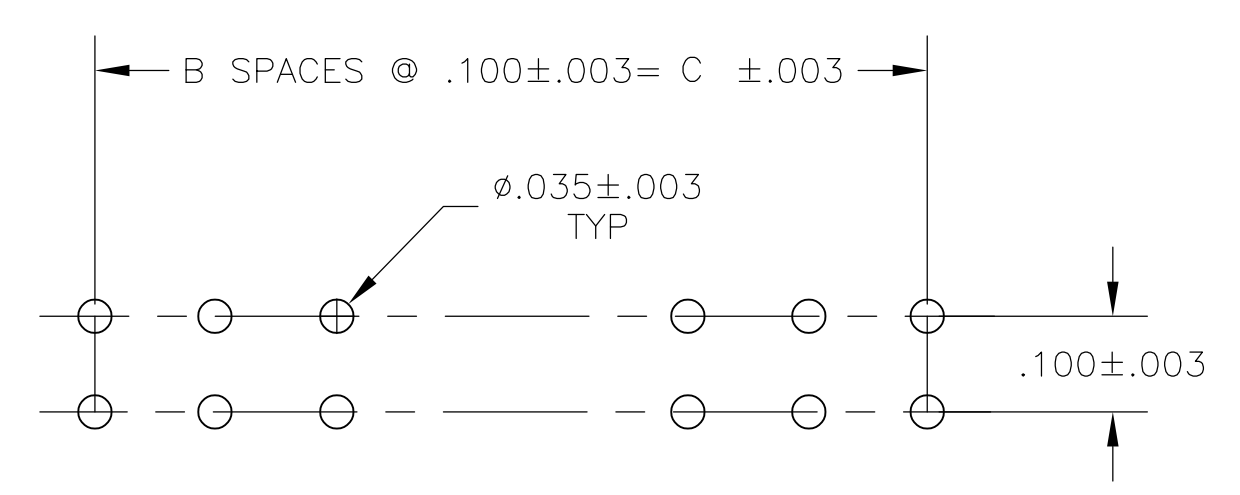
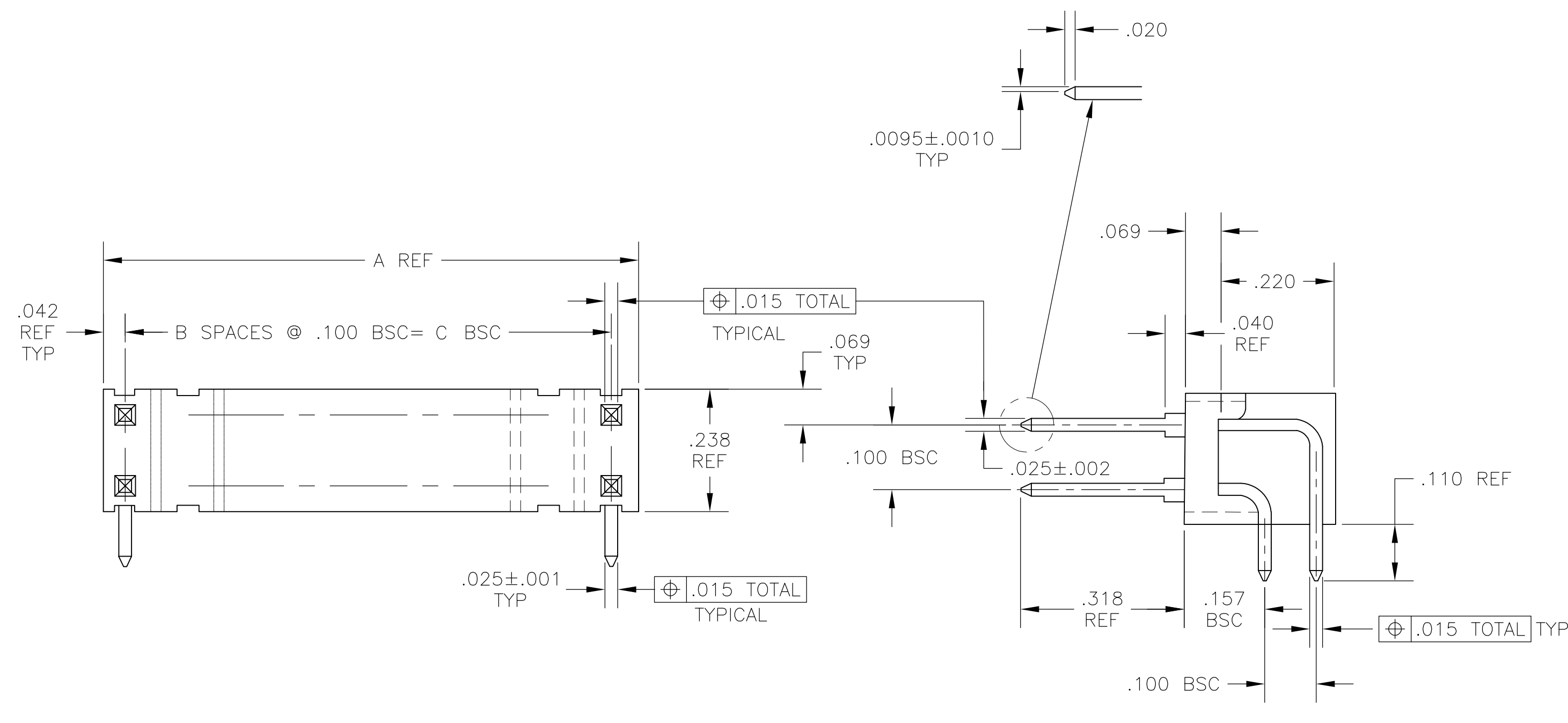


NOTES:

- 1 PRELIMINARY PART-NOT RELEASED FOR PRODUCTION.
- 2 .000100-.000200 BRIGHT TIN-LEAD OVER .000050 NICKEL.
- 3 .000100-.000200 MATTE TIN OVER .000050 NICKEL.
- 4 OBSOLETE PARTS: OBSOLETE CIS STREAMLINING PER D.RENAUD/D.SINISI



RECOMMENDED HOLE LAYOUT

3.900	39	3.984	80	4-87563-0
3.800	38	3.884	78	3-87563-9
3.700	37	3.784	76	3-87563-8
3.600	36	3.684	74	3-87563-7
3.500	35	3.584	72	3-87563-6
3.400	34	3.484	70	3-87563-5
3.300	33	3.384	68	3-87563-4
3.200	32	3.284	66	3-87563-3
3.100	31	3.184	64	3-87563-2
3.000	30	3.084	62	3-87563-1
2.900	29	2.984	60	3-87563-0
2.800	28	2.884	58	2-87563-9
2.700	27	2.784	56	2-87563-8
2.600	26	2.684	54	2-87563-7
2.500	25	2.584	52	2-87563-6
2.400	24	2.484	50	2-87563-5
2.300	23	2.384	48	2-87563-4
2.200	22	2.284	46	2-87563-3
2.100	21	2.184	44	2-87563-2
2.000	20	2.084	42	2-87563-1
1.900	19	1.984	40	2-87563-0
1.800	18	1.884	38	1-87563-9
1.700	17	1.784	36	1-87563-8
1.600	16	1.684	34	1-87563-7
1.500	15	1.584	32	1-87563-6
1.400	14	1.484	30	1-87563-5
1.300	13	1.384	28	1-87563-4
1.200	12	1.284	26	1-87563-3
1.100	11	1.184	24	1-87563-2
1.000	10	1.084	22	1-87563-1
0.900	9	0.984	20	1-87563-0
0.800	8	0.884	18	87563-9
0.700	7	0.784	16	87563-8
0.600	6	0.684	14	87563-7
0.500	5	0.584	12	87563-6
0.400	4	0.484	10	87563-5
0.300	3	0.384	8	87563-4
0.200	2	0.284	6	87563-3
0.100	1	0.184	4	87563-2
		0.084	2	87563-1

PLATING	C	B	A	NO OF POSN	PART NO
---------	---	---	---	------------	---------

THIS DRAWING IS A CONTROLLED DOCUMENT.

DIMENSIONS: INCHES

TOLERANCES UNLESS OTHERWISE SPECIFIED:

0 PLC	±	-
1 PLC	±	-
2 PLC	±	-
3 PLC	±	.005
4 PLC	±	-
ANGLES	±	-
FINISH	±	-

MATERIAL: HSG: GLASS FILLED NYLON, COLOR: BLACK, POST: PHOS BRONZE

FINISH: SEE TABLE

DWN: 08SEP75  
 CHK: 09SEP75  
 APVD: 15SEP75

TE Connectivity

PRODUCT SPEC: HEADER ASSY MOD II RIGHT, ANGLE .025 SQ POSTS DOUBLE ROW .100 X .100 CENTERS

APPLICATION SPEC: A1

SIZE: A1, CAGE CODE: 00779, DRAWING NO: 87563

RESTRICTED TO: CUSTOMER DRAWING

SCALE: 5:1, SHEET: 1 OF 2, REV: J3

LOC	DIST	REVISIONS					
AD	00	P	LYR	DESCRIPTION	DATE	DWN	APVD
-	-	-	-	SEE SHEET 1	-	-	-

3.900	39	3.984	80	9-87563-0	
3.800	38	3.884	78	8-87563-9	
3.700	37	3.784	76	8-87563-8	
3.600	36	3.684	74	8-87563-7	
3.500	35	3.584	72	8-87563-6	
3.400	34	3.484	70	8-87563-5	
3.300	33	3.384	68	8-87563-4	
3.200	32	3.284	66	8-87563-3	
3.100	31	3.184	64	8-87563-2	
3.000	30	3.084	62	8-87563-1	
2.900	29	2.984	60	8-87563-0	
2.800	28	2.884	58	7-87563-9	
2.700	27	2.784	56	7-87563-8	
2.600	26	2.684	54	7-87563-7	
2.500	25	2.584	52	7-87563-6	
2.400	24	2.484	50	7-87563-5	
2.300	23	2.384	48	7-87563-4	
2.200	22	2.284	46	7-87563-3	
2.100	21	2.184	44	7-87563-2	
2.000	20	2.084	42	7-87563-1	
1.900	19	1.984	40	7-87563-0	
1.800	18	1.884	38	6-87563-9	
1.700	17	1.784	36	6-87563-8	
1.600	16	1.684	34	6-87563-7	
1.500	15	1.584	32	6-87563-6	
1.400	14	1.484	30	6-87563-5	
1.300	13	1.384	28	6-87563-4	
1.200	12	1.284	26	6-87563-3	
1.100	11	1.184	24	6-87563-2	
1.000	10	1.084	22	6-87563-1	
0.900	9	0.984	20	6-87563-0	
0.800	8	0.884	18	5-87563-9	
0.700	7	0.784	16	5-87563-8	
0.600	6	0.684	14	5-87563-7	
0.500	5	0.584	12	5-87563-6	
0.400	4	0.484	10	5-87563-5	
0.300	3	0.384	8	5-87563-4	
0.200	2	0.284	6	5-87563-3	
0.100	1	0.184	4	5-87563-2	
		0.084	2	5-87563-1	
PLATING	C	B	A	NO OF POSN	PART NO

THIS DRAWING IS A CONTROLLED DOCUMENT.		DIN	08SEP75	<b>STE</b> TE Connectivity	
DIMENSIONS: INCHES		CIK	09SEP75		
TOLERANCES UNLESS OTHERWISE SPECIFIED:		APVD	15SEP75	NAME	
0. PLC ± -		PRODUCT SPEC		HEADER ASSY MOD II RIGHT	
1. PLC ± -		APPLICATION SPEC		ANGLE .025 SQ POSTS DOUBLE	
2. PLC ± -		SIZE		DRAWING NO	
3. PLC ± .005		WEIGHT		RESTRICTED TO	
4. PLC ± -		A1		00779	
ANGLES ± -		CUSTOMER DRAWING		SCALE 5:1	
FINISH SEE TABLE		SHEET 2		OF 2	
MATERIAL HSG: GLASS FILLED NYLON		REV		J3	
COLOR: BLACK		REV		J3	
POST: PHOS. BRONZE		REV		J3	