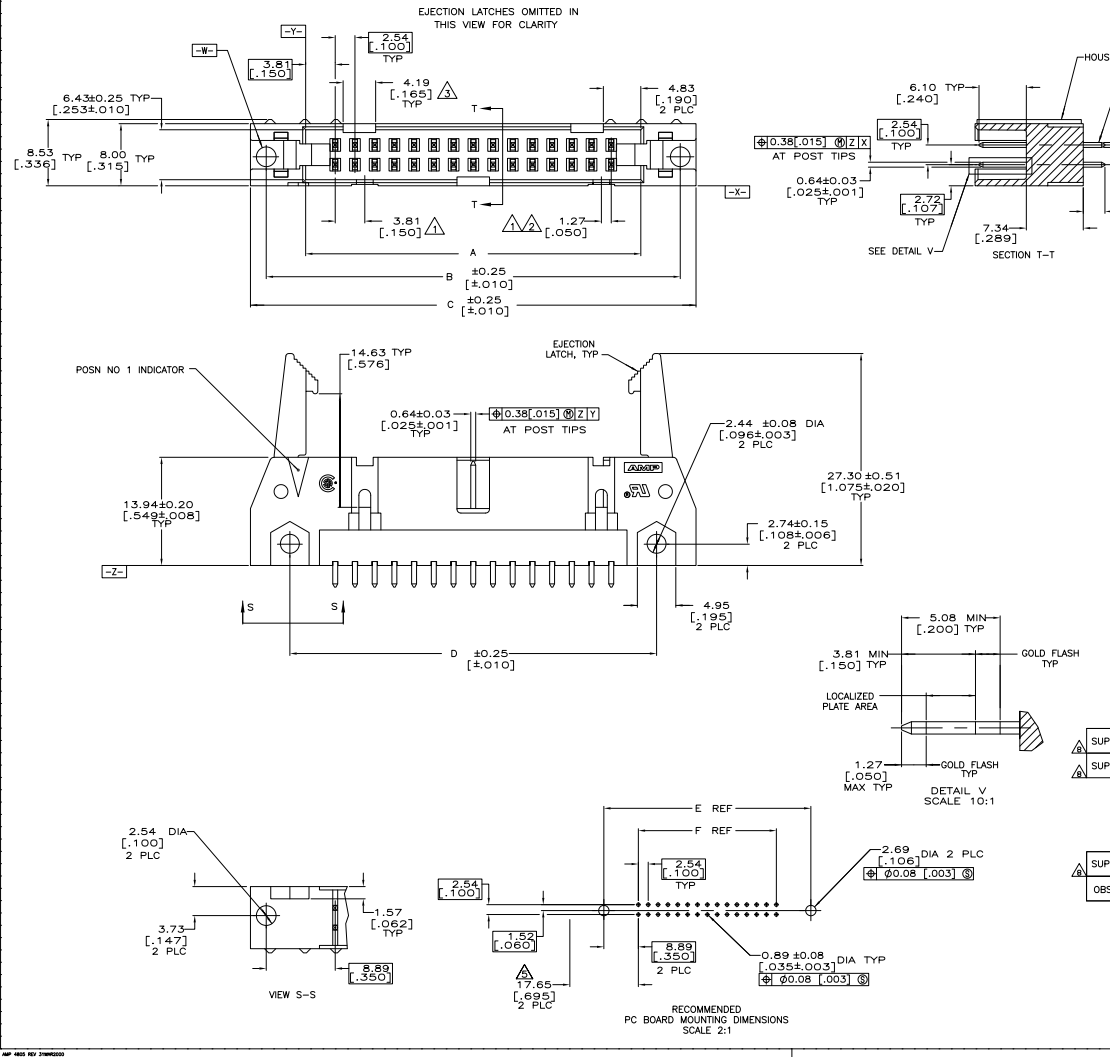


THIS DRAWING IS UNCLASSIFIED  
 UNLESS INDICATED OTHERWISE  
 © 2005 BY TDS ELECTRONICS CORPORATION ALL RIGHTS RESERVED

REV	DATE	DESCRIPTION	BY	APP
GP 00				
H		REVISED FOR ECO-10-011003	23NOV10	HMR SB



- ▲ COORDINATE DIMENSION APPLIES FROM BASIC LOCATION.
- ▲ 10 AND 14 POSITION SIZES CONTAIN ONLY ONE SLOT FOR SNAP-IN POLARIZER (MILITARY POLARIZATION) LOCATED AS SHOWN.
- ▲ 10 POSITION SIZES CONTAIN ONLY ONE SLOT FOR DUAL POLARIZATION, LOCATED AS SHOWN.
- 4. RECOMMENDED PRINTED CIRCUIT BOARD THICKNESS IS 1.57 [0.062].
- ▲ DISTANCE REQUIRED BY EJECTION LATCHES IN THE OPEN POSITION.
- ▲ POSTS: GOLD FLASH OVER PALLADIUM-NICKEL PLATE, 0.38µm [0.00015] MIN TOTAL ON THE LOCALIZED PLATE AREA, 2.54µm [0.00100] MIN TIN-LEAD PLATE ON THE SOLDER-TAIL, 1.27µm [0.00050] MIN NICKEL UNDERPLATE ON THE ENTIRE POST. OR 0.38µm [0.00015] MIN GOLD PLATE ON THE LOCALIZED PLATE AREA, 2.54µm [0.00100] MIN TIN-LEAD PLATE ON THE SOLDER-TAIL, 1.27µm [0.00050] MIN NICKEL UNDERPLATE ON THE ENTIRE POST.
- ▲ MATERIAL: HOUSING: GLASS FILLED NYLON OR POLYESTER, 94V-0 RATED, BLACK. POSTS: PHOSPHOR BRONZE OR BRASS
- ▲ OBSOLETE PARTS: OBSOLETE CIS STREAMLINING PER D.RENAUD/D.SINISI

	60.96	78.74	72.64	82.80	78.74	68.58	50	1-1364106-0
▲ SUPERSEDED	2.400	3.100	2.860	3.260	3.100	2.700		
▲ SUPERSEDED	60.96	78.74	72.64	82.80	78.74	68.58	50	1-1364106-0
	2.400	3.100	2.860	3.260	3.100	2.700		
	35.56	53.34	47.24	57.40	53.34	43.18		
	1.400	2.100	1.860	2.260	2.100	1.700	30	1364106-7
	30.48	48.26	42.16	52.32	48.26	38.10	26	1364106-6
	1.200	1.900	1.660	2.060	1.900	1.500	20	1364106-4
	22.86	40.64	34.54	44.70	40.64	30.48		
	1.900	1.600	1.360	1.760	1.600	1.200		
▲ SUPERSEDED	15.24	33.02	26.92	37.08	33.02	22.86	14	1-1364106-2
	6.00	1.300	1.060	1.460	1.300	1.900		
OBSOLETE	10.16	27.94	21.84	32.00	27.94	17.78	10	1364106-1
	1.400	1.100	1.860	1.260	1.100	1.700		

THIS DRAWING IS A CONTROLLED DOCUMENT.				REVISED FOR ECO-10-011003				TDS Electronics Corporation Harrisburg, PA 17105-3608			
INCHES	MM	DECIMALS	FRACTIONS	INCHES	MM	DECIMALS	FRACTIONS	INCHES	MM	DECIMALS	FRACTIONS
1/16	1.5875	0.0625	1/16	1.5875	0.0625	1/16	1/16	1.5875	0.0625	1/16	1/16
1/32	3.1750	0.03125	1/32	3.1750	0.03125	1/32	1/32	3.1750	0.03125	1/32	1/32
1/64	6.3500	0.015625	1/64	6.3500	0.015625	1/64	1/64	6.3500	0.015625	1/64	1/64
3/128	15.8750	0.0078125	3/128	15.8750	0.0078125	3/128	3/128	15.8750	0.0078125	3/128	3/128
1/8	31.7500	0.0390625	1/8	31.7500	0.0390625	1/8	1/8	31.7500	0.0390625	1/8	1/8
3/16	47.6250	0.078125	3/16	47.6250	0.078125	3/16	3/16	47.6250	0.078125	3/16	3/16
1/4	63.5000	0.15625	1/4	63.5000	0.15625	1/4	1/4	63.5000	0.15625	1/4	1/4
5/16	79.3750	0.1953125	5/16	79.3750	0.1953125	5/16	5/16	79.3750	0.1953125	5/16	5/16
3/8	95.2500	0.234375	3/8	95.2500	0.234375	3/8	3/8	95.2500	0.234375	3/8	3/8
7/16	111.1250	0.2734375	7/16	111.1250	0.2734375	7/16	7/16	111.1250	0.2734375	7/16	7/16
1/2	127.0000	0.3125	1/2	127.0000	0.3125	1/2	1/2	127.0000	0.3125	1/2	1/2
5/8	158.7500	0.390625	5/8	158.7500	0.390625	5/8	5/8	158.7500	0.390625	5/8	5/8
3/4	190.5000	0.46875	3/4	190.5000	0.46875	3/4	3/4	190.5000	0.46875	3/4	3/4
7/8	222.2500	0.546875	7/8	222.2500	0.546875	7/8	7/8	222.2500	0.546875	7/8	7/8
1	254.0000	0.625	1	254.0000	0.625	1	1	254.0000	0.625	1	1
1 1/8	317.5000	0.78125	1 1/8	317.5000	0.78125	1 1/8	1 1/8	317.5000	0.78125	1 1/8	1 1/8
1 1/4	381.0000	0.9375	1 1/4	381.0000	0.9375	1 1/4	1 1/4	381.0000	0.9375	1 1/4	1 1/4
1 3/8	444.5000	1.09375	1 3/8	444.5000	1.09375	1 3/8	1 3/8	444.5000	1.09375	1 3/8	1 3/8
1 1/2	508.0000	1.25	1 1/2	508.0000	1.25	1 1/2	1 1/2	508.0000	1.25	1 1/2	1 1/2
1 5/8	571.5000	1.40625	1 5/8	571.5000	1.40625	1 5/8	1 5/8	571.5000	1.40625	1 5/8	1 5/8
1 3/4	635.0000	1.5625	1 3/4	635.0000	1.5625	1 3/4	1 3/4	635.0000	1.5625	1 3/4	1 3/4
1 7/8	698.5000	1.71875	1 7/8	698.5000	1.71875	1 7/8	1 7/8	698.5000	1.71875	1 7/8	1 7/8
2	762.0000	1.875	2	762.0000	1.875	2	2	762.0000	1.875	2	2
2 1/8	825.5000	2.03125	2 1/8	825.5000	2.03125	2 1/8	2 1/8	825.5000	2.03125	2 1/8	2 1/8
2 1/4	889.0000	2.1875	2 1/4	889.0000	2.1875	2 1/4	2 1/4	889.0000	2.1875	2 1/4	2 1/4
2 3/8	952.5000	2.34375	2 3/8	952.5000	2.34375	2 3/8	2 3/8	952.5000	2.34375	2 3/8	2 3/8
2 1/2	1016.0000	2.5	2 1/2	1016.0000	2.5	2 1/2	2 1/2	1016.0000	2.5	2 1/2	2 1/2
2 5/8	1079.5000	2.65625	2 5/8	1079.5000	2.65625	2 5/8	2 5/8	1079.5000	2.65625	2 5/8	2 5/8
2 3/4	1143.0000	2.8125	2 3/4	1143.0000	2.8125	2 3/4	2 3/4	1143.0000	2.8125	2 3/4	2 3/4
2 7/8	1206.5000	2.96875	2 7/8	1206.5000	2.96875	2 7/8	2 7/8	1206.5000	2.96875	2 7/8	2 7/8
3	1270.0000	3.125	3	1270.0000	3.125	3	3	1270.0000	3.125	3	3

AMP 400 REV 2/2005