

## Rear panel feed-through - SF-5EP1N8AC0DU - 1605517

Please be informed that the data shown in this PDF Document is generated from our Online Catalog. Please find the complete data in the user's documentation. Our General Terms of Use for Downloads are valid (<http://phoenixcontact.com/download>)




Rear panel feed-through, straight, Screw locking, M23, Number of positions: 5+PE, Type of contact: Male connector, Crimp connection, Axial O-ring, 4xM3, shielded: yes, Cable diameter: 7.5 mm...14 mm

The figure shows the 8-pos. (4+3+PE) product version



### Key Commercial Data

|                                      |   |
|--------------------------------------|---|
| Packing unit                         | 1 pc  |
| GTIN                                 | <br>4 046356 253314 |
| Weight per Piece (excluding packing) | 126.9 g   |
| Custom tariff number                 | 85366990  |
| Country of origin                    | Germany   |
| Note                                 | Made to Order (non-returnable)  |

### Technical data

#### General

|   |  |
|---|--|
| Note                                      | Order information Order crimp contacts 6 x Ø 2 mm separately |
| Type of locking                           | Screw locking  |
| Coding                                    | N  |
| Contact connection method                 | Crimp connection   |
| Type of contacts                          | Male connector   |
| Number of positions                       | 6  |
| Contact diameter of power contacts        | 2 mm   |
| Nominal current per power contact at 25°C | 30 A   |
| Contact diameter of signal contacts       | 2 mm   |
| Conductor entry                           | 7.5 mm ... 14 mm   |
| Pg housing screw connection               | none   |
| Mounting type                             | 4xM3   |

#### Ambient conditions

|                     |                   |
|---------------------|-------------------|
| Ambient temperature | -40 °C ... 125 °C |
|---------------------|-------------------|

# Rear panel feed-through - SF-5EP1N8AC0DU - 1605517

## Technical data

### Ambient conditions

|                      |      |
|----------------------|------|
| Degree of protection | IP67 |
|----------------------|------|

### Material

|                            |  |
|----------------------------|--|
| Housing material           | Turned parts: copper zinc alloy (CuZn), die-cast parts: zinc (GD-Zn) |
| Insulator material         | PA 66  |
| Gasket and O-ring material | FPM  |

### Specifications according to DIN EN 61984:2001

|   |        |
|---|--------|
| Installation height max.                      | 3000 m |
| Nominal / operating voltage of power contacts | 630 V  |
| Rated surge voltage of power contacts         | 6 kV   |
| Overvoltage category of power contacts        | III    |
| Degree of pollution of power contacts         | 3      |
| Rated surge voltage of signal contacts        | 6 kV   |
| Overvoltage category of signal contacts       | III    |
| Degree of pollution of signal contacts        | 3      |

## Classifications

### eCl@ss

|            |          |
|------------|----------|
| eCl@ss 4.0 | 272607xx |
| eCl@ss 4.1 | 27260701 |
| eCl@ss 5.0 | 27260701 |
| eCl@ss 5.1 | 27260701 |
| eCl@ss 6.0 | 27260708 |
| eCl@ss 7.0 | 27440312 |
| eCl@ss 8.0 | 27440103 |

### ETIM

|          |          |
|----------|----------|
| ETIM 3.0 | EC001121 |
| ETIM 4.0 | EC001121 |
| ETIM 5.0 | EC002061 |

### UNSPSC

|               |          |
|---------------|----------|
| UNSPSC 6.01   | 43172015 |
| UNSPSC 7.0901 | 43201404 |
| UNSPSC 11     | 43172015 |
| UNSPSC 12.01  | 43201404 |
| UNSPSC 13.2   | 43201404 |

## Approvals

### Approvals

# Rear panel feed-through - SF-5EP1N8AC0DU - 1605517

## Approvals

Approvals

UL Recognized / cUL Recognized

Ex Approvals

Approvals submitted

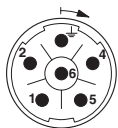
## Approval details

|                                |       |
|--------------------------------|-------|
| UL Recognized                  |       |
| mm <sup>2</sup> /AWG/kcmil     | 4.0   |
| Nominal current I <sub>N</sub> | 27 A  |
| Nominal voltage U <sub>N</sub> | 600 V |

|                                |       |
|--------------------------------|-------|
| cUL Recognized                 |       |
| mm <sup>2</sup> /AWG/kcmil     | 4.0   |
| Nominal current I <sub>N</sub> | 18 A  |
| Nominal voltage U <sub>N</sub> | 600 V |

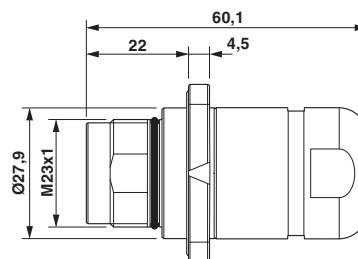
## Drawings

Schematic diagram



Connector pin assignment

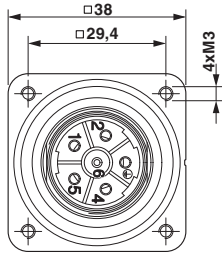
Dimensional drawing



Dimensional drawing

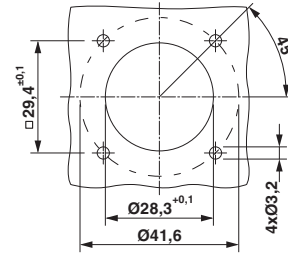
# Rear panel feed-through - SF-5EP1N8AC0DU - 1605517

Dimensional drawing



Flange dimensions

Dimensional drawing



Installation dimensions

Diagram

