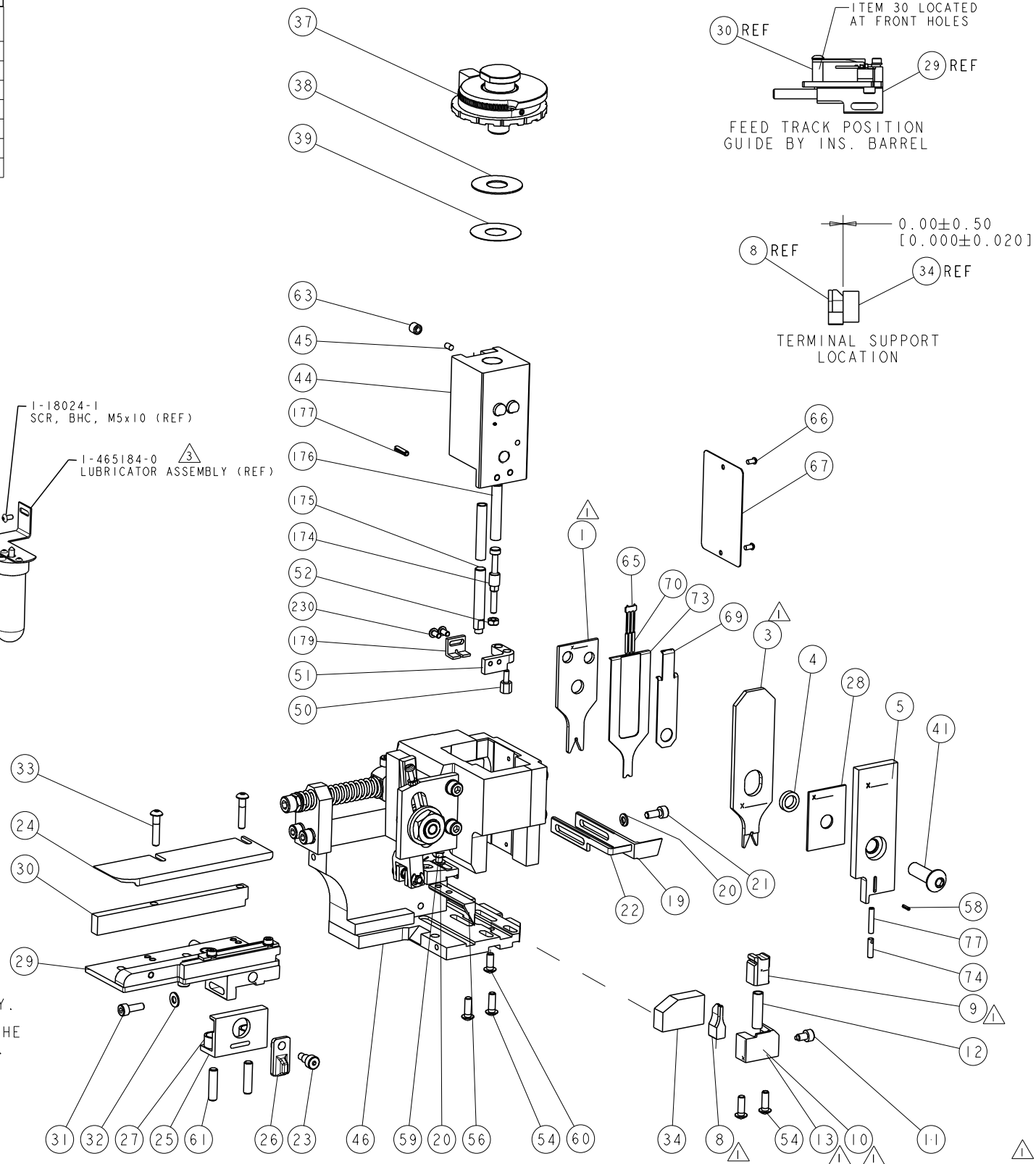
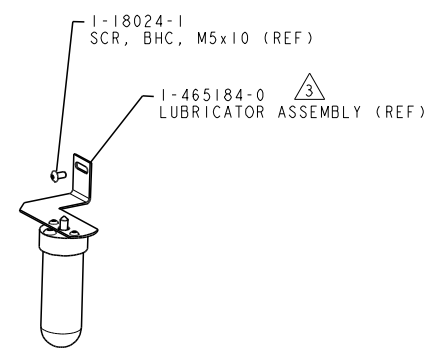
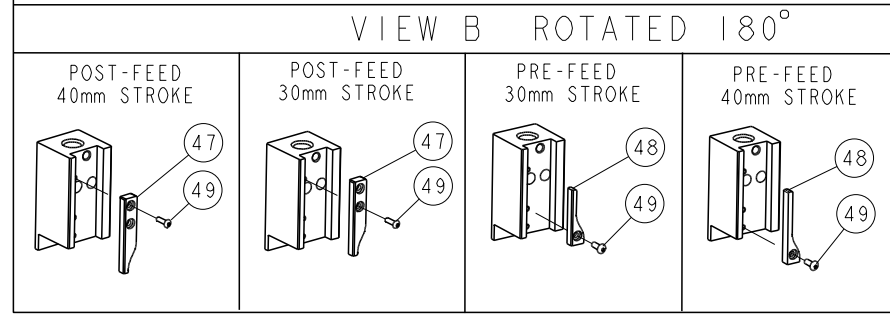


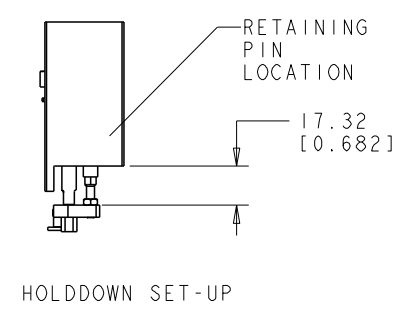
PART NUMBER	REV	TERMINATOR	FEED TYPE	DESCRIPTION
1530177-1	C	LEADMAKER	MECH POST FEED	CUTS CARRIER
1530177-2	C	BENCH	MECH PRE FEED	CUTS CARRIER
1530177-6	C	LEADMAKER	MECH POST FEED	CONTINUOUS CARRIER
7-1530177-1	C	LEADMAKER	MECH POST FEED	-1 AND SPARE PARTS
7-1530177-2	C	BENCH	MECH PRE FEED	-2 AND SPARE PARTS
7-1530177-6	C	LEADMAKER	MECH POST FEED	-6 AND SPARE PARTS
7-1530177-7	B	-	-	SPARE PARTS KIT

CRIMP DATA	TEC TERMINAL	TEC CRIMP SPECS
TERMINAL NAME: CONTACT, RECEPTACLE / TAB, CRIMP SNAP-IN		
CRIMP	SIZE	TYPE
WIRE	1.40 [0.055 IN]	F
INSUL	1.98 [0.078 IN]	O
RANGE: 20-18 AWG		
Ø 1.7-2.1 [0.067-0.083 IN]		
WIRE STRIP LENGTH: 2.20-2.70 [0.087-0.106 IN]		
APPL INSTRUCTIONS: 408-8322 & 408-8490		
TERMINAL APPL SPEC	114-13261	FEED: 9.00 [0.354 IN]
TERMINALS APPLIED		
RECEPTACLE	TAB	TAB
2106123-1	2106124-1	2106124-5
2106123-3	2106124-2	2106124-6
-	2106124-3	2106124-7
WIRE SIZE	CRIMP HEIGHT	REF SETTING
18 AWG	1.05 ± 0.05 [0.041 ± 0.002 IN]	A6
20 AWG	0.87 ± 0.05 [0.034 ± 0.002 IN]	C0

- RECOMMENDED SPARE PARTS.
- GREASE RAM, CAM, CAM FOLLOWER AND FEED ROD LIGHTLY.
- CERTAIN TERMINALS REQUIRE LUBRICATION. REFER TO THE APPLICATOR INSTRUCTION SHEET FOR MORE INFORMATION.
- LUBRICATE DAILY PER THE APPLICATOR INSTRUCTION SHEET SUPPLIED WITH THE APPLICATOR.



*** WARNING**
ON INSTALLATION, SET WIRE SIZE DISC TO LARGEST WIRE SIZE SETTING. USE OF SETTINGS BELOW MIN. REQUIRED CRIMP HEIGHT SETTING WILL CAUSE DAMAGE TO CRIMP TOOLING.



SET UP GAGE 458637-3		LOC A	DIST 66	REVISIONS			
#	LTN	DESCRIPTION	DATE	DWN	APVD		
B	ECR-10-017542		23AUG2010	RK	GB		
C	ECR-12-011324		21JUN2012	MY	GB		
C1	ECR-14-004979		04APR2014	KH	UG		

-	2	2	2	2	2	2	1655785-9	SCR, BTN SKT HD CAP (M3 X 6)	230
-	1	1	1	1	1	1	1-1976053-5	LOCATER BLOCK, TERMINAL	179
-	1	1	1	1	1	1	993111-8	PIN, SLOTTED SPRING 3.0 X 12.0	177
-	2	2	2	2	2	2	3-22280-7	SPRING, COMPRESSION	176
-	1	1	1	1	1	1	1752353-1	GUIDE PIN, HOLDDOWN	175
-	1	1	1	1	1	1	1901680-1	GUIDE PIN, HOLDDOWN	174
-	1	1	1	1	1	1	22278-7	SPRING, COMPRESSION	77
-	1	1	1	1	1	1	854769-4	HOLDER, INS	74
-	1	1	1	1	1	1	1490525-3	DEPRESSOR, WIRE	73
-	1	1	1	1	1	1	1338705-3	DOCUMENTATION PACKAGE	71
-	3	3	3	3	3	3	1-23147-4	SPRING, COMPRESSION	70
-	1	1	1	1	1	1	1490524-1	DEPRESSOR, SPACER	69
-	1	1	1	1	1	1	461264-5	PLATE, IDENTIFICATION	67
-	2	2	2	2	2	2	21017-2	SCREW, DRIVE	66
-	1	1	1	1	1	1	1424350-1	HOLDER, PIN, WIRED	65
-	1	1	1	1	1	1	3-18031-0	SCR, SET, CUP POINT M6 X 6.0	63
-	2	2	2	2	2	2	2-18032-5	SCR, SET, FLT POINT M5 X 20.0	61
-	1	1	1	1	1	1	18024-7	SCR, BTN SKT HD CAP (M4 X 10.0)	60
-	1	1	1	1	1	1	5-18022-2	SCR, HEX HD CAP M4 X 8.0	59
-	1	1	1	1	1	1	21028-2	PIN, SLOTTED SPRING .062 X .250	58
-	1	1	1	1	1	1	1338685-1	PAWL, FEED	56
-	4	4	4	4	4	4	18024-8	SCR, BTN SKT HD CAP (M4 X 12.0)	54
-	1	1	1	1	1	1	1-18030-0	NUT, HEX, REG M3.5	52
-	1	1	1	1	1	1	1-1901681-0	HOLDDOWN, TERMINAL	51
-	1	1	1	1	1	1	1-1752354-0	STANDOFF, HOLD-DOWN	50
-	1	1	1	1	1	1	18024-3	SCR, BTN SKT HD CAP (M3 X 10.0)	49
-	1	1	1	1	1	1	1338675-1	CAM, UNIVERSAL PRE FEED	48
-	1	1	1	1	1	1	1338676-1	CAM, UNIVERSAL POST-FEED	47
-	1	1	1	1	1	1	1320999-3	APPLICATOR SUBASSEMBLY, HDI	46
-	1	1	1	1	1	1	690191-1	PLUG, NYLON	45
-	1	1	1	1	1	1	1633724-5	RAM, (SIDE FEED)	44
-	1	1	1	1	1	1	2-18024-6	SCR, BTN SKT HD CAP (M8 X 25.0)	41
-	1	1	1	1	1	1	690125-1	SHIM SUB-ASSY	39
-	1	1	1	1	1	1	469367-8	SHIM	38
-	1	1	1	1	1	1	879103-3	FINE ADJUST HEAD ASSEMBLY	37
-	1	1	1	1	1	1	1-1752356-8	SUPPORT, TERMINAL	34
-	2	2	2	2	2	2	1-18024-0	SCR, BTN SKT HD CAP (M4 X 20.0)	33
-	1	1	1	1	1	1	18027-2	WASHER, FLAT, REG M4	32
-	1	1	1	1	1	1	1-18023-2	SCR, SKT HD CAP M4 X 12.0	31
-	1	1	1	1	1	1	1320908-4	SPACER, STRIP GUIDE	30
-	1	1	1	1	1	1	1633073-1	STRIP GUIDE ASSEMBLY	29
-	1	1	1	1	1	1	1-455888-0	SPACER, CRIMPER	28
-	2	2	2	2	2	2	1-22284-0	SPRING, COMPRESSION	27
-	1	1	1	1	1	1	356835-1	LEVER, DRAG RELEASE	26
-	1	1	1	1	1	1	240792-3	DRAG, TERMINAL	25
-	1	1	1	1	1	1	1320928-1	STRIP GUIDE	24
-	1	1	1	1	1	1	980371-4	SCR, SKT HD SHLDR 5.0 DIA X 6.0	23
-	1	1	1	1	1	1	1-690472-4	STRIPPER	22
-	1	1	1	1	1	1	1-18023-1	SCR, SKT HD CAP M4 X 10.0	21
-	2	2	2	2	2	2	18025-2	WASHER, SPRG LOCK, REG M4	20
-	1	1	1	1	1	1	1-1338987-9	STRIPPER	19
-	1	1	1	1	1	1	1338684-2	SHEAR HOLDER, FRONT	13
-	1	1	1	1	1	1	3-22280-3	SPRING, COMPRESSION	12
-	1	1	1	1	1	1	356885-5	STOP, SHEAR	11
-	1	1	1	1	1	1	1-1320921-0	SHEAR HOLDER, FRONT, CUT	10
-	1	1	1	1	1	1	462006-6	FLOATING SHEAR, FRONT	9
-	1	2	2	2	1	1	3-1633128-4	ANVIL, COMBINATION .055	8
-	-	-	-	-	-	-	-	-	7
-	-	-	-	-	-	-	-	-	6
-	1	1	1	1	1	1	854772-6	DEPRESSOR, SHEAR	5
-	1	1	1	1	1	1	1-238011-8	BLOCK, CRIMPER SPACER	4
-	1	2	2	2	1	1	1-1633757-3	CRIMPER, INSULATION O	3
-	-	-	-	-	-	-	-	-	2
-	1	2	2	2	1	1	2-1633730-1	CRIMPER, WIRE	1

THIS DRAWING IS A CONTROLLED DOCUMENT. DIMENSIONING AND TOLERANCING PER ASME Y14.5M-2009		DWN S.ZOU 06AUG2009	CHK T.ELBIN 06AUG2009	APVD N.DEMING 06AUG2009	NAME
DIMENSIONS: mm [IN]		TOLERANCES UNLESS OTHERWISE SPECIFIED:		PRODUCT SPEC	
0 PLC ±		1 PLC ±		APPLICATION SPEC	
2 PLC ±		3 PLC ±		See Table	
4 PLC ±		ANGLES ±		SIZE CAGE CODE DRAWING NO	
FINISH		WEIGHT		A100779C=1530177	
MATERIAL		RESTRICTED TO		Customer Accessible Production Drawing	
SCALE 3:5		SHEET 1 of 1		REV C	