

PART NUMBER	REV	TERMINATOR	FEED TYPE	DESCRIPTION
1530109-1	A	LEADMAKER	MECH POST FEED	CUTS CARRIER
1530109-2	A	BENCH	MECH PRE FEED	CUTS CARRIER
1530109-6	A	LEADMAKER	MECH POST FEED	CONTINUOUS CARRIER
7-1530109-1	A	LEADMAKER	MECH POST FEED	-1 AND SPARE PARTS
7-1530109-2	A	BENCH	MECH PRE FEED	-2 AND SPARE PARTS
7-1530109-6	A	LEADMAKER	MECH POST FEED	-6 AND SPARE PARTS
7-1530109-7	A	-	-	SPARE PARTS KIT

CRIMP	SIZE	TYPE	RANGE
WIRE	2.03 [1.080 IN]	F	0.75-1.5mm ²
INSUL	2.95 [1.116 IN]	F	2.34 [1.092 IN] MAX

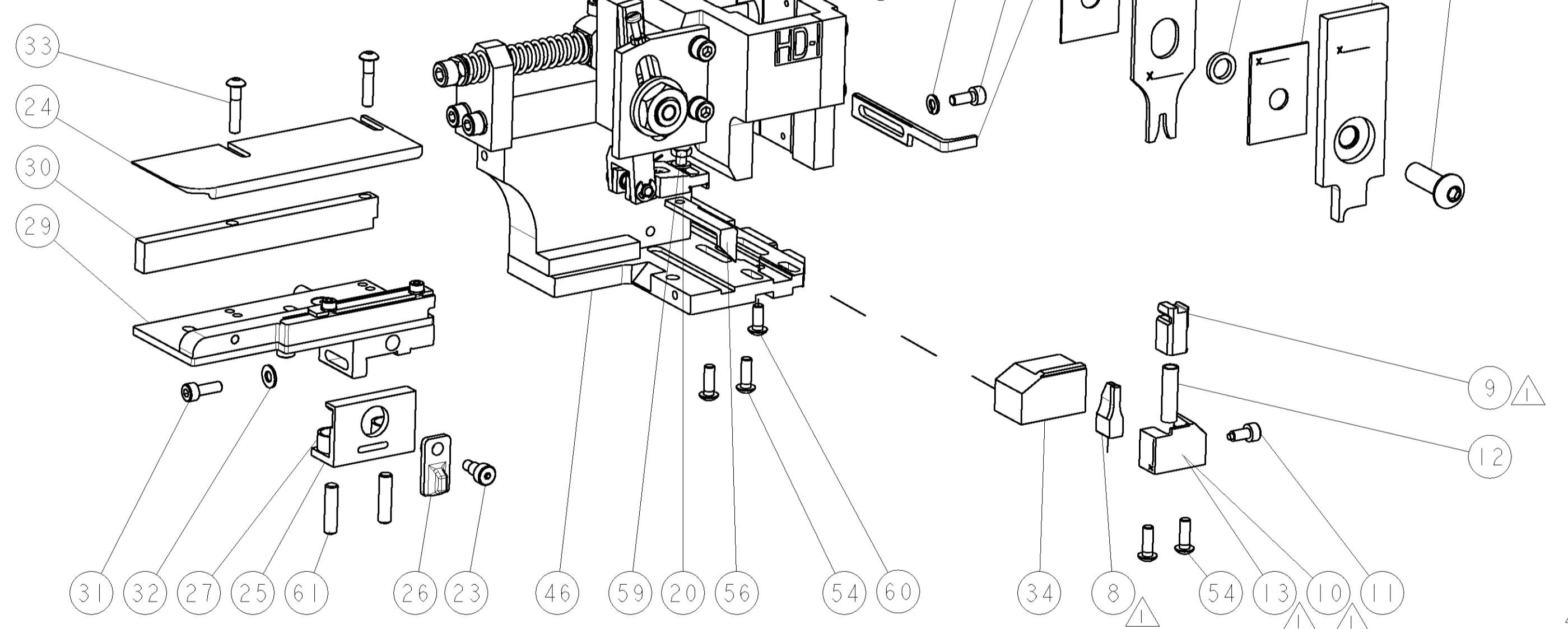
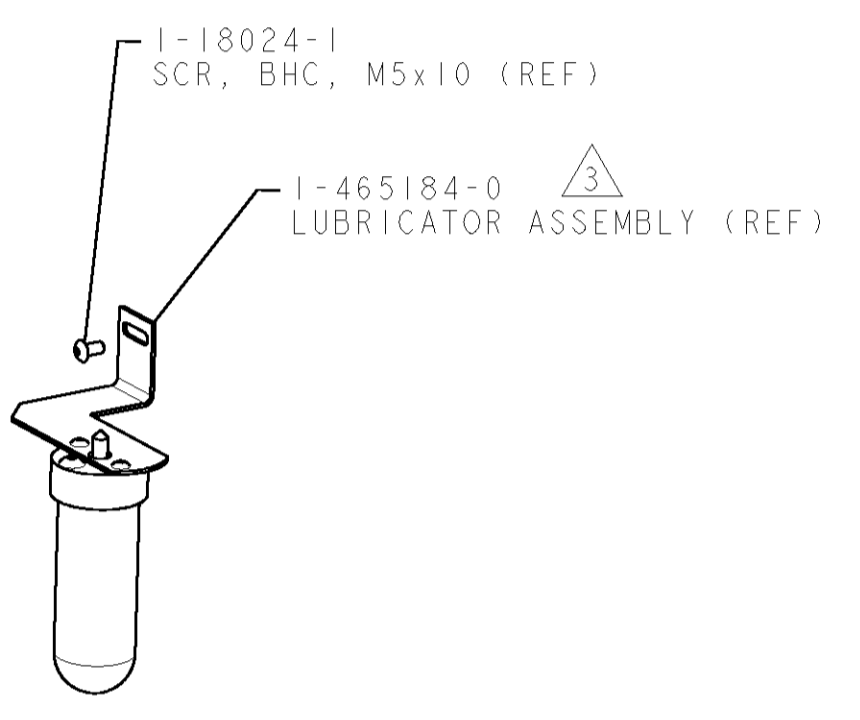
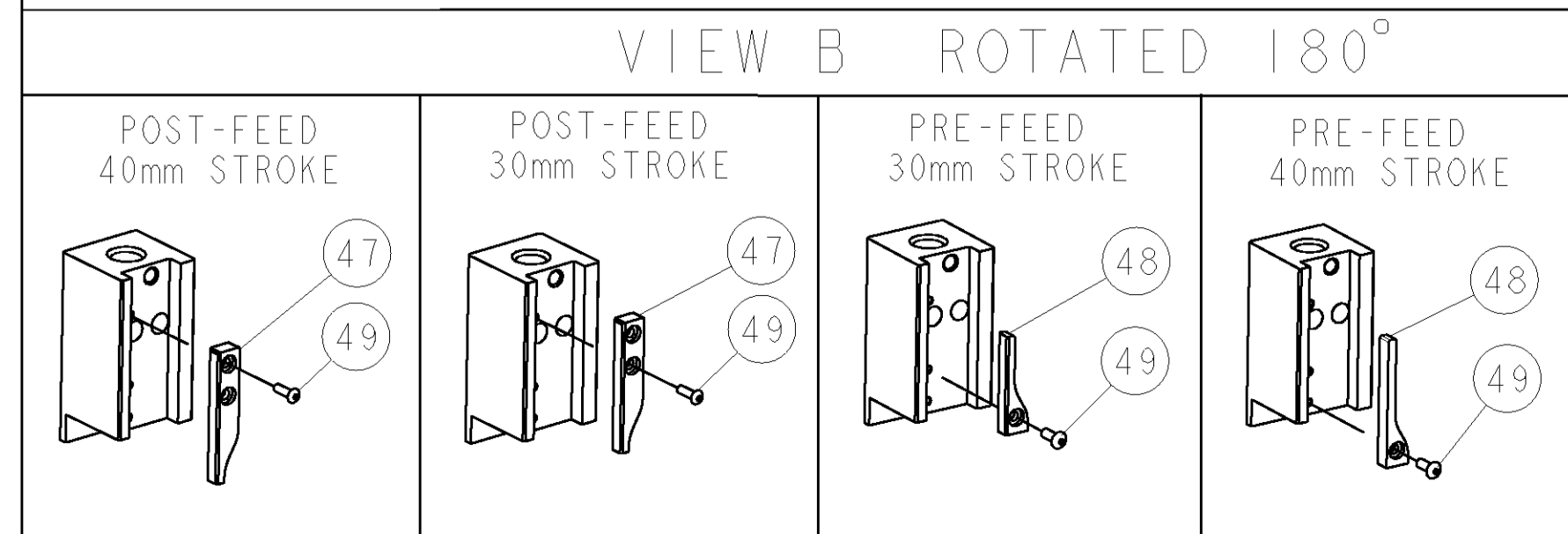
WIRE STRIP LENGTH 2.00-3.00 [1.078-1.118 IN] APPL INSTRUCTIONS 408-8322 & 408-8490

TERMINAL APPL SPEC	TERMINAL NONE	FEED 12.83 [1.505 IN]
--------------------	---------------	-----------------------

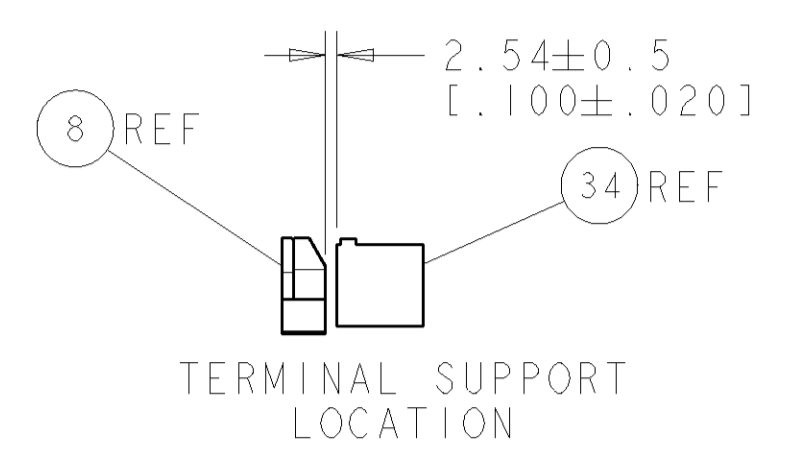
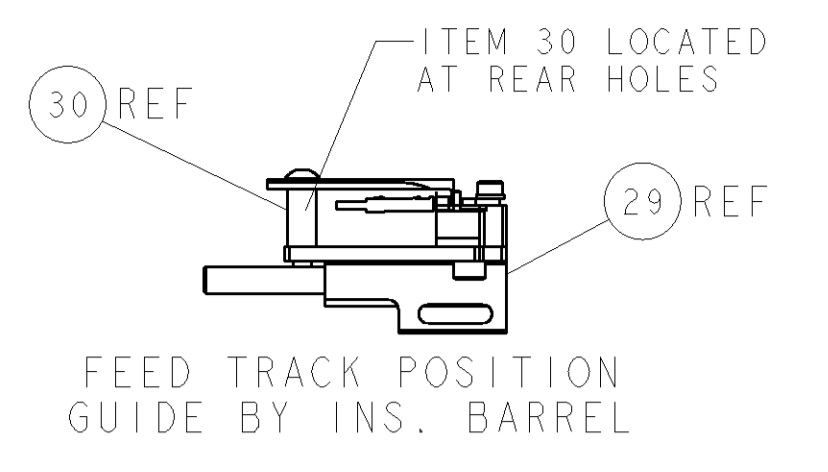
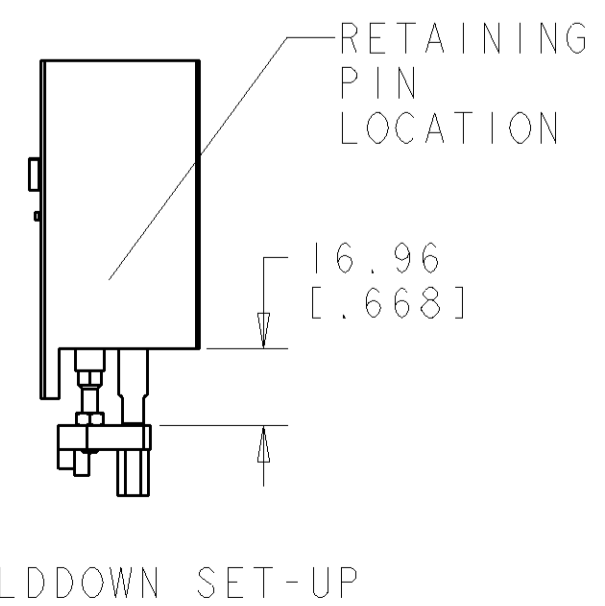
TE PN	MFG PN
1949940	1582260000

WIRE SIZE	CRIMP HEIGHT	REF SETTING
1.50mm ²	1.67 ± 0.05 [1.066 ± 0.002 IN]	B0
1.25mm ² or 16AWG	1.57 ± 0.05 [1.062 ± 0.002 IN]	B8
1.00mm ²	1.45 ± 0.05 [1.057 ± 0.002 IN]	C8
0.75mm ² or 18AWG	1.37 ± 0.05 [1.054 ± 0.002 IN]	D1

- RECOMMENDED SPARE PARTS.
- GREASE RAM, CAM, CAM FOLLOWER AND FEED ROD LIGHTLY.
- CERTAIN TERMINALS REQUIRE LUBRICATION. REFER TO THE APPLICATOR INSTRUCTION SHEET FOR MORE INFORMATION.
- LUBRICATE DAILY PER THE APPLICATOR INSTRUCTION SHEET SUPPLIED WITH THE APPLICATOR.



*** WARNING**
ON INSTALLATION, SET WIRE DISC TO LARGEST WIRE SIZE SETTING. USE OF SETTINGS BELOW MIN. REQUIRED CRIMP HEIGHT SETTING WILL CAUSE DAMAGE TO CRIMP TOOLING.



SET UP GAGE 458637-3		LOC A	DIST 66	REVISIONS			
REV	DATE	BY	CHKD	DESCRIPTION	DATE	OWN	APPV
A	20MAY2009			RELEASED	20MAY2009	RK	TE

REV	QTY	UNIT	DESCRIPTION	ITEM NO
-	2	2	1655785-9 SCR, BTN SKT HD CAP (M3 X 6)	235
-	1	1	1976053-2 LOCATER BLOCK, TERMINAL	179
-	1	1	993111-8 PIN, SLOTTED SPRING 3.0 X 12.0	177
-	2	2	3-22280-7 SPRING, COMPRESSION	176
-	1	1	1752353-1 GUIDE PIN, HOLDDOWN	175
-	1	1	1901680-1 GUIDE PIN, HOLDDOWN	174
-	1	1	1338705-3 DOCUMENTATION PACKAGE	71
-	1	1	461264-5 PLATE, IDENTIFICATION	67
-	2	2	21017-2 SCREW, DRIVE	66
-	1	1	3-18031-0 SCR, SET, CUP POINT M6 X 6.0	63
-	2	2	2-18032-5 SCR, SET, FLT POINT M5 X 20.0	61
-	1	1	18024-7 SCR, BTN SKT HD CAP (M4 X 10.0)	60
-	1	1	5-18022-2 SCR, HEX HD CAP M4 X 8.0	59
-	1	1	1338685-1 PAWL, FEED	56
-	4	4	18024-8 SCR, BTN SKT HD CAP (M4 X 12.0)	54
-	1	1	1-18030-0 NUT, HEX, REG M3.5	52
-	1	1	1-1901681-0 HOLDDOWN, TERMINAL	51
-	1	1	2-1752354-5 STANDOFF, HOLD-DOWN	50
-	1	1	18024-3 SCR, BTN SKT HD CAP (M3 X 10.0)	49
-	1	1	1338675-1 CAM, UNIVERSAL PRE FEED	48
-	1	1	1338676-1 CAM, UNIVERSAL POST-FEED	47
-	1	1	1320999-3 APPLICATOR SUBASSEMBLY, HDI	46
-	1	1	690191-1 PLUG, NYLON	45
-	1	1	1633724-1 RAM, (SIDE FEED)	44
-	1	1	2-18024-6 SCR, BTN SKT HD CAP (M8 X 25.0)	41
-	1	1	690125-1 SHIM SUB-ASSY	39
-	1	1	469367-1 SHIM	38
-	1	1	879103-2 FINE ADJUST HEAD ASSEMBLY	37
-	1	1	2-1752356-2 SUPPORT, TERMINAL	34
-	2	2	1-18024-0 SCR, BTN SKT HD CAP (M4 X 20.0)	33
-	1	1	18027-2 WASHER, FLAT, REG M4	32
-	1	1	1-18023-2 SCR, SKT HD CAP M4 X 12.0	31
-	1	1	1320908-1 SPACER, STRIP GUIDE	30
-	1	1	1633073-1 STRIP GUIDE ASSEMBLY	29
-	1	1	1-455888-0 SPACER, CRIMPER	28
-	2	2	1-22284-0 SPRING, COMPRESSION	27
-	1	1	356835-1 LEVER, DRAG RELEASE	26
-	1	1	240792-1 DRAG, TERMINAL	25
-	1	1	1320928-3 PLATE, STRIP GUIDE	24
-	1	1	980371-4 SCR, SKT HD SHLDR 5.0 DIA X 6.0	23
-	1	1	690472-2 STRIPPER	22
-	1	1	1-18023-1 SCR, SKT HD CAP M4 X 10.0	21
-	2	2	18025-2 WASHER, SPRG LOCK, REG M4	20
-	1	1	690472-1 STRIPPER	19
-	1	1	1338684-1 SHEAR HOLDER, FRONT	13
-	1	1	3-22280-3 SPRING, COMPRESSION	12
-	1	1	356885-4 STOP, SHEAR	11
-	1	1	1320921-1 SHEAR HOLDER, FRONT, CUT	10
-	1	1	454276-1 FLOATING SHEAR, FRONT	9
1	2	2	6-1633131-7 ANVIL, COMBINATION .080	8
-	-	-	-	7
-	-	-	-	6
-	1	1	1-455889-4 DEPRESSOR, SHEAR	5
-	1	1	2-238011-2 BLOCK, CRIMPER SPACER	4
1	2	2	7-1424909-1 CRIMPER, INSULATION F	3
-	1	1	455888-5 SPACER, CRIMPER	2
1	2	2	1-456405-7 CRIMPER, WIRE PREMIUM	1

REV	QTY	UNIT	DESCRIPTION	ITEM NO					
-77	-76	-72	-71	-6	-2	-1	PART NO	DESCRIPTION	ITEM NO

DATE	16APR2009	BY	T. ELBIN	CHKD	T. ELBIN
DATE	20MAY2009	BY	N. DEMING	CHKD	N. DEMING

PRODUCT SPEC: FINE ADJUST SIDE FEED HDI APPLICATOR

SCALE: 3:5 SHEET 1 OF 1 REV A