

PART NUMBER	REV	TERMINATOR	FEED TYPE	DESCRIPTION
1529234-1	A	BENCH & LEADMAKER	MECH POST FEED	HDI APPLICATOR
7-1529234-1	A	BENCH & LEADMAKER	MECH POST FEED	-1 AND SPARE PARTS
7-1529234-7	A	-	-	SPARE PARTS KIT

LOC	DIST	REV	DATE	BY	APPD
A	66	A	20MAR2007	DP	MC

CRIMP DATA TYCO TERMINAL TYCO CRIMP SPECS

TERMINAL NAME: .187 SRS POSITIVE LOCK RECEIPT

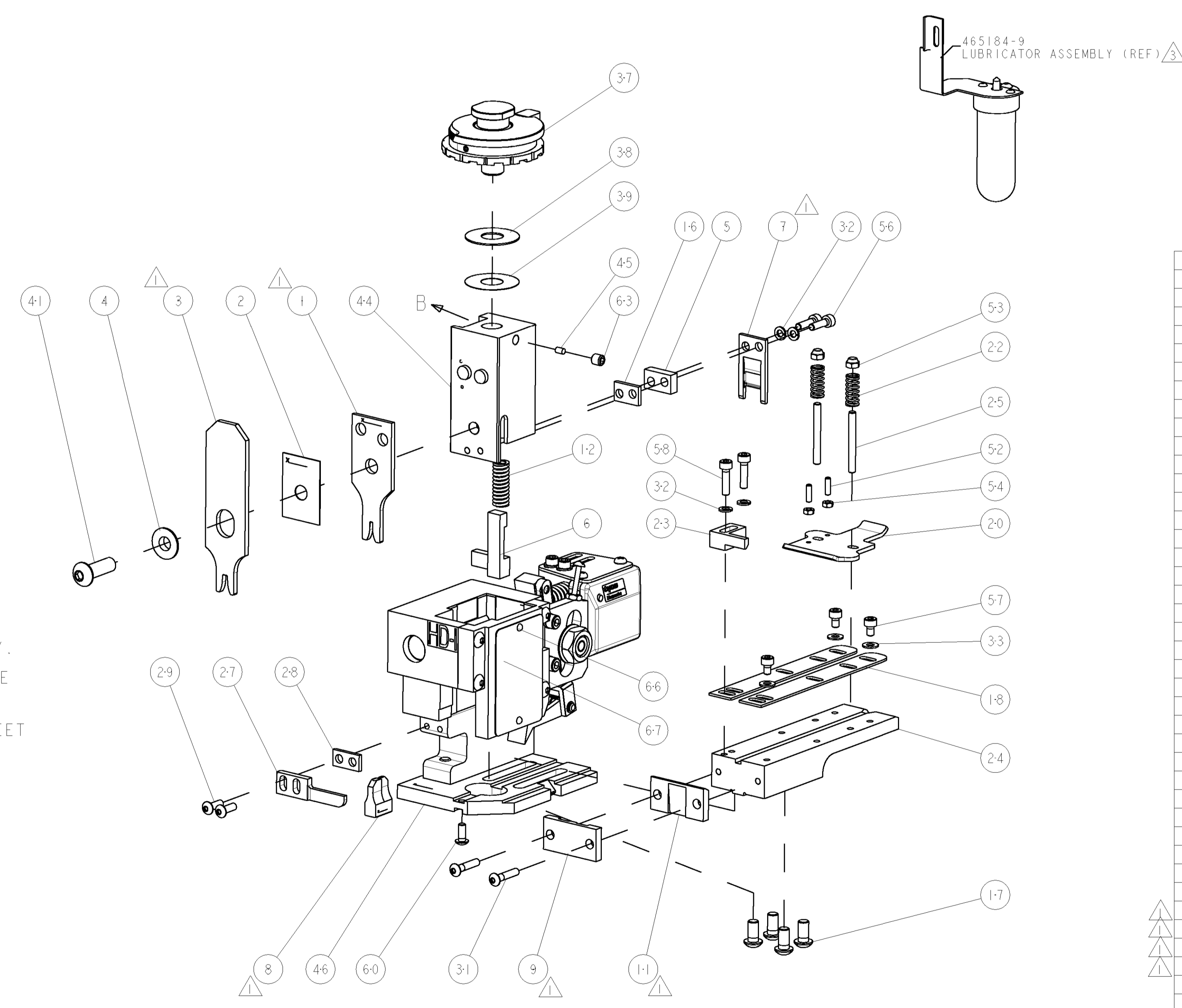
CRIMP	SIZE	TYPE	RANGE
WIRE	1.78 [.070 IN]	F	24-20 AWG
INSUL	3.56 [.140 IN]	F	1.52-2.79 [.060-.110 IN]

WIRE STRIP LENGTH 3.68-4.45 [.145-.175 IN] APPL INSTRUCTIONS 408-8323 & 408-8490

TERMINAL 114-2074 FEED 20.70 [.815 IN]  
 APPL SPEC -

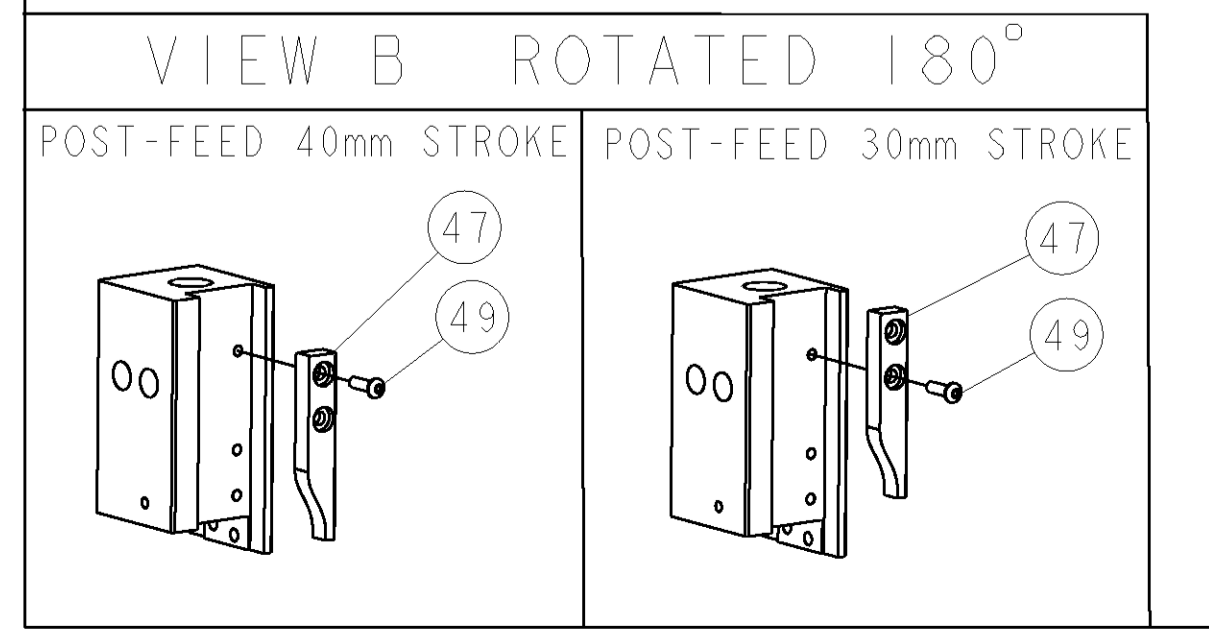
TERMINALS APPLIED

WIRE SIZE	CRIMP HEIGHT	REF SETTING
20 AWG	1.04 ±0.05 [.041 ±.002 IN]	C4
22 AWG	0.97 ±0.05 [.038 ±.002 IN]	D0
24 AWG	0.89 ±0.05 [.035 ±.002 IN]	D6



- RECOMMENDED SPARE PARTS
- GREASE RAM, CAM, CAM FOLLOWER AND FEED ROD LIGHTLY.
- CERTAIN TERMINALS REQUIRE LUBRICATION. REFER TO THE APPLICATOR INSTRUCTION SHEET FOR MORE INFORMATION.
- LUBRICATE DAILY PER THE APPLICATOR INSTRUCTION SHEET SUPPLIED WITH THE APPLICATOR.

**\* WARNING**  
 ON INSTALLATION, SET WIRE DISC TO LARGEST WIRE SIZE SETTING. USE OF SETTINGS BELOW MIN. REQUIRED CRIMP HEIGHT SETTING WILL CAUSE DAMAGE TO CRIMP TOOLING.



-	1	1	1338705-4	DOCUMENTATION PACKAGE	71
-	1	1	461264-5	PLATE, IDENTIFICATION	67
-	2	2	21017-2	SCREW, DRIVE	66
-	1	1	3-18031-0	SCR, SET, CUP POINT M6 X 6.0	63
-	1	1	18024-7	SCR, BTN SKT HD CAP (M4 X 10.0)	60
-	2	2	1-18023-3	SCR, SKT HD CAP M4 X 16.0	58
-	3	3	18023-9	SCR, SKT HD CAP M4 X 6.0	57
-	2	2	9-18023-6	SCR, SKT HD CAP M4 X 14.0	56
-	2	2	18029-1	NUT, HEX, REG M3	54
-	2	2	986965-1	NUT, LOCK, HEX, TORQUE (M4)	53
-	2	2	2-18032-2	SCR, SET, FLT POINT M3 X 10.0	52
-	1	1	18024-3	SCR, BTN SKT HD CAP (M3 X 10.0)	49
-	1	1	1338676-1	CAM, UNIVERSAL POST-FEED	47
-	1	1	1338662-1	SUB ASSY, APPLICATOR FRAME	46
-	1	1	690191-1	PLUG, NYLON	45
-	1	1	1320998-1	RAM	44
-	1	1	2-18024-6	SCR, BTN SKT HD CAP (M8 X 25.0)	41
-	1	1	690125-1	SHIM SUB-ASSY	39
-	1	1	469367-8	SHIM	38
-	1	1	879103-3	FINE ADJUST HEAD ASSEMBLY	37
-	3	3	18027-2	WASHER, FLAT, REG M4	33
-	4	4	18025-2	WASHER, SPRG LOCK, REG M4	32
-	2	2	1-18024-0	SCR, BTN SKT HD CAP (M4 X 20.0)	31
-	2	2	18024-8	SCR, BTN SKT HD CAP (M4 X 12.0)	29
-	1	1	1-690451-1	SPACER, STRIPPER	28
-	1	1	240639-1	STRIPPER (MACHINING)	27
-	2	2	1320906-1	STUD, THREADED	25
-	1	1	2-1320995-2	PLATE, STRIP GUIDE	24
-	1	1	240825-2	PLATE, STRIP HOLD DOWN	23
-	2	2	4-22281-1	SPRING, DRAG	22
-	1	1	1338665-1	DRAG	20
-	2	2	1338663-2	GUIDE, LOWER STRIP	18
-	4	4	1-18024-8	SCR, BTN SKT HD CAP (M6 X 12.0)	17
-	1	1	1338708-1	SPACER, SLUG BLADE	16
-	1	1	23846-1	SPRING, DIE	12
-	1	1	240833-1	PLATE, REAR SHEAR	11
-	1	1	690482-5	PLATE, FRONT SHEAR	9
-	1	2	1333215-2	ANVIL, COMBINATION	8
-	1	1	690474-5	BLADE, SLUG	7
-	1	1	5-455892-0	HOLD DOWN, TERMINAL	6
-	1	1	1-240641-4	SPACER	5
-	1	1	238009-1	BLOCK, FL CRIMPER SPACER	4
-	1	2	8-456134-0	CRIMPER, INSULATION F PREMIUM	3
-	1	1	455888-4	SPACER, CRIMPER	2
-	1	2	3-456404-0	CRIMPER, WIRE PREMIUM	1

TYCO ELECTRONICS CORPORATION, 17105-3608 HARRISBURG, PA 17105-3608

DATE: 21FEB2007  
 DRAWN: L LOFTHOUSE  
 APPD: M CLIFFORD

PRODUCT SPEC: FINE ADJUST END FEED HDI APPLICATOR

APPLICATION SPEC: -

SIZE: A1 | CAGE CODE: 00779 | DRAWING NO: 1529234

SCALE: 3:5 | SHEET: 1 OF 1 | REV: A

CUSTOMER DRAWING