

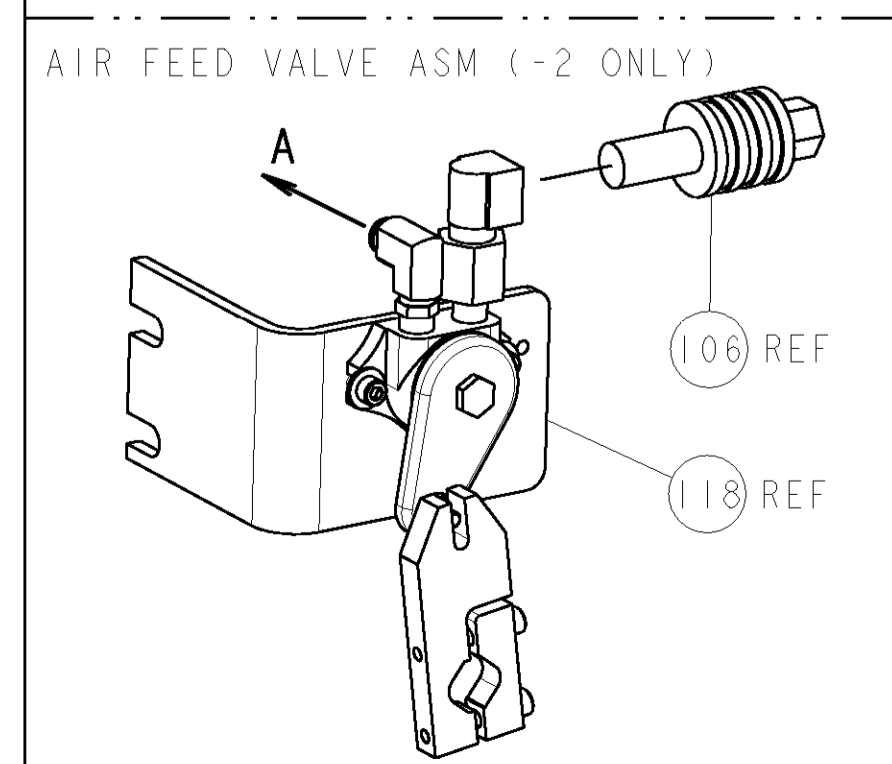
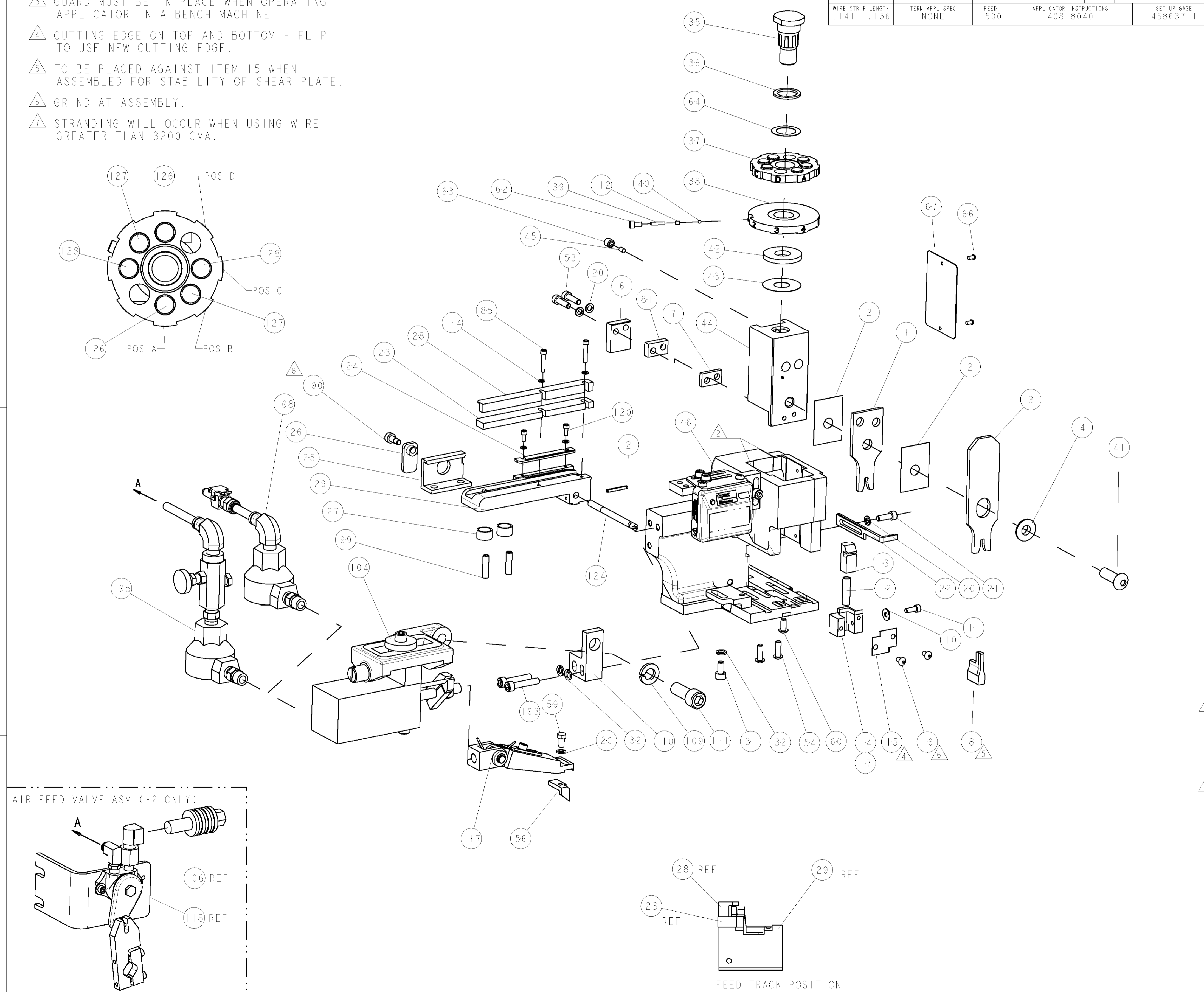
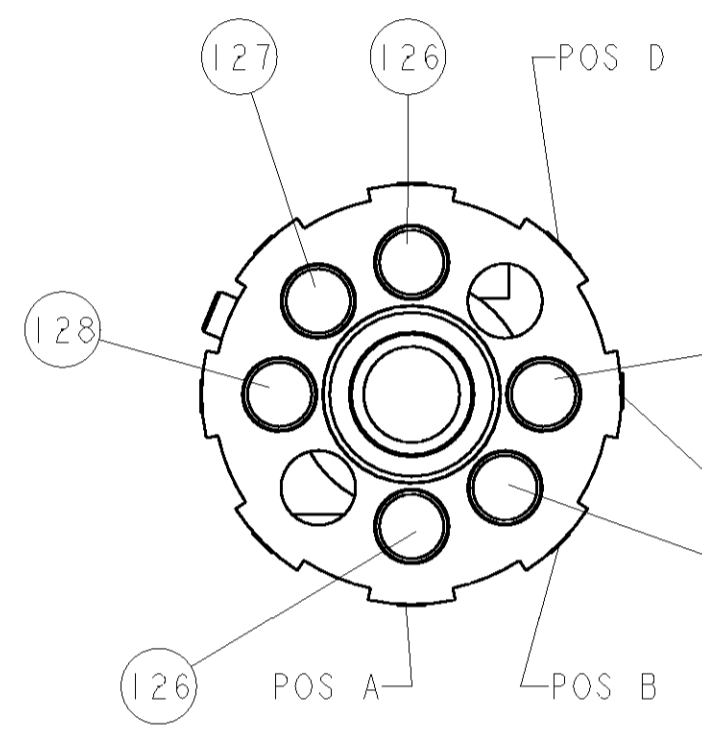
PART NUMBER	REV	FIRST USED	POWER UNIT	FEED TYPE	DESCRIPTION
1852402-1	A	122500-1	LEADMAKER	AIR FEED	CUTS CARRIER
1852402-2	A	565435-5	BENCH MODEL K	AIR FEED	CUTS CARRIER
1852402-3	A	354500-1	BENCH MODEL G	AIR FEED	CUTS CARRIER
1852402-6	A	122500-1	LEADMAKER	AIR FEED	CONTINUOUS CARRIER
7-1852402-7	A	-	-	-	SPARE PARTS



TERMINAL NAME: TERMINAL		SKIL CORP TERMINAL - AMP CRIMP SPECS	
TYCO PN	SKIL CORP PN	CRIMP HEIGHT	WIRE SIZE
1949238-1	2610341393	-	-
-	-	A .071±.002[1.80±0.05mm]	14AWG Δ
-	-	B .063±.002[1.60±0.05mm]	16AWG
-	-	C .058±.002[1.47±0.05mm]	18AWG
-	-	D -	-
CRIMP	SIZE	TYPE	RANGE
-	-	WIRE .115 [2.92mm]	F 14-16 AWG
-	-	INSUL .130 [3.30mm]	F ϕ .120 MAX
WIRE STRIP LENGTH .141 - .156	TERM APPL SPEC NONE	FEED .500	APPLICATOR INSTRUCTIONS 408-8040
			SET UP GAGE 458637-1

LOC	DIST	REV	DESCRIPTION	DATE	BY	APPD
A	66		RELEASED	9/07	BH	BH

- Δ RECOMMENDED SPARE PARTS
- Δ GREASE LIGHTLY
- Δ GUARD MUST BE IN PLACE WHEN OPERATING APPLICATOR IN A BENCH MACHINE
- Δ CUTTING EDGE ON TOP AND BOTTOM - FLIP TO USE NEW CUTTING EDGE.
- Δ TO BE PLACED AGAINST ITEM 15 WHEN ASSEMBLED FOR STABILITY OF SHEAR PLATE.
- Δ GRIND AT ASSEMBLY.
- Δ STRANDING WILL OCCUR WHEN USING WIRE GREATER THAN 3200 CMA.



QTY	REV	DESCRIPTION	DATE	BY	APPD			
-	2	2	2	2	-	9-354778-0	PIN, WIRE DISC, .2945	128
-	2	2	2	2	-	7-354778-9	PIN, WIRE DISC, .2890	127
-	2	2	2	2	-	6-354778-1	PIN, WIRE DISC, .2800	126
-	1	1	1	1	-	690432-3	ADJUSTMENT SCREW	124
-	1	1	1	1	-	4-21028-0	PIN, SLOTTED SPRING .094 X .750	121
-	2	2	2	2	-	1-21000-3	SCR, SKT HD CAP 4-40 X .250	120
-	-	-	REF	-	-	692655-6	AIR FEED VALVE ASSEMBLY	118
-	1	1	1	1	-	461062-1	FEED FINGER ASSEMBLY	117
-	-	-	REF	-	-	455749-1	GUARD WINDOW	116
-	-	-	REF	-	-	679532-1	INSERT, GUARD	115
-	4	4	4	4	-	21024-2	WASHER, SPRG LOCK, REG NO 4	114
-	1	1	1	1	-	690603-1	SPRING ASSIST AMP-O-MATOR APPLICATOR	111
-	1	1	1	1	-	3-21001-5	SCR, SKT HD CAP 3/8-16 X 1.000	111
-	1	1	1	1	-	459610-1	MOUNT, FEED BRACKET	110
-	1	1	1	1	-	21024-8	WASHER, SPRG LOCK, REG 3/8	109
-	1	1	1	1	-	692655-7	AIR FEED VALVE ASSEMBLY	108
-	-	-	REF	-	-	24024-2	VALVE, SHUT OFF	106
-	-	-	1	-	-	692655-5	AIR FEED VALVE ASSEMBLY	105
-	1	1	1	1	-	461065-1	ASSEMBLY, AIR FEED	104
-	2	2	2	2	-	3-21000-9	SCR, SKT HD CAP 10-32 X 1.000	103
-	1	1	1	1	-	22353-8	SCR, SHLD, SLOT HD, 3/16 DIA	100
-	2	2	2	2	-	5-21006-6	SCR, SET, CUP POINT 10-32 X .750	99
-	2	2	2	2	-	1-21000-6	SCR, SKT HD CAP 4-40 X .625	85
-	1	1	1	1	-	2-240641-9	SPACER	81
-	1	1	1	1	-	4088040	SF APPL INST 408-8040	72
-	1	1	1	1	-	217238-1	GENERAL INSTRUCTION PKG	71
-	1	1	1	1	-	461264-1	PLATE, IDENTIFICATION	67
-	2	2	2	2	-	21017-2	SCREW, DRIVE	66
-	1	1	1	1	-	986950-1	WASHER, FLAT PRECISION	64
-	1	1	1	1	-	21009-2	SCR, SET, SELF LOCKING 1/4-20 X .250	63
-	1	1	1	1	-	23030-1	SCR, SKT HD CAP 6-32 X .25	62
-	1	1	1	1	-	22733-8	SCR, BHSC, SELF-LOCKING, 8-32 X .375	60
-	1	1	1	1	-	2-22603-0	SCR, HEX HD CAP 8-32 X .312	59
-	1	1	1	1	-	4-694433-8	FEED PAWL	56
-	2	2	2	2	-	2-21002-2	SCR, BTN SKT HD CAP 8-32 X .500	54
-	2	2	2	2	-	2-21000-8	SCR, SKT HD CAP 8-32 X .625	53
-	1	1	1	1	-	1633399-1	APPL., BASIC AIR FEED SUB ASSY	46
-	1	1	1	1	-	690191-1	PLUG, NYLON	45
-	1	1	1	1	-	455673-1	RAM, SIDE FEED	44
-	1	1	1	1	-	690125-1	SHIM SUB-ASSY	43
-	1	1	1	1	-	690124-4	WASHER, RAM (.135)	42
-	1	1	1	1	-	7-21002-9	SCR, BTN SKT HD CAP 5/16-24 X 1.00	41
-	1	1	1	1	-	23241-6	BALL, STEEL	40
-	1	1	1	1	-	690170-1	SPRING, COMPRESSION	39
-	1	1	1	1	-	690142-1	DISC, INSULATION	38
-	1	1	1	1	-	354777-1	WIRE DISC, ASSEMBLY	37
-	1	1	1	1	-	22480-5	SPRING, COMPRESSION	36
-	1	1	1	1	-	690212-1	POST, RAM	35
-	3	3	3	3	-	21024-5	WASHER, SPRG LOCK, REG NO 10	32
-	1	1	1	1	-	3-21000-4	SCR, SKT HD CAP 10-32 X .375	31
-	1	1	1	1	-	3-844048-2	PLATE, REAR STRIP GUIDE	29
-	1	1	1	1	-	2-189124-7	GUIDE, FRONT STRIP	28
-	2	2	2	2	-	1-22284-0	SPRING, COMPRESSION	27
-	1	1	1	1	-	240793-1	LEVER, DRAG RELEASE	26
-	1	1	1	1	-	240792-1	DRAG, TERMINAL	25
-	1	1	1	1	-	690438-1	FRONT STRIP GUIDE	24
-	1	1	1	1	-	2-189124-6	GUIDE, FRONT STRIP	23
-	1	1	1	1	-	690472-2	STRIPPER	22
-	1	1	1	1	-	2-21000-7	SCR, SKT HD CAP 8-32 X .500	21
-	4	4	4	4	-	21024-4	WASHER, SPRG LOCK, REG NO 8	20
-	1	-	-	-	-	681023-2	SHEAR HOLDER, REAR	17
-	2	2	2	2	-	1-21002-6	SCR, BTN SKT HD CAP 6-32 X .250	16
-	1	1	1	1	-	1633533-1	SHEAR PLATE	15
-	-	1	1	1	-	1-690462-4	SHEAR HOLDER, REAR	14
-	1	1	1	1	-	690463-1	FLOATING SHEAR, REAR	13
-	1	1	1	1	-	3-22280-3	SPRING, COMPRESSION	12
-	1	1	1	1	-	1-21000-9	SCR, SKT HD CAP 6-32 X .375	11
-	1	1	1	1	-	21055-5	WASHER, FLAT, REG NO 6	10
1	1	1	1	1	-	1-853224-0	ANVIL, COMBINATION	8
-	1	1	1	1	-	240641-5	SPACER	7
-	1	1	1	1	-	690468-1	DEPRESSOR SHEAR, REAR	6
-	1	1	1	1	-	238009-1	BLOCK, FL CRIMPER SPACER	4
1	1	1	1	1	-	3-1633471-8	CRIMPER, INSULATION F	3
-	2	2	2	2	-	455888-3	SPACER, CRIMPER	2
1	1	1	1	1	-	5-1673600-3	CRIMPER, WIRE	1

QTY	REV	PART NO	DESCRIPTION	ITEM NO				
-77	-6	-3	-2	-1	U/M			

DIMENSIONS: INCHES		TOLERANCES UNLESS OTHERWISE SPECIFIED:	
0 PLC	±	1 PLC	±.01
1 PLC	±.01	2 PLC	±.01
3 PLC	±.001	4 PLC	±.001
4 PLC	±.001	ANGLES	±.0001
MATERIAL		FINISH	

APPROVED: B. HIGMAN	DATE: 07FEB2007	Tyco Electronics Harrisburg, PA 17105-3608
APPROVED: J. ELBIN	DATE: 07FEB2007	
PRODUCT SPEC		NAME: SIDE FEED HDM APPLICATOR
APPLICATION SPEC		SIZE: CAGE CODE: DRAWING NO: A1 00779
WEIGHT		SCALE: 3:5
CUSTOMER DRAWING		SHEET 1 OF 1 REV A

CUSTOMER VIEWABLE ASSEMBLY

Mouser Electronics

Authorized Distributor

Click to View Pricing, Inventory, Delivery & Lifecycle Information:

[TE Connectivity:](#)

[1852402-2](#)