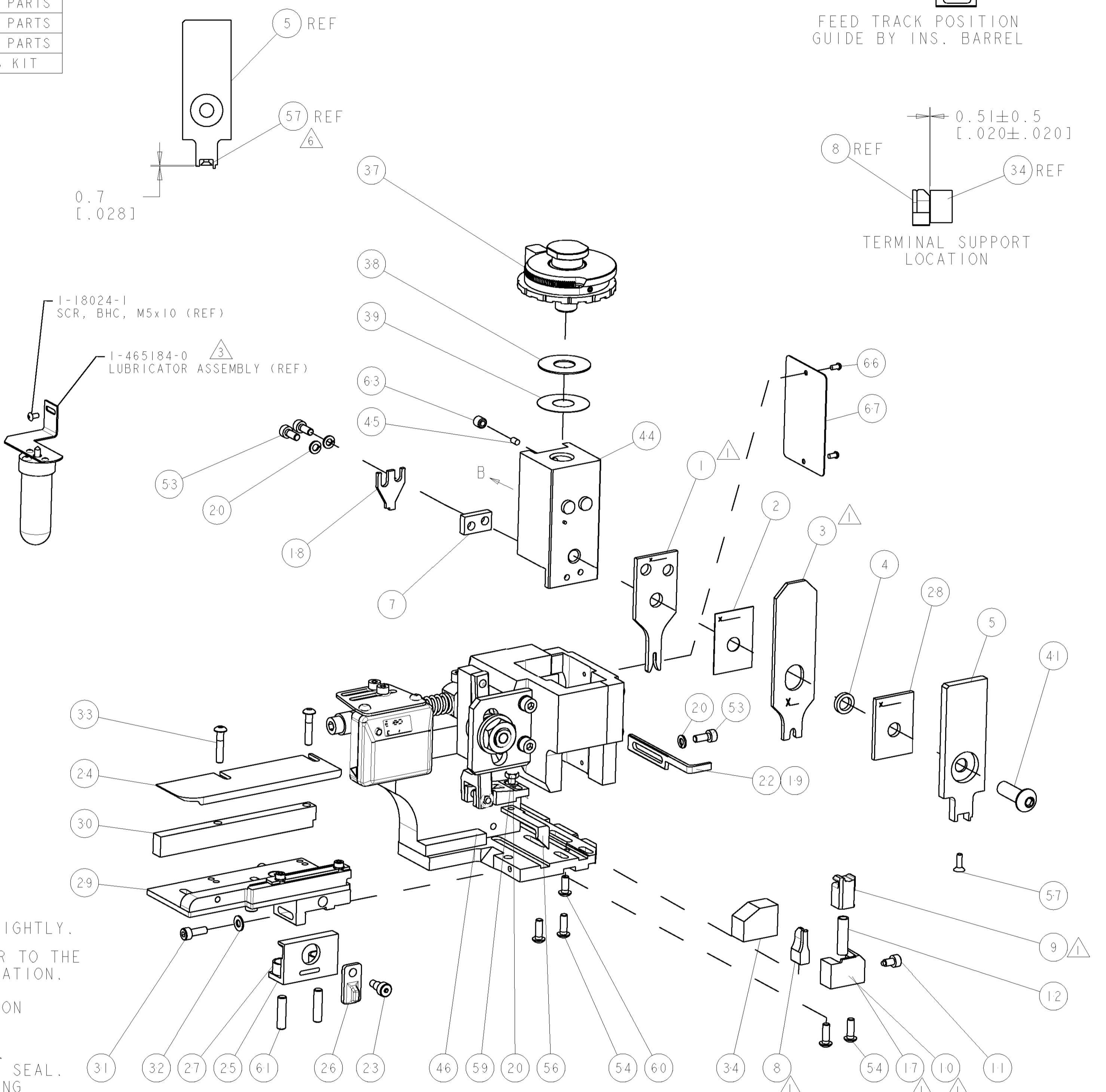


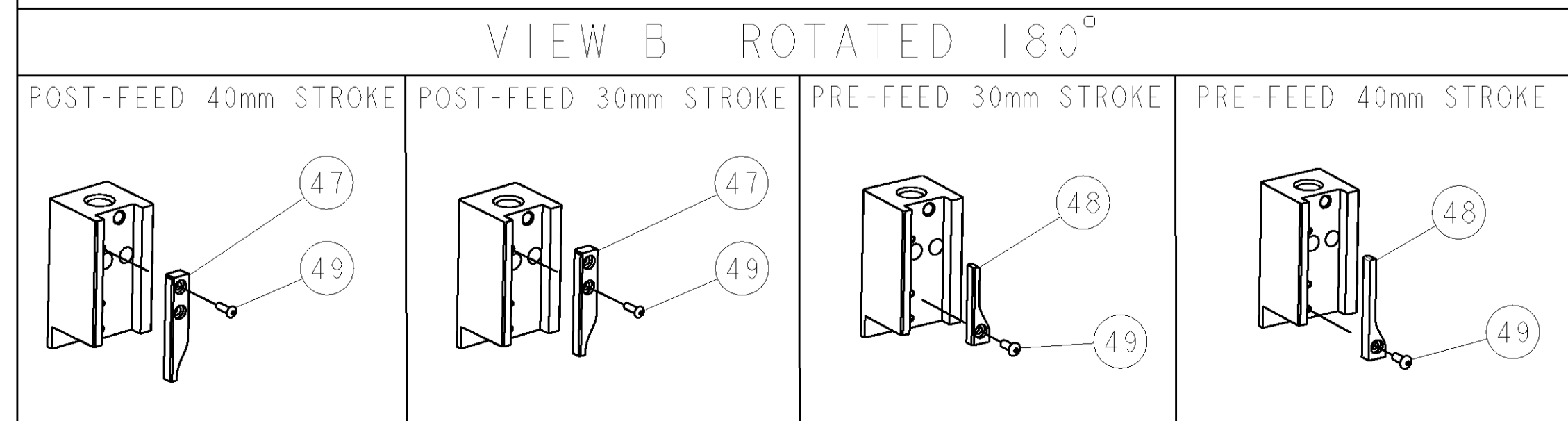
PART NUMBER	REV	TERMINATOR	FEED TYPE	DESCRIPTION
1528750-1	A	LEADMAKER	MECH POST FEED	CUTS CARRIER
1528750-2	A	BENCH	MECH PRE FEED	CUTS CARRIER
1528750-6	A	LEADMAKER	MECH POST FEED	CONTINUOUS CARRIER
7-1528750-1	A	LEADMAKER	MECH POST FEED	-1 AND SPARE PARTS
7-1528750-2	A	BENCH	MECH PRE FEED	-2 AND SPARE PARTS
7-1528750-6	A	LEADMAKER	MECH POST FEED	-6 AND SPARE PARTS
7-1528750-7	A	-	-	SPARE PARTS KIT

CRIMP DATA	TYCO TERMINAL	TYCO CRIMP SPECS
TERMINAL NAME: CRIMP CONTACT ELO		
CRIMP	SIZE	TYPE
WIRE	1.40 [1.055 IN]	F
INSUL	3.05 [1.120 IN]	O
WIRE STRIP LENGTH		APPL INSTRUCTIONS
3.70-3.90 [1.146-1.154 IN]		408-8322 & 408-8490
TERMINAL APPL SPEC	114-18432	FEED 10.16 [1.400 IN]
TERMINALS APPLIED		
TERM PN	SEAL PN	
1411554	1393457-1	
1411556	1393457-2	
1411572	-	
1411578	-	
WIRE SIZE	CRIMP HEIGHT	REF SETTING
0.50mm <sup>2</sup>	1.00 ± 0.03 [1.039 ± 0.001 IN]	B3
0.35mm <sup>2</sup>	0.92 ± 0.03 [1.036 ± 0.001 IN]	B9

- △ RECOMMENDED SPARE PARTS.
- 2. GREASE RAM, CAM, CAM FOLLOWER AND FEED ROD LIGHTLY.
- △ CERTAIN TERMINALS REQUIRE LUBRICATION. REFER TO THE APPLICATOR INSTRUCTION SHEET FOR MORE INFORMATION.
- 4. LUBRICATE DAILY PER THE APPLICATOR INSTRUCTION SHEET SUPPLIED WITH THE APPLICATOR.
- △ THIS APPLICATOR APPLIES TERMINAL WITH A SEAL. INSULATION DIA QUOTED IS OUTSIDE DIAMETER OF SEAL. WIRE INSULATION DIA IS DEPENDENT ON SEAL BEING APPLIED. SEE CUSTOMER DRAWINGS FOR SEAL INSULATION RANGES AND FOR TERMINAL TO SEAL COMPATIBILITY.
- △ APPLY TORQ-SEAL IN ALLEN SOCKET TO FILL HOLE AFTER FLAT HD HAS BEEN ADJUSTED TO CORRECT HEIGHT AT QUALIFICATION. APPLY #1-23419-5 LOC-TITE TO THREADS.



**\* WARNING**  
ON INSTALLATION, SET WIRE DISC TO LARGEST WIRE SIZE SETTING. USE OF SETTINGS BELOW MIN. REQUIRED CRIMP HEIGHT SETTING WILL CAUSE DAMAGE TO CRIMP TOOLING.



77	76	72	71	6	2	1	PART NO	DESCRIPTION	ITEM NO
-	-	-	-	-	-	-	-	-	84
-	-	-	-	-	-	-	-	-	83
-	-	-	-	-	-	-	-	-	82
-	-	-	-	-	-	-	-	-	81
-	-	-	-	-	-	-	-	-	80
-	-	-	-	-	-	-	-	-	79
-	-	-	-	-	-	-	-	-	78
-	-	-	-	-	-	-	-	-	77
-	-	-	-	-	-	-	-	-	76
-	-	-	-	-	-	-	-	-	75
-	-	-	-	-	-	-	-	-	74

SET UP GAGE 458637-3

LOC	DIST	REV	DATE	BY	APPD
A	66		12FEB2007	DP	MC

REVISIONS		DATE	BY	APPD
1	SEE ECO-07-003391	12FEB2007	DP	MC

ITEM NO	DESCRIPTION	ITEM NO
73		
72		
71	DOCUMENTATION PACKAGE	
70		
69		
68		
67	PLATE, IDENTIFICATION	
66	SCREW, DRIVE	
65		
64		
63	SCR, SET, CUP POINT M6 X 6.0	
62		
61	SCR, SET, FLT POINT M5 X 20.0	
60	SCR, BTN SKT HD CAP (M4 X 10.0)	
59	SCR, HEX HD CAP M4 X 8.0	
58		
57	SCR, FLT SKT HD CAP M3 X 10.0	
56	PAWL, FEED	
55		
54	SCR, BTN SKT HD CAP (M4 X 12.0)	
53	SCR, SKT HD CAP M4 X 10.0	
52		
51		
50		
49	SCR, BTN SKT HD CAP (M3 X 10.0)	
48	CAM, UNIVERSAL PRE FEED	
47	CAM, UNIVERSAL POST-FEED	
46	APPLICATOR SUBASSEMBLY, HDI	
45	PLUG, NYLON	
44	RAM	
43		
42		
41	SCR, BTN SKT HD CAP (M8 X 25.0)	
40		
39	SHIM SUB-ASSY	
38	SHIM	
37	FINE ADJUST HEAD ASSEMBLY	
36		
35		
34	SUPPORT, TERMINAL	
33	SCR, BTN SKT HD CAP (M4 X 20.0)	
32	WASHER, FLAT, REG M4	
31	SCR, SKT HD CAP M4 X 12.0	
30	SPACER, STRIP GUIDE	
29	STRIP GUIDE ASSEMBLY	
28	SPACER, CRIMPER	
27	SPRING, COMPRESSION	
26	LEVER, DRAG RELEASE	
25	DRAG, TERMINAL	
24	PLATE, STRIP GUIDE	
23	SCR, SKT HD SHLDR 5.0 DIA X 6.0	
22	STRIPPER	
21	SCR, SKT HD CAP M4 X 10.0	
20	WASHER, SPRG LOCK, REG M4	
19	STRIPPER	
18	HOLD DOWN	
17	SHEAR HOLDER, FRONT	
16		
15		
14		
13		
12	SPRING, COMPRESSION	
11	STOP, SHEAR	
10	SHEAR HOLDER, FRONT, CUT	
9	FLOATING SHEAR, FRONT	
8	ANVIL, COMBINATION	
7	SPACER	
6		
5	DEPRESSOR, SHEAR	
4	BLOCK, CRIMPER SPACER	
3	CRIMPER, INSULATION	
2	SPACER, CRIMPER	
1	CRIMPER, WIRE PREMIUM	

ITEM NO	DESCRIPTION	ITEM NO
77		
76		
72		
71		
6		
2		
1		

DIMENSIONS: mm [IN]	TOLERANCES UNLESS OTHERWISE SPECIFIED: 0 PLC ± 1 PLC ± 2 PLC ± 3 PLC ± 4 PLC ± ANGLES ±	DWN TO JAN2007 ENR APVD M. CLIFFORD PRODUCT SPEC APPLICATION SPEC See Table WEIGHT CUSTOMER DRAWING	<b>tyco</b> Tyco Electronics Harrisburg, PA 17105-3608 <b>FINE ADJUST SIDE FEED HDI APPLICATOR</b> SIZE: 00779 C=1528750 SCALE: 3:5 SHEET 1 OF 1 REV A
------------------------	---	--	---