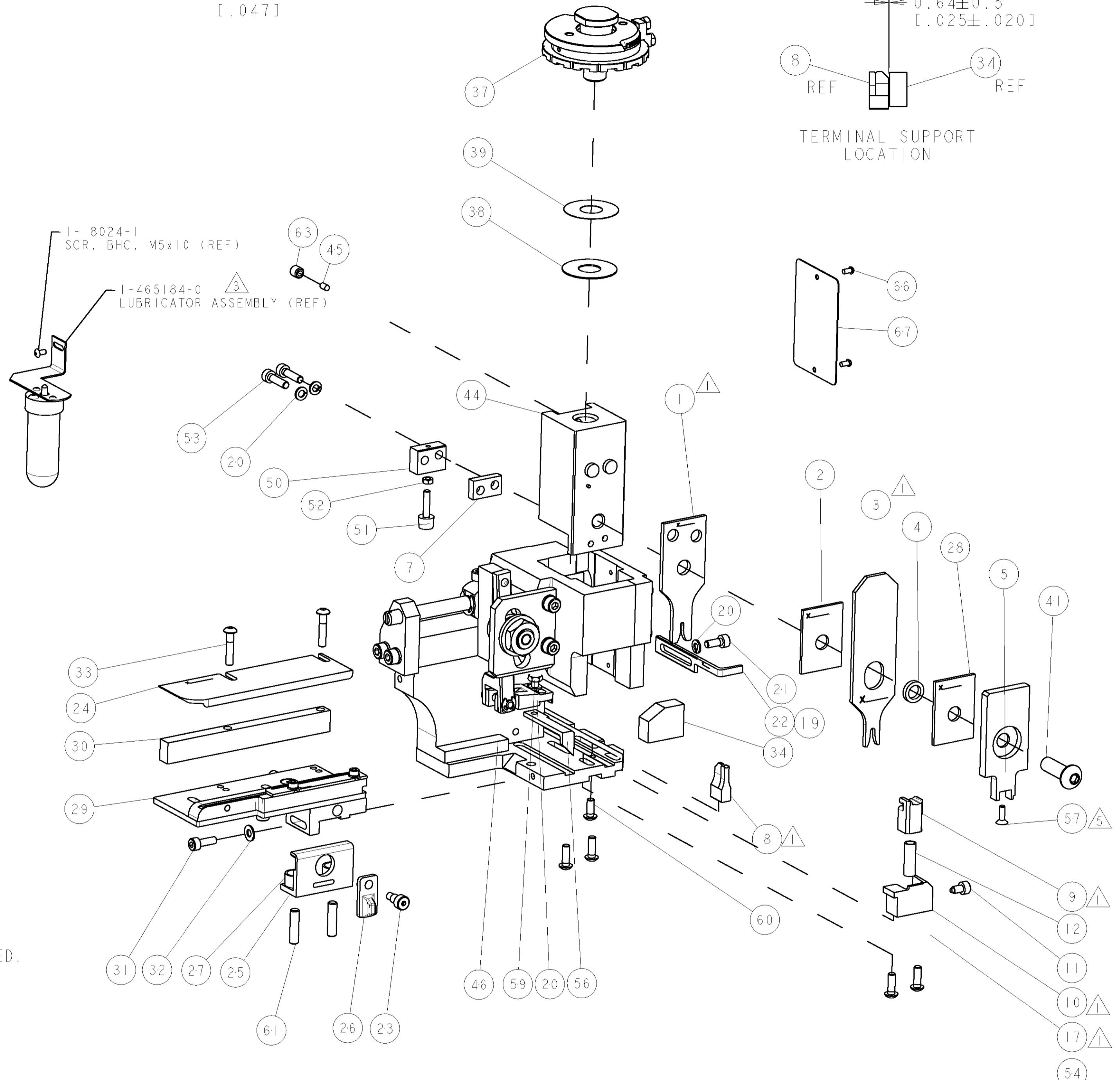
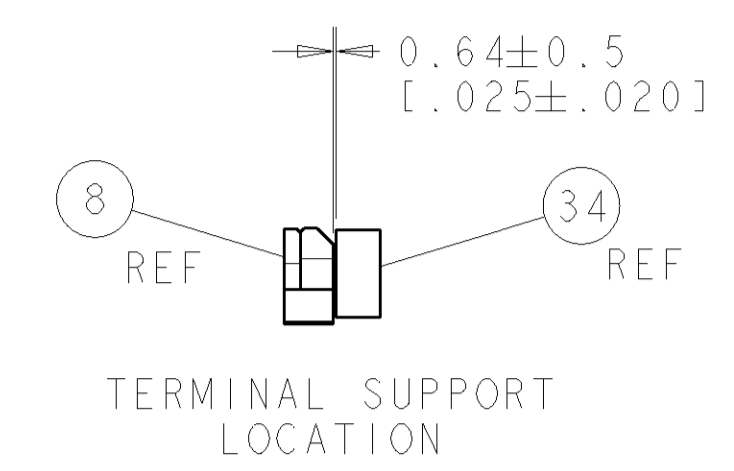
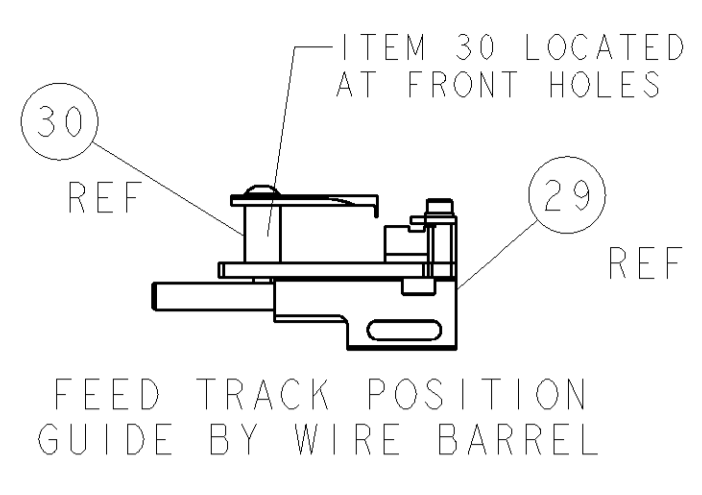
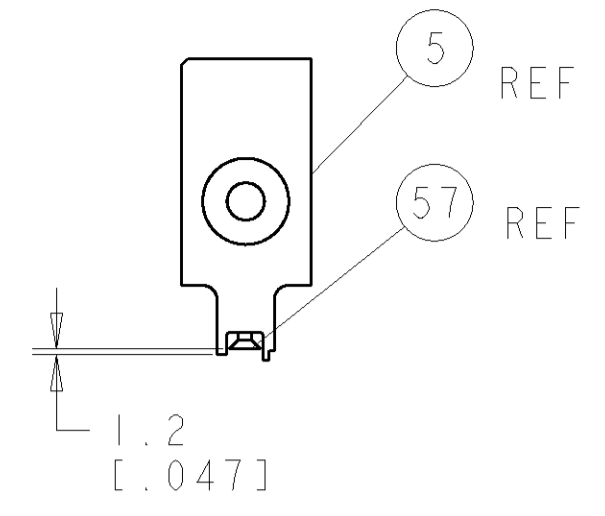
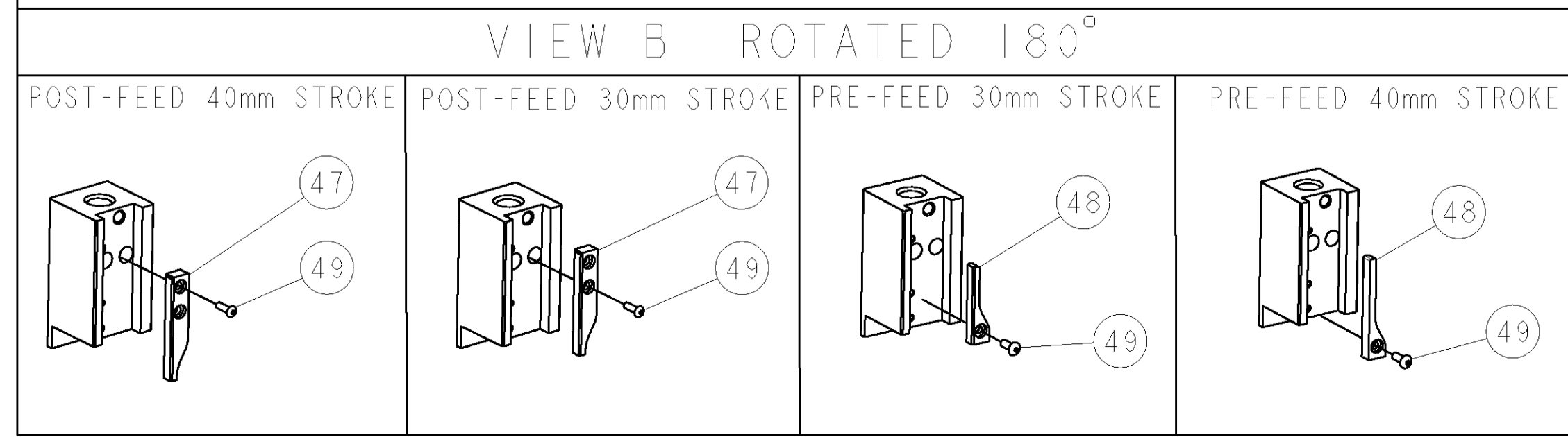


PART NUMBER	REV	TERMINATOR	FEED TYPE	DESCRIPTION
1528560-1	A	LEADMAKER	MECH POST FEED	CUTS CARRIER
1528560-2	A	BENCH	MECH PRE FEED	CUTS CARRIER
1528560-6	A	LEADMAKER	MECH POST FEED	CONTINUOUS CARRIER
7-1528560-1	A	LEADMAKER	MECH POST FEED	-1 AND SPARE PARTS
7-1528560-2	A	BENCH	MECH PRE FEED	-2 AND SPARE PARTS
7-1528560-6	A	LEADMAKER	MECH POST FEED	-6 AND SPARE PARTS
7-1528560-7	A	-	-	SPARE PARTS KIT

CRIMP DATA		KOSTAL TERMINAL		KOSTAL CRIMP SPEC	
TERMINAL NAME: MLK1.2 RECEPTACLE					
CRIMP	SIZE	TYPE	RANGE		
WIRE	1.57 [1.062 IN]	F 6	0.75-1.00mm ² or 20-16 AWG		
INSUL	3.05 [1.120 IN]	0 4	2.65Ø MAX		
WIRE STRIP LENGTH		APPL INSTRUCTIONS			
3.10-3.40 [1.222-1.34 IN]		408-8322 & 408-8490			
TERMINAL APPL SPEC	KOSTAL MLK 1.2	FEED		8.00 [3.15 IN]	
TERMINALS APPLIED					
TYCO PN	MFR TERM PN	TYCO SEAL PN	MFR SEAL PN		
1572750-1	2 21 24 61412 0	1572751-1	1 08 00 44452 1		
1572750-2	2 21 25 61412 0	-	-		
1572750-3	2 21 40 61412 0	-	-		
WIRE SIZE		CRIMP HEIGHT	REF SETTING		
1.00mm ²		1.20 ±0.05 [1.047 ±.002 IN]	B8		
0.75mm ²		1.10 ±0.05 [1.043 ±.002 IN]	C4		

- △ RECOMMENDED SPARE PARTS
- 2. GREASE RAM, CAM, CAM FOLLOWER AND FEED ROD LIGHTLY
- 3. LUBRICATE DAILY PER THE APPLICATOR INSTRUCTION SHEET SUPPLIED WITH THE APPLICATOR
- △ THIS APPLICATOR APPLIES TERMINAL WITH A SEAL. INSULATION DIA QUOTED IS OUTSIDE DIAMETER OF SEAL. WIRE INSULATION DIA IS DEPENDENT ON SEAL BEING APPLIED.
- △ APPLY TORO-SEAL IN ALLEN SOCKET TO FILL HOLE AFTER FLAT HD HAS BEEN ADJUSTED TO CORRECT HEIGHT AT QUALIFICATION. APPLY #1-23419-5 LOC-TITE TO THREADS.
- △ WIRE CRIMP DATA SUPPLIED BY TERMINAL MANUFACTURER, NOT RECOMMENDED BY TYCO ELECTRONICS UK LTD.
- △ INSULATION CRIMP DATA SUPPLIED BY TERMINAL MANUFACTURER.

* WARNING
ON INSTALLATION, SET WIRE DISC TO LARGEST WIRE SIZE SETTING. USE OF SETTINGS BELOW MIN. REQUIRED CRIMP HEIGHT SETTING WILL CAUSE DAMAGE TO CRIMP TOOLING.



SET UP GAGE 458637-3

LOC	DIST	REV	DATE	BY	APPD
A	66		04AUG2005	LJL	FB

REV	DATE	DESCRIPTION	ITEM NO
-	-	-	73
-	-	-	72
-	-	-	71
-	-	-	70
-	-	-	69
-	-	-	68
-	-	-	67
-	-	-	66
-	-	-	65
-	-	-	64
-	-	-	63
-	-	-	62
-	-	-	61
-	-	-	60
-	-	-	59
-	-	-	58
-	-	-	57
-	-	-	56
-	-	-	55
-	-	-	54
-	-	-	53
-	-	-	52
-	-	-	51
-	-	-	50
-	-	-	49
-	-	-	48
-	-	-	47
-	-	-	46
-	-	-	45
-	-	-	44
-	-	-	43
-	-	-	42
-	-	-	41
-	-	-	40
-	-	-	39
-	-	-	38
-	-	-	37
-	-	-	36
-	-	-	35
-	-	-	34
-	-	-	33
-	-	-	32
-	-	-	31
-	-	-	30
-	-	-	29
-	-	-	28
-	-	-	27
-	-	-	26
-	-	-	25
-	-	-	24
-	-	-	23
-	-	-	22
-	-	-	21
-	-	-	20
-	-	-	19
-	-	-	18
-	-	-	17
-	-	-	16
-	-	-	15
-	-	-	14
-	-	-	13
-	-	-	12
-	-	-	11
-	-	-	10
-	-	-	9
-	-	-	8
-	-	-	7
-	-	-	6
-	-	-	5
-	-	-	4
-	-	-	3
-	-	-	2
-	-	-	1
-	-	-	77
-	-	-	76
-	-	-	72
-	-	-	71
-	-	-	6
-	-	-	2
-	-	-	1

REV	DATE	DESCRIPTION	ITEM NO
-	-	-	83
-	-	-	82
-	-	-	81
-	-	-	80
-	-	-	79
-	-	-	78
-	-	-	77
-	-	-	76
-	-	-	75
-	-	-	74
-	-	-	73
-	-	-	72
-	-	-	71
-	-	-	6
-	-	-	2
-	-	-	1

DIMENSIONS: mm [IN]	TOLERANCES UNLESS OTHERWISE SPECIFIED: 0 PLC ± 1 PLC ± 2 PLC ± 3 PLC ± 4 PLC ± ANGLES ±	DWG: M. CLIFFORD ENH: APVD: E. BACKHURST PRODUCT SPEC: APPLICATION SPEC: See Table WEIGHT: CUSTOMER DRAWING:	Tyco Electronics Harrisburg, PA 17105-3608 FINE ADJUST SIDE FEED HDI APPLICATOR SIZE: CAGE CODE: DRAWING NO: RESTRICTED TO: A1 00779 C-1528560 SCALE: 3:5 SHEET 1 OF 1 REV A
------------------------	---	---	---