

4

3

2

1

THIS DRAWING IS UNPUBLISHED.

RELEASED FOR PUBLICATION

© COPYRIGHT

ALL RIGHTS RESERVED.

LOC

DIST


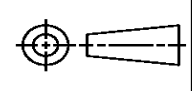
REVISIONS


P	LTR	DESCRIPTION	DATE	DWN	APVD
	B1	ECR-16-009822	13JUL2016	GK	SD

REPLACED BY OCEAN STYLE APPLICATOR PART
NUMBER 2150551-1

FOR REPLACEMENT PARTS FOR APPLICATOR 1339645
REFER TO ADDITIONAL PAGE(S). SPARE PARTS KIT (IF LISTED)
WILL REMAIN AVAILABLE.


THE REPLACEMENT OCEAN STYLE APPLICATOR HAS THE
SAME TERMINATOR/PRESS INTERFACE AS APPLICATOR
1339645

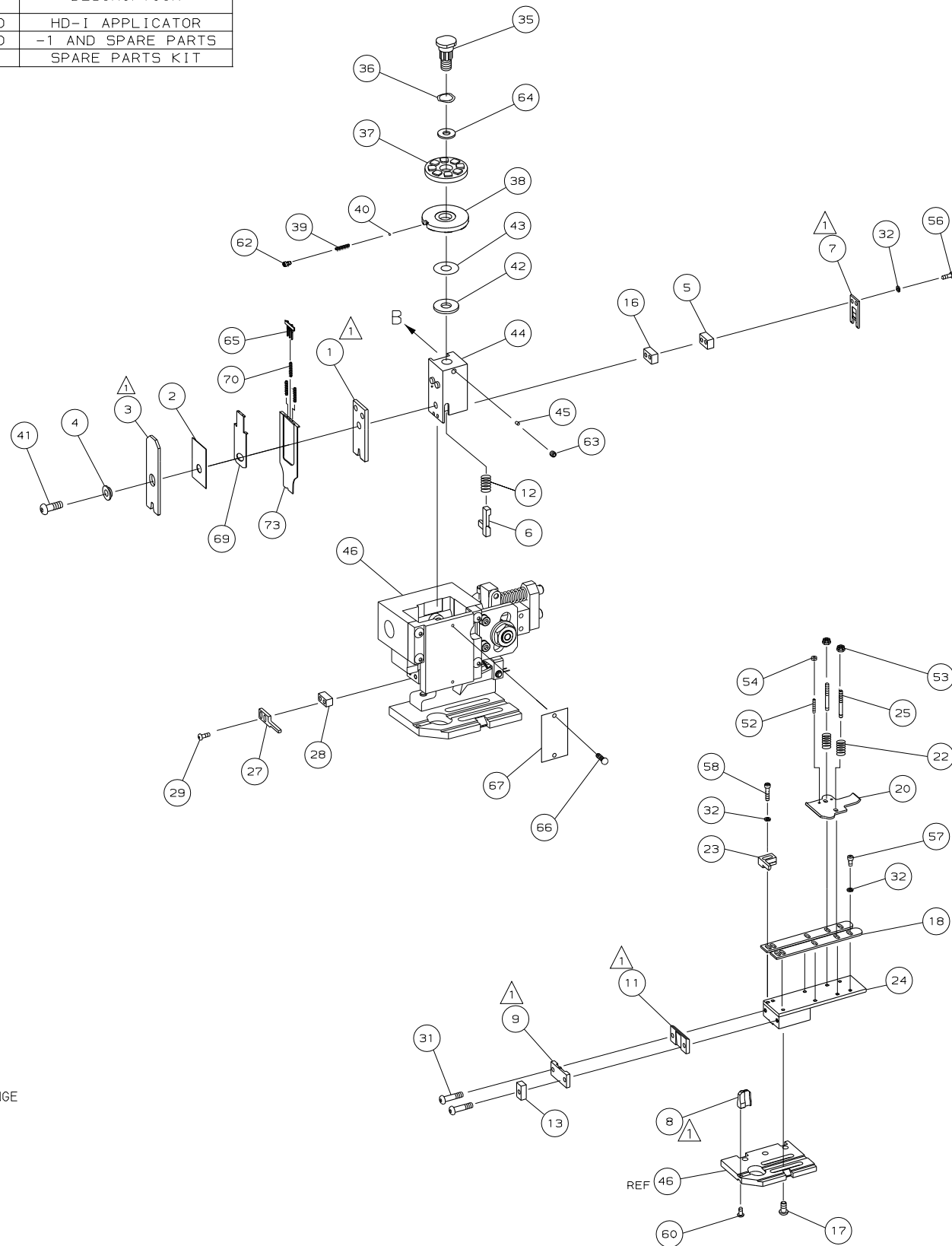
THIS DRAWING IS A CONTROLLED DOCUMENT.		DWN	GOPALAKRISHNA HV		 TE Connectivity			
		CHK	GOPALAKRISHNA HV					
DIMENSIONS:		TOLERANCES UNLESS OTHERWISE SPECIFIED:		APVD	NAME			
		0 PLC ± 1 PLC ± 2 PLC ± 3 PLC ± 4 PLC ± ANGLES ±		STOUGH DALE		END FEED HD-I APPLICATOR		
				PRODUCT SPEC				
				APPLICATION SPEC				
				WEIGHT				
MATERIAL		FINISH		SIZE	CAGE CODE	DRAWING NO	RESTRICTED TO	
				A3		©- 1339645		
CUSTOMER DRAWING				SCALE	SHEET 1 OF 2	REV	B1	

 1. RECOMMENDED SPARE PARTS.

2. GREASE RAM, CAM, CAM FOLLOWER AND FEED ROD LIGHTLY.

3. LUBRICATE DAILY PER THE APPLICATOR INSTRUCTION SHEET SUPPLIED WITH THE APPLICATOR.

 4. THE WIRE AND INSULATION RANGES SHOWN ARE THE TERMINAL RANGE AND ARE NOT THAT OF THE APPLICATOR.



-	1	1	1490525-3	DEPRESSOR, WIRE	73
-	1	1	1339645	PRINT, APPLICATOR LOG SHEET	72
-	1	1	1338705-2	DOCUMENTATION PACKAGE	71
-	3	3	2-23147-2	SPRING, DEPRESSOR	70
-	1	1	1490524-1	SPACER, DEPRESSOR	69
					68
-	1	1	461264-1	PLATE, IDENTIFICATION	67
-	2	2	21017-2	SCR,DRIVE (#2X.19) ID PLATE	66
-	1	1	1424350-1	HOLDER, PIN, WIRED	65
-	1	1	986950-1	WASHER, FLAT PRECISION	64
-	1	1	3-18031-0	SCR,SKT SET (M6X6) RAM	63
-	1	1	18023-9	SCR,SKT CAP (M4X6) CP DSC	62
					61
-	1	1	18024-7	SCR,BHC (M4X10) ANVIL	60
					59
-	2	2	1-18023-3	SCR,SHC (M4X16) HOLD DOWN	58
-	5	5	18023-9	SCR,SHC (M4X6) STRIP GUIDE	57
-	2	2	1-18023-2	SCR,SHC (M4X12) SLUG BLADE	56
					55
-	2	2	18029-1	NUT, HEX (M3) DRAG	54
-	2	2	986965-1	NUT,HEX SL (M4) DRAG STUD	53
-	2	2	2-18032-2	SCR,SKT SET (M3X10) DRAG	52
					51
					50
-	1	1	18024-3	SCR,BHC (M3X10) CAM	49
					48
-	1	1	1338676-1	CAM, POST-FEED 30 & 40 mm ST	47
-	1	1	1338662-1	APPLICATOR, BASIC (SUBASSY)	46
-	1	1	690191-1	PLUG, NYLON	45
-	1	1	1320998-1	RAM	44
-	1	1	690125-1	WASHER, LAMINATED	43
-	1	1	690124-1	WASHER, RAM	42
-	1	1	2-18024-6	SCREW,BHC (M8X25) CRIMPER	41
-	1	1	23241-1	BALL, STEEL	40
-	1	1	2-22278-7	SPRING, COMPRESSION	39
-	1	1	1320922-1	DISC, INSULATION	38
-	1	1	354777-1	WIRE DISC, PLASTIC	37
-	1	1	22480-5	WASHER, SPRING	36
-	1	1	690212-1	POST, RAM	35
					34
					33
-	9	9	18025-2	WASHER,LOCK (M4) SHEAR BL	32
-	2	2	1-18024-0	SCR,BHC (M4X20) SHEAR PL	31
					30
-	2	2	18024-8	SCR,BHC (M4X12) STRIPPER	29
-	1	1	3-690451-2	SPACER, STRIPPER	28
-	1	1	240639-1	STRIPPER	27
					26
-	2	2	1320906-1	DRAG, STUD	25
-	1	1	1320995-5	STRIP GUIDE	24
-	1	1	240825-4	PLATE, STRIP HOLD DOWN	23
-	2	2	4-22281-1	SPRING, DRAG	22
					21
-	1	1	1338665-1	DRAG, STOCK	20
					19
-	2	2	1338663-5	GUIDE, LOWER STRIP	18
-	4	4	1-18024-8	SCR,BHC (M6X12) STRIP GD PL	17
-	1	1	1338708-1	SPACER, SLUG BLADE	16
					15
					14
-	1	1	690481-7	SPACER, HOLD DOWN	13
-	1	1	23846-1	SPRING, HOLD DOWN	12
-	1	1	240644-9	PLATE, REAR SHEAR	11
					10
-	1	1	3-690495-6	PLATE, FRONT SHEAR	9
1	2	1	2-1333219-3	ANVIL	8
-	1	1	690474-4	BLADE, SLUG	7
-	1	1	2-455892-1	HOLD DOWN, TERMINAL	6
-	1	1	240641-6	SPACER, SLUG BLADE	5
-	1	1	2-238009-9	SPACER, BLOCK CRIMPER	4
1	2	1	1-683454-6	CRIMPER, INSULATION	3
-	1	1	455888-4	SPACER, CRIMPER	2
1	2	1	456422-6	CRIMPER, WIRE	1

		-77		-71	-1	PART NO		DESCRIPTION		ITEM NO
← REVISION OF EACH ASSY NO (WHEN BLANK, USE DWG REVISION)										
QTY REQD PER ASSY						PARTS LIST				
		DIMENSIONS: mm [INCHES]			MATL	HT TR		FIN		
DO NOT SCALE PRINT.										
TOLERANCES UNLESS OTHERWISE SPECIFIED:						DR M. CLIFFORD		APP 21MAY02 F. BACKHURST		AMP AMP Incorporated Harrisburg, PA 17105-3608
1 PLC DEC ±						CHK -	REL 15JUL02 L. LOFTHOUSE			
2 PLC DEC ±										
3 PLC DEC ±										
ANGLES ±						NAME				MACHINE REF
RK	JANOS	SURF TEXTURE:				END FEED HD-I APPLICATOR				HD-I APPL
LJL	JUL02	REMOVE BURRS BREAK SHARP EDGES RO. 3X MAX				SCALE	D	DWG NO	1339645	SHEET
APP	DATE									1 OF 1
CAGE CODE		CUSTOMER AND ASSEMBLY DRAWING								RESTRICTED TO
00779										-