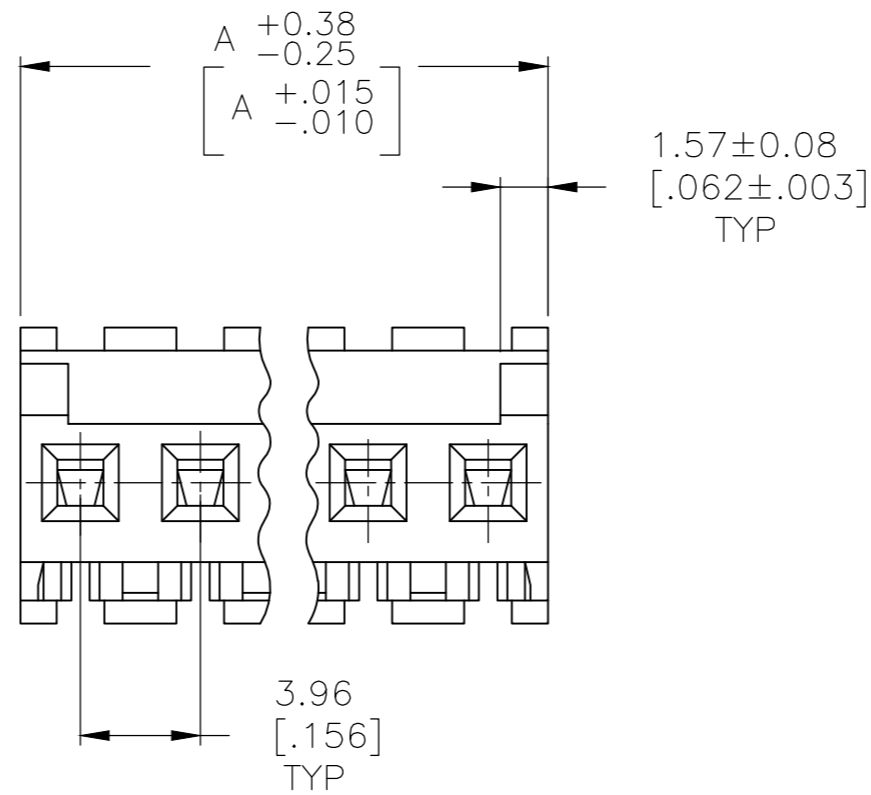
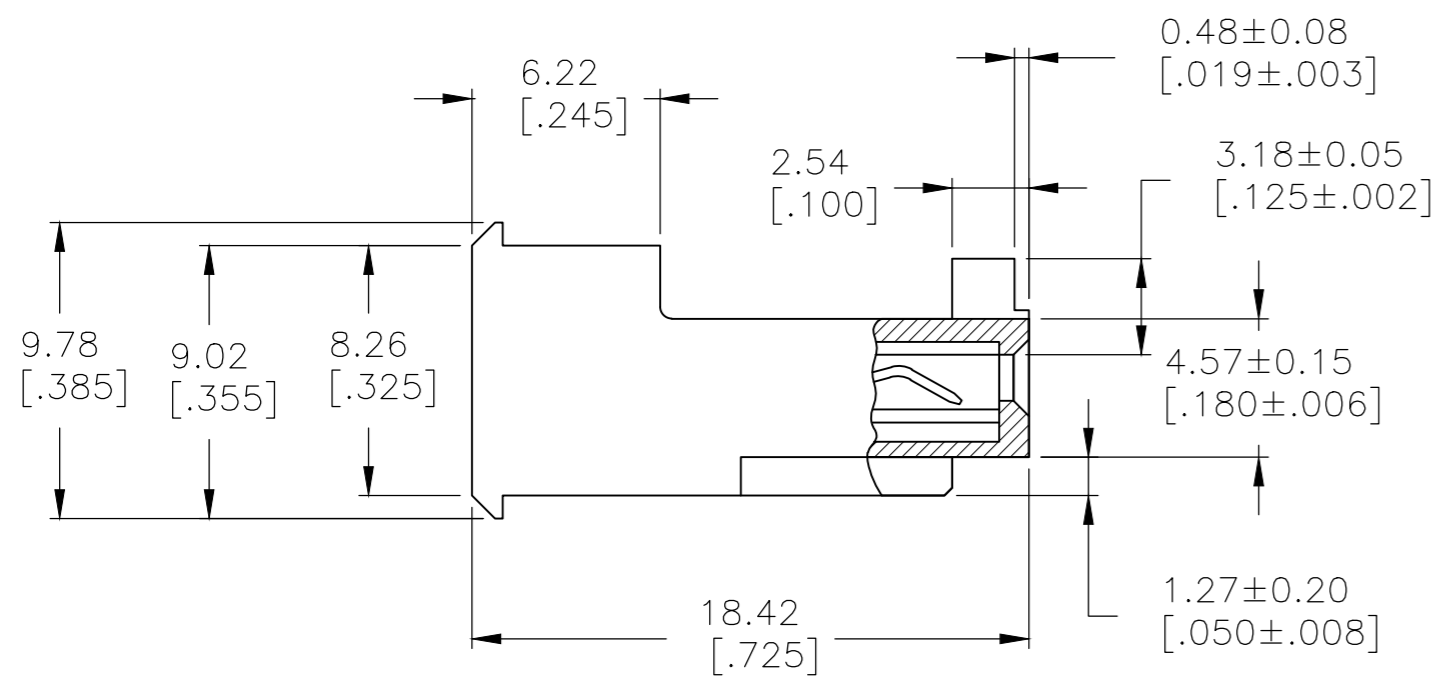
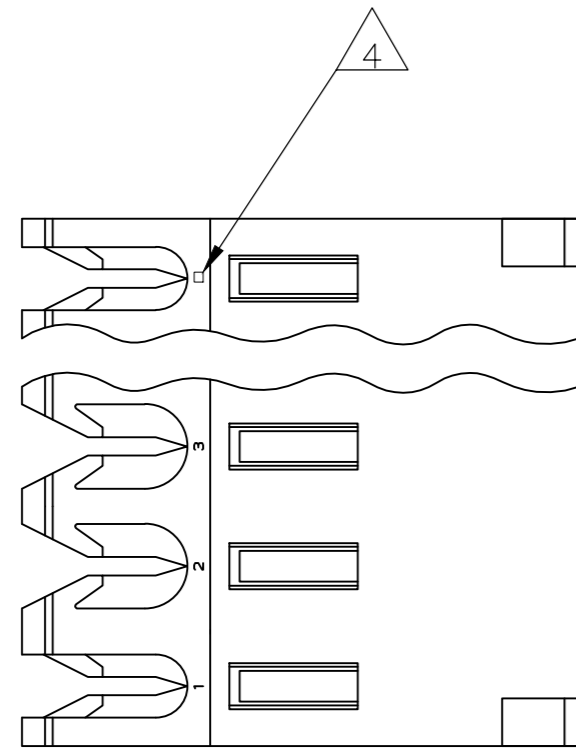


THIS DRAWING IS UNPUBLISHED. RELEASED FOR PUBLICATION  
 © COPYRIGHT - By - TE CONNECTIVITY ALL RIGHTS RESERVED.

LOC	DIST	REVISIONS			
P	LTR	DESCRIPTION	DATE	DWN	APVD
CM	54	D1	ECO-14-012257	04NOV2014	KR OC

- 1 MATERIAL: CONNECTOR - NYLON UL94V-2 (ORANGE).  
 CONTACTS - 0.30[.012] THICK COPPER ALLOY  
 (BRIGHT TIN-LEAD 0.00203[.000080] MIN. THICK FOR CONTACTS 644469-2 THRU 1-644469-4)  
 (MATTE WHISKER MITIGATED TIN 0.00203[.000080] MIN THICKNESS OVER NICKEL UNDERPLATE FOR 3-644469-2 THRU 4-644469-4).
- 2 CONTACTS ACCEPT 18 AWG WIRE WITH 2.41[.095] MAX INSULATION DIAMETER.
- 3 CONTACTS MUST ACCEPT 1.14±0.03[.045±.001] SQUARE POST AND REMAIN LOCKED IN POSITION.
- 4 IDENTIFICATION NUMBER FOR LAST CIRCUIT MAY NOT APPEAR ON ALL ASSEMBLIES.
- 5 DIMENSIONS IN BRACKETS ARE IN INCHES.
- 6 HOUSING FEATURES ARE: FEED-THRU WITHOUT LOCKING RAMP AND WITH POLARIZING TAB.
- 7 OBSOLETE PARTS: OBSOLETE CIS STREAMLINING PER D.RENAUD/D.SINISI



55.47	[2.184]	14	4-644469-4
51.51	[2.028]	13	4-644469-3
47.55	[1.872]	12	4-644469-2
43.59	[1.716]	11	4-644469-1
39.62	[1.560]	10	4-644469-0
35.66	[1.404]	9	3-644469-9
31.70	[1.248]	8	3-644469-8
27.74	[1.092]	7	3-644469-7
23.77	[.936]	6	3-644469-6
19.81	[.780]	5	3-644469-5
15.85	[.624]	4	3-644469-4
11.89	[.468]	3	3-644469-3
7.92	[.312]	2	3-644469-2

7	SUPERSEDED	55.47	[2.184]	14	<del>1-644469-4</del>
7	SUPERSEDED	51.51	[2.028]	13	<del>1-644469-3</del>
		47.55	[1.872]	12	<del>1-644469-2</del>
7	SUPERSEDED	43.59	[1.716]	11	<del>1-644469-1</del>
7	SUPERSEDED	39.62	[1.560]	10	<del>1-644469-0</del>
7	SUPERSEDED	35.66	[1.404]	9	<del>644469-9</del>
7	SUPERSEDED	31.70	[1.248]	8	<del>644469-8</del>
7	SUPERSEDED	27.74	[1.092]	7	<del>644469-7</del>
7	SUPERSEDED	23.77	[.936]	6	<del>644469-6</del>
7	SUPERSEDED	19.81	[.780]	5	<del>644469-5</del>
7	SUPERSEDED	15.85	[.624]	4	<del>644469-4</del>
7	SUPERSEDED	11.89	[.468]	3	<del>644469-3</del>
7	SUPERSEDED	7.92	[.312]	2	<del>644469-2</del>

DIM A	NO OF CIRCUITS	PART NO
-------	----------------	---------

METRIC

THIS DRAWING IS A CONTROLLED DOCUMENT.

DWN B. LEWIS 12 FEB 91	 TE Connectivity MTA 156 CONNECTOR ASSEMBLY, 18 AWG, STANDARD						
CHK R. SWING 12 FEB 91							
APVD D.R. CLARK 20 FEB 91							
PRODUCT SPEC 108-1051							
MATERIAL 1	FINISH 1	APPLICATION SPEC 114-1020	WEIGHT -	SIZE A2	CAGE CODE 00779	DRAWING NO C-644469	RESTRICTED TO -
CUSTOMER DRAWING			SCALE 4:1	SHEET 1 OF 1	REV D1		