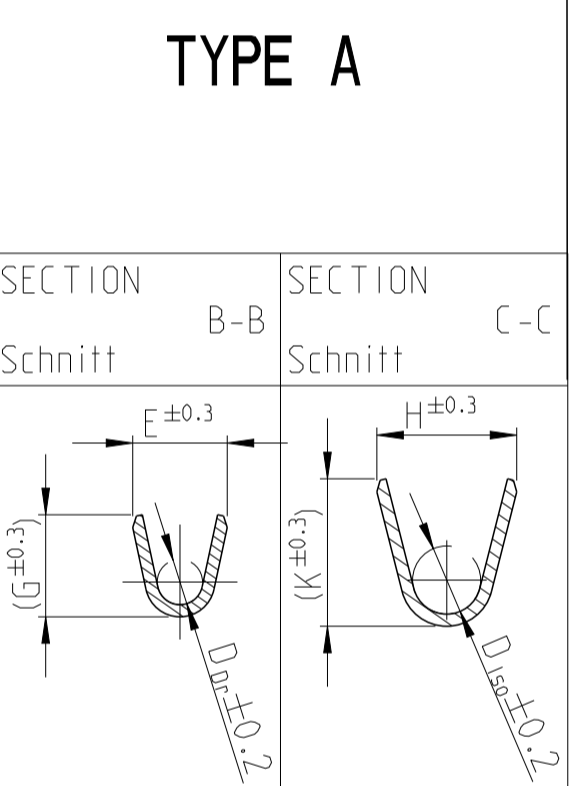
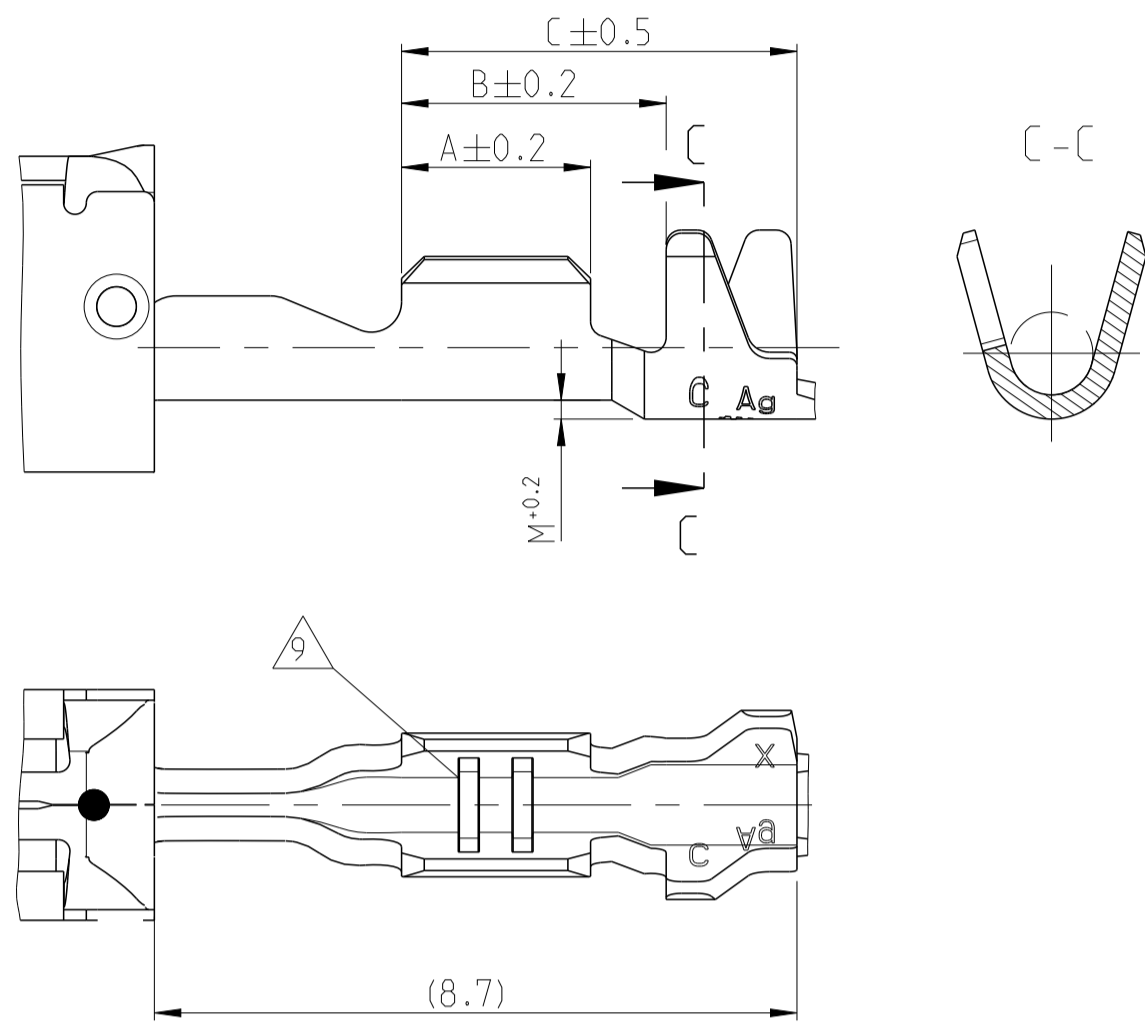
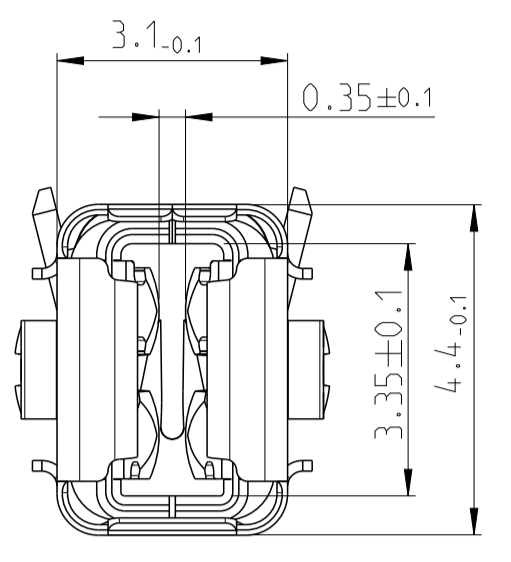
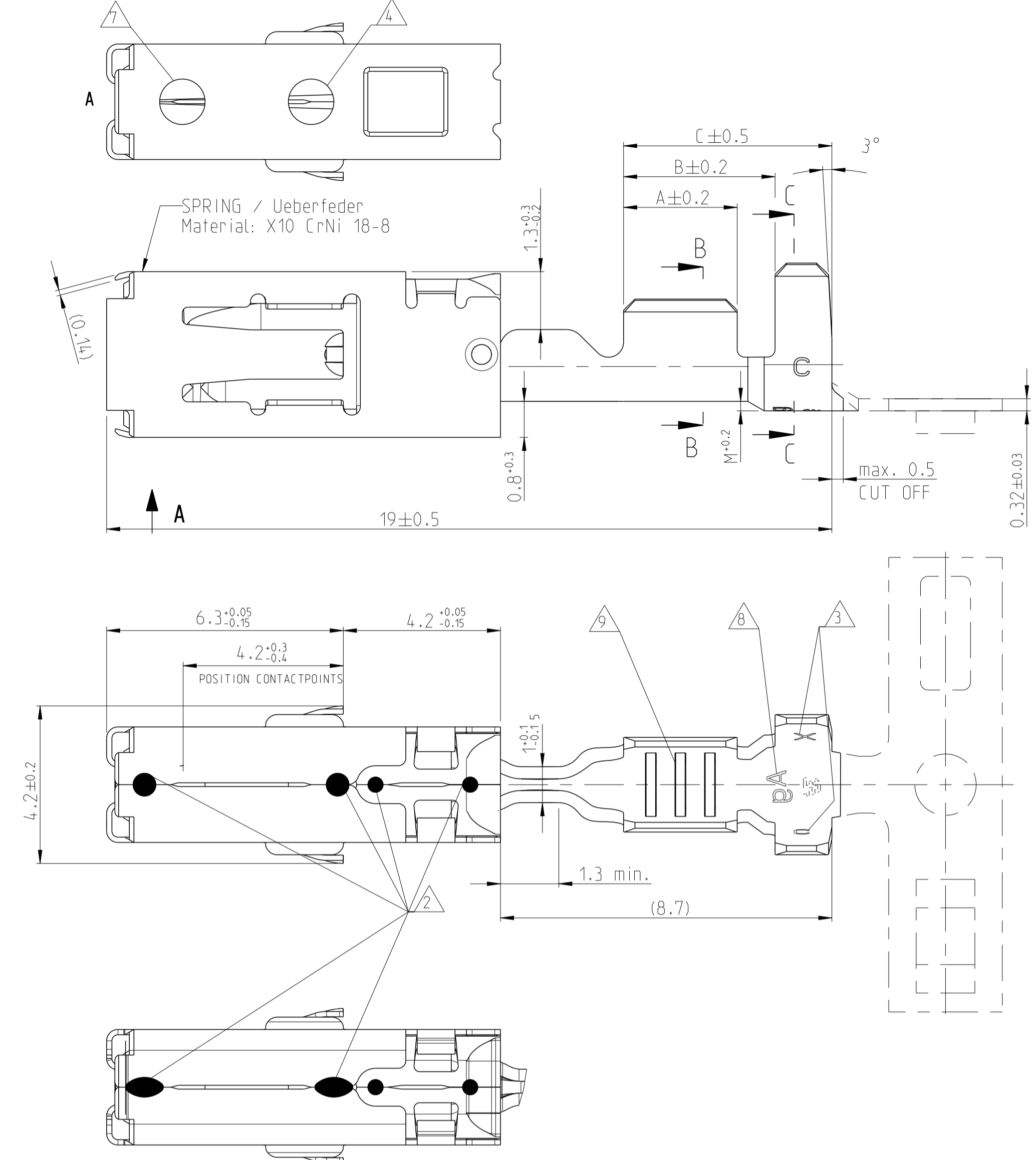


Verwendbar mit Flachstecker 0.8mm und 0.6mm Dicke
USABLE WITH TAB 0.8mm AND TAB 0.6mm THICKNESS

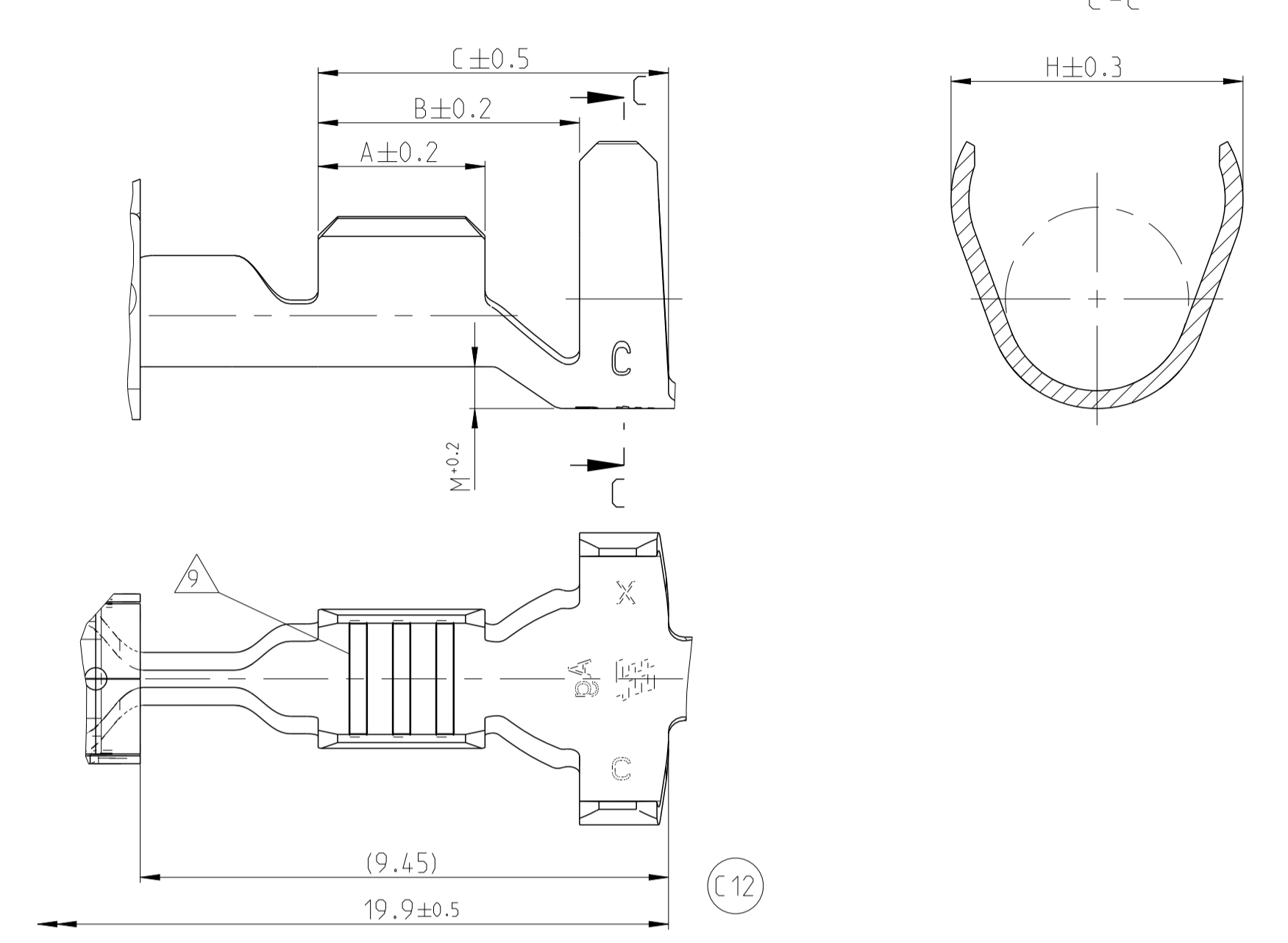
LOC	DIST	REVISONS	DATE	OWN	APVD
AI	-	ÄNDERUNGEN DESCRIPTION REVISIONS			
PROJEKT NR.:	C 10	ECR-11-007727	13APR2011	RL	-
	C 11	ECR-14-004131	19MAR2014	SG	AL
	C 12	ECR-15-001434	02FEB2015	SG	RL

Kontakte fuer FLR-Leitung
CONTACTS FOR FLR-CABLE



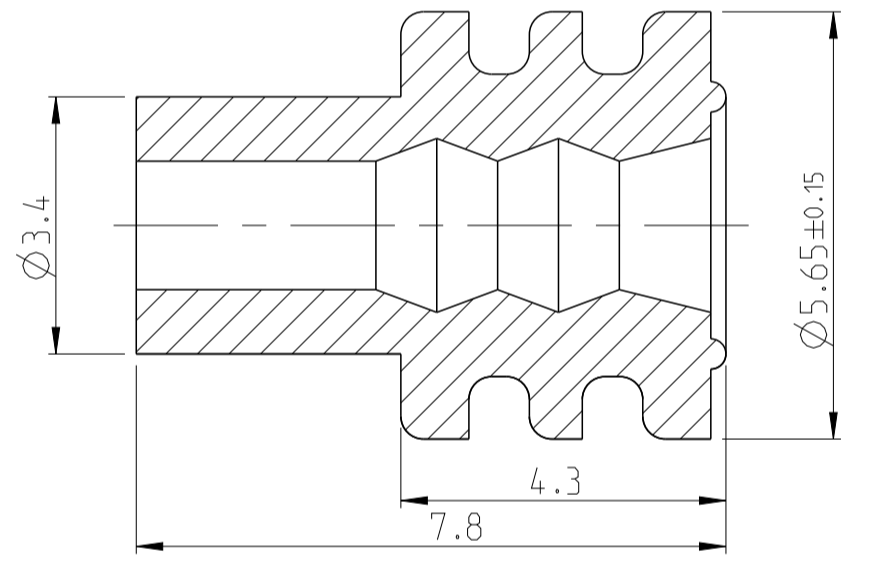
Kontakte fuer Einzel-Dichtung-System: FLR- und FLK-Leitung
CONTACTS FOR SINGLE WIRE SEALING SYSTEM: FLR- AND FLK- CABLE

Masse siehe Darstellung der Kontakte fuer FLR-Leitung
DIMENSIONS SEE FIGURE "CONTACTS FOR FLR-CABLE"



SINGLE WIRE SEALING SYSTEM

ORDER NO. Bestell-Nr.	INSULATION DIA Isolations Ø	COLOUR Farbe
963292-1	2.7...3.0	YELLOW gelb
963293-1	2.0...2.7	REDBROWN rotbraun
963294-1	1.2...2.1	BLUE blau

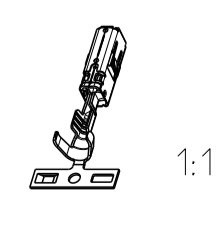


ORDER NO. Bestell-Nr.	REV.	ORDER NO. Bestell-Nr.	WIRE RANGE Drahtgrößenbereich (mm²)	INSULATION DIA Isolations Ø (mm)	MATERIAL Werkstoff	PLATING Ueberzug	LENGTH Laenge	WIRE CRIMP Drahtcrimp	INSUL. CRIMP Isol.-Crimp	FORM OF INS. CRIMP Form des Isol.-Crimp	ORDER NO. Bestell-Nr. TOOL / INSERT Handzange / Matrize	ORDER NO. Bestell-Nr. EXTRACTION TOOL Ausdrueckwerkzeug	CRIMP DATA AND CRIMP TOOL Crimpdaten u. Crimpwerkzeuge											
2-1241396-3	C	2-1241397-3	>1.0-2.5	2.2-3.0	CuNiSi	PRESILVER vorversilbert	A = 3.5 B = 5.2 C = 6.8	E = 3.6 G = 3.8 D _{cr} = 1.8	H = 5.45 K = (4.8) D _{iso} = 3.5 M = 0.85	TYPE A	HANDCRIMP TOOL 539635-1	INSERT / Matrize 539952-2	539969-1											
0-1241396-3	C	0-1241397-3			CuNiSi	PRESILVER vorversilbert																		
0-1241396-2	C	0-1241397-2			CuNiSi	TINPLATED vorverzinkt																		
0-1241396-1	C	0-1241397-1	0.5-1.0	1.4-2.7	CuNiSi	PRESILVER vorversilbert	A = 3.0 B = 4.7 C = 6.3	E = 2.5 G = 2.7 D _{cr} = 1.2	H = 5.25 K = (4.8) D _{iso} = 3.3 M = 0.75	TYPE A	HANDCRIMP TOOL 539635-1	INSERT 4-1579016-1	539969-1											
0-1241394-3	C	0-1241395-3			CuNiSi	TINPLATED vorverzinkt																		
0-1241394-2	C	0-1241395-2			CuNiSi	PRESILVER vorversilbert																		
0-1241394-1	C	0-1241395-1	0.2-0.35	1.1-1.4	CuNiSi	PRESILVER vorversilbert	A = 2.5 B = 4.7 C = 6.3	E = 1.9 G = 1.9 D _{cr} = 0.75	H = 4.85 K = (4.4) D _{iso} = 3.2 M = 0.7	TYPE B	HANDCRIMP TOOL 539635-1	INSERT 4-1579016-1	539969-1											
0-1241392-3	C	0-1241393-3			CuNiSi	TINPLATED vorverzinkt																		
0-1241392-2	C	0-1241393-2			CuNiSi	PRESILVER vorversilbert																		
0-1241392-1	C	0-1241393-1	0.2-0.35	1.1-1.4	CuNiSi	TINPLATED vorverzinkt	A = 3.3 B = 4.3 C = 5.8	E = 2.4 G = 2.3 D _{cr} = 1.0	H = 4.7 K = (4.9) D _{iso} = 2.6 M = 0.4	TYPE A	HANDCRIMP TOOL 539635-1	INSERT / Matrize 539951-2	539969-1											
0-1564984-3	C	0-1564985-3			CuNiSi	PRESILVER vorversilbert																		
0-1564984-2	C	0-1564985-2			CuNiSi	TINPLATED vorverzinkt																		
0-1564984-1	C	0-1564985-1	>1.0-2.5	2.2-3.0	CuNiSi	PRESILVER vorversilbert	A = 3.0 B = 4.0 C = 5.5	E = 1.9 G = 1.9 D _{cr} = 0.75	H = 3.7 K = (3.9) D _{iso} = 1.8 M = 0.2	TYPE B	HANDCRIMP TOOL 539635-1	INSERT 4-1579016-1	539969-1											
0-1241390-3	C	0-1241391-3			CuNiSi	TINPLATED vorverzinkt																		
0-1241390-2	C	0-1241391-2			CuNiSi	PRESILVER vorversilbert																		
0-1241390-1	C	0-1241391-1	0.5-1.0	1.4-2.1	CuNiSi	PRESILVER vorversilbert	A = 2.5 B = 3.5 C = 5.2	E = 2.4 G = 2.3 D _{cr} = 1.0	H = 2.5 K = (2.5) D _{iso} = 1.1 M = 0.2	TYPE B	HANDCRIMP TOOL 539635-1	INSERT 4-1579016-1	539969-1											
0-1241388-3	C	0-1241389-3			CuNiSi	TINPLATED vorverzinkt																		
0-1241388-2	C	0-1241389-2			CuNiSi	PRESILVER vorversilbert																		
0-1241388-1	C	0-1241389-1	0.2-0.35	1.1-1.4	CuNiSi	TINPLATED vorverzinkt	WIRE RANGE Drahtgrößenbereich (mm²)	INSULATION DIA Isolations Ø (mm)	MATERIAL Werkstoff	PLATING Ueberzug	LENGTH Laenge	WIRE CRIMP Drahtcrimp	INSUL. CRIMP Isol.-Crimp	ORDER NO. Bestell-Nr. TOOL / INSERT Handzange / Matrize	ORDER NO. Bestell-Nr. EXTRACTION TOOL Ausdrueckwerkzeug	CRIMP DATA AND CRIMP TOOL Crimpdaten u. Crimpwerkzeuge								
0-1241386-3	C	0-1241387-3			CuNiSi	PRESILVER vorversilbert																		
0-1241386-2	C	0-1241387-2			CuNiSi	TINPLATED vorverzinkt																		
0-1241386-1	C	0-1241387-1	0.2-0.35	1.1-1.4	CuNiSi	PRESILVER vorversilbert	WIRE RANGE Drahtgrößenbereich (mm²)	INSULATION DIA Isolations Ø (mm)	MATERIAL Werkstoff	PLATING Ueberzug	LENGTH Laenge	WIRE CRIMP Drahtcrimp	INSUL. CRIMP Isol.-Crimp	ORDER NO. Bestell-Nr. TOOL / INSERT Handzange / Matrize	ORDER NO. Bestell-Nr. EXTRACTION TOOL Ausdrueckwerkzeug	CRIMP DATA AND CRIMP TOOL Crimpdaten u. Crimpwerkzeuge								
0-1564982-3	C	0-1564983-3			CuNiSi	TINPLATED vorverzinkt																		
0-1564982-2	C	0-1564983-2			CuNiSi	PRESILVER vorversilbert																		
0-1564982-1	C	0-1564983-1	0.2-0.35	1.1-1.4	CuNiSi	TINPLATED vorverzinkt	WIRE RANGE Drahtgrößenbereich (mm²)	INSULATION DIA Isolations Ø (mm)	MATERIAL Werkstoff	PLATING Ueberzug	LENGTH Laenge	WIRE CRIMP Drahtcrimp	INSUL. CRIMP Isol.-Crimp	ORDER NO. Bestell-Nr. TOOL / INSERT Handzange / Matrize	ORDER NO. Bestell-Nr. EXTRACTION TOOL Ausdrueckwerkzeug	CRIMP DATA AND CRIMP TOOL Crimpdaten u. Crimpwerkzeuge								
ORDER NO. Bestell-Nr.	REV.	ORDER NO. Bestell-Nr.			WIRE RANGE Drahtgrößenbereich (mm²)	INSULATION DIA Isolations Ø (mm)											MATERIAL Werkstoff	PLATING Ueberzug	LENGTH Laenge	WIRE CRIMP Drahtcrimp	INSUL. CRIMP Isol.-Crimp	ORDER NO. Bestell-Nr. TOOL / INSERT Handzange / Matrize	ORDER NO. Bestell-Nr. EXTRACTION TOOL Ausdrueckwerkzeug	CRIMP DATA AND CRIMP TOOL Crimpdaten u. Crimpwerkzeuge

SEE APPLICATION SPECIFICATION
siehe Verarbeitungsspezifikation
114-18387

Bemerkungen
NOTES

- Geeignet fuer Flachstecker / TAB 2.8 -0.3 x 0.8 ±0.03
TO BE USED ON Flachstecker / TAB 2.8 -0.3 x 0.6 -0.07
- Laserschweissung wahlweise Punk- oder Linienfoermig (DIE CAUSED)
ALTERNATIVELY LASERWELDED POINT OR LINE SHAPED (FERTIGUNGSBEDINGT)
- Kenntnis fuer Werkzeug und Revisionsstand
DIE-IDENTIFICATION AND REVISION STATUS
- 0.8µm Goldueberzug im Kontaktbereich ueber min. 1.3µm Nickelueberzug;
min. 1µm Zinnueberzug im Crimpbereich.
Zur Kennzeichnung siehe Loch an der Ueberfeder
MIN. 0.8µm GOLDPLATE IN CONTACT AREA OVER MIN. 1.3µm NICKELPLATE;
MIN. 1µm TINPLATE IN CRIMP AREA.
AS INDEX SEE HOLE AT SPRING
- Fuer Doppel- und Einzelcrimp
FOR DOUBLE AND SINGLE CRIMP
- Auswahl der Einzeldichtung entsprechend dem Isolationsdurchmesser
SINGLE WIRE SEAL TO BE SELECTED ACCORDING TO INSULATION-DIA
- Fertigungsbedingtes Loch, befindet sich ab Rev. C an allen Kontakten
MANUFACTURIN-CONDITIONED HOLE, IS STARTING FROM REV. C AT ALL VERSIONS
- Kennzeichnung mit "Ag" bei Silberueberzug im Kontaktbereich
MARKING WITH "Ag" FOR SILVERPLATE IN CONTACT AREA
- Unterschiedliche Ausfuehrung der Rillen moeglich
DIFFERENT FORM OF THE SERRATION POSSIBLE
- PN 1241386 und 1241392 nicht fuer Neuanwendung, Ersatz durch PN 1564982 und 1564984
- Einzelheiten der Ausfuehrung bleiben dem Hersteller ueberlassen
DETAILS OF DESIGN ARE LEFT TO MANUFACTURER
- Fertigteil an den Kontaktpunkten geschmiert
FINISHED PRODUCT AT CONTACT POINTS LUBRICATED



1:1

THIS DRAWING IS A CONTROLLED DOCUMENT. DWG: L. Liebing 06JUN2006
DATE OF IMPLEMENTATION: 06.06.2006
DATE OF LAST MODIFICATION: 06.06.2006
DATE OF THIS DRAWING: 06.06.2006

TOLEFRANZLOS AND/OR TOLERANCE	OTHERWISE SPECIFIED:	APVD	NAME
0 PLC ±	GENERAL ±	APVD	NAME
1 PLC ±	GENERAL ±	APVD	NAME
2 PLC ±	GENERAL ±	APVD	NAME
4 PLC ±	GENERAL ±	APVD	NAME

PRODUCT SPEC
PRODUCT SPEC: 108-18717
APPLICATION SPEC
VERARBEITUNGSSPEZ: 114-18387

WEIGHT GEWICHT
Customer Drawing

TE Connectivity
PRODUCT GROUP DRAWING FOR
AMP MCP 2.8K
NOT the LATEST REVISION

SCALE: 10:1 SHEET 1 OF 1

Mouser Electronics

Authorized Distributor

Click to View Pricing, Inventory, Delivery & Lifecycle Information:

[TE Connectivity:](#)

[1241389-2](#)