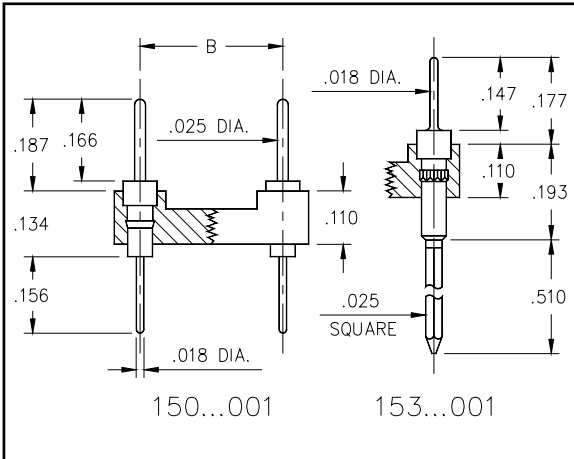




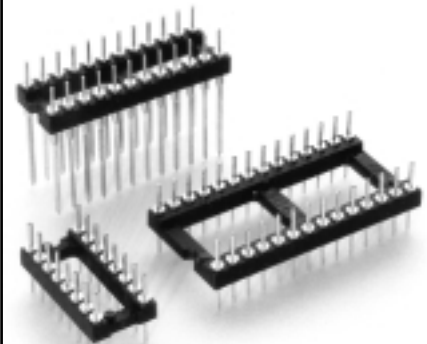
DUAL-IN-LINE PIN HEADERS

Solder Tail and Wrapost Open Frame

Series 150, 153



- Series 150 DIL Headers are equipped with .025" dia. pins (M-M# 0290). See page 173 for details.
- Series 153 DIL Headers have 3-level wraposts (M-M# 5301). See page 184 for details.
- Both series have .018" diameter solder tails which are pluggable into standard contacts.



Total number of pins				Quantity per tube	Ordering Information		
	A	B	C		Solder Tail	3 Level Wrapost	
10	0.5	0.2	0.3	40	150-XX-210-00-001	153-XX-210-00-001	
4	0.2	0.3	0.4	102	150-XX-304-00-001	153-XX-304-00-001	
6	0.3	0.3	0.4	67	150-XX-306-00-001	153-XX-306-00-001	
8	0.4	0.3	0.4	50	150-XX-308-00-001	153-XX-308-00-001	
10	0.5	0.3	0.4	40	150-XX-310-00-001	153-XX-310-00-001	
14	0.7	0.3	0.4	29	150-XX-314-00-001	153-XX-314-00-001	
16	0.8	0.3	0.4	25	150-XX-316-00-001	153-XX-316-00-001	
18	0.9	0.3	0.4	22	150-XX-318-00-001	153-XX-318-00-001	
20	1.0	0.3	0.4	20	150-XX-320-00-001	153-XX-320-00-001	
22	1.1	0.3	0.4	18	150-XX-322-00-001	153-XX-322-00-001	
24	1.2	0.3	0.4	16	150-XX-324-00-001	153-XX-324-00-001	
28	1.4	0.3	0.4	14	150-XX-328-00-001	153-XX-328-00-001	
20	1.0	0.4	0.5	20	150-XX-420-00-001	153-XX-420-00-001	
22	1.1	0.4	0.5	18	150-XX-422-00-001	153-XX-422-00-001	
24	1.2	0.4	0.5	16	150-XX-424-00-001	153-XX-424-00-001	
28	1.4	0.4	0.5	14	150-XX-428-00-001	153-XX-428-00-001	
32	1.6	0.4	0.5	12	150-XX-432-00-001	153-XX-432-00-001	
24	1.2	0.6	0.7	16	150-XX-624-00-001	153-XX-624-00-001	
28	1.4	0.6	0.7	14	150-XX-628-00-001	153-XX-628-00-001	
32	1.6	0.6	0.7	12	150-XX-632-00-001	153-XX-632-00-001	
36	1.8	0.6	0.7	11	150-XX-636-00-001	153-XX-636-00-001	
40	2.0	0.6	0.7	10	150-XX-640-00-001	153-XX-640-00-001	
42	2.1	0.6	0.7	9	150-XX-642-00-001	153-XX-642-00-001	
48	2.4	0.6	0.7	8	150-XX-648-00-001	153-XX-648-00-001	
50	2.5	0.6	0.7	8	150-XX-650-00-001	153-XX-650-00-001	
52	2.6	0.6	0.7	7	150-XX-652-00-001	153-XX-652-00-001	
50	2.5	0.9	1.0	8	150-XX-950-00-001	153-XX-950-00-001	
52	2.6	0.9	1.0	7	150-XX-952-00-001	153-XX-952-00-001	
64	3.2	0.9	1.0	6	150-XX-964-00-001	153-XX-964-00-001	
SPECIFY PLATING CODE XX=					10	90	
Pin Plating					10μ" Au	200μ" Sn/Pb	

*XX= Plating Code
See Below*

For High Temperature Insulators Add '100' To End Of Part Numbers