

PART NUMBER	REV	TERMINATOR	FEED TYPE	DESCRIPTION
1528635-1	A	LEADMAKER	MECH POST FEED	CUTS CARRIER
1528635-2	A	BENCH	MECH PRE FEED	CUTS CARRIER
1528635-6	A	LEADMAKER	MECH POST FEED	CONTINUOUS CARRIER
7-1528635-1	A	LEADMAKER	MECH POST FEED	-1 AND SPARE PARTS
7-1528635-2	A	BENCH	MECH PRE FEED	-2 AND SPARE PARTS
7-1528635-6	A	LEADMAKER	MECH POST FEED	-6 AND SPARE PARTS
7-1528635-7	A	-	-	SPARE PARTS KIT

CRIMP	SIZE	TYPE	RANGE
WIRE	3.68 [1.45 IN]	F	3.00mm ² -5.00mm ²
INSUL	5.33 [2.10 IN]	F	3.49-5.24 [1.37-.206 IN]

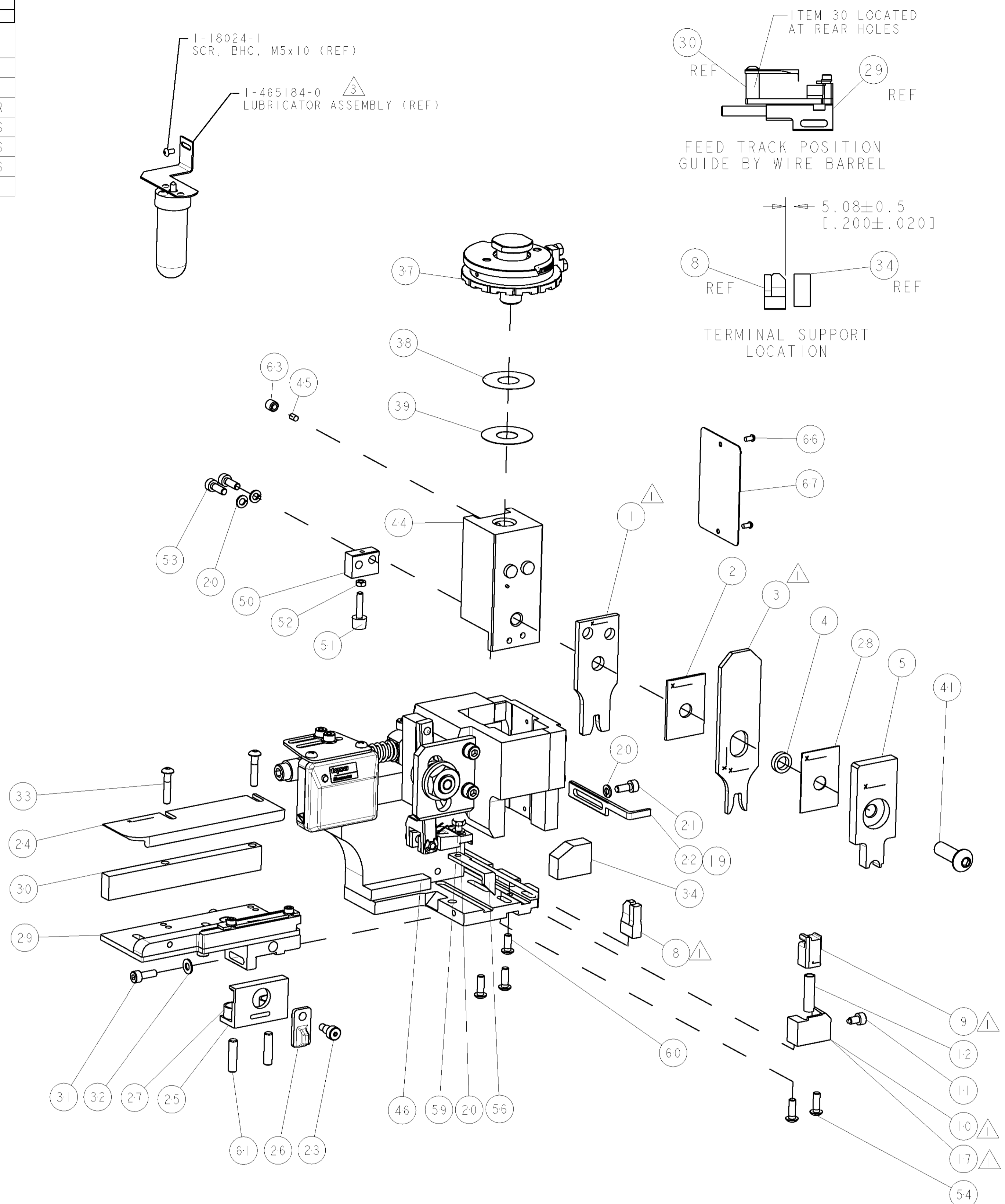
WIRE STRIP LENGTH	APPL INSTRUCTIONS
5.60 [2.20 IN]	408-8322 & 408-8490

TERMINAL APPL SPEC	FEED
-	15.24 [6.00 IN]

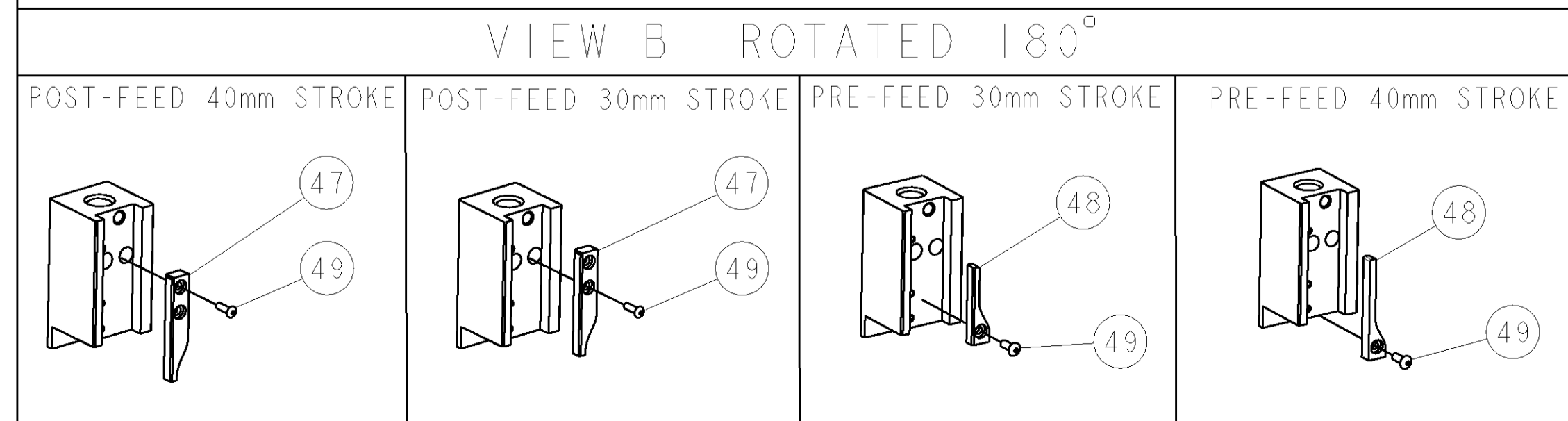
TYCO PN	MANUF 'S PN
1949005-1	12084595

WIRE SIZE	CRIMP HEIGHT	REF SETTING
5.00mm ²	2.35 ±0.05 [0.93 ±.002 IN]	C 6
4.00mm ²	2.25 ±0.05 [0.89 ±.002 IN]	D 3
3.00mm ²	2.15 ±0.05 [0.85 ±.002 IN]	D 9

- △ RECOMMENDED SPARE PARTS.
- 2. GREASE RAM, CAM, CAM FOLLOWER AND FEED ROD LIGHTLY.
- △ CERTAIN TERMINALS REQUIRE LUBRICATION. REFER TO THE APPLICATOR INSTRUCTION SHEET FOR MORE INFORMATION.
- 4. LUBRICATE DAILY PER THE APPLICATOR INSTRUCTION SHEET SUPPLIED WITH THE APPLICATOR.
- △ ALL CRIMP DATA SUPPLIED BY TERMINAL MANUFACTURER. INSULATION CRIMP HEIGHTS REQUIRED:-
 3.00 & 4.00mm² = 4.20mm ICH
 5.00mm² = 4.40mm ICH
 TENSILE VALUES REQUIRED:-
 3.00mm² = 250 N
 4.00mm² = 275 N
 5.00mm² = 300 N



* WARNING
 ON INSTALLATION, SET WIRE DISC TO LARGEST WIRE SIZE SETTING. USE OF SETTINGS BELOW MIN. REQUIRED CRIMP HEIGHT SETTING WILL CAUSE DAMAGE TO CRIMP TOOLING.



-77	-76	-72	-71	-6	-2	-1	PART NO	DESCRIPTION	ITEM NO
-	-	-	-	-	-	-	-	-	84
-	-	-	-	-	-	-	-	-	83
-	-	-	-	-	-	-	-	-	82
-	-	-	-	-	-	-	-	-	81
-	-	-	-	-	-	-	-	-	80
-	-	-	-	-	-	-	-	-	79
-	-	-	-	-	-	-	-	-	78
-	-	-	-	-	-	-	-	-	77
-	-	-	-	-	-	-	-	-	76
-	-	-	-	-	-	-	-	-	75
-	-	-	-	-	-	-	-	-	74

SET UP GAGE 458637-3		LOC	DIST	REVISONS			
P	LTR	DESCRIPTION	DATE	BY	APPD		
A		SEE ECO-06-010518	04MAY2006	LJL	MC		

-	-	-	-	-	-	-	-	-	73
-	-	-	-	-	-	-	-	-	72
-	-	-	-	-	-	-	-	-	71
-	-	-	-	-	-	-	-	-	70
-	-	-	-	-	-	-	-	-	69
-	-	-	-	-	-	-	-	-	68
-	-	-	-	-	-	-	-	-	67
-	-	-	-	-	-	-	-	-	66
-	-	-	-	-	-	-	-	-	65
-	-	-	-	-	-	-	-	-	64
-	-	-	-	-	-	-	-	-	63
-	-	-	-	-	-	-	-	-	62
-	-	-	-	-	-	-	-	-	61
-	-	-	-	-	-	-	-	-	60
-	-	-	-	-	-	-	-	-	59
-	-	-	-	-	-	-	-	-	58
-	-	-	-	-	-	-	-	-	57
-	-	-	-	-	-	-	-	-	56
-	-	-	-	-	-	-	-	-	55
-	-	-	-	-	-	-	-	-	54
-	-	-	-	-	-	-	-	-	53
-	-	-	-	-	-	-	-	-	52
-	-	-	-	-	-	-	-	-	51
-	-	-	-	-	-	-	-	-	50
-	-	-	-	-	-	-	-	-	49
-	-	-	-	-	-	-	-	-	48
-	-	-	-	-	-	-	-	-	47
-	-	-	-	-	-	-	-	-	46
-	-	-	-	-	-	-	-	-	45
-	-	-	-	-	-	-	-	-	44
-	-	-	-	-	-	-	-	-	43
-	-	-	-	-	-	-	-	-	42
-	-	-	-	-	-	-	-	-	41
-	-	-	-	-	-	-	-	-	40
-	-	-	-	-	-	-	-	-	39
-	-	-	-	-	-	-	-	-	38
-	-	-	-	-	-	-	-	-	37
-	-	-	-	-	-	-	-	-	36
-	-	-	-	-	-	-	-	-	35
-	-	-	-	-	-	-	-	-	34
-	-	-	-	-	-	-	-	-	33
-	-	-	-	-	-	-	-	-	32
-	-	-	-	-	-	-	-	-	31
-	-	-	-	-	-	-	-	-	30
-	-	-	-	-	-	-	-	-	29
-	-	-	-	-	-	-	-	-	28
-	-	-	-	-	-	-	-	-	27
-	-	-	-	-	-	-	-	-	26
-	-	-	-	-	-	-	-	-	25
-	-	-	-	-	-	-	-	-	24
-	-	-	-	-	-	-	-	-	23
-	-	-	-	-	-	-	-	-	22
-	-	-	-	-	-	-	-	-	21
-	-	-	-	-	-	-	-	-	20
-	-	-	-	-	-	-	-	-	19
-	-	-	-	-	-	-	-	-	18
-	-	-	-	-	-	-	-	-	17
-	-	-	-	-	-	-	-	-	16
-	-	-	-	-	-	-	-	-	15
-	-	-	-	-	-	-	-	-	14
-	-	-	-	-	-	-	-	-	13
-	-	-	-	-	-	-	-	-	12
-	-	-	-	-	-	-	-	-	11
-	-	-	-	-	-	-	-	-	10
-	-	-	-	-	-	-	-	-	9
-	-	-	-	-	-	-	-	-	8
-	-	-	-	-	-	-	-	-	7
-	-	-	-	-	-	-	-	-	6
-	-	-	-	-	-	-	-	-	5
-	-	-	-	-	-	-	-	-	4
-	-	-	-	-	-	-	-	-	3
-	-	-	-	-	-	-	-	-	2
-	-	-	-	-	-	-	-	-	1

ITEM NO	PART NO	DESCRIPTION
77	-76	-72
76	-71	-6
75	-2	-1
74		
73		

DIMENSIONS:	TOLERANCES UNLESS OTHERWISE SPECIFIED:
mm [IN]	0 PLC ±
	1 PLC ±
	2 PLC ±
	3 PLC ±
	4 PLC ±
	ANGLES ±

MATERIAL	FINISH	WEIGHT	CUSTOMER DRAWING
-	-	-	-

DATE	BY	APPD	NAME
30MAR2006	D. PROUSE	30MAR2006	M. CLIFFORD

TYCO	Electronics
Tyco Electronics Harrisburg, PA 17105-3608	

SIZE	CAGE CODE	DRAWING NO	RESTRICTED TO
A	00779	1528635	-

SCALE	SHEET	OF	REV
3:5	1	1	A