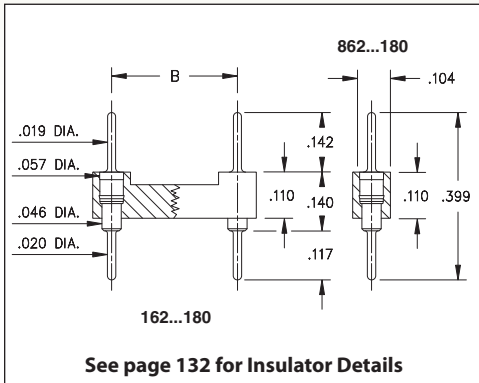
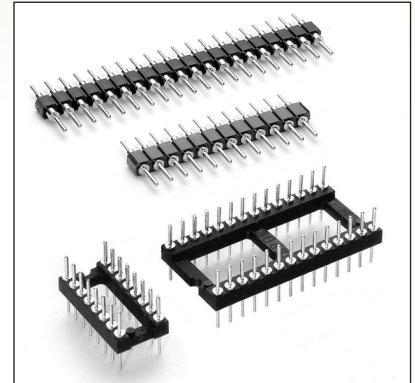


# DUAL-IN-LINE HEADERS

## SERIES 162, 862 • SHRINK DIP HEADER AND STRIPS, SOLDER TAIL



- High density DIP headers & strips for adapters and board stacking applications with .070" lead spacing
- Series 162 DIP headers and Series 862 strip headers use MM #6218 pins. See page 208 for details
- Insulators are high temperature thermoplastic, suitable for all soldering operations
- For Electrical, Mechanical and Environmental Data, see page 264 for details



Total number of pins				Quantity per tube	<h3>ORDERING INFORMATION</h3>				
	A	B	C						
16	0.572	0.3	0.39	35	162-XX-316-00-180000				
28	0.992	0.4	0.49	20	162-XX-428-00-180000				
30	1.062	0.4	0.49	18	162-XX-430-00-180000				
48	1.692	0.4	0.49	12	162-XX-448-00-180000				
20	0.712	0.6	0.69	28	162-XX-620-00-180000				
28	0.992	0.6	0.69	20	162-XX-628-00-180000				
40	1.412	0.6	0.69	14	162-XX-640-00-180000				
42	1.482	0.6	0.69	13	162-XX-642-00-180000				
48	1.692	0.6	0.69	12	162-XX-648-00-180000				
52	1.832	0.6	0.69	11	162-XX-652-00-180000				
56	1.972	0.6	0.69	10	162-XX-656-00-180000				
64	2.252	0.6	0.69	9	162-XX-664-00-180000				
68	2.392	0.6	0.69	8	162-XX-668-00-180000				
64	2.252	0.75	0.84	8	162-XX-764-00-180000				
					<b>SINGLE ROW STRIP HEADER</b> If desired, we will supply any length up to 21 pins.				
21	1.482	---	.104	---	862-XX-021-00-180000				
<b>SPECIFY PLATING CODE XX =</b>					10 ◆	90	40 ◆		
Pin Plating					10 μ" Au	200 μ" Sn/Pb	200 μ" Sn		

XX=Plating Code  
See Below



# Mouser Electronics

Authorized Distributor

Click to View Pricing, Inventory, Delivery & Lifecycle Information:

## Mill-Max:

[162-10-316-00-180000](#) [162-10-428-00-180000](#) [162-10-430-00-180000](#) [162-10-448-00-180000](#) [162-10-620-00-180000](#) [162-10-628-00-180000](#) [162-10-640-00-180000](#) [162-10-642-00-180000](#) [162-10-648-00-180000](#) [162-10-652-00-180000](#) [162-10-656-00-180000](#) [162-10-664-00-180000](#) [162-10-668-00-180000](#) [162-40-316-00-180000](#) [162-40-428-00-180000](#) [162-40-430-00-180000](#) [162-40-448-00-180000](#) [162-40-620-00-180000](#) [162-40-628-00-180000](#) [162-40-640-00-180000](#) [162-40-642-00-180000](#) [162-40-648-00-180000](#) [162-40-652-00-180000](#) [162-40-656-00-180000](#) [162-40-664-00-180000](#) [162-40-668-00-180000](#) [162-90-316-00-180000](#) [162-90-428-00-180000](#) [162-90-430-00-180000](#) [162-90-448-00-180000](#) [162-90-620-00-180000](#) [162-90-628-00-180000](#) [162-90-640-00-180000](#) [162-90-642-00-180000](#) [162-90-648-00-180000](#) [162-90-652-00-180000](#) [162-90-656-00-180000](#) [162-90-664-00-180000](#) [162-90-668-00-180000](#) [862-10-021-00-180000](#) [862-40-021-00-180000](#) [862-90-021-00-180000](#)