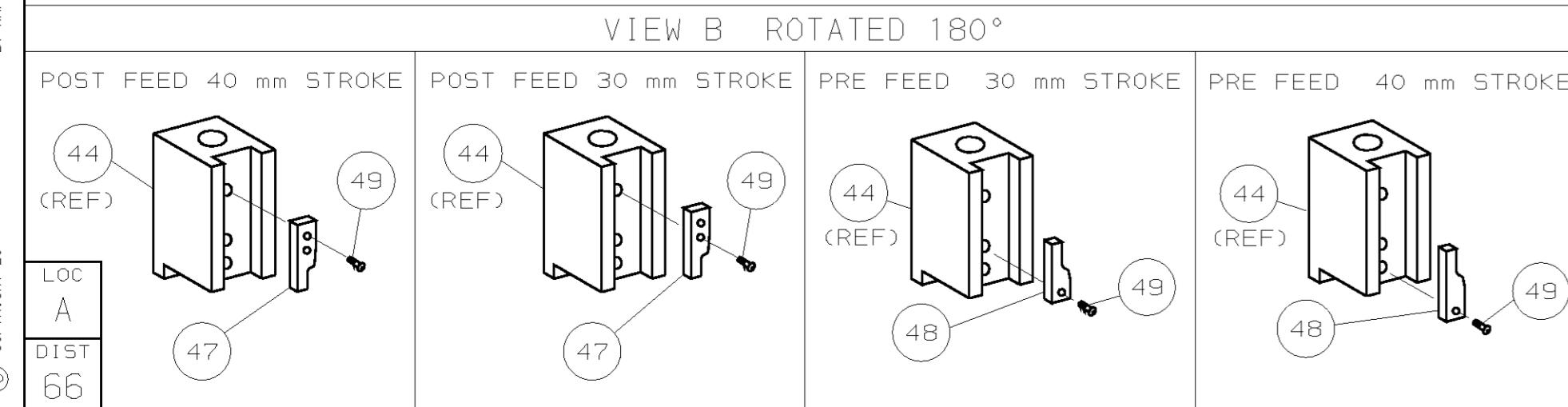
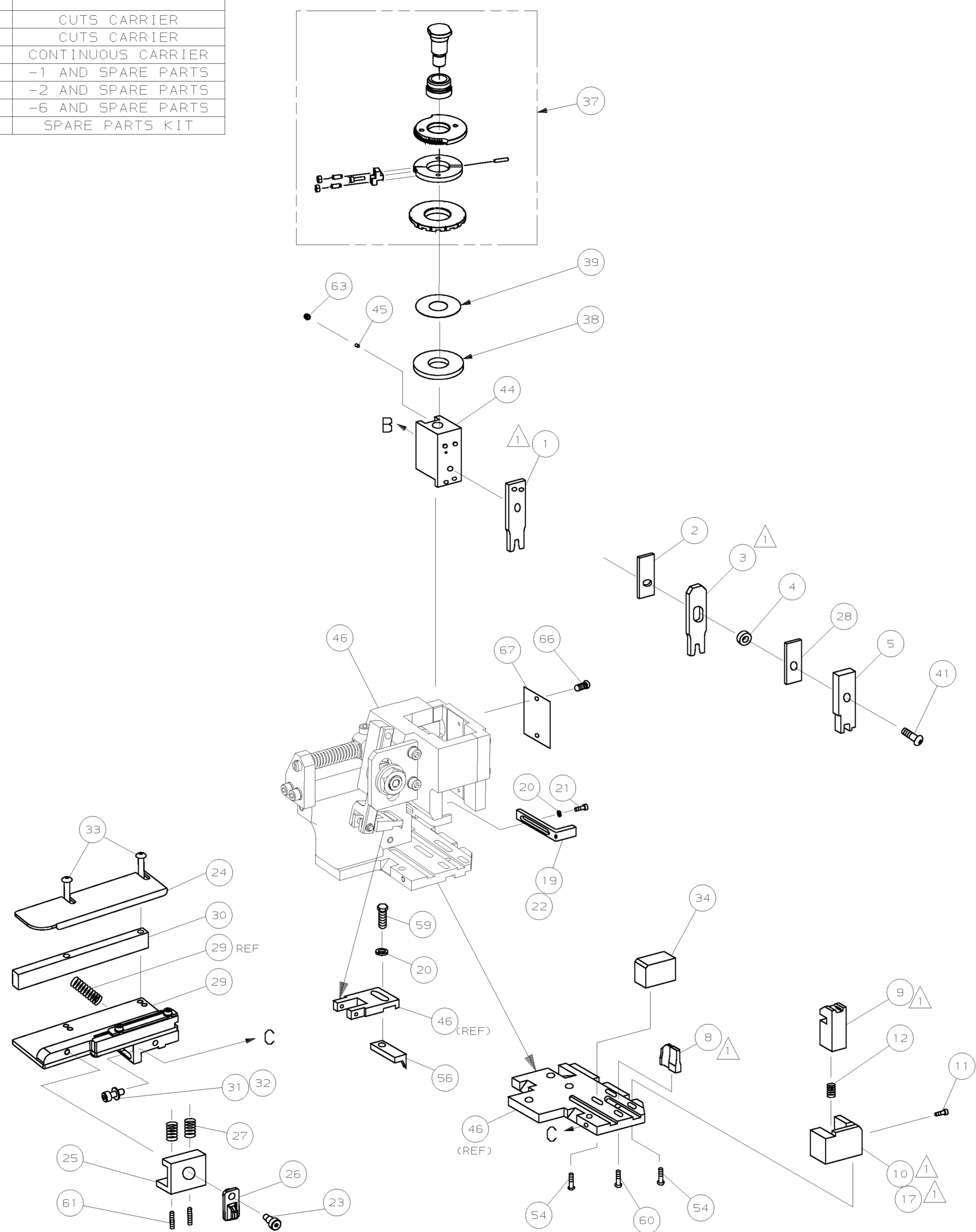


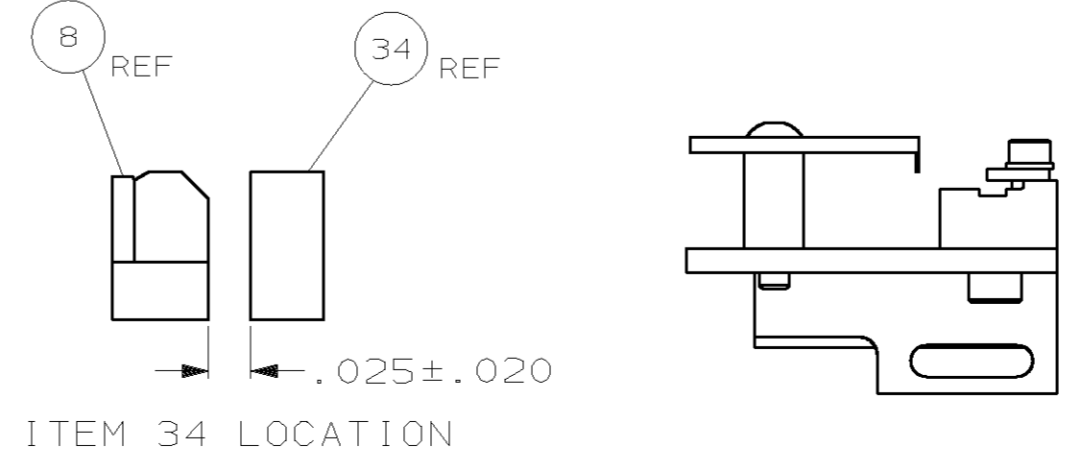
PART NUMBER	REV	FIRST USED	TERMINATOR	FEED TYPE	DESCRIPTION
1528515-1	A	-	LEADMAKER	MECH POST FEED	CUTS CARRIER
1528515-2	A	-	BENCH	MECH PRE FEED	CUTS CARRIER
1528515-6	A	-	LEADMAKER	MECH POST FEED	CONTINUOUS CARRIER
7-1528515-1	A	-	LEADMAKER	MECH POST FEED	-1 AND SPARE PARTS
7-1528515-2	A	-	BENCH	MECH PRE FEED	-2 AND SPARE PARTS
7-1528515-6	A	-	LEADMAKER	MECH POST FEED	-6 AND SPARE PARTS
7-1528515-7	A	-	-	-	SPARE PARTS KIT

CRIMP DATA ADIMPEX TERMINAL / AMP CRIMP SPECS			
TERMINAL NAME: BOARD TO WIRE CRIMP STYLE CONNECTOR			
CRIMP	SIZE	TYPE	RANGE
WIRE	1.57 [0.062 IN]	F	24-18 AWG
INSUL	2.54 [0.100 IN]	0	2.0-2.4 [0.079-.094 IN]
WIRE STRIP LENGTH		APPL INSTRUCTION	
3.00-3.80 [0.118-.150 IN]		408-8322 & 408-8490	
TERMINAL	-	FEED	-
APPL SPEC	-	8.60 [0.339 IN]	-
TERMINALS APPLIED			
AMP TERM PN	MFR TERM PN	-	-
1572676	MX508-2 N5	-	-
-	-	-	-
-	-	-	-
-	-	-	-
-	-	-	-
-	-	-	-
-	-	-	-
-	-	-	-
-	-	-	-
WIRE SIZE	CRIMP HEIGHT	REF SETTING	
mm ² AWG			
18 AWG	1.19 ±0.05 [0.047 ±0.002 IN]	C 0	
20 AWG	1.04 ±0.05 [0.041 ±0.002 IN]	D 0	
22 AWG or 0.35mm ²	0.99 ±0.05 [0.039 ±0.002 IN]	D 4	
24 AWG	0.91 ±0.05 [0.036 ±0.002 IN]	D 9	

- ⚠ RECOMMENDED SPARE PARTS.
- 2. GREASE RAM, CAM, CAM FOLLOWER AND FEED ROD LIGHTLY.
- 3. LUBRICATE DAILY PER THE APPLICATOR INSTRUCTION SHEET SUPPLIED WITH THE APPLICATOR.
- 4. ALL CRIMP DATA CALCULATED BY TYCO ELECTRONICS UK LTD.



*** WARNING:**
ON INSTALLATION, SET WIRE DISC TO LARGEST WIRE SIZE SETTING. USE OF SETTINGS BELOW MIN REQUIRED CRIMP HEIGHT SETTING WILL CAUSE DAMAGE TO CRIMP TOOLING.



QTY	RECD PER ASSY	PART NO	DESCRIPTION	ITEM NO					
-	1	1	1	1	1	1	1528515	PRINT, APPLICATOR LOG SHEET	73
-	1	1	1	1	1	1	1338705-3	DOCUMENTATION PACKAGE	71
-	-	-	-	-	-	-	-	-	70
-	-	-	-	-	-	-	-	-	69
-	-	-	-	-	-	-	-	-	68
-	1	1	1	1	1	1	461264-5	PLATE, IDENTIFICATION	67
-	2	2	2	2	2	2	21017-2	SCR,DRIVE (#2x.19) ID PLATE	66
-	-	-	-	-	-	-	-	-	65
-	-	-	-	-	-	-	-	-	64
-	1	1	1	1	1	1	3-18031-0	SCR,SKT SET (M6X6) RAM	63
-	-	-	-	-	-	-	-	-	62
-	2	2	2	2	2	2	2-18032-5	SCR,SKT SET (M5X20) DRAG	61
-	1	1	1	1	1	1	18024-7	SCR,BHC (M4X10) ANVIL	60
-	1	1	1	1	1	1	5-18022-2	SCR,HEX (M4X8) FEED FINGER	59
-	-	-	-	-	-	-	-	-	58
-	-	-	-	-	-	-	-	-	57
-	1	1	1	1	1	1	1338685-1	PAWL, FEED	56
-	-	-	-	-	-	-	-	-	55
-	4	4	4	4	4	4	18024-8	SCR,BHC (M4X12) SHEAR HOLDER	54
-	-	-	-	-	-	-	-	-	53
-	-	-	-	-	-	-	-	-	52
-	-	-	-	-	-	-	-	-	51
-	-	-	-	-	-	-	-	-	50
-	1	1	1	1	1	1	18024-3	SCR,BHC (M3X10) CAM	49
-	-	-	-	-	-	-	-	-	48
-	1	-	1	-	1	-	1338676-1	CAM, PRE FEED 30 & 40 mm ST	47
-	1	1	1	1	1	1	1320999-3	APPLICATOR BASIC SUBASSY	46
-	1	1	1	1	1	1	690191-1	PLUG, NYLON	45
-	1	1	1	1	1	1	1338660-1	RAM	44
-	-	-	-	-	-	-	-	-	43
-	-	-	-	-	-	-	-	-	42
-	1	1	1	1	1	1	2-18024-6	SCR,BHC (M8X25) RAM	41
-	-	-	-	-	-	-	-	-	40
-	1	1	1	1	1	1	690125-1	SHIM SUBASSY	39
-	1	1	1	1	1	1	469367-9	SPACER, FINE ADJUST	38
-	1	1	1	1	1	1	879103-3	FINE ADJUST HEAD SUBASSY	37
-	-	-	-	-	-	-	-	-	36
-	-	-	-	-	-	-	-	-	35
-	1	1	1	1	1	1	1320934-1	SUPPORT, TERMINAL	34
-	2	2	2	2	2	2	1-18024-0	SCR,BHC (M4X20) STRIP GUIDE	33
-	1	1	1	1	1	1	18027-2	WASHER, FLAT (M4)	32
-	1	1	1	1	1	1	1-18023-2	SCR,SKT CAP (M4X12) MOUNT BLOCK	31
-	1	1	1	1	1	1	1320908-3	SPACER, STRIP GUIDE	30
-	1	1	1	1	1	1	1633073-1	STRIP GUIDE PLATE ASSY	29
-	1	1	1	1	1	1	455888-3	SPACER, FRONT SHEAR DEP	28
-	2	2	2	2	2	2	1-22284-0	SPRING, DRAG	27
-	1	1	1	1	1	1	356835-1	LEVER, DRAG RELEASE	26
-	1	1	1	1	1	1	240792-1	DRAG, TERMINAL	25
-	1	1	1	1	1	1	1320928-2	PLATE, STRIP GUIDE	24
-	1	1	1	1	1	1	980371-4	SCR,SHC SHLD	23
-	1	-	1	-	1	-	690472-2	STRIPPER	22
-	1	1	1	1	1	1	1-18023-1	SCR,SHC (M4X10) STRIPPER	21
-	2	2	2	2	2	2	18025-2	WASHER, LOCK (M4) STRIPPER	20
-	-	1	-	-	1	-	690472-1	STRIPPER	19
-	-	-	-	-	-	-	-	-	18
-	1	-	-	1	-	-	1338684-1	HOLDER, SHEAR, FRONT (NO-CUT)	17
-	-	-	-	-	-	-	-	-	16
-	-	-	-	-	-	-	-	-	15
-	-	-	-	-	-	-	-	-	14
-	-	-	-	-	-	-	-	-	13
-	1	1	1	1	1	1	5-22280-0	SPRING, SHEAR	12
-	1	1	1	1	1	1	356885-4	STOP, SHEAR	11
-	-	1	1	-	1	1	1320921-1	HOLDER, SHEAR, FRONT (CUT)	10
-	1	1	1	1	1	1	462006-1	SHEAR, FLOAT (FRONT)	9
-	1	2	2	2	1	1	7-1333202-1	ANVIL	8
-	-	-	-	-	-	-	-	-	7
-	-	-	-	-	-	-	-	-	6
-	1	1	1	1	1	1	2-455889-0	DEPRESSOR, SHEAR (FRONT)	5
-	1	1	1	1	1	1	238011-4	SPACER, BLOCK CRIMPER	4
-	1	2	2	2	1	1	9-456135-6	CRIMPER, INSULATION	3
-	1	1	1	1	1	1	455888-4	SPACER, CRIMPER	2
-	1	2	2	2	1	1	1-456403-3	CRIMPER, WIRE	1

REVISION OF EACH ASSY NO (WHEN BLANK, USE DWG REVISION)

QTY	RECD PER ASSY	PARTS LIST	MATL	HT TR	FIN
-	-	-	-	-	-

DO NOT SCALE PRINT.
TOLERANCES UNLESS OTHERWISE SPECIFIED:
1 PLC DEC ±
2 PLC DEC ±
3 PLC DEC ±
ANGLES ±
SURF TEXTURE: ✓
REMOVE BURRS, BREAK SHARP EDGES RO.38 MAX

DR M. CLIFFORD
CHK -
NAME FINE ADJ SIDE FD HD-I APPL
SCALE -
CAGE CODE 00779

15FEB05 APP F.BACKHURST
REL 21MAR03 L.LOFTHOUSE
MACHINE REF HD-I APPL
SHEET 1 OF 1
REV A

AMP Tyco Electronics Harrisburg, PA 17105-3608

1528515
CUSTOMER AND ASSEMBLY DRAWING

THIS DRAWING IS A CONTROLLED DOCUMENT.

LAYOUT L1528515
SET UP GAGE 458637-3

THIS DRAWING IS UNRELEASED.
RELEASING FOR PRODUCTION BY AMP INCORPORATED. ALL RIGHTS RESERVED.