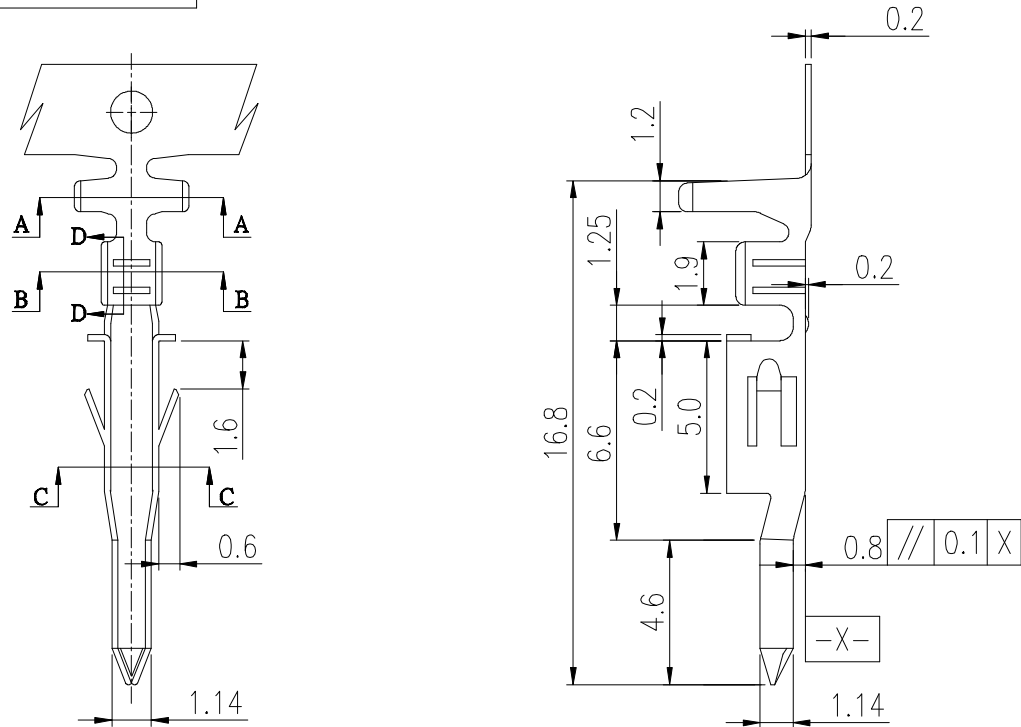


PRODUCT NUMBER
SEE PART NO. TABLE



NOTES:

- MATERIAL: OPTIONAL.
- THIS TERMINAL IS USED WITH FCI PLUG HSG 10127816.
- PRODUCT SPECIFICATION: GS-12-1181.
- PACKAGE SPECIFICATION: GS-14-2362.
- PART NUMBER SCHEME:
10127818- X X X X LF

PLATING TYPE:
P: PRE-PLATED
BLANK: POST-PLATED

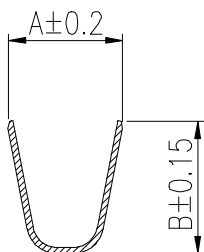
APPLICABLE AWG:
1. AWG #16~#22
2. AWG #24~#28

PLATING CODE:
1: GOLD FLASH
2: TIN

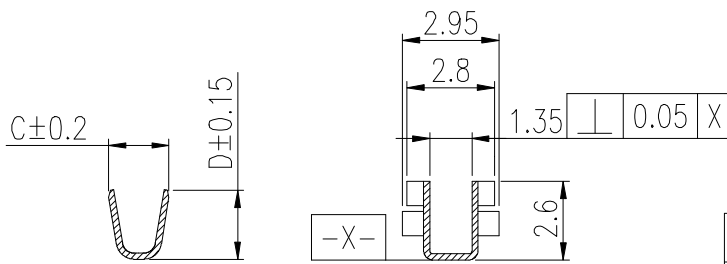
MATERIAL CODE:
1: PHOSPHORUS BRONZE
2: BRASS

6. DIMENSIONAL & PART NO. TABLE:

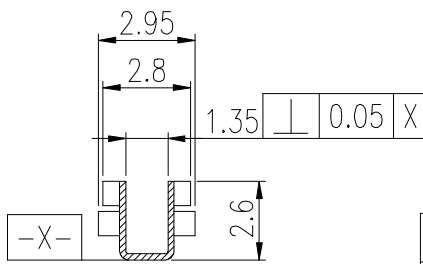
PART NO.	A	B	C	D	APPLICABLE WIRES
10127818-XX2XLF	3.2	3.4	1.8	2.2	#24~#28
10127818-XX1XLF	3.7	4.5	1.8	2.7	#16~#22



SEC A-A



SEC B-B



SEC C-C

mat'l. code		surface		tolerance	projection	product family	
ltr		ecn no	dr	date	tolerances unless otherwise specified		title
A		TAI	2013-11-11		angles	X.X ±0.4	
B	ELX-T-17193	TAI	2014-03-12		flat	X.XX ±0.3	PLUG TERMINAL FOR MINITEK PWR4.2 WIRE CONNECTOR
C	ELX-T-18006	TAI	2014-06-19		fillet	X*±1*	
sheet index		revision	C		scale		dwg no
sheet		1			MM		sheet 1 of 1
					scale		size
					scale		A4
					scale		type
					scale		CUSTOMER Drawing



Mouser Electronics

Authorized Distributor

Click to View Pricing, Inventory, Delivery & Lifecycle Information:

[FCI / Amphenol:](#)

[10127818-222LF](#) [10127818-221LF](#) [10127818-212LF](#) [10127818-112LF](#) [10127818-221PLF](#) [10127818-121PLF](#)
[10127818-212PLF](#) [10127818-112PLF](#) [10127818-211LF](#) [10127818-111PLF](#) [10127818-122LF](#) [10127818-111LF](#)
[10127818-222PLF](#) [10127818-211PLF](#) [10127818-122PLF](#) [10127818-121LF](#)