

PTFE INSULATED TERMINALS & PINS

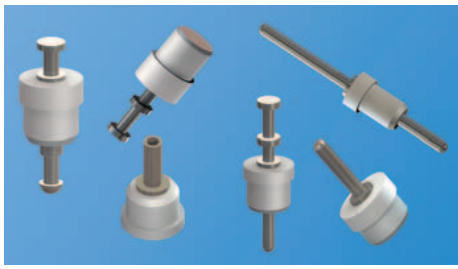
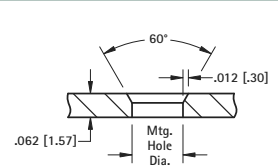
- Space saving design for high density packaging
- Outstanding Electrical, Mechanical, Thermal and Chemical properties
- Provides greater pull-out strength and high torque resistance
- Ideal for high quality terminal and connector applications
- Custom PTFE jacks manufactured to your specifications
- Other platings and bushing colors available upon request

SPECIFICATIONS

Terminal: Brass, Tin Plate

Bushing: White PTFE **RoHS**

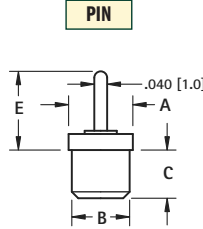
Mounting Detail



PINS



Top Mount

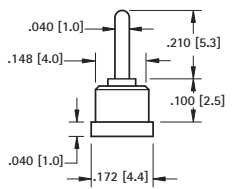


CAT. NO.	A	B	C	E	Mtg. Hole Dia.
11065	.125 (3.2)	.104 (2.6)	.089 (2.3)	.161 (4.1)	.091 (2.3)
11066	.125 (3.2)	.093 (2.4)	.100 (2.5)	.925 (23.5)	.086 (2.2)
11067	.172 (4.4)	.148 (3.8)	.100 (2.5)	.150 (3.8)	.136 (3.5)
11068	.172 (4.4)	.148 (3.8)	.075 (1.9)	.185 (4.7)	
11069	.172 (4.4)	.148 (3.8)	.050 (1.3)	.260 (6.6)	
11070	.172 (4.4)	.148 (3.8)	.075 (1.9)	.260 (6.6)	
11071	.172 (4.4)	.148 (3.8)	.100 (2.5)	.250 (6.4)	
11072	.172 (4.4)	.148 (3.8)	.160 (4.1)	.250 (6.4)	
11073	.172 (4.4)	.148 (3.8)	.100 (2.5)	.490 (12.4)	
11074	.172 (4.4)	.148 (3.8)	.100 (2.5)	.585 (14.9)	

PIN



Bottom Mount



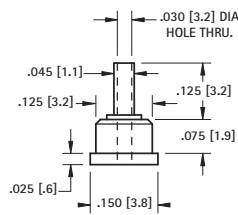
CAT. NO. 11075

Mtg. Hole
.136 (3.5) Dia.

HOLLOW PIN



Bottom Mount



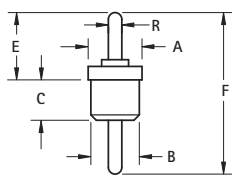
CAT. NO. 11076

Mtg. Hole
.113 (2.9) Dia.

PIN-TO-PIN



Feed-Thru



CAT. NO.	A	B	C	E	F	R	Mtg. Hole Dia.
11150	.093 (2.4)	.075 (1.9)	.100 (2.5)	.315 (8.0)	.550 (13.9)	.030 (7.6)	.069 (1.8)
11151	.125 (3.2)	.093 (2.4)	.100 (2.5)	.196 (5.0)	.453 (11.5)	.040 (1.0)	.086 (2.2)
11152	.125 (3.2)	.093 (2.4)	.100 (2.5)	.250 (6.4)	.515 (13.1)	.040 (1.0)	
11153	.125 (3.2)	.093 (2.4)	.100 (2.5)	.250 (6.4)	.443 (11.3)	.040 (1.0)	
11154	.150 (3.8)	.125 (3.2)	.100 (2.5)	.250 (6.4)	.443 (11.3)	.040 (1.0)	
11155	.172 (4.4)	.148 (3.8)	.100 (2.5)	.250 (6.4)	.515 (13.1)	.040 (1.0)	
11156	.172 (4.4)	.148 (3.8)	.110 (2.8)	.260 (6.6)	.535 (13.6)	.040 (1.0)	
11157	.172 (4.4)	.148 (3.8)	.250 (6.4)	.250 (6.4)	.710 (18.0)	.040 (1.0)	
11158	.172 (4.4)	.148 (3.8)	.250 (6.4)	.303 (7.7)	.719 (18.3)	.040 (1.0)	
11159	.172 (4.4)	.148 (3.8)	.160 (4.1)	.250 (6.4)	.725 (18.4)	.040 (1.0)	
11160	.172 (4.4)	.148 (3.8)	.170 (4.3)	.250 (6.4)	.830 (16.0)	.040 (1.0)	

SOLDER TERMINALS



Top Mount

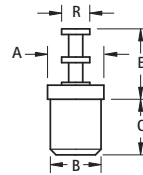


FIG. 1

TURRET

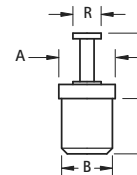


FIG. 2



Bottom Mount

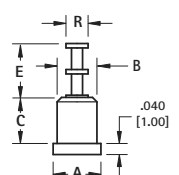


FIG. 3

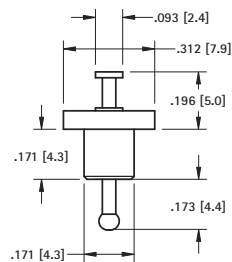
CAT. NO.	FIG.	A	B	C	E	R	Mtg. Hole Dia.
11300	1	.125 (3.2)	.093 (2.4)	.100 (2.5)	.210 (5.3)	.060 (1.5)	.086 (2.2)
11301	1	.125 (3.2)	.093 (2.4)	.080 (2.0)	.250 (6.4)	.080 (2.0)	.086 (2.2)
11302	1	.125 (3.2)	.093 (2.4)	.100 (2.5)	.250 (6.4)	.080 (2.0)	.086 (2.2)
11303	1	.172 (4.4)	.148 (3.8)	.140 (3.6)	.194 (4.9)	.093 (2.4)	.136 (3.5)
11304	1	.172 (4.4)	.148 (3.8)	.110 (2.8)	.250 (6.4)	.080 (2.0)	.136 (3.5)
11305	1	.172 (4.4)	.148 (3.8)	.125 (3.2)	.303 (7.7)	.080 (2.0)	.136 (3.5)
11306	1	.172 (4.4)	.148 (3.8)	.165 (4.2)	.290 (7.4)	.093 (2.4)	.136 (3.5)
11307	1	.172 (4.4)	.148 (3.8)	.250 (6.4)	.290 (7.4)	.093 (2.4)	.136 (3.5)
11308	1	.172 (4.4)	.148 (3.8)	.165 (4.2)	.437 (11.1)	.093 (2.4)	.136 (3.5)
11320	2	.172 (4.4)	.148 (3.8)	.100 (2.5)	.150 (3.8)	.080 (2.0)	.136 (3.5)
11321	2	.187 (4.8)	.165 (4.2)	.150 (3.8)	.370 (9.4)	.090 (2.3)	.152 (3.9)
11322*	2	.150 (3.8)	.125 (3.2)	.110 (2.8)	.180 (4.6)	.090 (2.3)	.113 (2.9)
11310	3	.125 (3.2)	.093 (2.4)	.100 (2.5)	.170 (4.3)	.060 (1.5)	.086 (2.2)
11311	3	.172 (4.4)	.148 (3.8)	.100 (2.5)	.210 (5.3)	.080 (2.0)	.136 (3.5)
11312	3	.187 (4.8)	.171 (4.3)	.155 (3.9)	.210 (5.3)	.080 (2.0)	.158 (4.0)

*Hollow Turret

TURRET-TO-TURRET



Feed-Thru

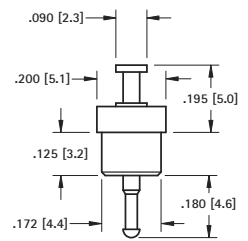


CAT. NO. 11250

Mtg. Hole
.158 (4.0) Dia.



Feed-Thru



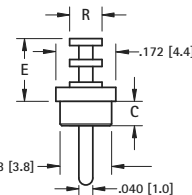
CAT. NO. 11251

Mtg. Hole
.158 (4.0) Dia.

TURRET-TO-PIN



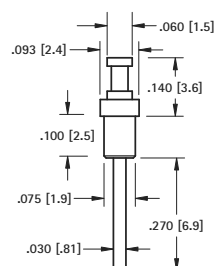
Feed-Thru



CAT. NO.	C	E	R	Mtg. Hole Dia.
11216	.100 (2.5)	.250 (6.4)	.080 (2.0)	.136 (3.5)
11217	.230 (5.8)	.375 (9.5)	.093 (2.4)	.136 (3.5)



Feed-Thru



CAT. NO. 11218

Mtg. Hole
.066 (1.7) Dia.

SPLIT-TYPE FORK TURRETS

SPECIFICATIONS

Terminal: Brass, Tin Plate
Bushing: White PTFE **RoHS**

FORK

FORK-TO-TURRET

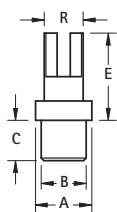


FIG. 1

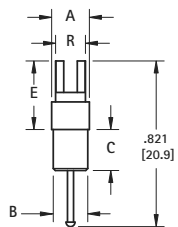


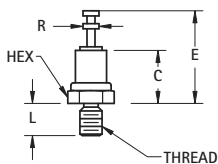
FIG. 2

CAT. NO.	FIG. NO.	A	B	C	E	R	Mtg. Hole Dia.
11100	1	.172 (4.4)	.148 (3.8)	.125 (3.2)	.250 (6.4)	.125 (3.2)	.136 (3.5)
11111	1	.187 (4.8)	.171 (4.3)	.150 (3.8)	.390 (9.9)	.148 (3.8)	.158 (4.0)
11112	1	.187 (4.8)	.171 (4.3)	.150 (3.8)	.453 (11.5)		
11113	1	.187 (4.8)	.171 (4.3)	.150 (3.8)	.328 (8.3)		
11114	1	.187 (4.8)	.171 (4.3)	.150 (3.8)	.390 (9.9)		
11115	1	.187 (4.8)	.171 (4.3)	.150 (3.8)	.453 (11.5)		
11116	2	.187 (4.8)	.171 (4.3)	.212 (5.4)	.390 (9.9)		

THREADED TURRET TERMINALS

SPECIFICATIONS

Terminal: Brass, Tin Plate
Bushing: White PTFE **RoHS**



CAT. NO.	Thread	Hex	C	E	L	R
11350	2-56	.156 (3.9)	.206 (5.2)	.360 (9.1)	.125 (3.2)	.062 (1.6)
11351	4-40	.250 (6.4)	.270 (6.9)	.510 (12.9)	.250 (6.4)	.094 (2.4)
11352	6-32	.250 (6.4)	.270 (6.9)	.510 (12.9)	.375 (9.5)	.094 (2.4)

TEST POINT JACKS

SPECIFICATIONS

Terminal Jack: Beryllium Copper (QQ-C-533)

Plating: Gold per MIL-G-45204, Type II

Bushing: White PTFE **RoHS** (RoHS Compliant)

Red or Black PTFE **RoHS** (Non-RoHS Compliant)

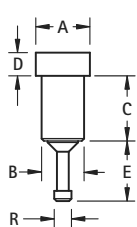


FIG. 1

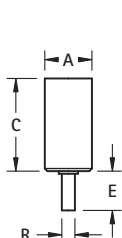


FIG. 2

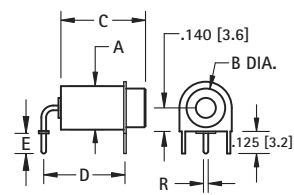


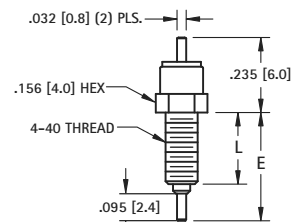
FIG. 3

RoHS			NON-RoHS			FIG.	A	B	C	D	E	R	Probe Dia. ± .001 (.03)	Probe Length
White	Red	Black	CAT NO.	CAT NO.	CAT NO.									
11001	11001-R	11001-B	1	.142 (3.6)	.120 (3.0)	.244 (6.2)	.046 (1.2)	.120 (3.0)	.060 (1.5)	.040 (1.0)	.205 (5.2)			
11002	11002-R	11002-B	1	.142 (3.6)	.120 (3.0)	.283 (7.2)	.046 (1.2)	.120 (3.0)	.060 (1.5)	.040 (1.0)	.245 (6.2)			
11003	11003-R	11003-B	1	.172 (4.4)	.140 (3.6)	.142 (3.6)	.050 (1.3)	.060 (1.5)	.080 (2.0)	.040 (1.0)	.125 (3.2)			
11004	11004-R	11004-B	1	.172 (4.4)	.148 (3.8)	.179 (4.5)	.046 (1.2)	.120 (3.0)	.060 (1.5)	.040 (1.0)	.140 (3.6)			
11005	11005-R	11005-B	1	.218 (5.5)	.185 (4.7)	.301 (7.6)	.050 (1.3)	.105 (2.7)	.125 (3.2)	.080 (2.0)	.315 (8.0)			
11006	11006-R	11006-B	1	.218 (5.5)	.185 (4.7)	.271 (6.9)	.046 (1.2)	.120 (3.0)	.074 (1.9)	.080 (2.0)	.195 (4.9)			
11007	11007-R	11007-B	1	.218 (5.5)	.185 (4.7)	.271 (6.9)	.046 (1.2)	.120 (3.0)	.074 (1.9)	.090 (2.3)	.195 (4.9)			
11008	11008-R	11008-B	1	.218 (5.5)	.185 (4.7)	.301 (7.6)	.046 (1.2)	.120 (3.0)	.074 (1.9)	.080 (2.0)	.225 (5.7)			
11009	11009-R	11009-B	1	.218 (5.5)	.185 (4.7)	.400 (10.2)	.050 (1.3)	.187 (4.8)	.074 (1.9)	.080 (2.0)	.280 (7.1)			
11010	11010-R	11010-B	1	.218 (5.5)	.185 (4.7)	.271 (6.9)	.046 (1.2)	.136 (3.5)	.074 (1.9)	.080 (2.0)	.340 (8.6)			
11011	11011-R	11011-B	2	.218 (5.5)	-	.430 (10.9)	-	.150 (3.8)	.050 (1.3)	.080 (2.0)	.200 (5.1)			
11012	11012-R	11012-B	2	.218 (5.5)	-	.500 (12.7)	-	.150 (3.8)	.050 (1.3)	.080 (2.0)	.280 (7.1)			
11013	11013-R	11013-B	3	.218 (5.5)	.187 (4.8)	.689 (17.5)	.500 (12.7)	.125 (3.2)	.050 (1.3)	.080 (2.0)	.500 (12.7)			
11014	11014-R	11014-B	3	.218 (5.5)	.187 (4.8)	.378 (9.6)	.400 (10.2)	.125 (3.2)	.050 (1.3)	.080 (2.0)	.250 (6.4)			
11015	11015-R	11015-B	3	.218 (5.5)	.187 (4.8)	.378 (9.6)	.400 (10.2)	.187 (4.7)	.035 (.89)	.080 (2.0)	.250 (6.4)			
11016	11016-R	11016-B	3	.218 (5.5)	.187 (4.8)	.378 (9.6)	.500 (12.7)	.125 (3.2)	.050 (1.3)	.080 (2.0)	.250 (6.4)			

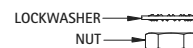
THREADED FEED-THRU TERMINALS

SPECIFICATIONS

Terminal: Brass, Tin Plate
Bushing: White PTFE **RoHS**
Body: Brass, Nickel Plate



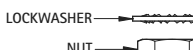
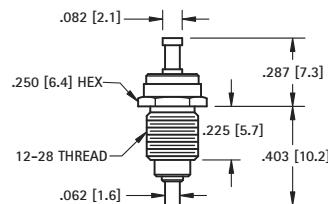
CAT. NO.	E	L
11360	.355 (9.0)	.200 (5.1)
11361	.405 (10.3)	.250 (6.4)



Nut and washer supplied unassembled

SPECIFICATIONS

Terminal: Brass, Tin Plate
Bushing: White PTFE **RoHS**
Body: Brass, Nickel Plate

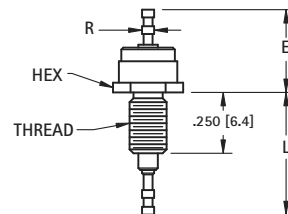


Nut and washer supplied unassembled

CAT. NO. 11362

SPECIFICATIONS

Terminal: Brass, Tin Plate
Bushing: White PTFE **RoHS**
Body: Brass, Nickel Plate



Nut and washer supplied unassembled

CAT. NO.	Thread	Hex	E	L	R
11363	10-32	.312 (7.9)	.425 (10.8)	.565 (14.3)	.062 (1.6)
11364	6-32	.188 (4.8)	.368 (9.3)	.510 (12.9)	.040 (1.0)