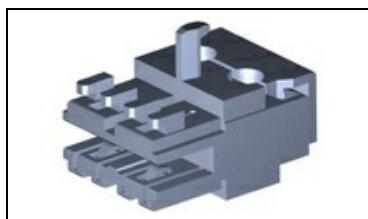




1534415-2 Product Details

[Share](#) | [Print](#) | [Email](#)


1534415-2

TE Internal Number: 1534415-2

Active

[View 3D PDF](#)

2.5mm & 5mm Centerline Connector System (AMP DUOPLUG)

Always EU RoHS/ELV Compliant (Statement of Compliance)

Product Highlights:

- Connector
- 5.00 mm Centerline
- Connector Assembly
- Connector Style = Receptacle
- Contact Type = Socket

[View all Features](#)
Quick Links

- ▶ [Pricing & Availability](#)
- ▶ [Search for Tooling](#)
- ▶ [Product Feature Selector](#)
- ▶ [Contact Us About This Product](#)

[Add to My Part List](#) | [Request Sample](#) | [Find Similar Products](#) | [Buy Product](#)

Documentation & Additional Information

Product Drawings:

- [AMP DUOPLUG POWER FEMALE CONNECTOR \(STANDARD VERSION\)](#) (PDF, English)

Catalog Pages/Data Sheets:

- [1654742_HOUSEHOLD_APPLIANCES_RAST5](#) (PDF, English)

Product Specifications:

- None Available

Application Specifications:

- None Available

Instruction Sheets:

- None Available

CAD Files: (CAD Format & Compression Information)

- [2D Drawing](#) (DXF, Version D)
- [3D Model](#) (IGES, Version D)
- [3D Model](#) (STEP, Version D)

[List all Documents](#)
Additional Information:

- [Product Line Information](#)

Related Products:

- [Tooling](#)

Feedback

Product Features (Please use the Product Drawing for all design activity)

Product Type Features:

- Product Type = Connector
- Connector Type = Connector Assembly
- Wire/Cable Type = Stranded
- Wire Size (mm² [AWG]) = 0.35-0.5² [22-20]
- Wire Insulation Diameter (mm [in]) = 2.20 [0.087]

Termination Features:

- Termination Method to Wire/Cable = Insulation Displacement Crimp (IDC)

Body Features:

- Selectively Loaded = No
- Keying Between Cavity Number(s) = R2.5 / P-2-

Contact Features:

- Contact Type = Socket
- Contact Base Material = Copper Tin
- Contact Plating, Mating Area, Material = Tin

Housing Features:

- Centerline (mm [in]) = 5.00 [0.197]
- Connector Style = Receptacle
- Housing Material = PA6

Configuration Features:

- [Number of Positions](#) = 2

Industry Standards:

- [RoHS/ELV Compliance](#) = RoHS compliant, ELV compliant
- [Lead Free Solder Processes](#) = Not relevant for lead free process
- RoHS/ELV Compliance History = Always was RoHS compliant
- UL Flammability Rating = UL 94V-2

Conditions for Usage:

- [Applies To](#) = Wire/Cable
- For Use With = Tab Header, PCB Frame

Operation/Application:

- Industry Application = Appliances

Packaging Features:

- Packaging Quantity = 3,850

Other:

- Brand = AMP

Corporate Information

[About TE](#)
[Investors](#)
[News Room](#)
[Supplier Portal](#)
[Careers](#)
[Terms & Conditions](#)
[Privacy Policy](#)
[AODA Accessibility Policy](#)
[AODA Multi-Year Accessibility Plan](#)

Quick Links

[Distributor Inventory](#)
[Product Cross Reference](#)
[Documents & Drawings](#)
[Product Compliance Support Center](#)
[Site Map](#)

Customer Support

[Email or Chat With Us](#)
[Find a Phone Number](#)
[Knowledge Base](#)
[Manage Your Account](#)

Keep Me Informed