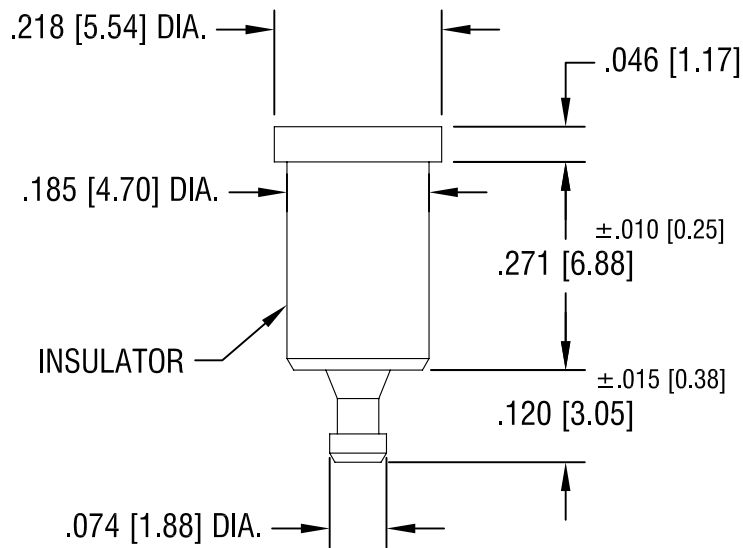
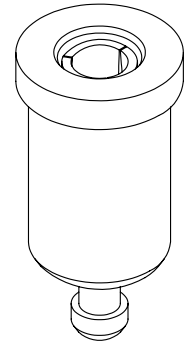
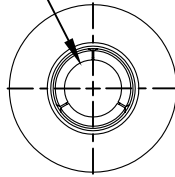


THIS DOCUMENT IS THE PROPERTY OF
KEYSTONE ELECTRONICS CORP. AND
SHALL NOT BE REPRODUCED, DISTRIBUTED
OR USED AS A BASIS FOR MANUFACTURE
WITHOUT PRIOR WRITTEN PERMISSION
FROM KEYSTONE ELECTRONICS CORP.

SPRING CONTACT TO
ACCEPT .080[2.03]
PIN DIA.



PART NO.	COLOR
11006	WHITE
11006-R	RED
11006-B	BLACK

NOTES:

1. TERMINAL JACK : MAT'L - BERYLLIUM COPPER (QQ-C-533)
2. BUSHING: MAT'L - PTFE

KEYSTONE ELECTRONICS CORP.

ASTORIA, N.Y. 11105-2017

PART NAME			PTFE INSULATED TEST JACK		
MATERIAL			AS NOTED		
FINISH		DRN BY	DATE		
GOLD PLATE		N.T.	7.10.07		
		APP'D	SCALE		
		LN	4X		
TOLERANCES		INCH	[MM]	CODE	
DECIMAL		± .005	[± 0.15]	DWG NO.	
ANGULAR		± 1°		C/M	
UNLESS OTHERWISE SPECIFIED				11006-	

11.17.08	CHANGE AS PER ECN 08-177	A
DATE	DESCRIPTION	REV.

Mouser Electronics

Authorized Distributor

Click to View Pricing, Inventory, Delivery & Lifecycle Information:

[Keystone Electronics:](#)

[11006-R](#)