


# SAC-3P-M12MR/BI-1L-S

Order No.: 1534135



<http://eshop.phoenixcontact.de/phoenix/treeViewClick.do?UID=1534135>

Valve connector type B, 11 mm contact spacing, horizontal connector M12

Commercial data	
GTIN (EAN)	4  046356 026499
sales group	D123
Pack	5 pcs.
Customs tariff	85444290
Catalog page information	Page 173 (PC-2011)

### Product notes

WEEE/RoHS-compliant since:  
04/01/2006



<http://www.download.phoenixcontact.com>  
Please note that the data given here has been taken from the online catalog. For comprehensive information and data, please refer to the user documentation. The General Terms and Conditions of Use apply to Internet downloads.

## Technical data

General data	
Rated current at 40°C	4 A
Rated voltage	24 V AC/DC
Number of positions	3
Volume resistance	≤ 15 mΩ
Insulation resistance	≥ 100 MΩ

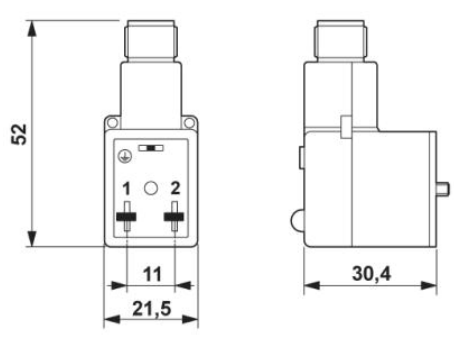
Ambient temperature (operation)	-25 °C ... 85 °C (valve plug)
<b>General characteristics</b>	
Standards/regulations	M12 connector IEC 61076-2-101
Coding	A - standard
Surge voltage category	II
Pollution degree	3
Degree of protection	IP67
Insertion/withdrawal cycles	≥ 100
Torque	0.4 Nm (M12 connector)
Contact material	CuSn
Contact surface material	Ni/Au
Contact carrier material	TPU GF
Contact material	CuSn
Contact surface material	Ag
Valve plug contact insert material	PBT
Material, housing, valve plug	PBT
Material, knurls	Zinc die-cast, nickel-plated
Sealing material	TPU
Connection method	M12 male connector
Status display	Yellow LED
Protective circuit/component	Z diode
<b>Conductor data</b>	
Cable type	PUR/PVC black
Conductor cross section	0.75 mm <sup>2</sup>
AWG signal line	18
Conductor structure signal line	24x 0.20 mm
External cable diameter	5.90 mm
Wire colors	Black 1, black 2, green/yellow
External sheath, color	Black RAL 9005

**Accessories**

Item	Designation	Description
<b>Connecting cables</b>		
1402559	SAC-3P-M12MS/1,5-PUR/M12FS 345	Sensor/Actuator cable, 3-position, Plug, straightLink:M12, A-coded, on Socket, straight M12, A-coded, Cable length: 1.5 m
1402562	SAC-3P-M12MS/10,0-PUR/M12FS 345	Sensor/Actuator cable, 3-position, Plug, straightLink:M12, A-coded, on Socket, straight M12, A-coded, Cable length: 10 m
1402563	SAC-3P-M12MS/15,0-PUR/M12FS 345	Sensor/Actuator cable, 3-position, Plug, straightLink:M12, A-coded, on Socket, straight M12, A-coded, Cable length: 15 m
1402560	SAC-3P-M12MS/3,0-PUR/M12FS 345	Sensor/Actuator cable, 3-position, Plug, straightLink:M12, A-coded, on Socket, straight M12, A-coded, Cable length: 3 m
1402561	SAC-3P-M12MS/5,0-PUR/M12FS 345	Sensor/Actuator cable, 3-position, Plug, straightLink:M12, A-coded, on Socket, straight M12, A-coded, Cable length: 5 m

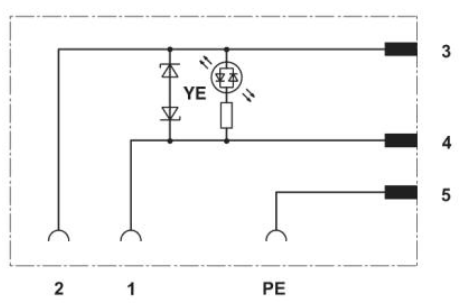
**Diagrams/Drawings**

Dimensioned drawing



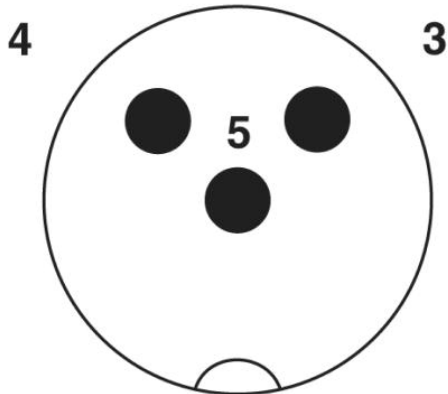
Valve connector, type BI with horizontal M12 plug

Circuit diagram

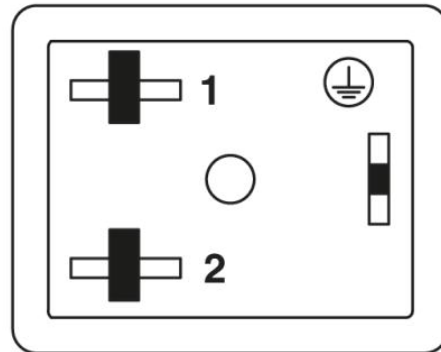


Schematic diagram

---



Pin assignment M12 plug, 3-pos., A-coded, view male side



Valve connector pin assignment, type BI

**Address**

PHOENIX CONTACT Inc., USA  
586 Fulling Mill Road  
Middletown, PA 17057, USA  
Phone (800) 888-7388  
Fax (717) 944-1625  
<http://www.phoenixcon.com>



© 2011 Phoenix Contact  
Technical modifications reserved;