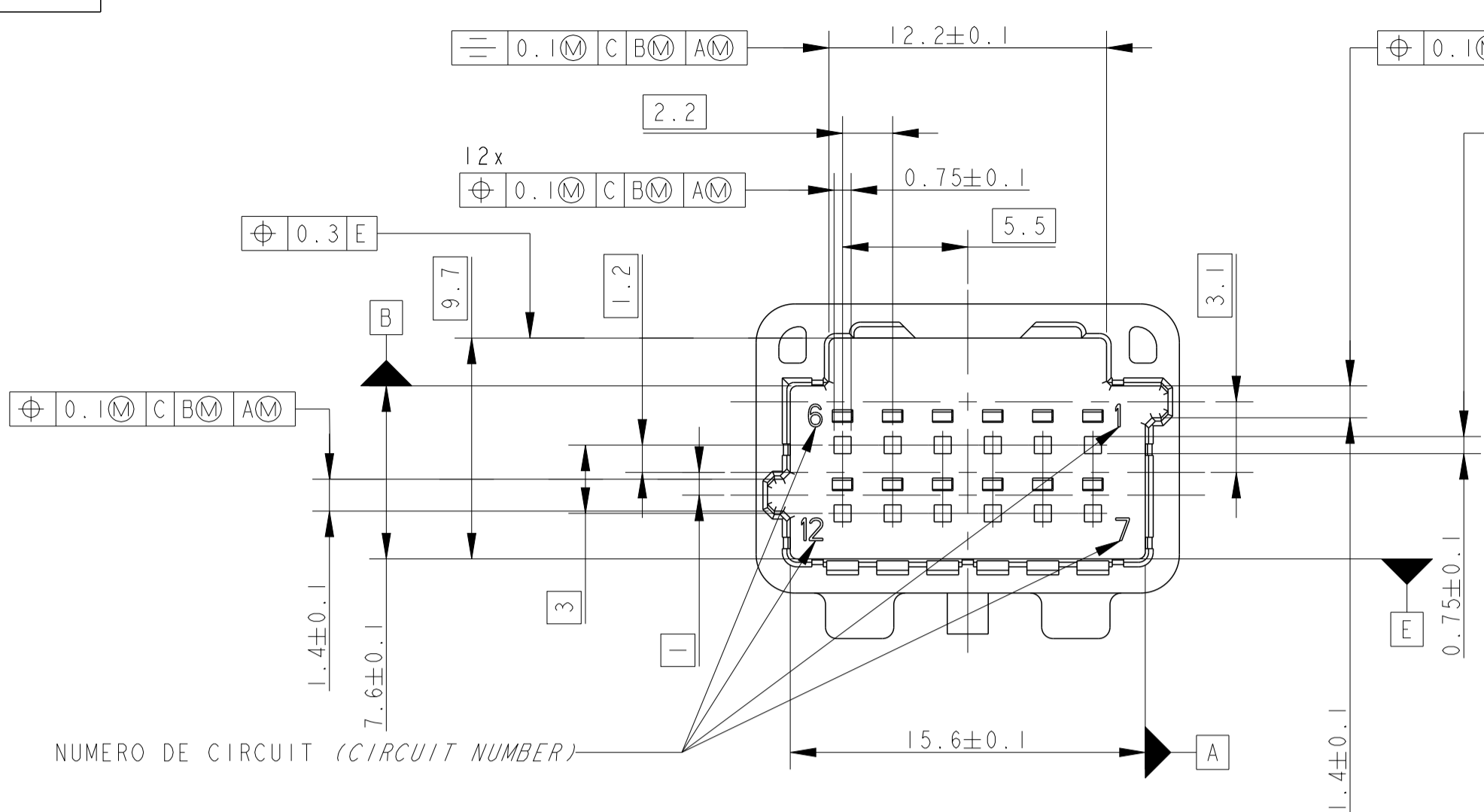
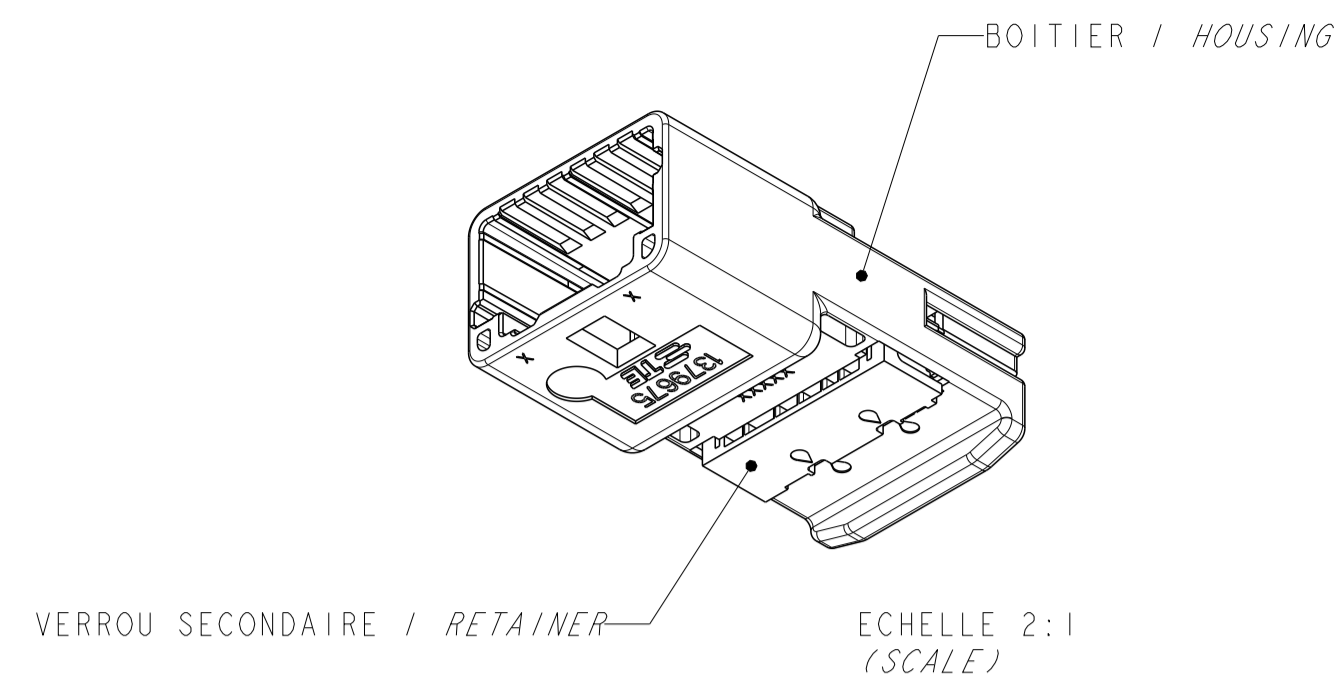
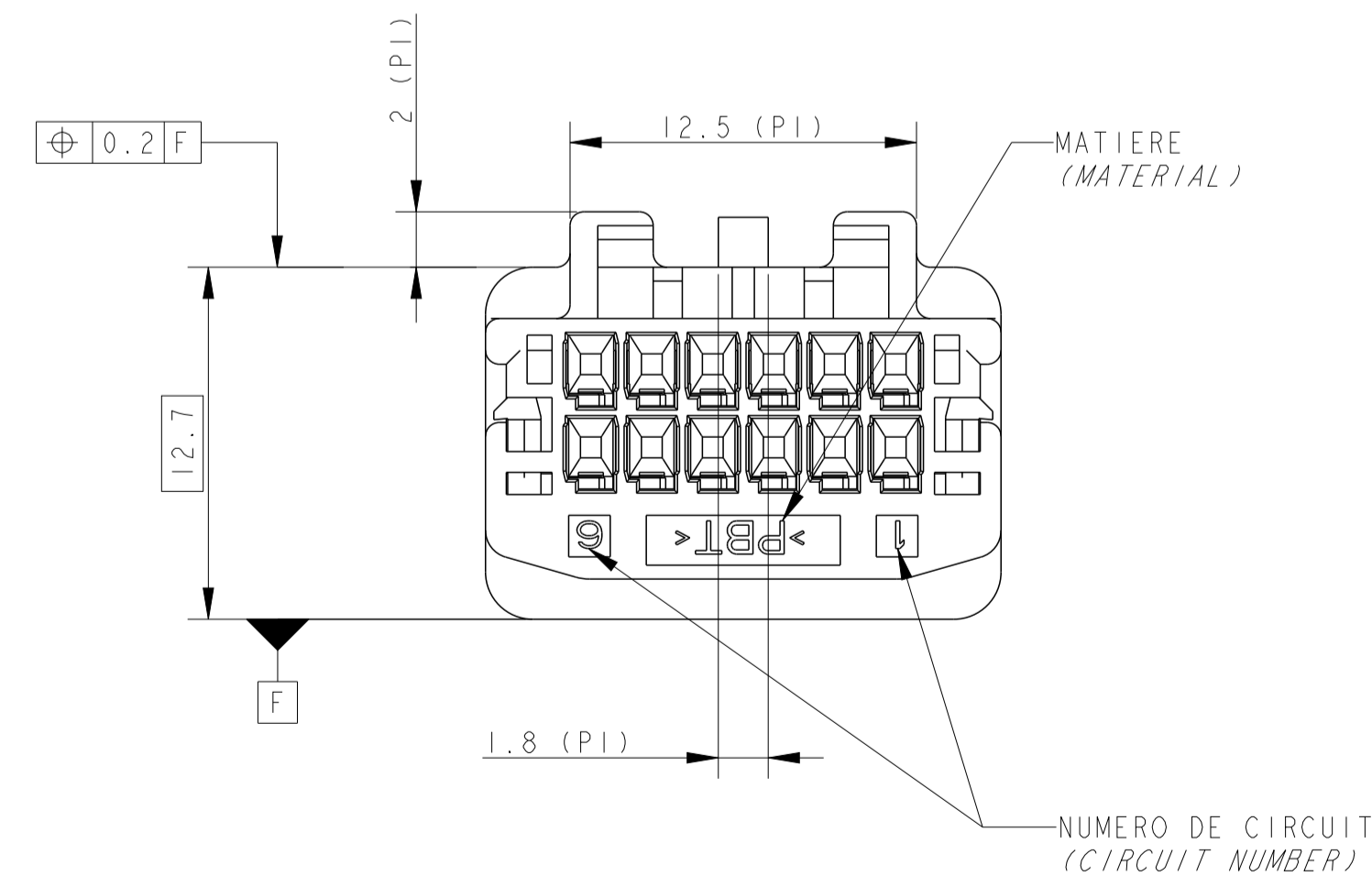
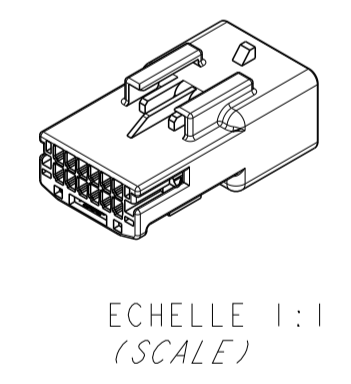
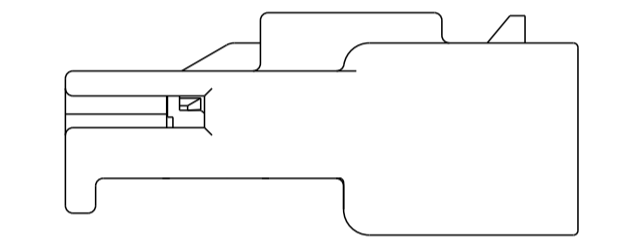
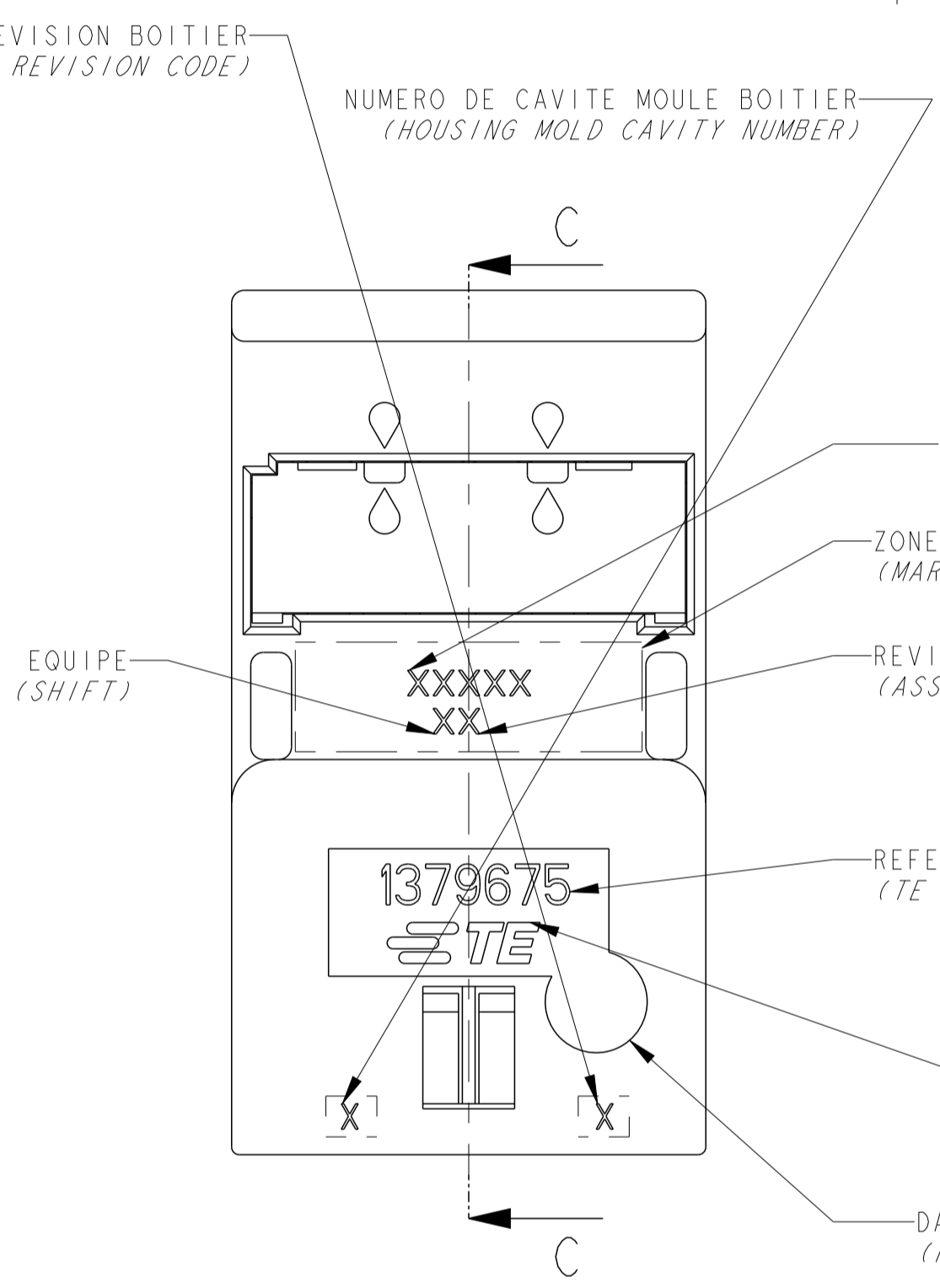
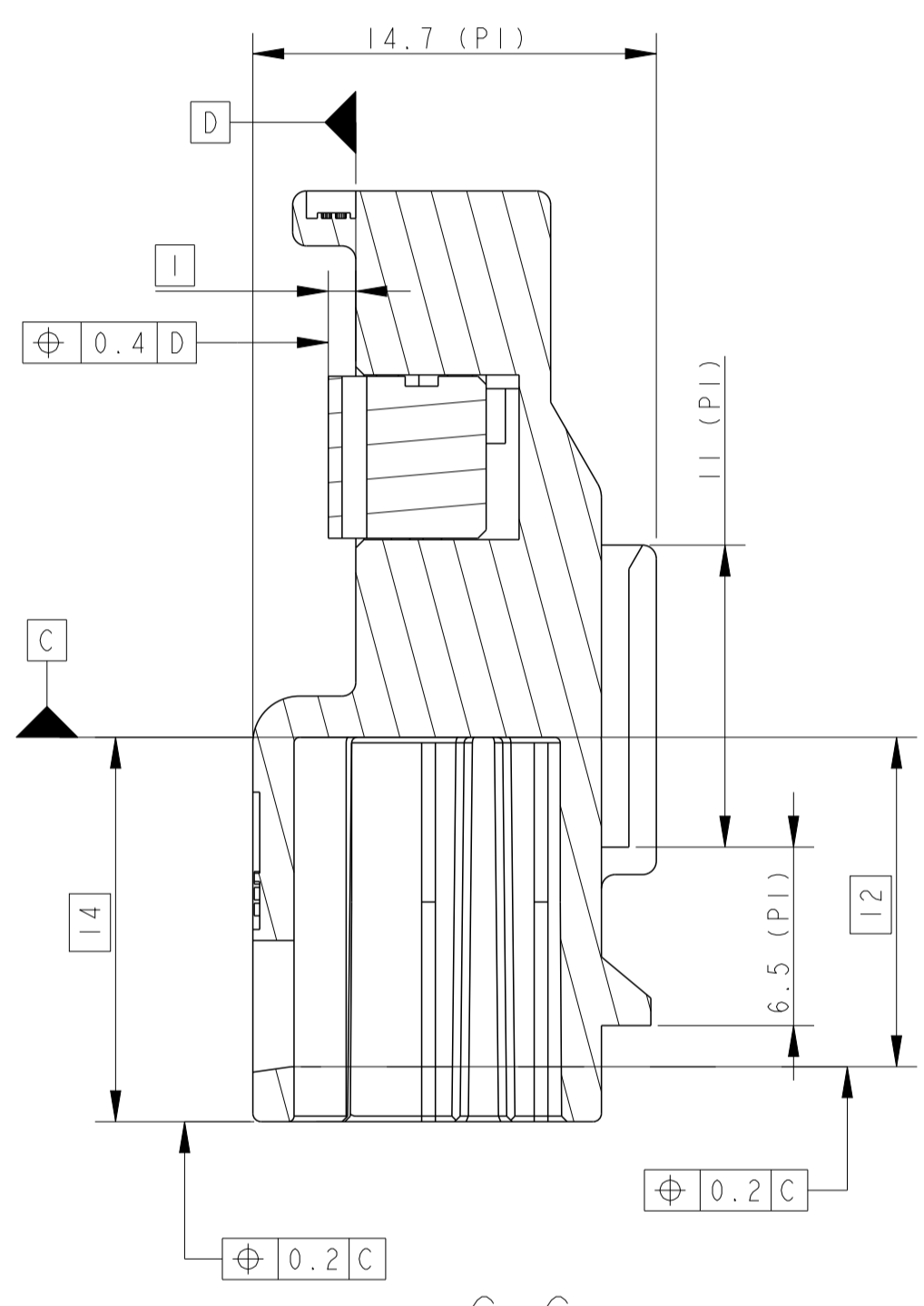
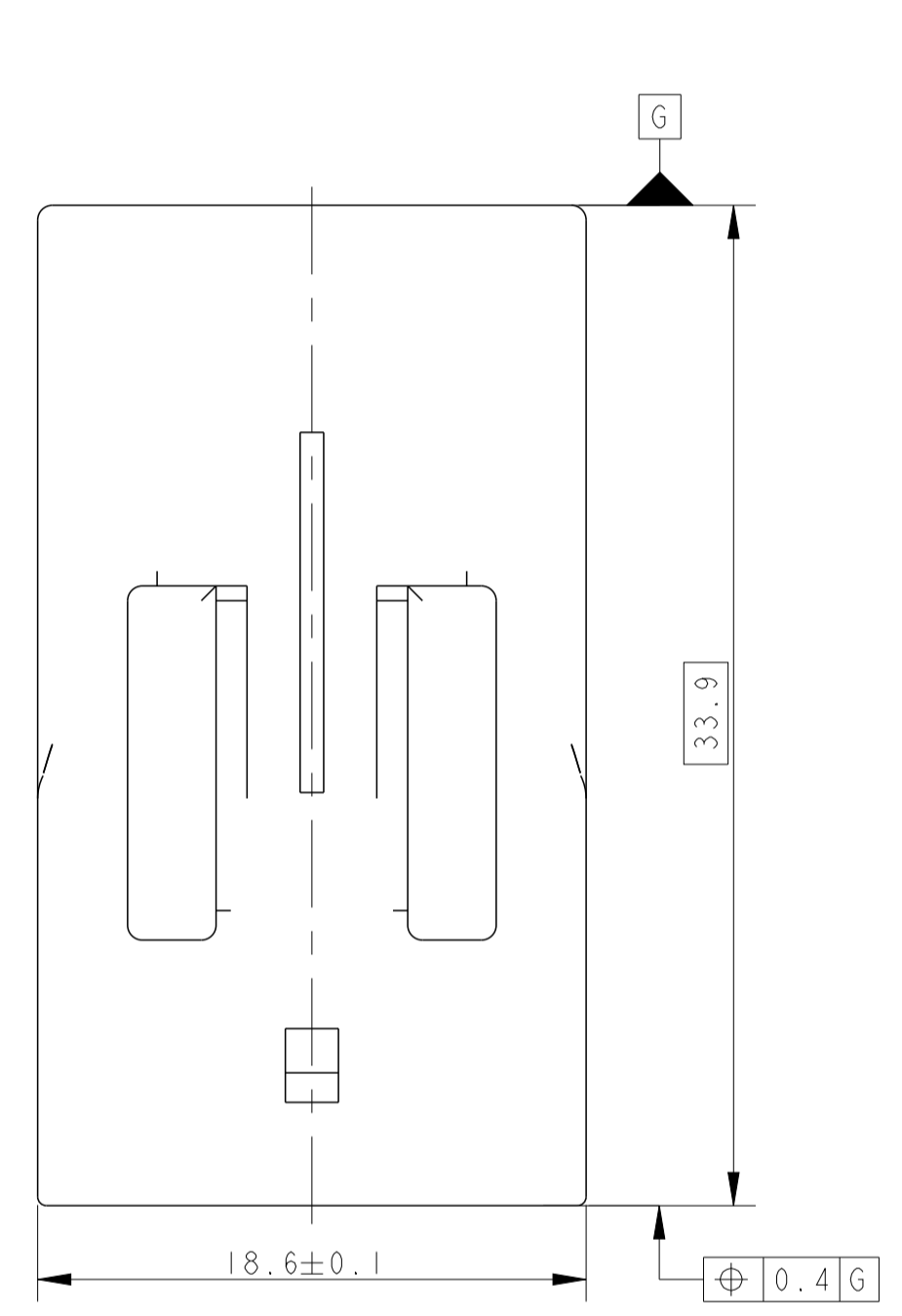


LOC		DIST		REVISIONS				
P	LTN	REV	DESCRIPTION	DATE	DWN	APPV		
	A		AJOUT DE NOUVELLES REFERENCES	11AUG2011	PB	JPP		
	B		CORRECTION OF VUES FOR CODING -3 AND -4	31JUL2013	DB	JPP		



NOTES : LES NOTES LOCALES SONT ENTRE <->
SPECIFICATIONS DE REFERENCE :
2 SPECIFICATION TE : 108-15299
4 PLAN D'INTERFACE TE : 1379776
NOTES COMPLEMENTAIRES :
12 CAHIER DE PRECONISATION : 411-15672
13 REFERENCE REPRESENTEE : 1379675-1
14 VERROU SECONDAIRE PREVERROUILLE (POSITION PREFERENTIELLE DE LIVRAISON). SI LE VERROU N'EST PAS DANS CETTE POSITION, SUIVRE LES INSTRUCTIONS DE LA NOTICE TECHNIQUE TE 411-15672 §8.2
PI POUR INFORMATION

LOCALE NOTES ARE BETWEEN <->
APPLICABLE SPECIFICATION :
TE SPECIFICATION (SEE BEFORE)
TE INTERFACE DRAWING (SEE BEFORE)
ADDITIONAL NOTES :
INSTRUCTION SHEET : (SEE BEFORE)
PART NUMBER SHOWN (SEE BEFORE)
SECONDARY LOCK IN PRELOCKED POSITION (PREFERRED DELIVERY POSITION). IF SECONDARY LOCKING IS NOT IN THIS POSITION, FOLLOW INSTRUCTIONS OF TE SPECIFICATION 411-15672 §8.2
FOR REFERENCE ONLY



CONTACTS ASSOCIES (APPLIED CONTACTS)		
REF TE (TE PN)	FINITION (FINISH)	DESIGNATION (DESIGNATION)
1674742-1	ETAME (TINNED)	LANGUETTE .635 (.635 TAB) 0.35 A 0.5 MM ² (SOMM)

1379675-5	CONNECTEUR 12 VOIES / 12 WAY CONNECTOR	5	PBT-PBT / PBT-PBT	NATUREL-NATUREL / NATURAL-NATURAL	A
1379675-4	CONNECTEUR 12 VOIES / 12 WAY CONNECTOR	4	PBT-PBT / PBT-PBT	VERT-NATUREL / GREEN-NATURAL	A
1379675-3	CONNECTEUR 12 VOIES / 12 WAY CONNECTOR	3	PBT-PBT / PBT-PBT	BLEU-NATUREL / BLUE-NATURAL	A
1379675-2	CONNECTEUR 12 VOIES / 12 WAY CONNECTOR	2	PBT-PBT / PBT-PBT	GRIS-NATUREL / GREY-NATURAL	A
1379675-1	CONNECTEUR 12 VOIES / 12 WAY CONNECTOR	1	PBT-PBT / PBT-PBT	NOIR-NATUREL / BLACK-NATURAL	A
REF TE / TE PN	DESCRIPTION / DESCRIPTION	CODAGE / KEYING	MATIERE BOITIER - MATIERE VERROU SECONDAIRE / HOUSING MATERIAL - RETAINER MATERIAL	COULEUR BOITIER - COULEUR VERROU SECONDAIRE / HOUSING COLOR - RETAINER COLOR	REVISION ASSEMBLAGE / ASSEMBLY REVISION CODE

THIS DRAWING IS A CONTROLLED DOCUMENT. CE PLAN EST UN DOCUMENT CONTROLÉ PAR STS ELECTRONICS - IL EST SOUSCRIPTIBLE ET TOUTE MODIFICATION DOIT ÊTRE ÉLECTRONIQUEMENT SUIVIE PAR LE SERVICE TECHNIQUE DE STS ELECTRONICS POUR S'ASSURER LA BONA FIDE DU DOCUMENT.

D. BANCE
B. DUPONT

29OCT2002
04NOV2002

TE Connectivity

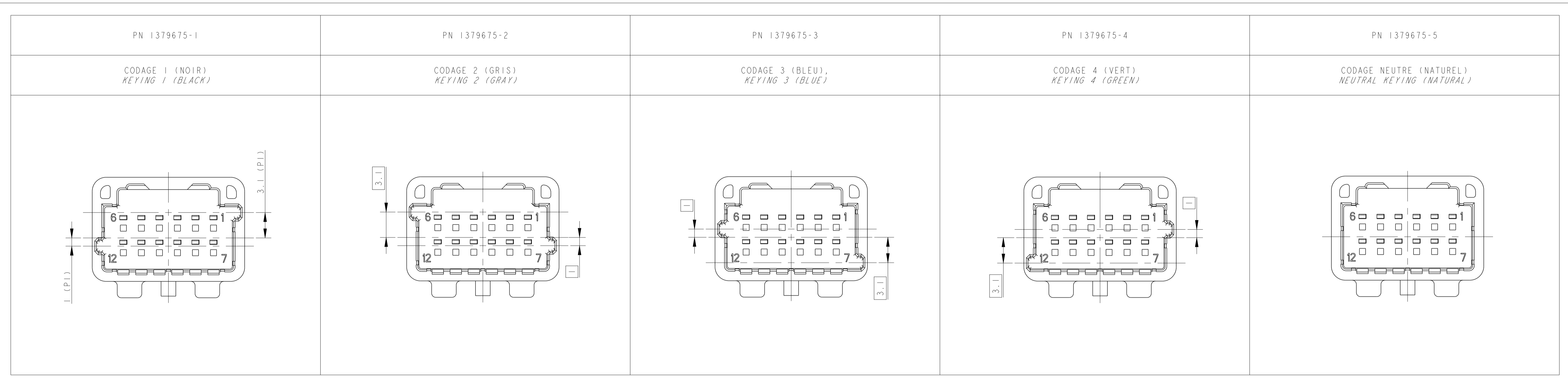
025 TH 12 POS TAB HOUSING

00779-1379675

Customer Drawing / PLAN CLIENT UNIFORMEMENT POUR REFERENCE

SCALE 4:1 SHEET 1 OF 2 REV B

LOC	DIST	REVISIONS					
F	00	P	LTN	DESCRIPTION	DATE	DWN	APVD
		REV		MODIFICATIONS		DESS.	APP.
		-		SEE SHEET 1		-	-



THIS DRAWING IS A CONTROLLED DOCUMENT. CE PLAN EST UN DOCUMENT CONTROLÉ PAR TYSO ELECTRONICS - IL EST SOUSCRIPTION À TOUTE MODIFICATION. CONSERVER LE SERVICE TECHNIQUE DE TYSO ELECTRONICS POUR OBTENIR LA DERNIÈRE RÉVISION.		DWN / REVISION: 29OCT2002 D. BANCE CHK / RÉVISÉ: 04NOV2002 B. DUPONT	TE Connectivity
DIMENSIONS: mm 	TOLERANCES UNLESS OTHERWISE SPECIFIED: TOLERANCES NON SPECIFIÉES: S'IL Y A DE DÉCIMALES: 0 P.L.C./DEC. ± 1 P.L.C./DEC. ± 2 P.L.C./DEC. ±0.2 3 P.L.C./DEC. ± 4 P.L.C./DEC. ± ANGLES ±5°	APVD / APPROUVÉ: 04NOV2002 JP. PICAUD PRODUCT SPEC: SPEC. PRODUCT: SEE TABLE APPLICATION SPEC: SPEC. APPLICATION: SEE TABLE WEIGHT / MASSE APPROX.: -	
MATERIAL / MATIÈRE: SEE TABLE	FINISH / FINITION: -	SIZE / FORMAT: A1 CAGE CODE / NO. PLAN: 00779 DRAWING NO. / NO. PLAN: 1379675	RESTRICTED TO / RÉSERVÉ À: - Customer Drawing / PLAN CLIENT UNIFORMITY / ÉCHELLE: 4:1 SHEET / FEUILLE: 2 OF 2 REV B