

Lightweight yet strong, constructed of aircraft grade aluminum. Batteries snap-fit securely into clips.

- Brass Eyelets, Nickel Plate
- Brass Lugs, Nickel Plate
- Moisture Proof, Resin Impregnated, Fibre Insulating Washers
- Aluminum 2024-T3, Frame & Clip



## ALUMINUM BATTERY HOLDERS

**FIG. 1**



1 CELL

**FIG. 2**



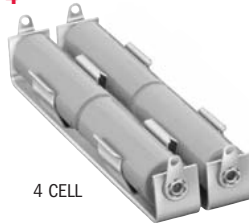
2 CELL

**FIG. 3**

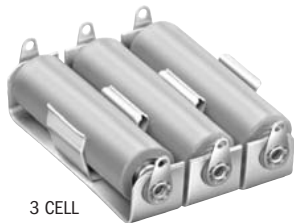


2 CELL

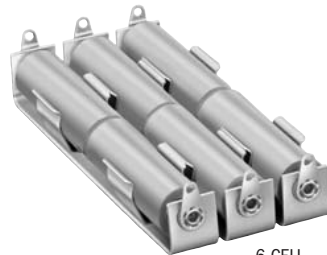
**FIG. 4**



4 CELL



3 CELL



6 CELL  
CAT. NO. 193  
CAT. NO. 197  
CAT. NO. 201



4 CELL

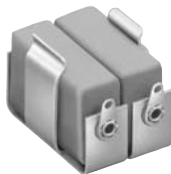


6 CELL  
CAT. NO. 205

**FIG. 5**



**FIG. 6**



CAT. NO.	HOLDS NO. OF CELLS	FIG. NO.	BATTERY CROSS REFERENCE			
			EVEREADY	DURACELL	RAY-O-VAC	NEDA
<b>“AAA” CELL HOLDERS</b>			( BATTERY SIZE .375 (9.5) O.D. x 1.673 (42.5) L )			
137	1	1	E92, 912, CH12	M24F, MN2400	824	24A, 24F, 24P
138	2	3				
169	3	3				
170	4	3				
<b>“AA” CELL HOLDERS</b>			( BATTERY SIZE .531 (13.4) O.D. x 1.906 (48.4) L )			
139	1	1	E9, EV15, EN91, CH15, E133, E133N, E177, 505, 523, 1015, 1215	ZM9, RM12R, NC15AA, M15F, M15AA, TR133R, TR177, M505, MN1500, PC1500	5AA, 615, 815, 7AA	15, 15A, 15C, 15D, 15F, 15M, 15NC, 221, 1101M, 1113M, 1306AP, 1306M, 1314M, 1606M
140	2	3				
171	3	3				
182	4	3				
189	2	2				
192	4	4				
193	6	4				
<b>“C” CELL HOLDERS</b>			( BATTERY SIZE .875 (22.2) O.D. x 1.875 (47.6) L )			
173	1	1	CH35, E93, 935, 1235, EV35, EN93	M14F, M14HD, NC14C, TR286, MN1400, PC1400	1C, 614, 814,	14A, 14C, 14D, 14F, 14NC, 1600M
174	2	3*				
185	2	2				
187	3	3				
196	4	4**				
197	6	4				
<b>“D” CELL HOLDERS</b>			( BATTERY SIZE 1.187 (30.1) O.D. x 2.312 (58.7) L )			
175	1	1	CH50, E95, 950, 1250, EV50, EN95	M13F, NC13D, S42, M13HD, TR289, MN1300, PC1300	2D, 6D, 613, 813	13A, 13C, 13D, 13F, 13NC, 1115M, 1810M
176	2	3*				
190	3	3				
186	2	2				
200	4	4**				
201	6	4				
205	6	4***				
<b>“N” CELL HOLDERS</b>			( BATTERY SIZE .375 (9.5) O.D. x 1.110 (28.2) L )			
154	1	1	E90, E340E, E401E, EP401, EP401E	MP401H	R401, RP401, 810	910A, 910F, 910M, 1117M, 1118M, MN9100
155	2	3				
156	3	3				
<b>“9 VOLT” BATTERY HOLDERS</b>						
203-P	REFER TO PAGE 21		CH22, EN22, E146X, 216, 522, 1222, E303396	TR146X, M1604, M1604HD, MN16, PC146X,	A1604, D1604, 1604	1604A, 1604C, 1604D, 1604M, 1604NC, 1619M
303-P						
1290†						
1290-79						
1291†						
1291-79						
<b>LITHIUM “2/3A” CELL HOLDER</b>						
131	1	1	–	DL-2/3A	BR-2/3A	CR-173355E
<b>“15 VOLT” BATTERY HOLDERS</b>						
161	1	5	–	–	–	224
163	1	5	411	–	–	208
167	2	6*				
<b>“22½ VOLT” BATTERY HOLDERS</b>						
139	1	1	505	–	–	221
168	1	5	420	–	–	225
177	1	5	M215	M215	–	215
178	2	6*				
<b>“30 VOLT” BATTERY HOLDERS</b>						
183	1	5	413	–	–	210
184	1	6*				

\* 1 Clip holds two batteries in place. \*\* 2 Clips hold four batteries in place. \*\*\* 3 Clips hold six batteries in place. † Recommended for battery thickness under .640 (16.3)

### MODIFICATIONS

We welcome the opportunity to quote on variations of standard items. Use our engineering service for your custom-built holders. Holders with PC and Quick-Fit terminals available on special order.