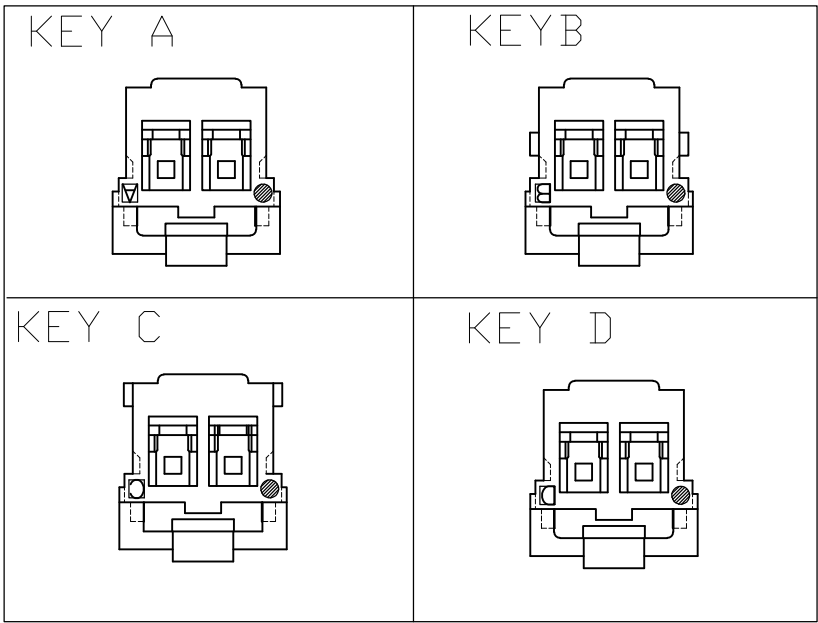
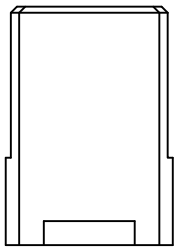


LOC	DIST	REVISIONS					
		P	LTR	DESCRIPTION	DATE	DWN	APVD
ES	—		E	REVISED	11JUN2008	L.J	Z.J

D

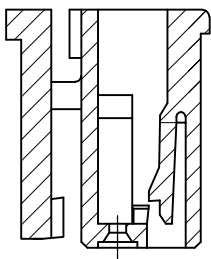
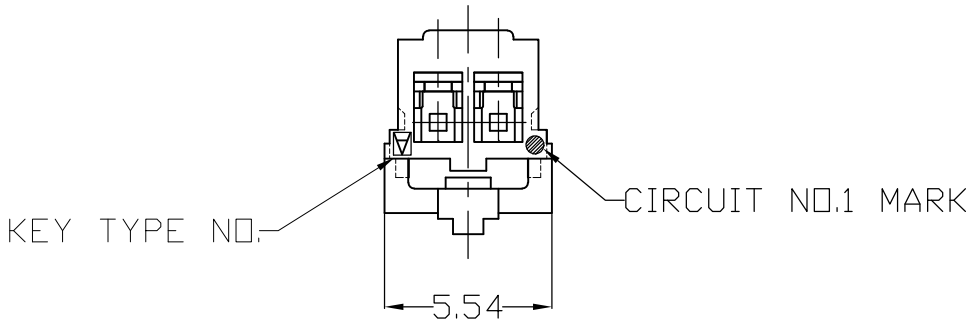
(2 POS.)



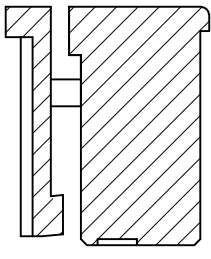
NOTE:
1. GENERAL TOLERANCE: ± 0.3 , $\pm 3^\circ$
2. MATERIAL: 66NYLON GF(UL94V-0)
3. MATING CONN. P/N: SEE TABLE
4. APPLICABLE CONTACT P/N:

1971031-1

C

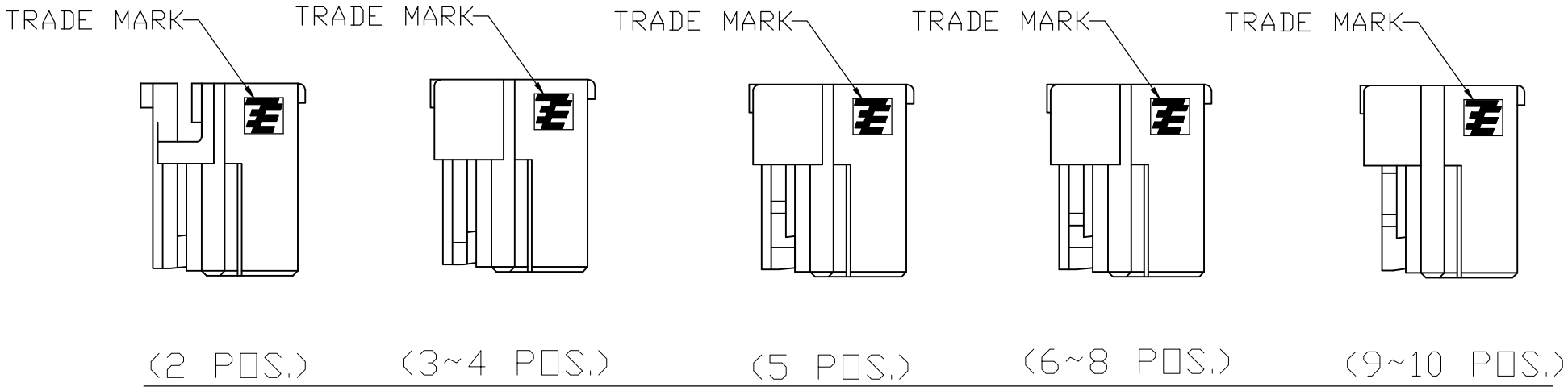
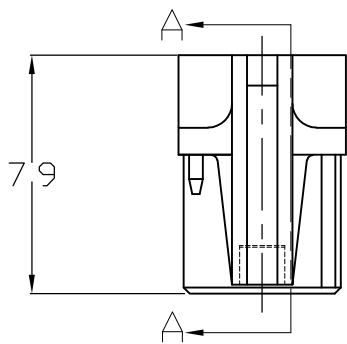
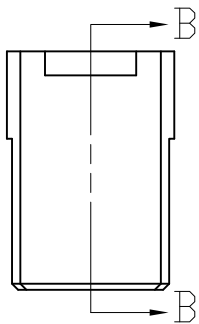


SEC. B-B

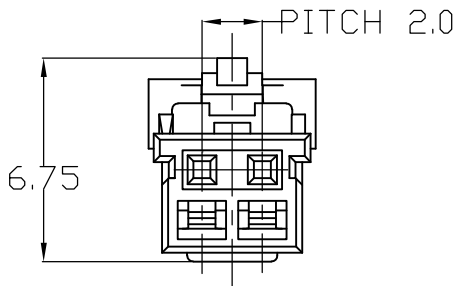




SEC. D-D

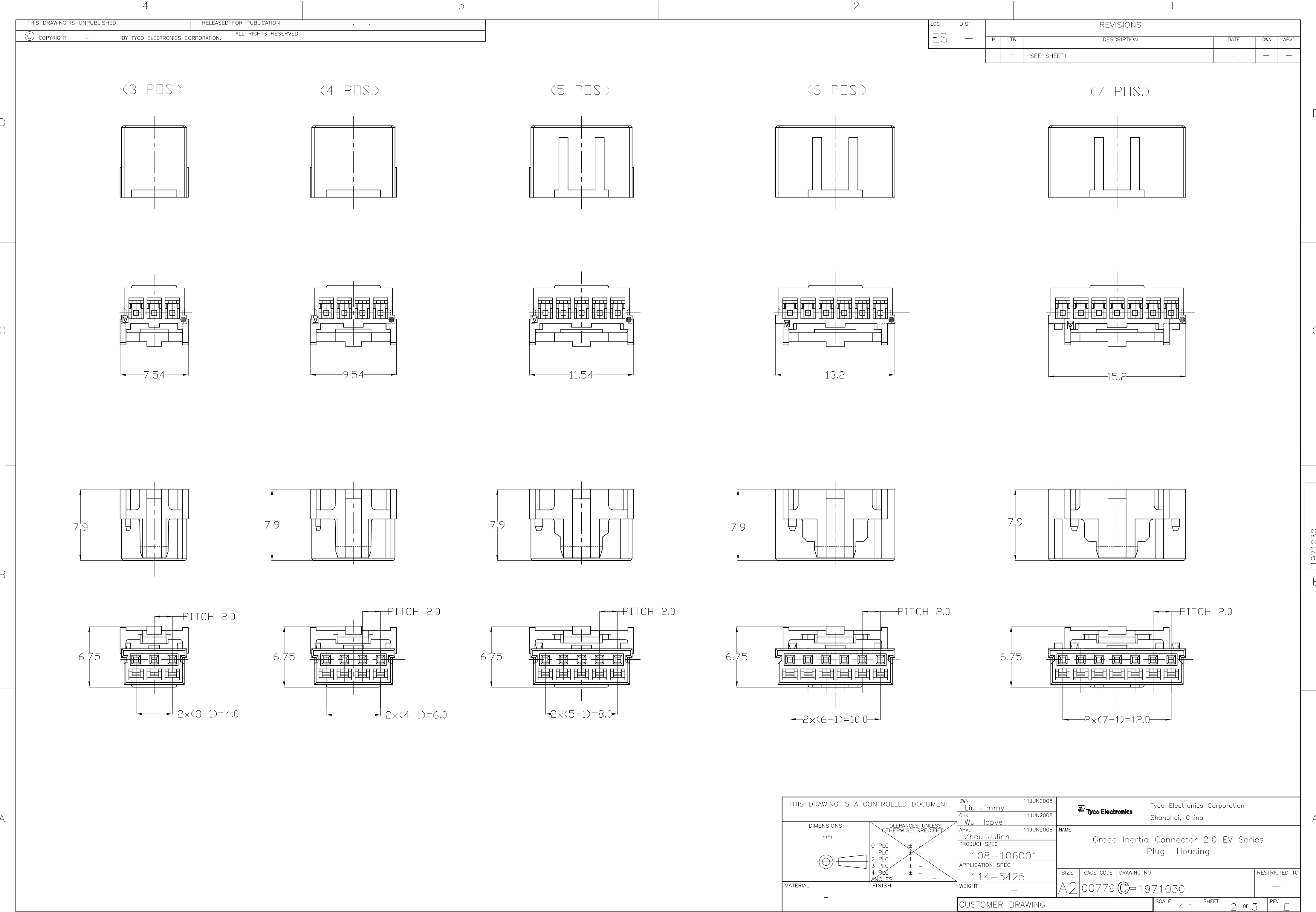
B



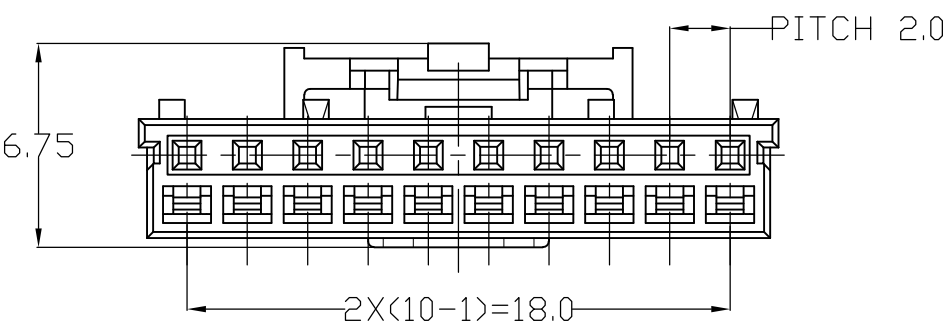
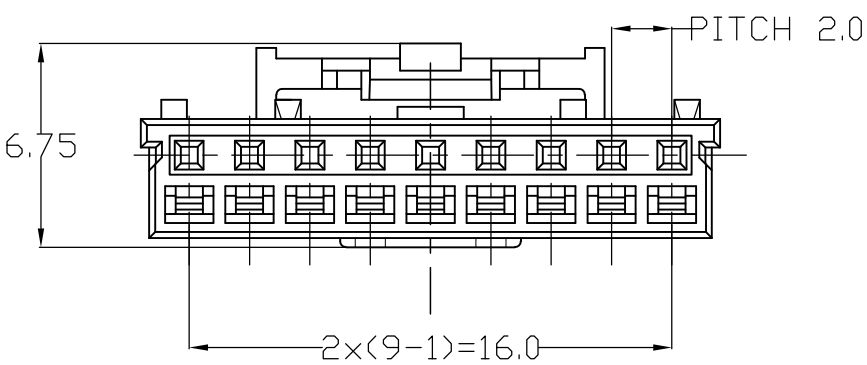
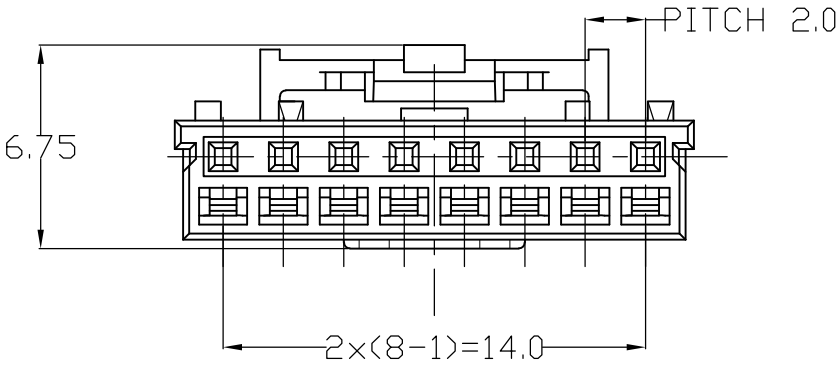
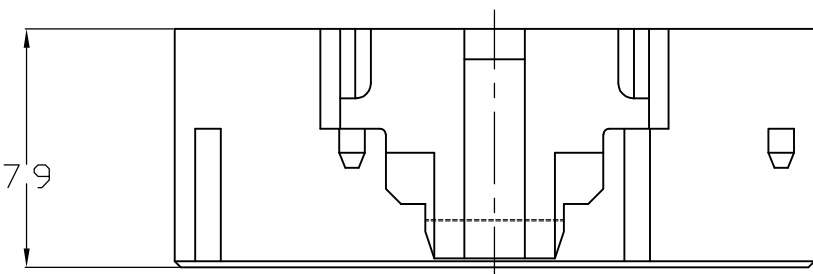
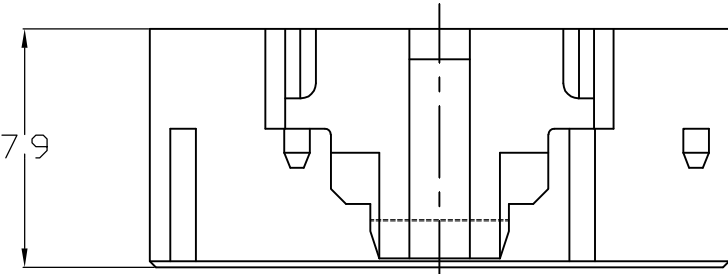
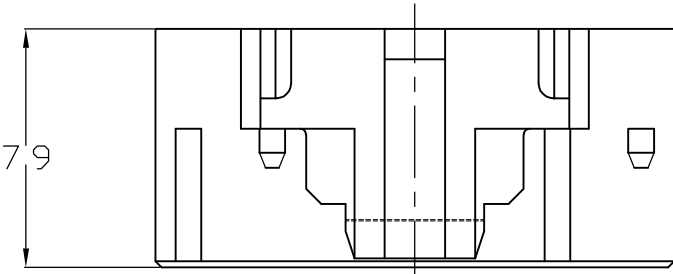
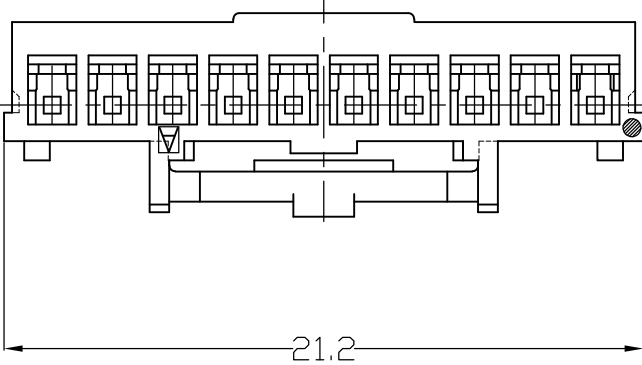
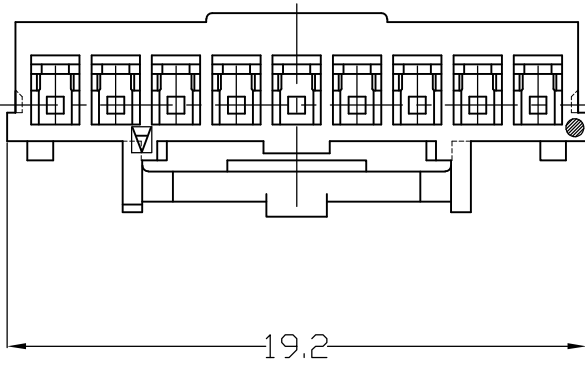
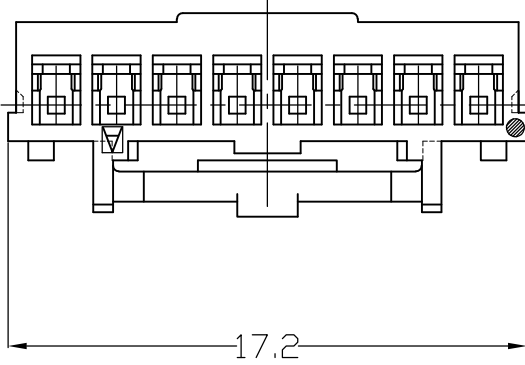
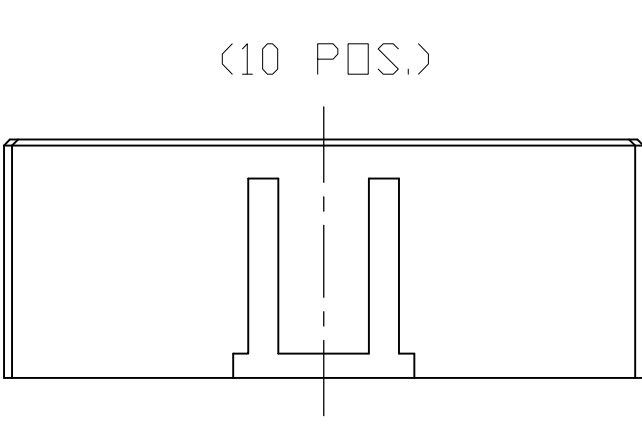
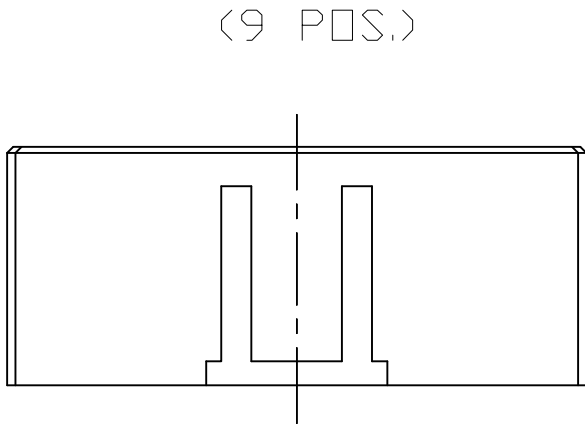
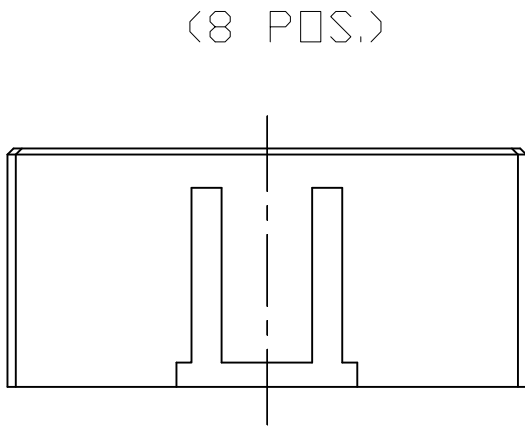
A



THIS DRAWING IS A CONTROLLED DOCUMENT.		DWN Liu Jimmy	11JUN2008	 Tyco Electronics Corporation Shanghai, China			
DIMENSIONS: mm		CHK Wu hapye	11JUN2008				
		APVD Zhou Julian	11JUN2008	NAME Grace Inertia Connector 2.0 EV Series Plug Housing			
		PRODUCT SPEC 108-106001					
MATERIAL SEE NOTE		APPLICATION SPEC 114-5425		SIZE A2	CAGE CODE 00779	DRAWING NO C=1971030	RESTRICTED TO —
		FINISH —		WEIGHT —	SCALE 4:1		
CUSTOMER DRAWING				SCALE 4:1	SHEET 1 of 3	REV E	



LOC	DIST	REVISIONS					
		P	LTR	DESCRIPTION	DATE	DWN	APVD
ES	—						
			—	SEE SHEET 1	—	—	—



3-1971032-1	D	YELLOW	10	3-1971030-1
2-1971032-1	C	BLUE		2-1971030-1
1-1971032-1	B	RED		1-1971030-1
1971032-1	A	NATURAL		1971030-1
3-1971032-9	D	YELLOW	9	3-1971030-9
2-1971032-9	C	BLUE		2-1971030-9
1-1971032-9	B	RED		1-1971030-9
1971032-9	A	NATURAL		1971030-9
3-1971032-8	D	YELLOW	8	3-1971030-8
2-1971032-8	C	BLUE		2-1971030-8
1-1971032-8	B	RED		1-1971030-8
1971032-8	A	NATURAL		1971030-8
3-1971032-7	D	YELLOW	7	3-1971030-7
2-1971032-7	C	BLUE		2-1971030-7
1-1971032-7	B	RED		1-1971030-7
1971032-7	A	NATURAL		1971030-7
3-1971032-6	D	YELLOW	6	3-1971030-6
2-1971032-6	C	BLUE		2-1971030-6
1-1971032-6	B	RED		1-1971030-6
1971032-6	A	NATURAL		1971030-6
3-1971032-5	D	YELLOW	5	3-1971030-5
2-1971032-5	C	BLUE		2-1971030-5
1-1971032-5	B	RED		1-1971030-5
1971032-5	A	NATURAL		1971030-5
3-1971032-4	D	YELLOW	4	3-1971030-4
2-1971032-4	C	BLUE		2-1971030-4
1-1971032-4	B	RED		1-1971030-4
1971032-4	A	NATURAL		1971030-4
3-1971032-3	D	YELLOW	3	3-1971030-3
2-1971032-3	C	BLUE		2-1971030-3
1-1971032-3	B	RED		1-1971030-3
1971032-3	A	NATURAL		1971030-3
3-1971032-2	D	YELLOW	2	3-1971030-2
2-1971032-2	C	BLUE		2-1971030-2
1-1971032-2	B	RED		1-1971030-2
1971032-2	A	NATURAL		1971030-2
MATING CONNECTOR	KEY TYPE	COLOR	POS.	PART NUMBER
PART NUMBER				

THIS DRAWING IS A CONTROLLED DOCUMENT.

DIMENSIONS:
mm

MATERIAL
SEE NOTE

TOLERANCES UNLESS OTHERWISE SPECIFIED:

0 PLC	±	-
1 PLC	±	-
2 PLC	±	-
3 PLC	±	-
4 PLC	±	-
ANGLES	±	-
FINISH	-	-

DWN
Liu Jimmy
11JUN2008

CHK
Wu Sam
11JUN2008

APVD
Zhou Julian
11JUN2008

PRODUCT SPEC
108-106001

APPLICATION SPEC
114-5425

WEIGHT
-

CUSTOMER DRAWING

Tyco Electronics Corporation
Shanghai, China

NAME
Grace Inertia Connector 2.0 EV Series
Plug Housing

SIZE
A2

CAGE CODE
00779

DRAWING NO
C=1971030

RESTRICTED TO
-

SCALE
4:1

SHEET
3 of 3

REV
E

Mouser Electronics

Authorized Distributor

Click to View Pricing, Inventory, Delivery & Lifecycle Information:

[TE Connectivity:](#)

[1-1971030-2](#)