



Copyright FCI



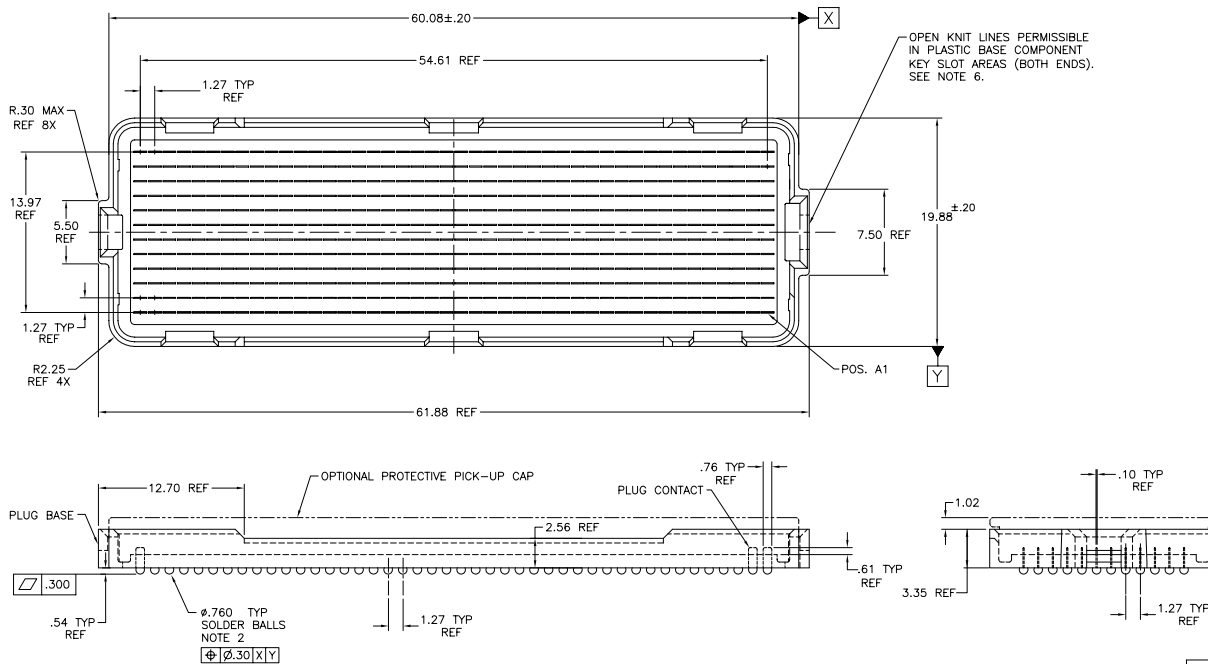
FCIconnect.com



1 | 2

3

4



CONFIDENTIAL

mat'l. code				surface		tolerance	
SEE NOTE 1				ASME Y14.5		ASME Y14.5	
ltr	ecn no	dr	date	tolerances unless otherwise specified			
A	V03-1102	LP	10/20/03	angles dr enqr chr appd	feature tolerance	X ±.3	
B	V04-0940	VS	10/13/04			XX ±.10	
C	V06-0560	LP	2006/07/10			XXX ±.050	
				dr	D.INGRAM	02/05/03	
				enqr	D.WHITING	02/05/03	
				chr	D.WHITING	02/05/03	
				appd	D.WHITING	02/05/03	
sheet index	revision sheet	C	C	C			
		1	2	3			



form: A4mmXLC

1

2

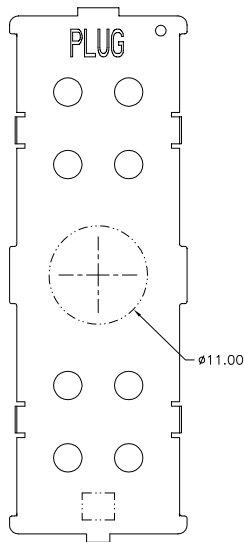
3

4

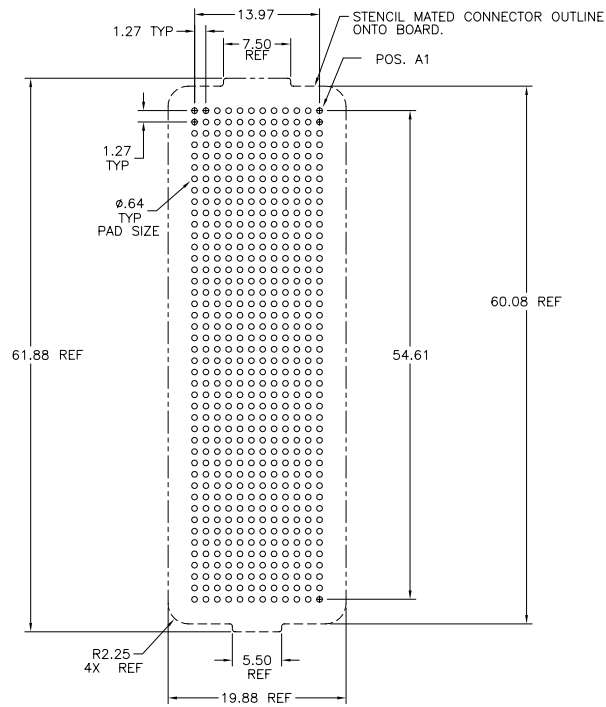
PDM: Rev:C

STATUS:Released

Printed: Feb 12, 2011



VACUUM AREA
FOR OPTIONAL
PICK UP CAP



BOARD PATTERN
SCALE 2/1

mat'l. code	SEE NOTE 1	surface	ASME Y14.5	tolerance	ASME Y14.5	projection	product family
thr	ecn no	dr	date	tolerances unless otherwise specified			MEG-Array
c				angles	X *3 XX *10 XXX *050	MM scale 1:1	title
				dr	D.INGRAM	02/05/03	0mm PLUG. ASSY
				enqr	D.WHITING	02/05/03	12 X 44= 528 POS.
				chr	D.WHITING	02/05/03	dwg no
				appd	D.WHITING	02/05/03	10022671
sheet index	revision sheet						type
							CUSTOMER Drawing

Copyright FCI



FCIconnect.com

PRODUCT NUMBER	PICK-UP CAP	CONTACT PLATING	SOLDER BALL
10022671-002	YES	15u" (.38um) Au OVER Ni	SnPb
10022671-002LF			SnAgCu LEAD FREE (7)(8)
10022671-102	YES	30u" (.76um) Au OVER Ni	SnPb
10022671-102LF			SnAgCu LEAD FREE (7)(8)
10022671-202	YES	SEE NOTE 5	SnPb
10022671-202LF			SnAgCu LEAD FREE (7)(8)

NOTES:

① MAT'L:

HOUSING: LCP

CONTACT: COPPER ALLOY

PLATING:

CONTACT: (SEE TABLE ON SHEET3)

SOLDER BALL: (SEE TABLE ON SHEET3)

EUTECTIC SnPb OR LEAD FREE

95.5Sn/4Ag/0.5Cu

② SOLDER BALLS WILL NOT BE PERFECT SPHERICAL SHAPE DUE TO REFLOW ATTACHMENT.

③ MATED HEIGHT EFFECTED BY CUSTOMER'S PCB PAD SIZE, PLATING, SOLDER REFLOW PROFILE, & SOLDER PASTE.

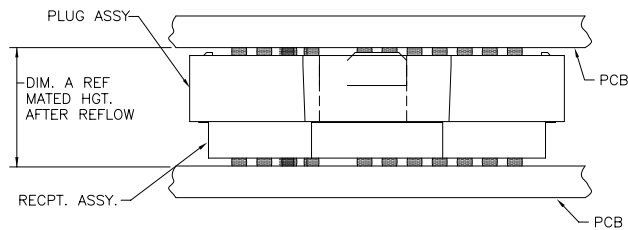
④ PLATING FOR INDICATED -2XX SERIES PART NOS. MEETS THE REQUIREMENTS OF NORTEL NPS25298-2 (CENTRAL OFFICE ENVIRONMENT, 25 YEAR LIFE EXPECTANCY).

⑤ PLATING FOR INDICATED -2XX SERIES PART NOS. IS Au OVER Ni WITH SPECIAL CONTACT GEOMETRY TO MEET REQUIREMENTS OF TELCORDIA GR-1217-CORE: CENTRAL OFFICE ENVIRONMENT.

⑥ KNIT LINE: SLIGHT VISIBLE MARKS (USUALLY A LINE) INDICATING THE DIRECTION AND MEETING POINT OF PLASTIC RESIN FLOW FRONTS TRAVELING AROUND ANY OBSTRUCTIONS TO THE RESIN FLOW VIA THE REQUIRED MOLD TOOLING.

⑦ FOR PROPER APPLICATION FOLLOW FCI APPLICATION SPECIFICATION GS-20-033 LEAD FREE SOLDER BALLS WILL NOT SOLDER PROPERLY IN A LEADED SOLDER PROCESS DUE TO A HIGHER REFLOW TEMPERATURE. LEAD FREE PRODUCT IS THEREFORE NOT BACKWARDS COMPATIBLE WITH LEADED OR SOME SOLDERING APPLICATIONS. REFERENCE FCI APPLICATION SPECIFICATION

⑧ THIS PRODUCT MEETS EUROPEAN UNION DIRECTIVES AND OTHER COUNTRY REGULATIONS AS DESCRIBED IN GS-22-008 PRODUCT MEETING THIS DIRECTIVE IS IDENTIFIED IN THE LOT CODE NUMBER MARKED ON EACH PART BY HAVING AN "X" IN THE SEVENTH CHARACTER POSITION



MATED HEIGHT TABLE		
DIM. A	RECPT. ASSY. P/N	PLUG ASSY. P/N
6.0	10026846-X01	10022671-X02

MATED HEIGHT AFTER REFLOW IS BASED ON Ø .64mm PAD (METAL-DEFINED) AND .13mm SOLDER PASTE STENCIL THICKNESS. SEE NOTE 3.

END VIEW - MATED CONNECTORS SCALE NONE

mat'l. code	SEE NOTE 1	surface	ASME Y14.5	tolerance	ASME Y14.5	projection	product family
tr	ecn no	dr	date	tolerances unless otherwise specified			MEG-Array
c				angles	X ±3	MM	title
				0° ±2°	.XX ±10	scale 1:1	0mm PLUG ASSY
				dr	D.INGRAM 02/05/03		12 X 44= 528 POS.
				engr	D.WHITING 02/05/03		sheet 3 of 3
				chr	D.WHITING 02/05/03		size A4
				appd	D.WHITING 02/05/03		dwg no 10022671
sheet index	revision sheet						type CUSTOMER Drawing

form: A4mmXLC

PDM: Rev:C

STATUS:Released

Printed: Feb 12, 2011