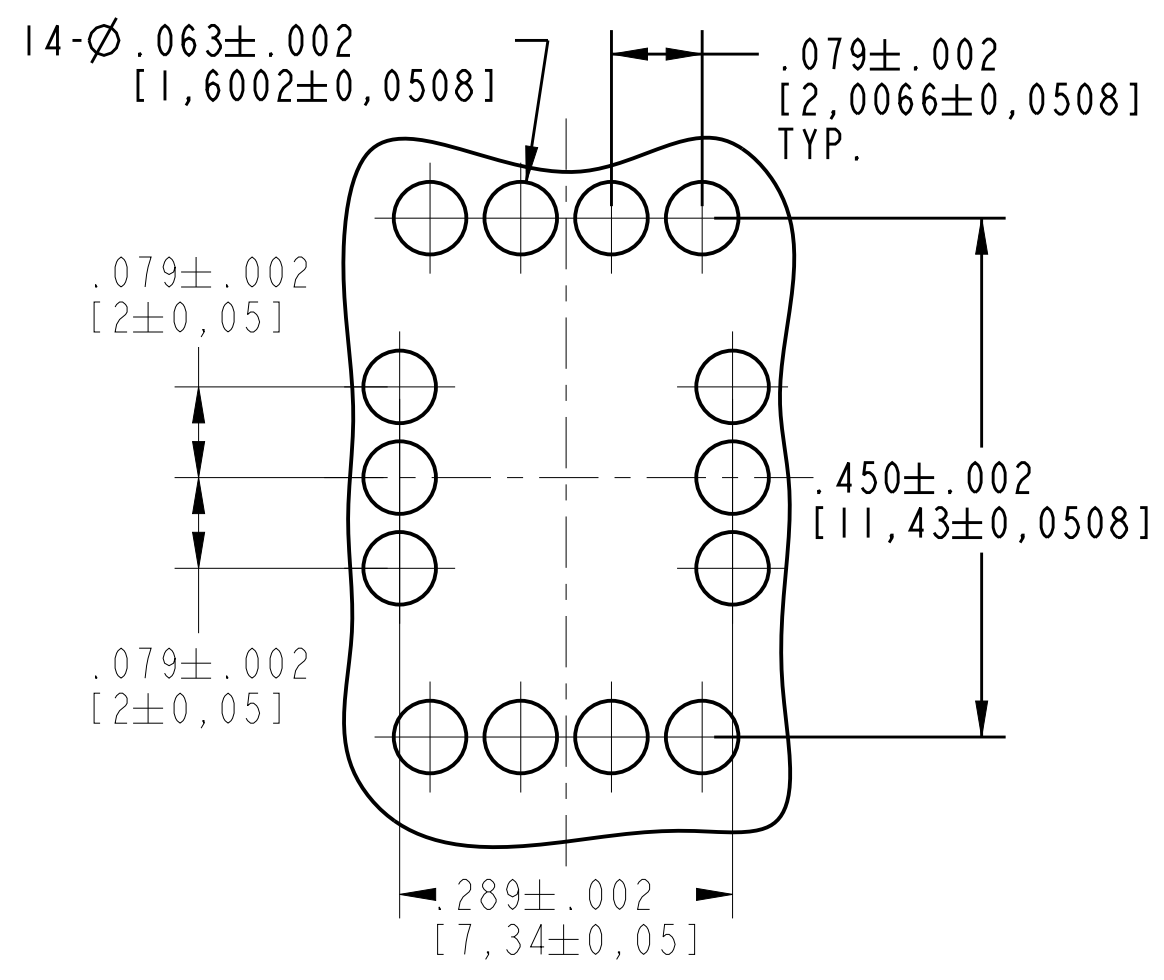
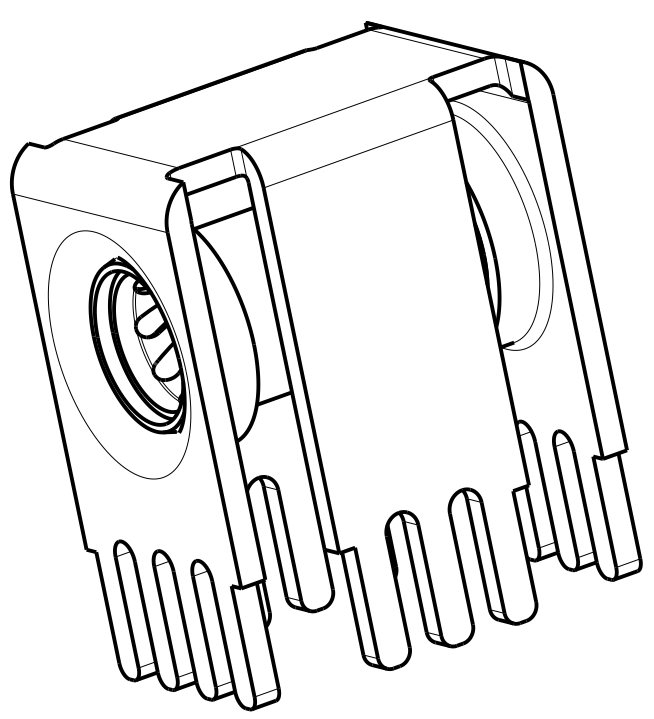


REV. A		SHEET 1 OF 1		DOCUMENT NO. 10-729797-000	
REVISIONS					
REV.	DESCRIPTION			DATE	
A	INITIAL RELEASE			2013-12-6	

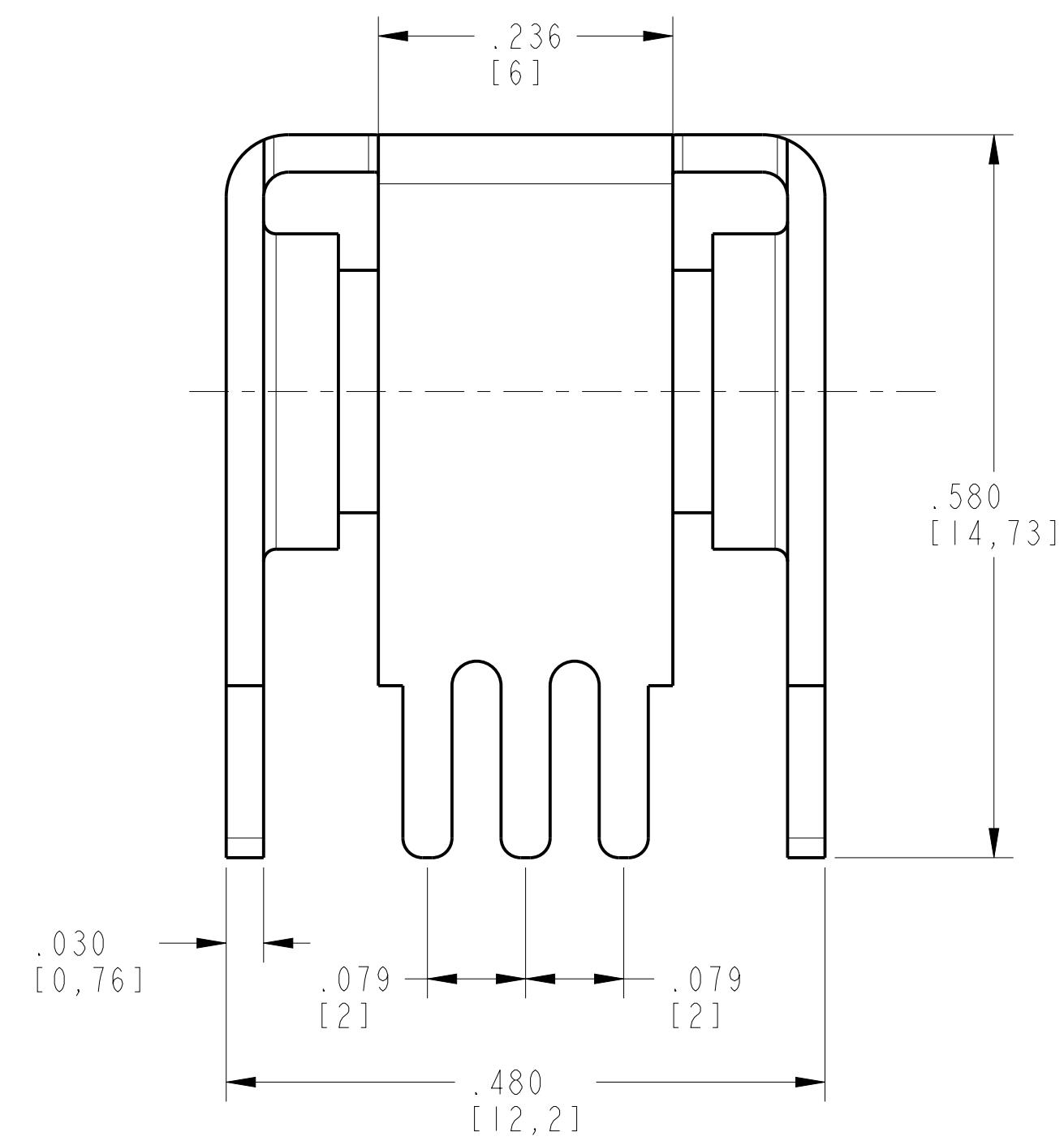
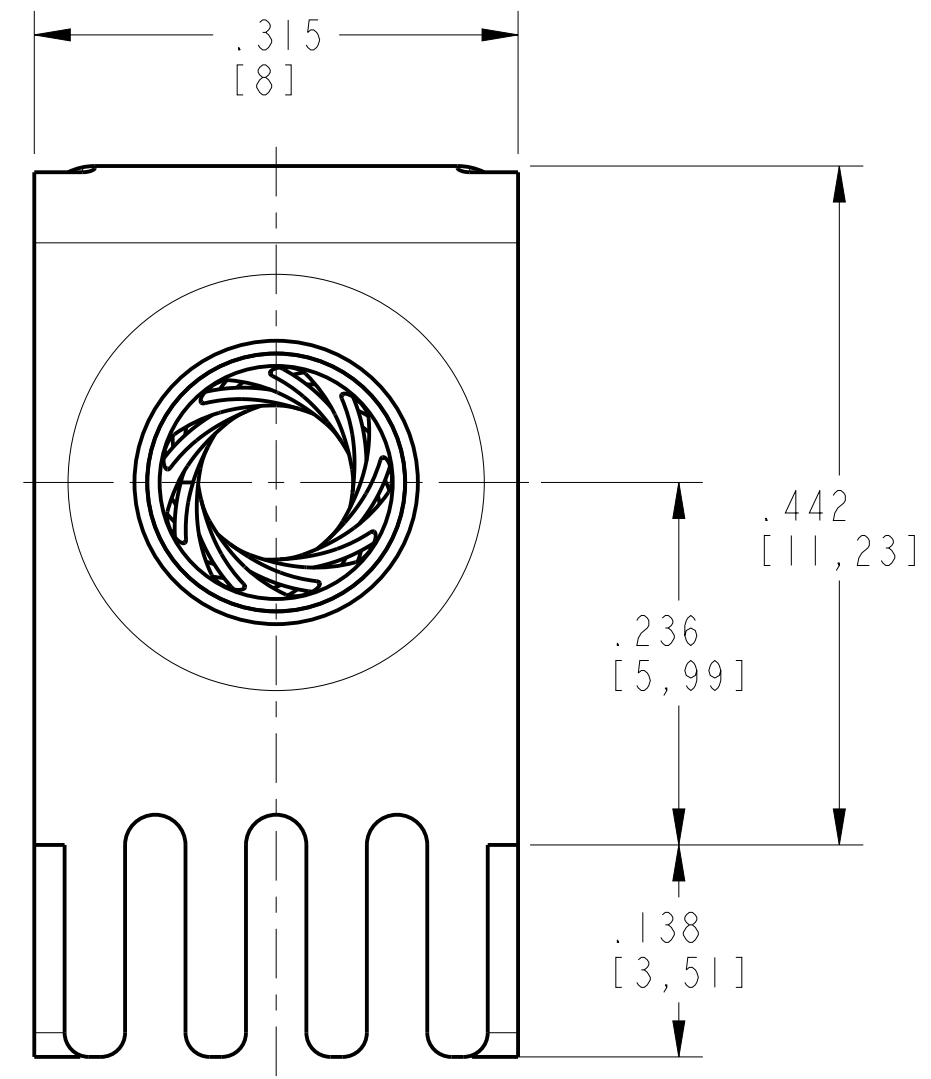
CUSTOMER DRAWING



PCB LAYOUT RECOMMENDATION



SCALE 5.000



2. SPECIFICATION:
- 1) SURFACE FINISH:
CONTACT: SILVER;
HOLDER: Tin.
 - 2) RATED CURRENT: 70A.

1. THE REFERENCED MATERIAL SHALL BE CERTIFIED TO COMPLIANT TO THE 2002/95/EC RoHS DIRECTIVE AMENDED PER 2005/618/EC.

NOTES:
THE USE OF THIS DOCUMENT IS UNLIMITED. HOWEVER, DOCUMENTS REFERENCED HEREON MAY CONTAIN LIMITED RIGHTS DATA.

N/A	PRO/ENGINEER INFORMATION
N/A	Pro/e Model Used: 10-729797-000.ASSEM
N/A	Drawing Name: 10-729797-000-CUS-A
N/A	NEXT ASSEMBLY

UNLESS OTHERWISE SPECIFIED	SPECIFICATIONS	POS	QTY	PART NUMBER	DESCRIPTION	NOTE
		PARTS LIST				
LINEAR DIMENSIONS ARE IN INCHES TOLERANCES: .XXXX = ±.0005 ANGLES= ±2° .XXX = ±.010 .XX = ±.03 .X = ±.1	MATERIAL SPEC.	APPROVALS		DATE	AMPHENOL CORPORATION 40-60 DELAWARE AVENUE SIDNEY, N.Y. 13838	
	N/A	PREPARED BY	CHRIS LI	06-Dec-13		
DIM. & TOL. PER ASME Y14.5M; DRM PER MIL-DTL-31000; OTHER Amphenol Sids. PER 9-3800	PROCESS SPEC.	ENGINEER IN CHARGE	CHRIS LI		ST 3.0MM RADSOK PCB MOUNT CONNECTOR	
	N/A	DESIGN MANAGER	RAN XIAO			
LEGENDS: =FLAG NOTE CALL OUT REFERENCE ONLY		DESIGN ACTIVITY GROUP	C & I		SIZE	REV.
					C	A
					CAGE CODE	DOCUMENT NO.
					77820	10-729797-000
					SCALE: 8.0	REF: N/A
						SHEET 1 OF 1

DOCUMENT NO. 10-729797-000 SHEET 1 OF 1 REV. A

DOCUMENT NO. 10-729797-000 SHEET 1 OF 1 REV. A