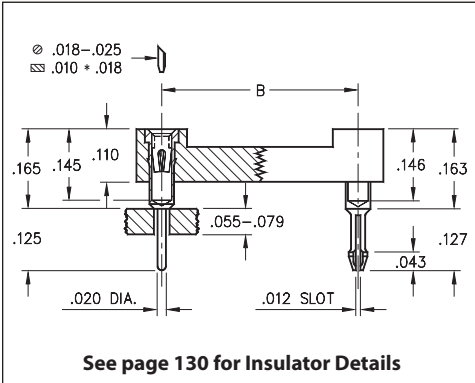
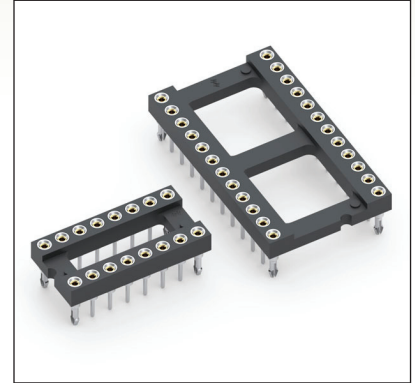


DUAL-IN-LINE SOCKETS

SERIES 101 • CLINCH PIN • OPEN FRAME



- Special lock-down feature prevents floating of socket during soldering. Open insulator with ladder construction
- Socket pins feature closed end construction eliminating any solder wicking problems
- Hi-Rel, 4-finger BeCu #30 contact is rated at 3 amps. See page 253 for details
- Series 101 uses MM #1001 and MM #0156 pins. See page 165 for details
- Insulators are high temperature thermoplastic, suitable for all soldering operations
- For Electrical, Mechanical and Environmental Data, see page 264 for details



| Total number of pins | Pin Spacing | | | Quantity per tube | ORDERING INFORMATION | |
|----------------------|-------------|-----|-----|-------------------|----------------------|--|
| | A | B | C | | | |
| 6 | 0.3 | 0.3 | 0.4 | 67 | 101-93-306-41-56X000 | |
| 8 | 0.4 | 0.3 | 0.4 | 50 | 101-93-308-41-56X000 | |
| 14 | 0.7 | 0.3 | 0.4 | 28 | 101-93-314-41-56X000 | |
| 16 | 0.8 | 0.3 | 0.4 | 25 | 101-93-316-41-56X000 | |
| 18 | 0.9 | 0.3 | 0.4 | 22 | 101-93-318-41-56X000 | |
| 20 | 1.0 | 0.3 | 0.4 | 20 | 101-93-320-41-56X000 | |
| 24 | 1.2 | 0.3 | 0.4 | 16 | 101-93-324-41-56X000 | |
| 28 | 1.4 | 0.3 | 0.4 | 14 | 101-93-328-41-56X000 | |
| 22 | 1.1 | 0.4 | 0.5 | 18 | 101-93-422-41-56X000 | |
| 24 | 1.2 | 0.6 | 0.7 | 16 | 101-93-624-41-56X000 | |
| 28 | 1.4 | 0.6 | 0.7 | 14 | 101-93-628-41-56X000 | |
| 32 | 1.6 | 0.6 | 0.7 | 12 | 101-93-632-41-56X000 | |
| 40 | 2.0 | 0.6 | 0.7 | 10 | 101-93-640-41-56X000 | |
| 48 | 2.4 | 0.6 | 0.7 | 8 | 101-93-648-41-56X000 | |
| 64 | 3.2 | 0.9 | 1.0 | 6 | 101-93-964-41-56X000 | |

Clinch Pins: ↑

Two Opposite Corner Pins **X = 0**

Four Corner Pins **X = 8**

XX=Plating Code
See Below

RoHS-2
2011/65/EU

| SPECIFY PLATING CODE XX = | | 93 | | | |
|---------------------------|--|--------------|--|--|--|
| Sleeve (Pin) | | 200 μ" Sn/Pb | | | |
| Contact (Clip) | | 30 μ" Au | | | |

Mouser Electronics

Authorized Distributor

Click to View Pricing, Inventory, Delivery & Lifecycle Information:

Mill-Max:

[101-93-964-41-560000](#) [101-93-648-41-560000](#) [101-93-640-41-560000](#) [101-93-632-41-560000](#) [101-93-628-41-560000](#) [101-93-624-41-560000](#) [101-93-422-41-560000](#) [101-93-328-41-560000](#) [101-93-324-41-560000](#) [101-93-320-41-560000](#) [101-93-318-41-560000](#) [101-93-316-41-560000](#) [101-93-314-41-560000](#) [101-93-308-41-560000](#) [101-93-306-41-560000](#)