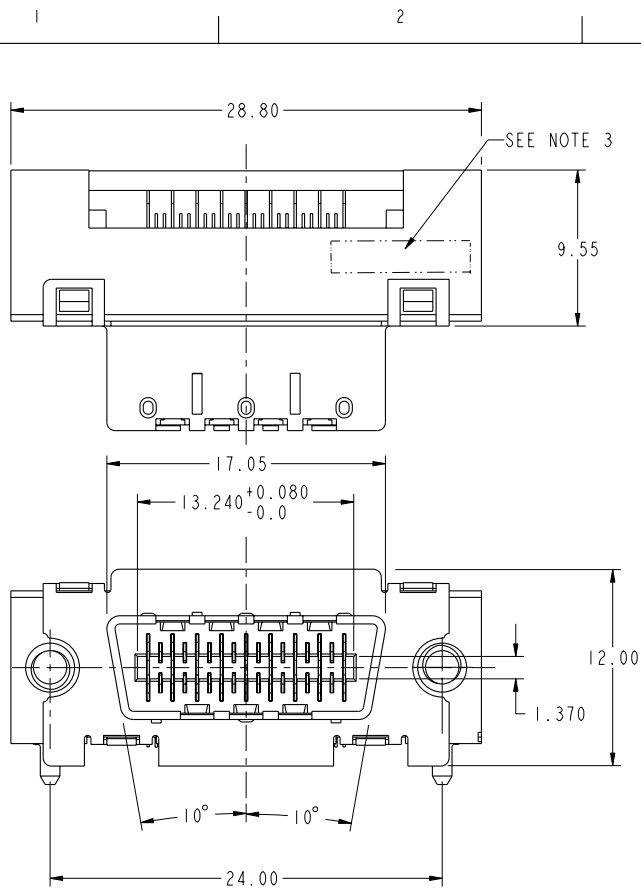
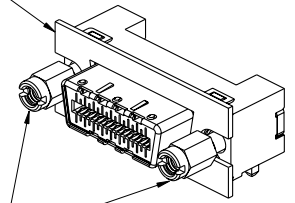




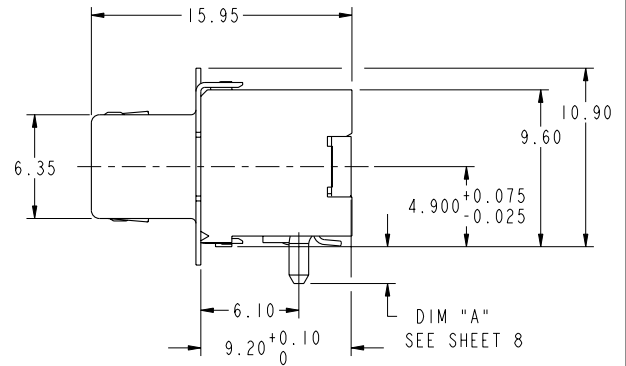
Copyright FCI.



AVAILABLE WITH OR WITHOUT
EMI GASKET.
FOAM GASKET P/N 10019396-001 CAN
BE PURCHASED SEPARATELY.
METAL GASKET P/N 10043517 MUST BE
PURCHASED ALREADY ASSEMBLED.



P/N 10009634-001, 2X
THREADED STANDOFFS SOLD
SEPARATELY



rev	ecn no	dr	date
D	V04-0460	DAI	2004/06/08
E	V04-0830	TAB	2004/08/18
F	V04-1005	DAI	2004/10/06
G	V05-0063	TAB	2005/02/14
H	105-0141	HVN	2005/08/12
J	06-0123	HVN	2006/07/26
K	08-0048	RPK	2008/03/28

www.fciconnect.com		surface 3.2 / tolerance std ASME Y14.5	tolerance std ASME Y14.5	projection MM	size A4	Scale 3:1
Dr	G. PETERS	2003/08/13	ANGULAR	0.X ±.30	ECN	108-0048
Eng	D. BRANN	2003/08/13	LINEAR	0.XX ±.10	Spec ref	-
Chr	RAMESH P K	2008/03/27	0° ±2°	0.XXX ±.050	Product family	EyeMax (fm)
Appr	RAMESH P K	2008/03/27	Product family	EyeMax (fm)	Spec ref	-
FCI		4X R/A THUMBSCREW RECPT ASSEMBLY, w/ 7 KEY SLOTS		deg no	10009629	Rev. K
catalog no		CUSTOMER		sheet 1 of 9		

REV 1 - 2006-04-17

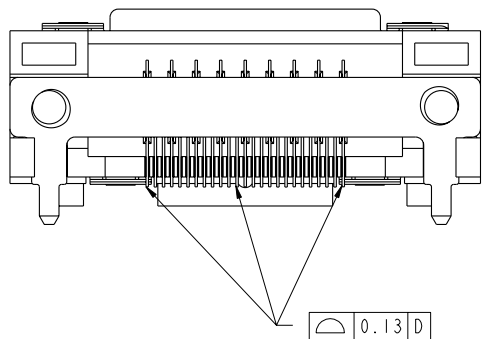
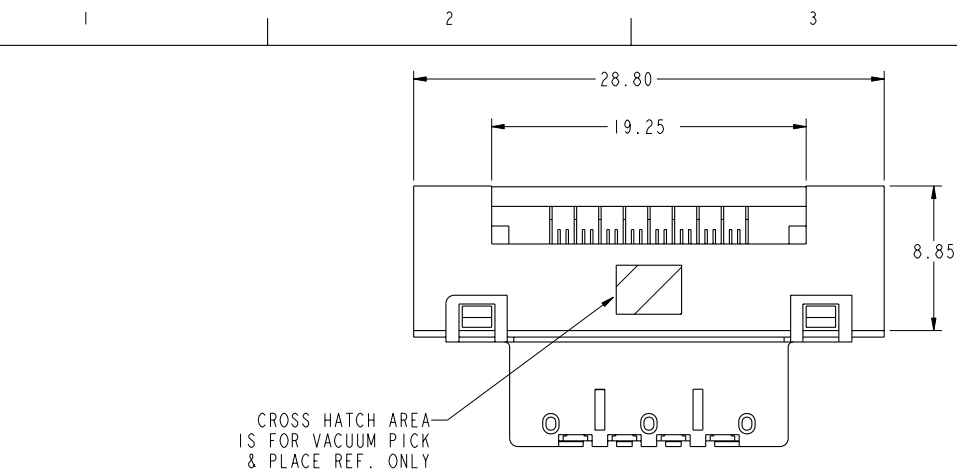
3 PDM: Rev:K

STATUS Released

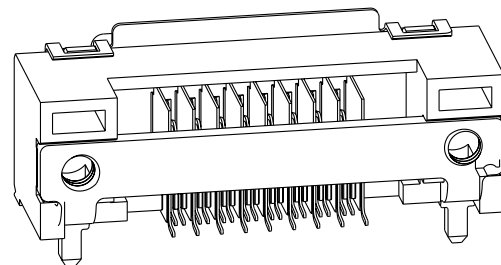
4 Printed: Apr 02, 2008



Copyright FCI.



COPLANARITY MEASUREMENT TO BE TAKEN
AT THE BOTTOM MOST POINT ON CONTACT TAILS
COPLANARITY ZONE IS BELOW DATUM D.



www.fciconnect.com			surface 3.2/ ASME Y14.5	tolerance std ASME Y14.5	projection ASME Y14.5	MM
			TOLERANCES UNLESS OTHERWISE SPECIFIED			
Dr	G. PETERS	2003/08/13	ANGULAR	0.X	±.30	size A4
Eng	D. BRANN	2003/08/13	LINEAR	0.XX	±.10	Scale 3:1
Chr	RAMESH P K	2008/03/27	0° ±2°	0.XXX	±.050	ECN 108-0048
Appr	RAMESH P K	2008/03/27	Product family EyeMax (Im)			Spec ref -
FCI			4X R/A THUMBSCREW RECPT ASSEMBLY, w/ 7 KEY SLOTS			Rev. K
catalog no			deg no			10009629
			CUSTOMER			sheet 2 of 9

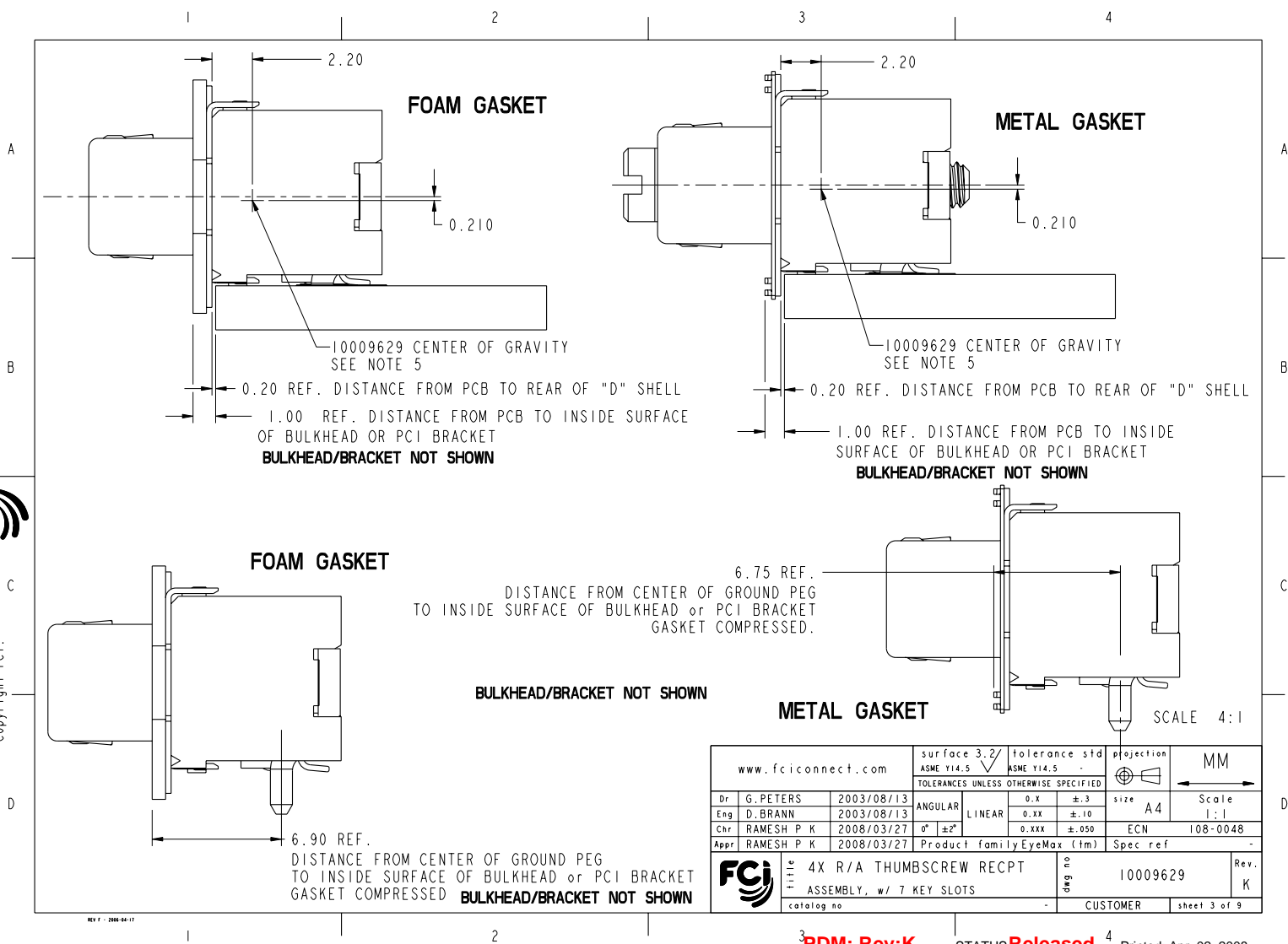
³ PDM: Rev:K

STATUS Released

⁴ Printed: Apr 02, 2008



Copyright FCI.



PDM: Rev:K

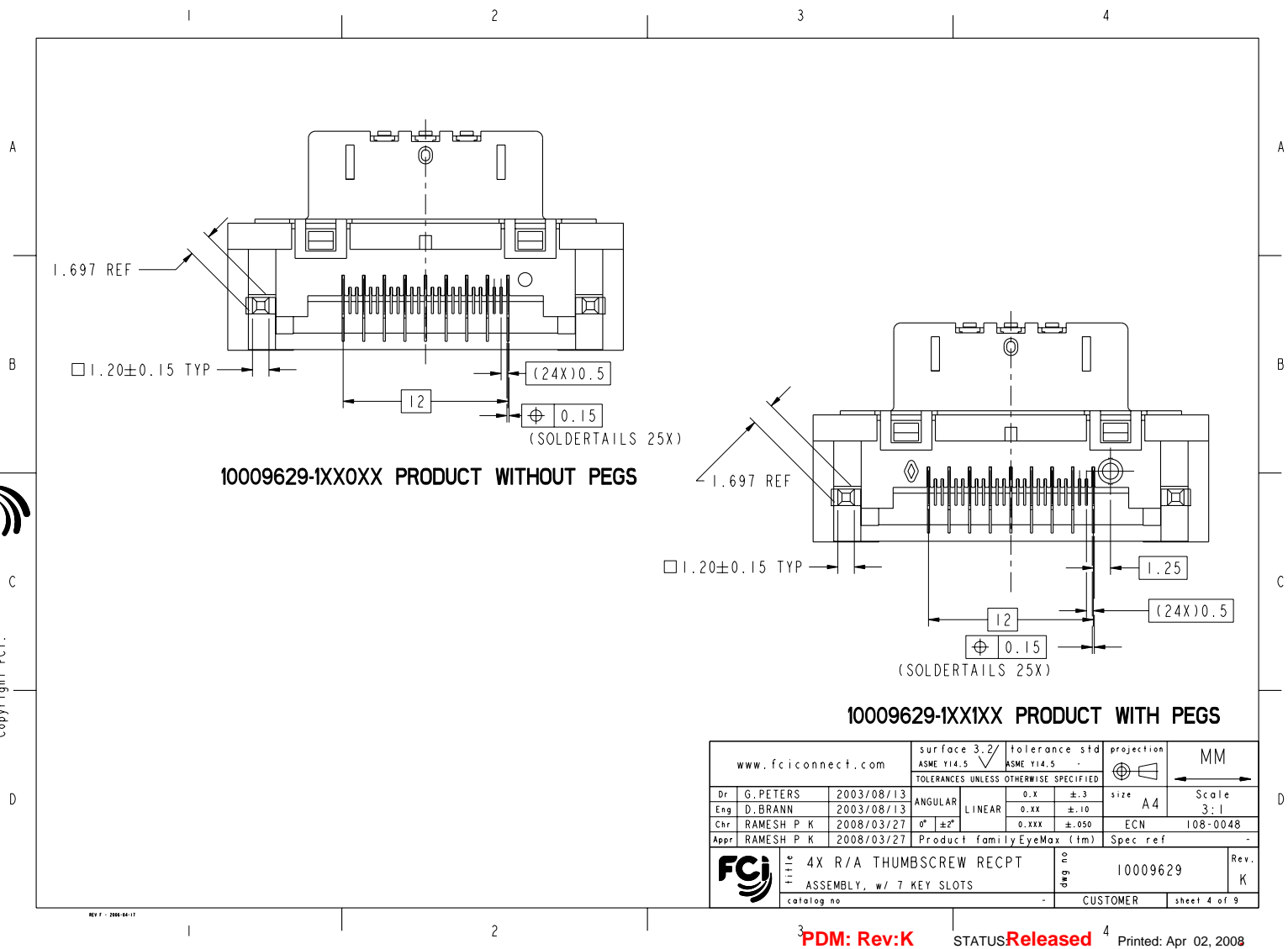
STATUS Released

Printed: Apr 02, 2008



Copyright FCI.

REV 1 - 2008-04-17



www.fciconnect.com		surface 3.2/ ASME Y14.5	tolerance std ASME Y14.5	projection MM		
		TOLERANCES UNLESS OTHERWISE SPECIFIED				
Dr	G. PETERS	2003/08/13	ANGULAR		size	Scale
Eng	D. BRANN	2003/08/13	LINEAR	0.X ±.3	A4	3:1
Chr	RAMESH P K	2008/03/27	0° ±2°	0.XX ±.10	ECN	108-0048
Appr	RAMESH P K	2008/03/27	Product family	EyeMax (Im)	Spec ref	-
		4X R/A THUMBSCREW RECPT ASSEMBLY, w/ 7 KEY SLOTS		deg no	10009629	Rev. K
catalog no		-		CUSTOMER		sheet 4 of 9

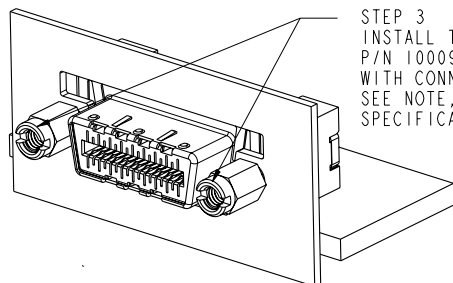
3 PDM: Rev:K

STATUS Released

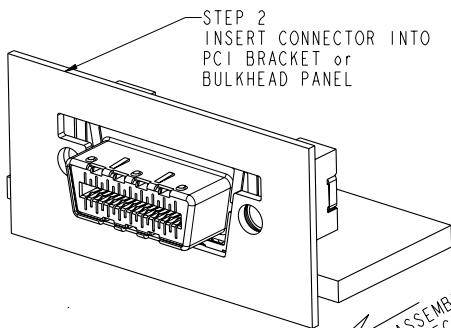
4 Printed: Apr 02, 2008



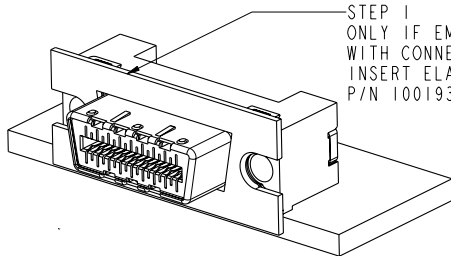
Copyright FCI.



STEP 3
INSTALL THREADED STANDOFFS
P/N 10009634-001, NOT SUPPLIED
WITH CONNECTOR ASSEMBLY
SEE NOTE, SHEET 8, FOR TORQUE
SPECIFICATION.



STEP 2
INSERT CONNECTOR INTO
PCI BRACKET or
BULKHEAD PANEL

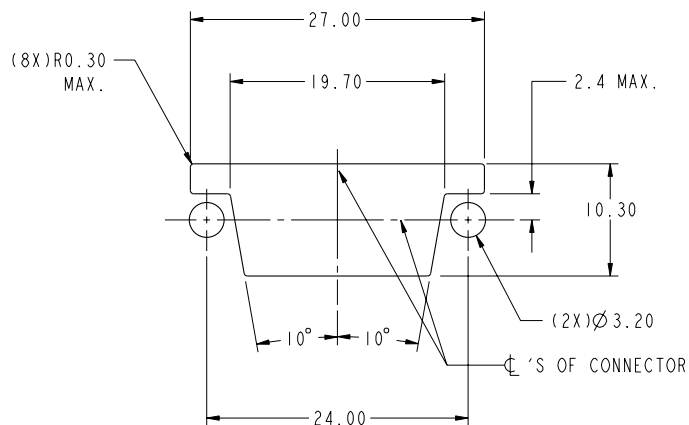


STEP 1
ONLY IF EMI GASKET NOT SUPPLIED
WITH CONNECTOR ASSEMBLY,
INSERT ELASTOMERIC EMI GASKET,
P/N 10019396-001.

CONNECTOR ASSEMBLY
INSERTION DIRECTION

CONNECTOR APPLICATION TO PCI BRACKET/PANEL

REV 1 - 2006-04-17



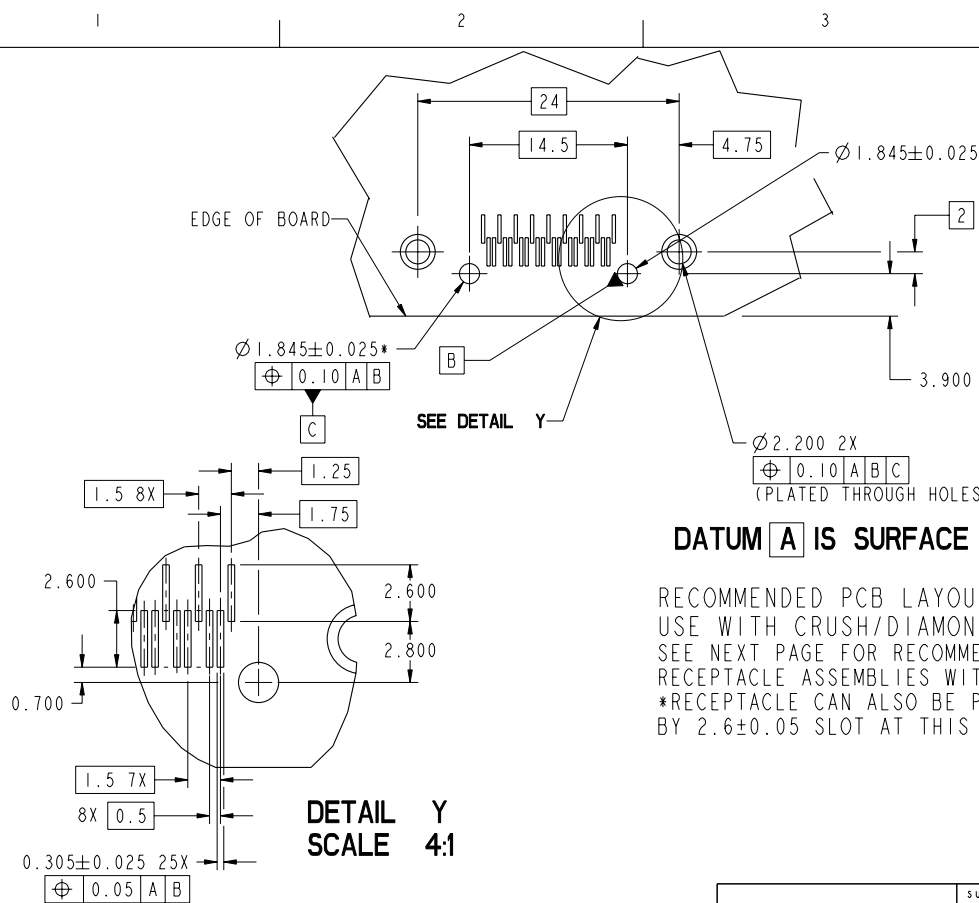
RECOMMENDED PANEL CUTOUT

www.fciconnect.com			surface 3.2/ ASME Y14.5	tolerance std ASME Y14.5	projection	MM
			TOLERANCES UNLESS OTHERWISE SPECIFIED			
Dr	G. PETERS	2003/08/13	ANGULAR	0.X ±.30	size A4	Scale 1:1
Eng	D. BRANN	2003/08/13	LINEAR	0.XX ±.10		
Chr	RAMESH P K	2008/03/27	0° ±2°	0.XXX ±.050	ECN	108-0048
Appr	RAMESH P K	2008/03/27	Product family EyeMax (Im)		Spec ref	-
			FCI		dag no	Rev.
			4X R/A THUMBSCREW RECPT		10009629	K
			ASSEMBLY, w/ 7 KEY SLOTS			
			catalog no	-	CUSTOMER	sheet 5 of 9

³ PDM: Rev:K


STATUS Released

⁴ Printed: Apr 02, 2008



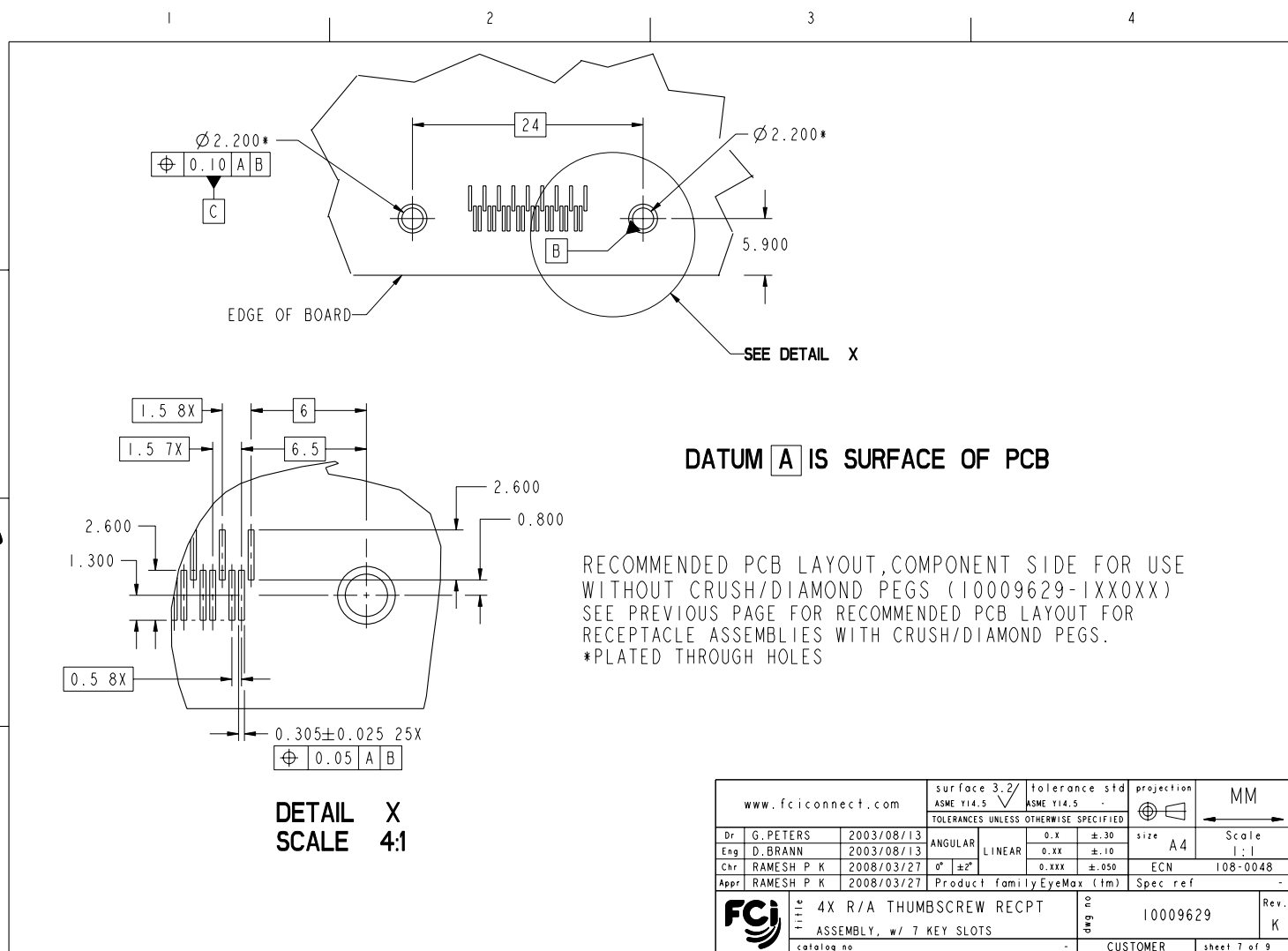
DATUM A IS SURFACE OF PCB

RECOMMENDED PCB LAYOUT, COMPONENT SIDE FOR
USE WITH CRUSH/DIAMOND PEGS (10009629-1XX1XX)
SEE NEXT PAGE FOR RECOMMENDED PCB LAYOUT FOR
RECEPTACLE ASSEMBLIES WITHOUT CRUSH/DIAMOND PEGS.
*RECEPTACLE CAN ALSO BE PLACED WITH $1.82 \pm 0.05 / -0.0$
BY 2.6 ± 0.05 SLOT AT THIS LOCATION ON THE PCB

www.fciconnect.com		surface 3.2 / tolerance std ASME Y14.5 / ASME Y14.5 -		projection ⊕ ⊞		MM ↔	
TOLERANCES UNLESS OTHERWISE SPECIFIED							
Dr	G. PETERS	2003/08/13	ANGULAR	0.X	± 30	size	A4
Eng	D. BRANN	2003/08/13	LINEAR	0.XX	± 10	Scale	1:1
Chr	RAMESH P K	2008/03/27	0°	± 0.XXX	± 050	ECN	108-0048
Appr	RAMESH P K	2008/03/27	Product family EyeMax (1m)			Spec ref	-
		title 4X R/A THUMBSCREW RECP ASSEMBLY, w/ 7 KEY SLOTS catalog no -				dag no 10009629 Rev. K	
				CUSTOMER		sheet 6 of 9	



Copyright FCI.



REV 1 - 2008-04-17

3 PDM: Rev:K

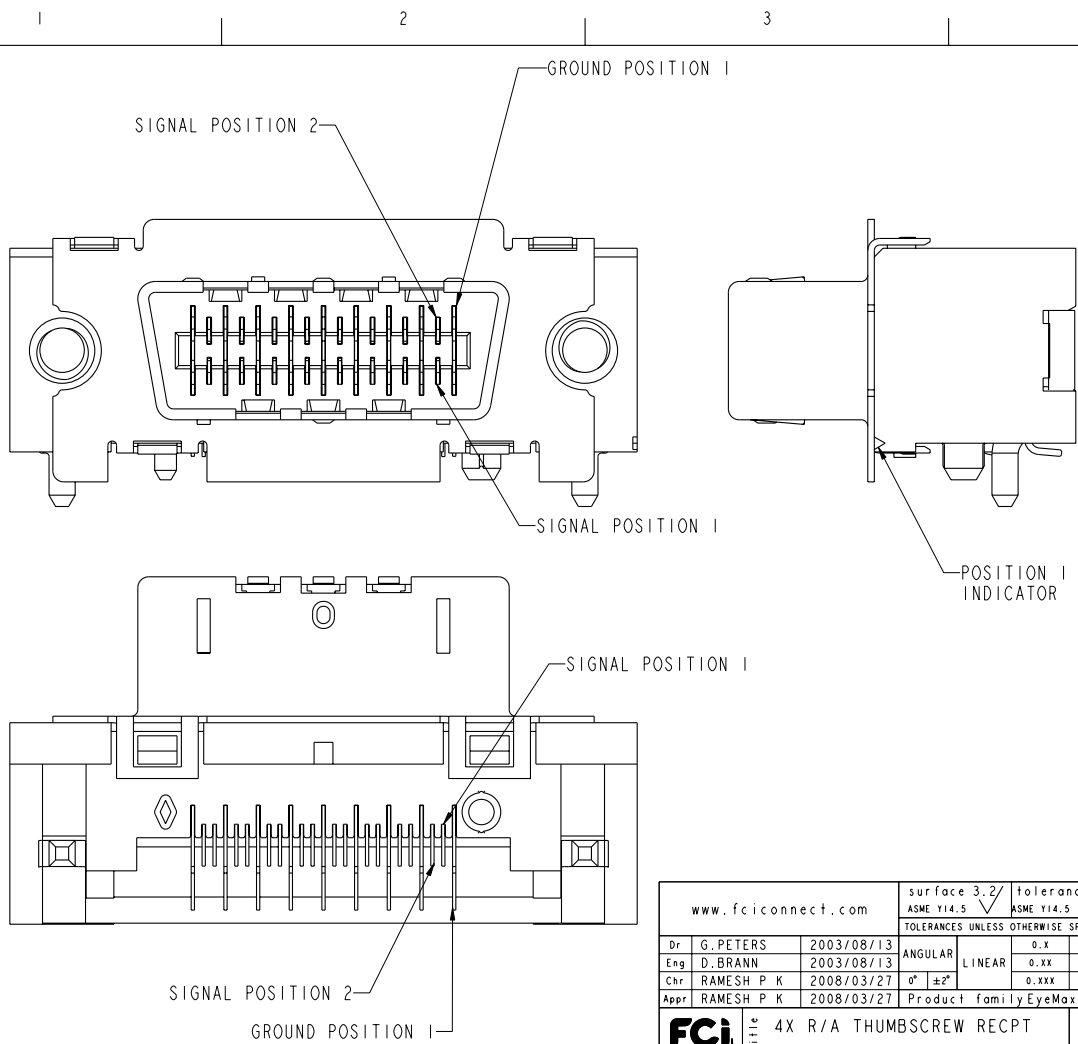
STATUS Released

4 Printed: Apr 02, 2008



Copyright FCI.

REV 1 - 2008-04-17



www.fciconnect.com			surface 3.2/ ASME Y14.5	tolerance std ASME Y14.5	projection	MM
			TOLERANCES UNLESS OTHERWISE SPECIFIED			
Dr	G. PETERS	2003/08/13	ANGULAR	0.X ±.30	size A4	Scale 1:1
Eng	D. BRANN	2003/08/13	LINEAR	0.XX ±.10		
Chr	RAMESH P K	2008/03/27	0° ±2°	0.XXX ±.050	ECN 108-0048	
Appr	RAMESH P K	2008/03/27	Product family EyeMax (Im)		Spec ref	-
FCI			4X R/A THUMBSCREW RECPT ASSEMBLY, w/ 7 KEY SLOTS		10009629	Rev. K
catalog no			-		CUSTOMER	sheet 8 of 9

³ PDM: Rev:K

STATUS Released

⁴ Printed: Apr 02, 2008



Copyright FCI.

PRODUCT NUMBER
10009629-1XXXXX

10009629-1XXXXXX

SOLDERTAIL PLATING
BLANK-TIN-LEAD
LF-LEAD FREE (SEE NOTE 2)

KEYING OPTIONS
0-NONE

PACKAGING

1-TAPE & REEL

2-TRAY

3-TAPE & REEL WITH THREADED STAND-OFFS INCLUDED
(PACKAGED SEPERATELY). 2 PER CONNECTOR.

4-TRAY WITH THREADED STAND-OFFS INCLUDED
(PACKAGED SEPERATELY). 2 PER CONNECTOR.

PEGS

0-NONE

1-CRUSH/DIAMOND PEGS

PCB THICKNESS

1-1.6mm

2-2.4mm

3-4.0mm

EMI GASKET

0-WITH FOAM GASKET

1-WITHOUT GASKET

2-WITH METAL GASKET (NOT TOOLED)

PLATING

GOLD OVER NICKEL IN CONTACT AREA

CONNECTOR NOTES:

- HOUSING MATERIAL: UL94 V-0 LCP RESIN.
SIGNAL PIN MATERIAL: COPPER ALLOY.
GROUND CONTACT MATERIAL: COPPER ALLOY.
- PLATING: LEAD FREE SOLDER TAILS 2 μ m (80 μ in) MIN MATTE TIN
OVER 1.27 μ m (50 μ in) MIN NICKEL UNDERPLATE.
- P/N AND DATE CODE TO APPEAR
ON THIS SURFACE.
- PRODUCT SPECIFICATION GS-12-209.
APPLICATION SPECIFICATION GS-20-025.
- CONNECTOR WEIGHT = 5.465 grams
- PACKAGING SPECIFICATION GS-14-794. PACKAGING OF LEAD FREE
PRODUCTS MEETS LABELING AND PACKAGING SPECIFICATION GS-14-920.
- MAXIMUM PANEL THICKNESS 1.70mm
- MAXIMUM TORQUE 0.45 N-m (4.0 lbf-in)

PCB NOTES:

- ALL DIMENSIONS ARE BASIC UNLESS OTHERWISE
SPECIFIED.
- ALL HOLE DIAMETERS ARE FINISHED HOLE SIZE
- MATES WITH EYEMAX[®] PLUG 58443 (WITHOUT PCB), 58638
(WITH UNEQUALIZED PCB) OR 10026692 (WITH EQUALIZED PCB).
- LEAD FREE PRODUCTS MEET EUROPEAN UNION DIRECTIVES AND
OTHER COUNTRY REGULATIONS AS DESCRIBED IN GS-22-008.
- THE HOUSING WILL WITHSTAND EXPOSURE TO 260°C PEAK TEMPERATURE
FOR 15 SECONDS IN A CONVECTION, INFRARED OR VAPOR PHASE REFLOW
OVEN.

PRODUCT NUMBER	BOARD THICKNESS	DIM A
10009629-1X1XXX	1.6mm	2.3mm
10009629-1X2XXX	2.4mm	3.1mm
10009629-1X3XXX	4.0mm	4.7mm

www.fciconnect.com			surface 3.2/ ASME Y14.5	tolerance std ASME Y14.5	projection	MM
			TOLERANCES UNLESS OTHERWISE SPECIFIED			
Dr	G. PETERS	2003/08/13	ANGULAR	0.X ±.30	size A4	Scale 1:1
Eng	D. BRANN	2003/08/13	LINEAR	0.XX ±.10		
Chr	RAMESH P K	2008/03/27	0° ±2°	0.XXX ±.050	ECN	108-0048
Appr	RAMESH P K	2008/03/27	Product family EyeMax (1m)		Spec ref	-
			FCI		dag no	10009629
			4X R/A THUMBSCREW REPT ASSEMBLY, w/ 7 KEY SLOTS		Rev.	K
			catalog no	-	CUSTOMER	sheet 9 of 9

REV 1 - 2006-06-17

3 PDM: Rev:K

4 STATUS Released Printed: Apr 02, 2008