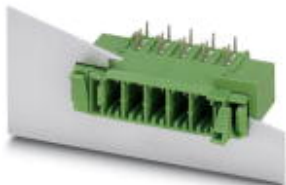


Printed-circuit board connector - DFK-PC 5/11-GU-7,62 - 1727896

Please be informed that the data shown in this PDF Document is generated from our Online Catalog. Please find the complete data in the user's documentation. Our General Terms of Use for Downloads are valid (<http://phoenixcontact.com/download>)

Header, Nominal current: 41 A, Rated voltage (III/2): 630 V, Number of positions: 11, Pitch: 7.62 mm, Color: green, Contact surface: Tin, Mounting: Soldering




Why buy this product

- ✓ Panel thickness of 1 mm to 3 mm
- ✓ Feed-through headers for use in combination with all PC 5 plugs
- ✓ For soldering onto the PCB
- ✓ Mounted on the housing panel by means of tool-free snap-lock mechanism or conventional screw connection



Key commercial data

| | |
|--------------------------------------|---|
| Packing unit | 10 pc |
| Minimum order quantity | 10 pc |
| GTIN |  4 046356 136143 |
| Weight per Piece (excluding packing) | 25.37 g |
| Custom tariff number | 85366990 |
| Country of origin | Poland |
| Note | Made to Order (non-returnable) |

Technical data

Dimensions

| | |
|----------------|-----------|
| Length | 29.25 mm |
| Pitch | 7.62 mm |
| Dimension a | 76.2 mm |
| Pin dimensions | 0,8 x 1,0 |
| Pin spacing | 7.62 mm |
| Hole diameter | 1.3 mm |

General

| | |
|---------------------------|-----------------|
| Range of articles | DFK-PC 5/...-GU |
| Insulating material group | I |

Printed-circuit board connector - DFK-PC 5/11-GU-7,62 - 1727896

Technical data

General

| | |
|---|--------|
| Rated surge voltage (III/3) | 6 kV |
| Rated surge voltage (III/2) | 6 kV |
| Rated surge voltage (II/2) | 6 kV |
| Rated voltage (III/3) | 500 V |
| Rated voltage (III/2) | 630 V |
| Rated voltage (II/2) | 800 V |
| Connection in acc. with standard | EN-VDE |
| Nominal current I_N | 41 A |
| Maximum load current | 41 A |
| Insulating material | PA |
| Inflammability class according to UL 94 | V0 |
| Color | green |
| Number of positions | 11 |

Classifications

eCl@ss

| | |
|------------|----------|
| eCl@ss 4.0 | 272607xx |
| eCl@ss 4.1 | 27260701 |
| eCl@ss 5.0 | 27260701 |
| eCl@ss 5.1 | 27141190 |
| eCl@ss 6.0 | 27260704 |
| eCl@ss 7.0 | 27440402 |
| eCl@ss 8.0 | 27440402 |

ETIM

| | |
|----------|----------|
| ETIM 3.0 | EC001121 |
| ETIM 4.0 | EC002637 |
| ETIM 5.0 | EC002637 |

UNSPSC

| | |
|---------------|----------|
| UNSPSC 6.01 | 30211810 |
| UNSPSC 7.0901 | 39121409 |
| UNSPSC 11 | 39121409 |
| UNSPSC 12.01 | 39121409 |
| UNSPSC 13.2 | 39121409 |

Approvals

Approvals

Printed-circuit board connector - DFK-PC 5/11-GU-7,62 - 1727896

Approvals

Approvals

UL Recognized / cUL Recognized / EAC / cULus Recognized

Ex Approvals

Approvals submitted

Approval details

| | | | |
|--------------------|-------|-------|-------|
| UL Recognized | | | |
| | B | C | D |
| Nominal current IN | 41 A | 41 A | 10 A |
| Nominal voltage UN | 300 V | 150 V | 300 V |

| | | | |
|--------------------|-------|-------|-------|
| cUL Recognized | | | |
| | B | C | D |
| Nominal current IN | 41 A | 41 A | 10 A |
| Nominal voltage UN | 300 V | 150 V | 300 V |

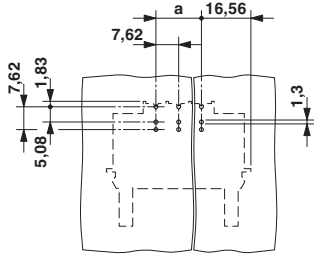
EAC

| | | | |
|------------------|--|--|--|
| cULus Recognized | | | |
|------------------|--|--|--|

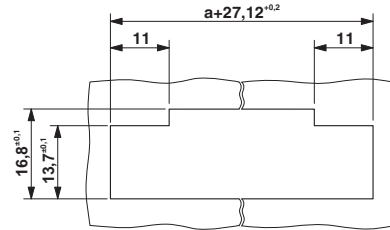
Drawings

Printed-circuit board connector - DFK-PC 5/11-GU-7,62 - 1727896

Drilling diagram

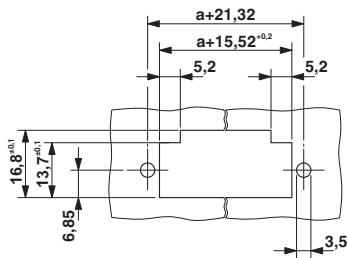


Dimensioned drawing

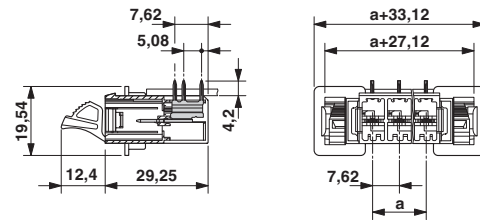


Sheet metal cutout for snap-on.

Dimensioned drawing



Dimensioned drawing



Sheet metal cutout for screw connection.