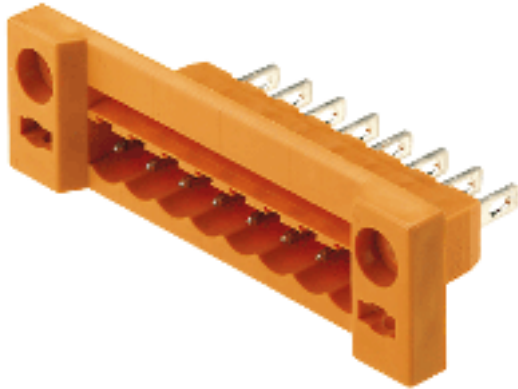


**OMNIMATE Signal - series BL/SL 5.08**  
**SLDF 5.08 L/F 5 SN OR BX**

**Weidmüller Interface GmbH & Co. KG**  
 Klingenbergstraße 16  
 D-32758 Detmold  
 Germany  
 Fon: +49 5231 14-0  
 Fax: +49 5231 14-292083  
 www.weidmueller.com



Male connector for through-panel mounting with optional locking function. Internal connection as flat-blade or solder connection. These male connectors provide space for labelling and can be coded.

- 400 V (IEC) / 300 V (UL)
- 15 A (IEC) / 10 A (UL)

**General ordering data**

|              |   |
|--------------|---|
| Type         | SLDF 5.08 L/F 5 SN OR BX  |
| Order No.    | <a href="#">1599160000</a>  |
| Version      | PCB plug-in connector, male header, 5.08 mm, No. of poles: 5, 180°, Flat-blade connection, Solder connection, Box |
| GTIN (EAN)   | 4008190079970   |
| Qty.         | 50 pc(s).   |
| Product data | IEC: 400 V / 15 A<br>UL: 300 V / 10 A   |
| Packaging    | Box   |

Creation date December 9, 2013 1:38:31 AM CET

## OMNIMATE Signal - series BL/SL 5.08 SLDF 5.08 L/F 5 SN OR BX

**Weidmüller Interface GmbH & Co. KG**  
Klingenbergstraße 16  
D-32758 Detmold  
Germany  
Fon: +49 5231 14-0  
Fax: +49 5231 14-292083  
www.weidmueller.com

## Technical data

### Dimensions and weights

Net weight 6.88 g

### System parameters

|                            |                                     |                        |  |
|----------------------------|-------------------------------------|------------------------|--|
| Product family             | OMNIMATE Signal - series BL/SL 5.08 | Wire connection method | Flat-blade connection, Solder connection |
| Conductor outlet direction | 180°                                | Pitch in mm (P)        | 5.08 mm                                  |
| Pitch in inches (P)        | 0.2 inch                            | No. of poles           | 5  |
| L1 in mm                   | 20.32 mm                            | L1 in inches           | 0.8 inch                                 |


### Material data

|                        |          |                           |        |
|------------------------|----------|---------------------------|--------|
| Insulating material    | PBT      | Colour                    | Orange |
| Colour chart (similar) | RAL 2000 | UL 94 flammability rating | V-0    |
| CTI                    | ≥ 200    | Contact material          | CuSn   |
| Contact surface        | tinned   |                           |        |


### DIN IEC rating data

|  |       |  |       |
|--|-------|--|-------|
| Rated current, min. no. of poles (TU=20°C)                           | 15 A  | Rated current, number of poles (Tu=40°C), min                            | 13 A  |
| Rated voltage for surge voltage class pollution degree II/2          | 400 V | Rated voltage for surge voltage class pollution degree III/2             | 320 V |
| Rated voltage for surge voltage class pollution degree III/3         | 250 V | Rated impulse voltage for surge voltage class pollution degree II/2      | 4 kV  |
| Rated impulse voltage for surge voltage class pollution degree III/2 | 4 kV  | Rated impulse voltage for surge voltage class contamination degree III/3 | 4 kV  |

### CSA rating data

|                             |   |                             |       |
|-----------------------------|---|-----------------------------|-------|
| Institute (CSA)             |  | Rated voltage (Use group B) | 300 V |
| Rated current (use group B) | 10 A  | Rated voltage (use group D) | 300 V |
| Rated current (use group D) | 10 A  |                             |       |

### UL 1059 rating data

|                             |   |                             |       |
|-----------------------------|---|-----------------------------|-------|
| Institute (UR)              |  | Rated voltage (use group B) | 300 V |
| Rated current (use group B) | 10 A  | Rated voltage (use group D) | 300 V |
| Rated current (use group D) | 10 A  |                             |       |

### Classifications

|            |             |            |             |
|------------|-------------|------------|-------------|
| ETIM 3.0   | EC001284    | UNSPSC     | 30-21-18-10 |
| eClass 5.1 | 27-26-07-04 | eClass 6.2 | 27-26-07-04 |
| eClass 7.1 | 27-44-04-02 |            |             |

**Data sheet****OMNIMATE Signal - series BL/SL 5.08  
SLDF 5.08 L/F 5 SN OR BX**

**Weidmüller Interface GmbH & Co. KG**  
Klingenbergstraße 16  
D-32758 Detmold  
Germany  
Fon: +49 5231 14-0  
Fax: +49 5231 14-292083  
www.weidmueller.com

**Technical data****Notes**

Notes

- Additional colours on request
- Rated current related to rated cross-section & min. No. of poles.
- Connectable cables with solder connection solid and flexible up to 2.5 mm<sup>2</sup> with insulating/shrink-wrap sleeve or from 2.8 mm flat blade receptacles with insulated sleeves acc. to DIN IEC 760
- P on drawing = pitch
- Rated data refer only to the component itself. Clearance and creepage distances to other components are to be designed in accordance with the relevant application standards.

**Approvals**

Approvals



ROHS

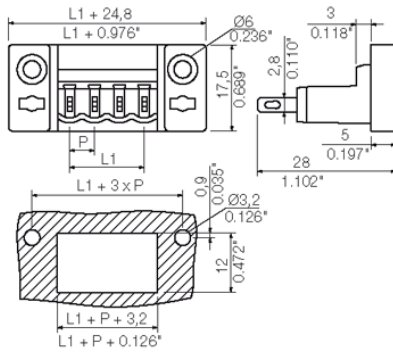
Conform

**Data sheet**

**OMNIMATE Signal - series BL/SL 5.08  
SLDF 5.08 L/F 5 SN OR BX**

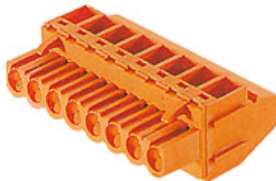
**Weidmüller Interface GmbH & Co. KG**  
 Klingenbergstraße 16  
 D-32758 Detmold  
 Germany  
 Fon: +49 5231 14-0  
 Fax: +49 5231 14-292083  
 www.weidmueller.com

**Drawings**



**OMNIMATE Signal - series BL/SL 5.08  
SLDF 5.08 L/F 5 SN OR BX**

**Weidmüller Interface GmbH & Co. KG**  
Klingenbergstraße 16  
D-32758 Detmold  
Germany  
Fon: +49 5231 14-0  
Fax: +49 5231 14-292083  
www.weidmueller.com

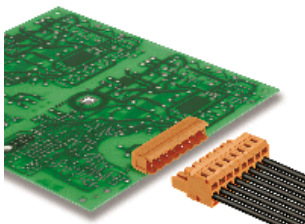
**Mating connector (conditionally pluggable)**
**BLZ 5.08/90B**


Female plugs with clamping-yoke screw connection. The female plugs provide space for labelling and can be coded.

- 0.2 - 2.5 mm<sup>2</sup> (IEC) / 26 - 12 AWG (UL)
- 400 V (IEC) / 300 V (UL)
- 15 A (IEC) / 10 A (UL)

**General ordering data**

| Type                           | Order No.                  | Version  | GTIN (EAN)    | Qty.      | Product data  | Packaging |
|--------------------------------|----------------------------|--|---------------|-----------|---|-----------|
| BLZ<br>5.08/05/90B<br>SN BK BX | <a href="#">1555310000</a> | PCB plug-in connector,<br>female plug, 5.08 mm, No.<br>of poles: 5, 90°, Clamping<br>yoke connection, Clamping<br>range, rated connection,<br>max.: 3.31 mm <sup>2</sup> , Box | 4008190267971 | 66 pc(s). | IEC: 400 V / 15 A / 0.2 - 2.5 mm <sup>2</sup><br>UL: 300 V / 10 A / AWG 26 - AWG 12 | Box       |
| BLZ<br>5.08/05/90B<br>SN OR BX | <a href="#">1555360000</a> | PCB plug-in connector,<br>female plug, 5.08 mm, No.<br>of poles: 5, 90°, Clamping<br>yoke connection, Clamping<br>range, rated connection,<br>max.: 3.31 mm <sup>2</sup> , Box | 4008190014902 | 66 pc(s). | IEC: 400 V / 15 A / 0.2 - 2.5 mm <sup>2</sup><br>UL: 300 V / 10 A / AWG 26 - AWG 12 | Box       |

**BLZF 5.08/180B**


Female plugs with tension-clamp wire connection system, straight 180° outlet direction. The female plugs provide space for labelling and can be coded.

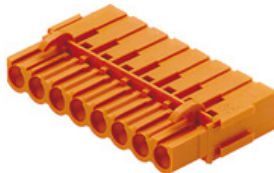
- 0.2 - 2.5 mm<sup>2</sup> (IEC) / 26 - 12 AWG (UL)
- 400 V (IEC) / 300 V (UL)
- 17 A (IEC) / 15 A (UL)

**General ordering data**

| Type                             | Order No.                  | Version  | GTIN (EAN)    | Qty.      | Product data  | Packaging |
|----------------------------------|----------------------------|--|---------------|-----------|---|-----------|
| BLZF<br>5.08/05/180B<br>SN OR BX | <a href="#">1708330000</a> | PCB plug-in connector,<br>female plug, 5.08 mm,<br>No. of poles: 5, 180°,<br>Tension clamp connection,<br>Clamping range, rated<br>connection, max.: 3.31<br>mm <sup>2</sup> , Box | 4008190317799 | 66 pc(s). | IEC: 400 V / 17 A / 0.2 - 2.5 mm <sup>2</sup><br>UL: 300 V / 15 A / AWG 26 - AWG 12 | Box       |

**OMNIMATE Signal - series BL/SL 5.08  
SLDF 5.08 L/F 5 SN OR BX**

**Weidmüller Interface GmbH & Co. KG**  
Klingenbergstraße 16  
D-32758 Detmold  
Germany  
Fon: +49 5231 14-0  
Fax: +49 5231 14-292083  
www.weidmueller.com

**Mating connector (conditionally pluggable)**
**BLC 5.08BR**


Female plugs with crimp wire connection system. The female plugs provide space for labelling and can be coded.

- 0.25 - 2.5 mm<sup>2</sup> (IEC) / 26 - 14 AWG (UL)
- 400 V (IEC) / 300 V (UL)
- 21 A (IEC) / 10 A (UL)

**General ordering data**

| Type                          | Order No.                  | Version  | GTIN (EAN)    | Qty.      | Product data  | Packaging |
|-------------------------------|----------------------------|--|---------------|-----------|---|-----------|
| BLC<br>5.08/05/180BR<br>BK BX | <a href="#">1712140000</a> | PCB plug-in connector,<br>female plug, 5.08 mm, No.<br>of poles: 5, 180°, Crimp<br>connection, Clamping<br>range, rated connection,<br>max.: 2.5 mm <sup>2</sup> , Box | 4008190935153 | 50 pc(s). | IEC: 400 V / 21 A<br>UL: 300 V / 10 A / AWG 26 - AWG 14 | Box       |
| BLC<br>5.08/05/180BR<br>OR BX | <a href="#">1649400000</a> | PCB plug-in connector,<br>female plug, 5.08 mm, No.<br>of poles: 5, 180°, Crimp<br>connection, Clamping<br>range, rated connection,<br>max.: 2.5 mm <sup>2</sup> , Box | 4008190294519 | 50 pc(s). | IEC: 400 V / 21 A<br>UL: 300 V / 10 A / AWG 26 - AWG 14 | Box       |

**BLZF 5.08/90B**


Female plugs with tension-clamp wire connection system. The female plugs provide space for labelling and can be coded.

- 0.2 - 2.5 mm<sup>2</sup> (IEC) / 26 - 12 AWG (UL)
- 400 V (IEC) / 300 V (UL)
- 16.5 A (IEC) / 10 A (UL)

**General ordering data**

| Type                            | Order No.                  | Version   | GTIN (EAN)    | Qty.      | Product data  | Packaging |
|---------------------------------|----------------------------|---|---------------|-----------|---|-----------|
| BLZF<br>5.08/05/90B<br>SN BK BX | <a href="#">1671510000</a> | PCB plug-in connector,<br>female plug, 5.08 mm,<br>No. of poles: 5, 90°,<br>Tension clamp connection,<br>Clamping range, rated<br>connection, max.: 3.31<br>mm <sup>2</sup> , Box | 4008190433215 | 66 pc(s). | IEC: 400 V / 16.5 A / 0.2 - 2.5 mm <sup>2</sup><br>UL: 300 V / 10 A / AWG 26 - AWG 12 | Box       |
| BLZF<br>5.08/05/90B<br>SN OR BX | <a href="#">1671280000</a> | PCB plug-in connector,<br>female plug, 5.08 mm,<br>No. of poles: 5, 90°,<br>Tension clamp connection,<br>Clamping range, rated  | 4008190432980 | 66 pc(s). | IEC: 400 V / 16.5 A / 0.2 - 2.5 mm <sup>2</sup><br>UL: 300 V / 10 A / AWG 26 - AWG 12 | Box       |

**OMNIMATE Signal - series BL/SL 5.08  
SLDF 5.08 L/F 5 SN OR BX**

**Weidmüller Interface GmbH & Co. KG**  
Klingenbergstraße 16  
D-32758 Detmold  
Germany  
Fon: +49 5231 14-0  
Fax: +49 5231 14-292083  
www.weidmueller.com

**Mating connector (conditionally pluggable)**

connection, max.: 3.31  
mm<sup>2</sup>, Box

**BLZ 5.08/270B**


Female plugs with clamping-yoke screw connection. The female plugs provide space for labelling and can be coded.

- 0.2 - 2.5 mm<sup>2</sup> (IEC) / 26 - 12 AWG (UL)
- 400 V (IEC) / 300 V (UL)
- 15 A (IEC) / 10 A (UL)

**General ordering data**

| Type                            | Order No.                  | Version   | GTIN (EAN)    | Qty.      | Product data  | Packaging |
|---------------------------------|----------------------------|---|---------------|-----------|---|-----------|
| BLZ<br>5.08/05/270B<br>SN OR BX | <a href="#">1559960000</a> | PCB plug-in connector,<br>female plug, 5.08 mm, No.<br>of poles: 5, 270°, Clamping<br>yoke connection, Clamping<br>range, rated connection,<br>max.: 3.31 mm <sup>2</sup> , Box | 4008190123253 | 66 pc(s). | IEC: 400 V / 15 A / 0.2 - 2.5 mm <sup>2</sup><br>UL: 300 V / 10 A / AWG 26 - AWG 12 | Box       |
| BLZ<br>5.08/05/270B<br>SN BK BX | <a href="#">1559910000</a> | PCB plug-in connector,<br>female plug, 5.08 mm, No.<br>of poles: 5, 270°, Clamping<br>yoke connection, Clamping<br>range, rated connection,<br>max.: 3.31 mm <sup>2</sup> , Box | 4008190269685 | 66 pc(s). | IEC: 400 V / 15 A / 0.2 - 2.5 mm <sup>2</sup><br>UL: 300 V / 10 A / AWG 26 - AWG 12 | Box       |

**BLZF 5.08/270B**


Female plugs with tension-clamp wire connection system. The female plugs provide space for labelling and can be coded.

- 0.2 - 2.5 mm<sup>2</sup> (IEC) / 26 - 12 AWG (UL)
- 400 V (IEC) / 300 V (UL)
- 16.5 A (IEC) / 10 A (UL)

**General ordering data**

| Type                             | Order No.                  | Version  | GTIN (EAN)    | Qty.      | Product data  | Packaging |
|----------------------------------|----------------------------|--|---------------|-----------|---|-----------|
| BLZF<br>5.08/05/270B<br>SN BK BX | <a href="#">1672660000</a> | PCB plug-in connector,<br>female plug, 5.08 mm,<br>No. of poles: 5, 270°,<br>Tension clamp connection,<br>Clamping range, rated<br>connection, max.: 3.31<br>mm <sup>2</sup> , Box | 4008190434373 | 66 pc(s). | IEC: 400 V / 16.5 A / 0.2 - 2.5 mm <sup>2</sup><br>UL: 300 V / 10 A / AWG 26 - AWG 12 | Box       |

## OMNIMATE Signal - series BL/SL 5.08 SLDF 5.08 L/F 5 SN OR BX

**Weidmüller Interface GmbH & Co. KG**  
 Klingenbergstraße 16  
 D-32758 Detmold  
 Germany  
 Fon: +49 5231 14-0  
 Fax: +49 5231 14-292083  
 www.weidmueller.com

### Mating connector (conditionally pluggable)

|                                  |                            |  |                         |   |     |
|----------------------------------|----------------------------|--|-------------------------|---|-----|
| BLZF<br>5.08/05/270B<br>SN OR BX | <a href="#">1672430000</a> | PCB plug-in connector,<br>female plug, 5.08 mm,<br>No. of poles: 5, 270°,<br>Tension clamp connection,<br>Clamping range, rated<br>connection, max.: 3.31<br>mm <sup>2</sup> , Box | 4008190434144 66 pc(s). | IEC: 400 V / 16.5 A / 0.2 - 2.5 mm <sup>2</sup><br>UL: 300 V / 10 A / AWG 26 - AWG 12 | Box |
|----------------------------------|----------------------------|--|-------------------------|---|-----|

### BLL 5.08/180B



Female header for PCB mounting. The solder pin length is optimised for wave flow soldering.

- 400 V (IEC) / 300 V (UL)
- 23 A (IEC) / 15 A (UL)

#### General ordering data

| Type                               | Order No.                  | Version  | GTIN (EAN)              | Qty. | Product data                          | Packaging |
|------------------------------------|----------------------------|--|-------------------------|------|---------------------------------------|-----------|
| BLL<br>5.08/05/180B<br>3.2SN OR BX | <a href="#">1682760000</a> | PCB plug-in connector,<br>female header, Dovetails<br>for fixing blocks, Solder<br>connection, 5.08 mm, No.<br>of poles: 5, 180°, Solder pin<br>length (l): 3.2 mm, tinned,<br>Orange, Box | 4008190474522 66 pc(s). |      | IEC: 400 V / 23 A<br>UL: 300 V / 15 A | Box       |

### ZZ\_Varianten



Female plugs with clamping-yoke screw for wire connection with straight (180°) outlet direction. The female plugs provide space for labelling and can be coded.

- 0.2 - 2.5 mm<sup>2</sup> (IEC) / 26 - 12 AWG (UL)
- 400 V (IEC) / 300 V (UL)
- 19 A (IEC) / 15 A (UL)

#### General ordering data

| Type                              | Order No.                  | Version   | GTIN (EAN)              | Qty. | Product data  | Packaging |
|-----------------------------------|----------------------------|---|-------------------------|------|---|-----------|
| BLZ<br>5.08/05/180B<br>SN DKGX BX | <a href="#">1529050000</a> | PCB plug-in connector,<br>female plug, 5.08 mm, No.<br>of poles: 5, 180°, Clamping<br>yoke connection, Clamping<br>range, rated connection,<br>max.: 3.31 mm <sup>2</sup> , Box | 4008190290214 50 pc(s). |      | IEC: 400 V / 19 A / 0.2 - 2.5 mm <sup>2</sup><br>UL: 300 V / 15 A / AWG 26 - AWG 12 | Box       |



**OMNIMATE Signal - series BL/SL 5.08  
SLDF 5.08 L/F 5 SN OR BX**

**Weidmüller Interface GmbH & Co. KG**  
Klingenbergstraße 16  
D-32758 Detmold  
Germany  
Fon: +49 5231 14-0  
Fax: +49 5231 14-292083  
www.weidmueller.com

**Mating connector (conditionally pluggable)**
**BLDT 5.08B**


Female plugs with two clamping-yoke screw connections per pole for wire connections with 90° and 270° outlet directions. The female plugs provide space for labelling and can be coded.

- 0.2 - 2.5 mm<sup>2</sup> (IEC) / 26 - 12 AWG (UL)
- 400 V (IEC) / 300 V (UL)
- 14 A (IEC) / 10 A (UL)

**General ordering data**

| Type                           | Order No.                  | Version   | GTIN (EAN)    | Qty.      | Product data  | Packaging |
|--------------------------------|----------------------------|---|---------------|-----------|---|-----------|
| BLDT<br>5.08/05/-B<br>SN OR BX | <a href="#">1651770000</a> | PCB plug-in connector,<br>female plug, 5.08 mm,<br>No. of poles: 5, 180°, TOP<br>connection, Clamping<br>range, rated connection,<br>max.: 3.31 mm <sup>2</sup> , Box | 4008190400453 | 50 pc(s). | IEC: 400 V / 14 A / 0.2 - 2.5 mm <sup>2</sup><br>UL: 300 V / 10 A / AWG 26 - AWG 12 | Box       |
| BLDT<br>5.08/05/-B<br>SN BK BX | <a href="#">1673810000</a> | PCB plug-in connector,<br>female plug, 5.08 mm,<br>No. of poles: 5, 180°, TOP<br>connection, Clamping<br>range, rated connection,<br>max.: 3.31 mm <sup>2</sup> , Box | 4008190435547 | 50 pc(s). | IEC: 400 V / 14 A / 0.2 - 2.5 mm <sup>2</sup><br>UL: 300 V / 10 A / AWG 26 - AWG 12 | Box       |

**BLZ 5.08/180B**


Female plugs with clamping-yoke screw for wire connection with straight (180°) outlet direction. The female plugs provide space for labelling and can be coded.

- 0.2 - 2.5 mm<sup>2</sup> (IEC) / 26 - 12 AWG (UL)
- 400 V (IEC) / 300 V (UL)
- 19 A (IEC) / 15 A (UL)

**General ordering data**

| Type                            | Order No.                  | Version   | GTIN (EAN)    | Qty.      | Product data  | Packaging |
|---------------------------------|----------------------------|---|---------------|-----------|---|-----------|
| BLZ<br>5.08/05/180B<br>SN BK BX | <a href="#">1529010000</a> | PCB plug-in connector,<br>female plug, 5.08 mm, No.<br>of poles: 5, 180°, Clamping<br>yoke connection, Clamping<br>range, rated connection,<br>max.: 3.31 mm <sup>2</sup> , Box | 4008190125189 | 50 pc(s). | IEC: 400 V / 19 A / 0.2 - 2.5 mm <sup>2</sup><br>UL: 300 V / 15 A / AWG 26 - AWG 12 | Box       |
| BLZ<br>5.08/05/180B<br>SN OR BX | <a href="#">1529060000</a> | PCB plug-in connector,<br>female plug, 5.08 mm, No.<br>of poles: 5, 180°, Clamping<br>yoke connection, Clamping   | 4008190155308 | 50 pc(s). | IEC: 400 V / 19 A / 0.2 - 2.5 mm <sup>2</sup><br>UL: 300 V / 15 A / AWG 26 - AWG 12 | Box       |

**OMNIMATE Signal - series BL/SL 5.08  
SLDF 5.08 L/F 5 SN OR BX**

**Weidmüller Interface GmbH & Co. KG**  
Klingenbergstraße 16  
D-32758 Detmold  
Germany  
Fon: +49 5231 14-0  
Fax: +49 5231 14-292083  
www.weidmueller.com

**Mating connector (conditionally pluggable)**

range, rated connection,  
max.: 3.31 mm<sup>2</sup>, Box

**BLZP 5.08/225B SN**


Clamping-yoke wire connection with right-angled (90° or 270°) or angled (225°) outlet direction. The female plugs provide space for labelling and can be coded. Can be fastened with flange or release latch. They also feature the integrated plus/minus screw, protection from under insertion of wire, and are delivered with open clamping yoke.

- 0.2 – 2.5 mm<sup>2</sup> (IEC) / 26-12 AWG (UL)
- 400 V (IEC) / 300 V (UL)
- 17.5 A (IEC) / 10 A (UL)

**General ordering data**

| Type                               | Order No.                  | Version  | GTIN (EAN)    | Qty.      | Product data  | Packaging |
|------------------------------------|----------------------------|--|---------------|-----------|---|-----------|
| BLZP<br>5.08HC/05/225B<br>SN OR BX | <a href="#">1945780000</a> | PCB plug-in connector,<br>female plug, 5.08 mm, No.<br>of poles: 5, 225°, Clamping<br>yoke connection, Clamping<br>range, rated connection,<br>max.: 4 mm <sup>2</sup> , Box | 4032248621255 | 66 pc(s). | IEC: 400 V / 17.5 A / 0.2 - 4 mm <sup>2</sup><br>UL: 300 V / 15 A / AWG 30 - AWG 12 | Box       |
| BLZP<br>5.08HC/05/225B<br>SN BK BX | <a href="#">1946010000</a> | PCB plug-in connector,<br>female plug, 5.08 mm, No.<br>of poles: 5, 225°, Clamping<br>yoke connection, Clamping<br>range, rated connection,<br>max.: 4 mm <sup>2</sup> , Box | 4032248621538 | 66 pc(s). | IEC: 400 V / 17.5 A / 0.2 - 4 mm <sup>2</sup><br>UL: 300 V / 15 A / AWG 30 - AWG 12 | Box       |

**BLZ 5.08/225B**


Female plugs with clamping-yoke screw for wire connection with 225° outlet direction. The female plugs provide space for labelling and can be coded.

- 0.2 - 2.5 mm<sup>2</sup> (IEC) / 26 - 12 AWG (UL)
- 400 V (IEC) / 300 V (UL)
- 16.5 A (IEC) / 10 A (UL)

**General ordering data**

| Type                            | Order No.                  | Version   | GTIN (EAN)    | Qty.      | Product data  | Packaging |
|---------------------------------|----------------------------|---|---------------|-----------|---|-----------|
| BLZ<br>5.08/05/225B<br>SN BK BX | <a href="#">1742360000</a> | PCB plug-in connector,<br>female plug, 5.08 mm, No.<br>of poles: 5, 225°, Clamping<br>yoke connection, Clamping<br>range, rated connection,<br>max.: 3.31 mm <sup>2</sup> , Box | 4032248049790 | 66 pc(s). | IEC: 400 V / 16.5 A / 0.2 - 2.5 mm <sup>2</sup><br>UL: 300 V / 10 A / AWG 26 - AWG 12 | Box       |

**OMNIMATE Signal - series BL/SL 5.08  
SLDF 5.08 L/F 5 SN OR BX**

**Weidmüller Interface GmbH & Co. KG**  
Klingenbergstraße 16  
D-32758 Detmold  
Germany  
Fon: +49 5231 14-0  
Fax: +49 5231 14-292083  
www.weidmueller.com

**Mating connector (conditionally pluggable)**

BLZ [1742130000](#)  
5.08/05/225B  
SN OR BX

PCB plug-in connector, 4008190246778 66 pc(s).  
female plug, 5.08 mm, No.  
of poles: 5, 225°, Clamping  
yoke connection, Clamping  
range, rated connection,  
max.: 3.31 mm<sup>2</sup>, Box

IEC: 400 V / 16.5 A / 0.2 - 2.5 mm<sup>2</sup> Box  
UL: 300 V / 10 A / AWG 26 - AWG 12

**OMNIMATE Signal - series BL/SL 5.08  
SLDF 5.08 L/F 5 SN OR BX**

**Weidmüller Interface GmbH & Co. KG**  
Klingenbergstraße 16  
D-32758 Detmold  
Germany  
Fon: +49 5231 14-0  
Fax: +49 5231 14-292083  
www.weidmueller.com

**Mating connector (fully pluggable)**
**BLZF 5.08/270**


Female plugs with tension-clamp wire connection system. The female plugs provide space for labelling and can be coded.

- 0.2 - 2.5 mm<sup>2</sup> (IEC) / 26 - 12 AWG (UL)
- 400 V (IEC) / 300 V (UL)
- 16.5 A (IEC) / 10 A (UL)

**General ordering data**

| Type                            | Order No.                  | Version  | GTIN (EAN)              | Qty. | Product data  | Packaging |
|---------------------------------|----------------------------|--|-------------------------|------|---|-----------|
| BLZF<br>5.08/05/270<br>SN BK BX | <a href="#">1672200000</a> | PCB plug-in connector,<br>female plug, 5.08 mm,<br>No. of poles: 5, 270°,<br>Tension clamp connection,<br>Clamping range, rated<br>connection, max.: 3.31<br>mm <sup>2</sup> , Box | 4008190433918 72 pc(s). |      | IEC: 400 V / 16.5 A / 0.2 - 2.5 mm <sup>2</sup><br>UL: 300 V / 10 A / AWG 26 - AWG 12 | Box       |
| BLZF<br>5.08/05/270<br>SN OR BX | <a href="#">1671970000</a> | PCB plug-in connector,<br>female plug, 5.08 mm,<br>No. of poles: 5, 270°,<br>Tension clamp connection,<br>Clamping range, rated<br>connection, max.: 3.31<br>mm <sup>2</sup> , Box | 4008190433680 72 pc(s). |      | IEC: 400 V / 16.5 A / 0.2 - 2.5 mm <sup>2</sup><br>UL: 300 V / 10 A / AWG 26 - AWG 12 | Box       |

**BLZ 5.08/180**


Female plugs with clamping-yoke screw for wire connection with straight (180°) outlet direction. The female plugs provide space for labelling and can be coded.

- 0.2 - 2.5 mm<sup>2</sup> (IEC) / 26 - 12 AWG (UL)
- 400 V (IEC) / 300 V (UL)
- 19 A (IEC) / 15 A (UL)

**General ordering data**

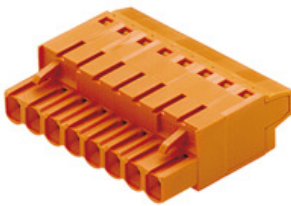
| Type                           | Order No.                  | Version   | GTIN (EAN)              | Qty. | Product data  | Packaging |
|--------------------------------|----------------------------|---|-------------------------|------|---|-----------|
| BLZ<br>5.08/05/180<br>SN BK BX | <a href="#">1526710000</a> | PCB plug-in connector,<br>female plug, 5.08 mm, No.<br>of poles: 5, 180°, Clamping<br>yoke connection, Clamping<br>range, rated connection,<br>max.: 3.31 mm <sup>2</sup> , Box | 4008190287856 50 pc(s). |      | IEC: 400 V / 19 A / 0.2 - 2.5 mm <sup>2</sup><br>UL: 300 V / 15 A / AWG 26 - AWG 12 | Box       |
| BLZ<br>5.08/05/180<br>SN OR BX | <a href="#">1526760000</a> | PCB plug-in connector,<br>female plug, 5.08 mm, No.<br>of poles: 5, 180°, Clamping<br>yoke connection, Clamping   | 4008190052287 50 pc(s). |      | IEC: 400 V / 19 A / 0.2 - 2.5 mm <sup>2</sup><br>UL: 300 V / 15 A / AWG 26 - AWG 12 | Box       |

**OMNIMATE Signal - series BL/SL 5.08  
SLDF 5.08 L/F 5 SN OR BX**

**Weidmüller Interface GmbH & Co. KG**  
Klingenbergstraße 16  
D-32758 Detmold  
Germany  
Fon: +49 5231 14-0  
Fax: +49 5231 14-292083  
www.weidmueller.com

**Mating connector (fully pluggable)**

range, rated connection,  
max.: 3.31 mm<sup>2</sup>, Box

**BLT 5.08**


Female plugs with TOP screw system for connecting wires with straight 180° outlet direction. The female plugs provide space for labelling and can be coded.

- 0.2 - 2.5 mm<sup>2</sup> (IEC) / 26 - 14 AWG (UL)
- 400 V (IEC) / 300 V (UL)
- 17 A (IEC) / 10 A (UL)

**General ordering data**

| Type                             | Order No.                  | Version  | GTIN (EAN)    | Qty.      | Product data  | Packaging |
|----------------------------------|----------------------------|--|---------------|-----------|---|-----------|
| BLT<br>5.08HC/05/180<br>SN OR BX | <a href="#">1499860000</a> | PCB plug-in connector,<br>female plug, 5.08 mm,<br>No. of poles: 5, 180°, TOP<br>connection, Clamping<br>range, rated connection,<br>max.: 2.5 mm <sup>2</sup> , Box | 4008190030285 | 72 pc(s). | IEC: 400 V / 17 A / 0.2 - 2.5 mm <sup>2</sup><br>UL: 300 V / 13 A / AWG 26 - AWG 14 | Box       |
| BLT<br>5.08HC/05/180<br>SN BK BX | <a href="#">1499810000</a> | PCB plug-in connector,<br>female plug, 5.08 mm,<br>No. of poles: 5, 180°, TOP<br>connection, Clamping<br>range, rated connection,<br>max.: 2.5 mm <sup>2</sup> , Box | 4008190861728 | 72 pc(s). | IEC: 400 V / 17 A / 0.2 - 2.5 mm <sup>2</sup><br>UL: 300 V / 13 A / AWG 26 - AWG 14 | Box       |

**BLZF 5.08/90**


Female plugs with tension-clamp wire connection system. The female plugs provide space for labelling and can be coded.

- 0.2 - 2.5 mm<sup>2</sup> (IEC) / 26 - 12 AWG (UL)
- 400 V (IEC) / 300 V (UL)
- 16.5 A (IEC) / 10 A (UL)

**General ordering data**

| Type                           | Order No.                  | Version   | GTIN (EAN)    | Qty.      | Product data  | Packaging |
|--------------------------------|----------------------------|---|---------------|-----------|---|-----------|
| BLZF<br>5.08/05/90<br>SN OR BX | <a href="#">1670820000</a> | PCB plug-in connector,<br>female plug, 5.08 mm,<br>No. of poles: 5, 90°,<br>Tension clamp connection,<br>Clamping range, rated<br>connection, max.: 3.31<br>mm <sup>2</sup> , Box | 4008190432423 | 72 pc(s). | IEC: 400 V / 16.5 A / 0.2 - 2.5 mm <sup>2</sup><br>UL: 300 V / 10 A / AWG 26 - AWG 12 | Box       |

## OMNIMATE Signal - series BL/SL 5.08 SLDF 5.08 L/F 5 SN OR BX

**Weidmüller Interface GmbH & Co. KG**  
 Klingenbergstraße 16  
 D-32758 Detmold  
 Germany  
 Fon: +49 5231 14-0  
 Fax: +49 5231 14-292083  
 www.weidmueller.com

### Mating connector (fully pluggable)

|                                |                            |   |                         |   |
|--------------------------------|----------------------------|---|-------------------------|---|
| BLZF<br>5.08/05/90<br>SN BK BX | <a href="#">1671050000</a> | PCB plug-in connector,<br>female plug, 5.08 mm,<br>No. of poles: 5, 90°,<br>Tension clamp connection,<br>Clamping range, rated<br>connection, max.: 3.31<br>mm <sup>2</sup> , Box | 4008190432720 72 pc(s). | IEC: 400 V / 16.5 A / 0.2 - 2.5 mm <sup>2</sup> Box<br>UL: 300 V / 10 A / AWG 26 - AWG 12 |
|--------------------------------|----------------------------|---|-------------------------|---|

### BLZ 5.08/270



Female plugs with clamping-yoke screw connection. The female plugs provide space for labelling and can be coded.

- 0.2 - 2.5 mm<sup>2</sup> (IEC) / 26 - 12 AWG (UL)
- 400 V (IEC) / 300 V (UL)
- 15 A (IEC) / 10 A (UL)

### General ordering data

| Type                           | Order No.                  | Version   | GTIN (EAN)              | Qty. | Product data  | Packaging |
|--------------------------------|----------------------------|---|-------------------------|------|---|-----------|
| BLZ<br>5.08/05/270<br>SN OR BX | <a href="#">1557660000</a> | PCB plug-in connector,<br>female plug, 5.08 mm, No.<br>of poles: 5, 270°, Clamping<br>yoke connection, Clamping<br>range, rated connection,<br>max.: 3.31 mm <sup>2</sup> , Box | 4008190144012 72 pc(s). |      | IEC: 400 V / 15 A / 0.2 - 2.5 mm <sup>2</sup><br>UL: 300 V / 10 A / AWG 26 - AWG 12 | Box       |
| BLZ<br>5.08/05/270<br>SN BK BX | <a href="#">1557610000</a> | PCB plug-in connector,<br>female plug, 5.08 mm, No.<br>of poles: 5, 270°, Clamping<br>yoke connection, Clamping<br>range, rated connection,<br>max.: 3.31 mm <sup>2</sup> , Box | 4008190269456 72 pc(s). |      | IEC: 400 V / 15 A / 0.2 - 2.5 mm <sup>2</sup><br>UL: 300 V / 10 A / AWG 26 - AWG 12 | Box       |

### BL 5.08



Female plugs with leaf-spring wire connection system. The female plugs provide space for labelling.

- 0.2 - 1.5 mm<sup>2</sup> (IEC) / 26 - 14 AWG (UL)
- 400 V (IEC) / 300 V (UL)
- 11 A (IEC) / 10 A (UL)

### General ordering data

| Type                          | Order No.                  | Version   | GTIN (EAN)              | Qty. | Product data  | Packaging |
|-------------------------------|----------------------------|---|-------------------------|------|---|-----------|
| BL<br>5.08/05/180<br>SN OR BX | <a href="#">1716350000</a> | PCB plug-in connector,<br>female plug, 5.08 mm,<br>No. of poles: 5, 180°,<br>Pressure clamp connection, | 4008190376383 50 pc(s). |      | IEC: 400 V / 14 A / 0.2 - 1.5 mm <sup>2</sup><br>UL: 300 V / 10 A / AWG 26 - AWG 14 | Box       |

Creation date December 9, 2013 1:38:31 AM CET

## OMNIMATE Signal - series BL/SL 5.08 SLDF 5.08 L/F 5 SN OR BX

**Weidmüller Interface GmbH & Co. KG**  
 Klingenbergstraße 16  
 D-32758 Detmold  
 Germany  
 Fon: +49 5231 14-0  
 Fax: +49 5231 14-292083  
 www.weidmueller.com

### Mating connector (fully pluggable)

|                                 |                            | Clamping range, rated connection, max.: 2.08 mm <sup>2</sup> , Box  |                         |   |
|---------------------------------|----------------------------|---|-------------------------|---|
| BL<br>5.08/05/180<br>SN BK BX   | <a href="#">1716500000</a> | PCB plug-in connector, female plug, 5.08 mm, No. of poles: 5, 180°, Pressure clamp connection, Clamping range, rated connection, max.: 2.08 mm <sup>2</sup> , Box | 4008190376543 50 pc(s). | IEC: 400 V / 14 A / 0.2 - 1.5 mm <sup>2</sup><br>UL: 300 V / 10 A / AWG 26 - AWG 14 |
| BL<br>5.08/05/180<br>SN DKGX BX | <a href="#">1723860000</a> | PCB plug-in connector, female plug, 5.08 mm, No. of poles: 5, 180°, Pressure clamp connection, Clamping range, rated connection, max.: 2.08 mm <sup>2</sup> , Box | 4008190376222 50 pc(s). | IEC: 400 V / 14 A / 0.2 - 1.5 mm <sup>2</sup><br>UL: 300 V / 10 A / AWG 26 - AWG 14 |

### BLDZ DN 5.08F AU



Female plugs with two clamping-yoke screw connections per pole. The integrated cross-connection enables the signals (e.g. DeviceNet) to be looped through securely. The T-type arrangement of the connections enables individual modules to be decoupled easily from the network. The test point enables manual diagnosis. The gold-plated contact system guarantees up to 1,000 plugging/unplugging operations!

- 0.2 - 2.5 mm<sup>2</sup> (IEC) / 26 - 12 AWG (UL)
- 400 V (IEC) / 300 V (UL)
- 18 A (IEC) / 15 A (UL)

### General ordering data

| Type                            | Order No.                  | Version   | GTIN (EAN)              | Qty. | Product data  | Packaging |
|---------------------------------|----------------------------|---|-------------------------|------|---|-----------|
| BLDZ<br>DN5.08/5/180F<br>GR BED | <a href="#">1919990000</a> | PCB plug-in connector, female plug, 5.08 mm, No. of poles: 5, 180°, Clamping yoke connection, Clamping range, rated connection, max.: 2.5 mm <sup>2</sup> , Box | 4032248557899 50 pc(s). |      | IEC: 400 V / 16 A / 0.2 - 2.5 mm <sup>2</sup><br>UL: 300 V / 15 A / AWG 22 - AWG 12 | Box       |

**OMNIMATE Signal - series BL/SL 5.08  
SLDF 5.08 L/F 5 SN OR BX**

**Weidmüller Interface GmbH & Co. KG**  
Klingenbergstraße 16  
D-32758 Detmold  
Germany  
Fon: +49 5231 14-0  
Fax: +49 5231 14-292083  
www.weidmueller.com

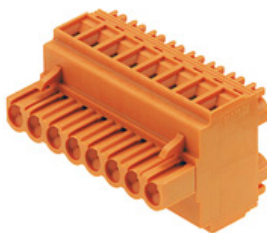
**Mating connector (fully pluggable)**
**BLZ 5.08/90**


Female plugs with clamping-yoke screw connection. The female plugs provide space for labelling and can be coded.

- 0.2 - 2.5 mm<sup>2</sup> (IEC) / 26 - 12 AWG (UL)
- 400 V (IEC) / 300 V (UL)
- 15 A (IEC) / 10 A (UL)

**General ordering data**

| Type                          | Order No.                  | Version   | GTIN (EAN)    | Qty.      | Product data  | Packaging |
|-------------------------------|----------------------------|---|---------------|-----------|---|-----------|
| BLZ<br>5.08/05/90<br>SN BK BX | <a href="#">1553010000</a> | PCB plug-in connector, female plug, 5.08 mm, No. of poles: 5, 90°, Clamping yoke connection, Clamping range, rated connection, max.: 3.31 mm <sup>2</sup> , Box | 4008190267735 | 72 pc(s). | IEC: 400 V / 15 A / 0.2 - 2.5 mm <sup>2</sup><br>UL: 300 V / 10 A / AWG 26 - AWG 12 | Box       |
| BLZ<br>5.08/05/90<br>SN OR BX | <a href="#">1553060000</a> | PCB plug-in connector, female plug, 5.08 mm, No. of poles: 5, 90°, Clamping yoke connection, Clamping range, rated connection, max.: 3.31 mm <sup>2</sup> , Box | 4008190081331 | 72 pc(s). | IEC: 400 V / 15 A / 0.2 - 2.5 mm <sup>2</sup><br>UL: 300 V / 10 A / AWG 26 - AWG 12 | Box       |

**BLDT 5.08**


Female plugs with two clamping-yoke screw connections per pole for wire connections with 90° and 270° outlet directions. The female plugs provide space for labelling and can be coded.

- 0.2 - 2.5 mm<sup>2</sup> (IEC) / 26 - 12 AWG (UL)
- 400 V (IEC) / 300 V (UL)
- 14 A (IEC) / 10 A (UL)

**General ordering data**

| Type                          | Order No.                  | Version  | GTIN (EAN)    | Qty.      | Product data  | Packaging |
|-------------------------------|----------------------------|--|---------------|-----------|---|-----------|
| BLDT<br>5.08/05/- SN<br>OR BX | <a href="#">1644760000</a> | PCB plug-in connector, female plug, 5.08 mm, No. of poles: 5, 180°, TOP connection, Clamping range, rated connection, max.: 3.31 mm <sup>2</sup> , Box | 4008190283971 | 50 pc(s). | IEC: 400 V / 14 A / 0.2 - 2.5 mm <sup>2</sup><br>UL: 300 V / 10 A / AWG 26 - AWG 12 | Box       |
| BLDT<br>5.08/05/- SN<br>BK BX | <a href="#">1660740000</a> | PCB plug-in connector, female plug, 5.08 mm, No. of poles: 5, 180°, TOP connection, Clamping   | 4008190417192 | 50 pc(s). | IEC: 400 V / 14 A / 0.2 - 2.5 mm <sup>2</sup><br>UL: 300 V / 10 A / AWG 26 - AWG 12 | Box       |



## OMNIMATE Signal - series BL/SL 5.08 SLDF 5.08 L/F 5 SN OR BX

**Weidmüller Interface GmbH & Co. KG**  
Klingenbergstraße 16  
D-32758 Detmold  
Germany  
Fon: +49 5231 14-0  
Fax: +49 5231 14-292083  
www.weidmueller.com

### Mating connector (fully pluggable)

range, rated connection,  
max.: 3.31 mm<sup>2</sup>, Box

#### BLZP 5.08/270 SN



Female plugs with clamping-yoke screw connection for wire connection and a right-angle (90° or 270°) outlet direction. The female plugs provide space for labelling and can be coded. Can be fastened with flange or release latch. They feature an integrated plus/minus screw, protection against false insertion under clamping yoke. They are delivered with an opened clamping yoke.

- 0.2 – 2.5 mm<sup>2</sup> (IEC) / 26-12 AWG (UL)
- 400 V (IEC) / 300 V (UL)
- 15 A (IEC) / 10 A (UL)

#### General ordering data

| Type                              | Order No.                  | Version  | GTIN (EAN)    | Qty.      | Product data  | Packaging |
|-----------------------------------|----------------------------|--|---------------|-----------|---|-----------|
| BLZP<br>5.08HC/05/270<br>SN OR BX | <a href="#">1948820000</a> | PCB plug-in connector,<br>female plug, 5.08 mm, No.<br>of poles: 5, 270°, Clamping<br>yoke connection, Clamping<br>range, rated connection,<br>max.: 4 mm <sup>2</sup> , Box | 4032248626274 | 72 pc(s). | IEC: 400 V / 15.5 A / 0.2 - 4 mm <sup>2</sup><br>UL: 300 V / 15 A / AWG 30 - AWG 12 | Box       |
| BLZP<br>5.08HC/05/270<br>SN BK BX | <a href="#">1949050000</a> | PCB plug-in connector,<br>female plug, 5.08 mm, No.<br>of poles: 5, 270°, Clamping<br>yoke connection, Clamping<br>range, rated connection,<br>max.: 4 mm <sup>2</sup> , Box | 4032248626502 | 72 pc(s). | IEC: 400 V / 15.5 A / 0.2 - 4 mm <sup>2</sup><br>UL: 300 V / 15 A / AWG 30 - AWG 12 | Box       |

#### BLL 5.08/90



Female header for PCB mounting. The solder pin length is optimised for wave flow soldering.

- 400 V (IEC) / 300 V (UL)
- 23 A (IEC) / 15 A (UL)

#### General ordering data

| Type                              | Order No.                  | Version  | GTIN (EAN)    | Qty.      | Product data                          | Packaging |
|-----------------------------------|----------------------------|--|---------------|-----------|---------------------------------------|-----------|
| BLL<br>5.08/05/90<br>3.2 SN OR BX | <a href="#">1622970000</a> | PCB plug-in connector,<br>female header, closed side,<br>Solder connection, 5.08<br>mm, No. of poles: 5, 90°,<br>Solder pin length (l): 3.2<br>mm, tinned, Orange, Box | 4008190194017 | 72 pc(s). | IEC: 400 V / 23 A<br>UL: 300 V / 15 A | Box       |

**OMNIMATE Signal - series BL/SL 5.08  
SLDF 5.08 L/F 5 SN OR BX**

**Weidmüller Interface GmbH & Co. KG**  
Klingenbergstraße 16  
D-32758 Detmold  
Germany  
Fon: +49 5231 14-0  
Fax: +49 5231 14-292083  
www.weidmuller.com

**Mating connector (fully pluggable)**
**BLZP 5.08/225 SN**


Clamping-yoke wire connection with right-angled (90° or 270°) or angled (225°) outlet direction. The female plugs provide space for labelling and can be coded. Can be fastened with flange or release latch. They also feature the integrated plus/minus screw, protection from under insertion of wire, and are delivered with open clamping yoke.

- 0.2 – 2.5 mm<sup>2</sup> (IEC) / 26-12 AWG (UL)
- 400 V (IEC) / 300 V (UL)
- 17.5 A (IEC) / 10 A (UL)

**General ordering data**

| Type                              | Order No.                  | Version  | GTIN (EAN)    | Qty.      | Product data  | Packaging |
|-----------------------------------|----------------------------|--|---------------|-----------|---|-----------|
| BLZP<br>5.08HC/05/225<br>SN OR BX | <a href="#">1946280000</a> | PCB plug-in connector,<br>female plug, 5.08 mm, No.<br>of poles: 5, 225°, Clamping<br>yoke connection, Clamping<br>range, rated connection,<br>max.: 4 mm <sup>2</sup> , Box | 4032248621859 | 72 pc(s). | IEC: 400 V / 17.5 A / 0.2 - 4 mm <sup>2</sup><br>UL: 300 V / 15 A / AWG 30 - AWG 12 | Box       |
| BLZP<br>5.08HC/05/225<br>SN BK BX | <a href="#">1946590000</a> | PCB plug-in connector,<br>female plug, 5.08 mm, No.<br>of poles: 5, 225°, Clamping<br>yoke connection, Clamping<br>range, rated connection,<br>max.: 4 mm <sup>2</sup> , Box | 4032248622368 | 72 pc(s). | IEC: 400 V / 17.5 A / 0.2 - 4 mm <sup>2</sup><br>UL: 300 V / 15 A / AWG 30 - AWG 12 | Box       |

**BLZF 5.08/180**


Female plugs with tension-clamp wire connection system, straight 180° outlet direction. The female plugs provide space for labelling and can be coded.

- 0.2 - 2.5 mm<sup>2</sup> (IEC) / 26 - 12 AWG (UL)
- 400 V (IEC) / 300 V (UL)
- 17 A (IEC) / 15 A (UL)

**General ordering data**

| Type                            | Order No.                  | Version  | GTIN (EAN)    | Qty.      | Product data  | Packaging |
|---------------------------------|----------------------------|--|---------------|-----------|---|-----------|
| BLZF<br>5.08/05/180<br>SN BK BX | <a href="#">1707720000</a> | PCB plug-in connector,<br>female plug, 5.08 mm,<br>No. of poles: 5, 180°,<br>Tension clamp connection,<br>Clamping range, rated<br>connection, max.: 3.31<br>mm <sup>2</sup> , Box | 4008190316723 | 72 pc(s). | IEC: 400 V / 17 A / 0.2 - 2.5 mm <sup>2</sup><br>UL: 300 V / 15 A / AWG 26 - AWG 12 | Box       |
| BLZF<br>5.08/05/180<br>SN OR BX | <a href="#">1707490000</a> | PCB plug-in connector,<br>female plug, 5.08 mm,<br>No. of poles: 5, 180°,<br>Tension clamp connection,<br>Clamping range, rated  | 4008190395865 | 72 pc(s). | IEC: 400 V / 17 A / 0.2 - 2.5 mm <sup>2</sup><br>UL: 300 V / 15 A / AWG 26 - AWG 12 | Box       |

**OMNIMATE Signal - series BL/SL 5.08  
SLDF 5.08 L/F 5 SN OR BX**

**Weidmüller Interface GmbH & Co. KG**  
Klingenbergstraße 16  
D-32758 Detmold  
Germany  
Fon: +49 5231 14-0  
Fax: +49 5231 14-292083  
www.weidmueller.com

**Mating connector (fully pluggable)**

connection, max.: 3.31  
mm<sup>2</sup>, Box

**BLZ 5.08/225**


Female plugs with clamping-yoke screw for wire connection with 225° outlet direction. The female plugs provide space for labelling and can be coded.

- 0.2 - 2.5 mm<sup>2</sup> (IEC) / 26 - 12 AWG (UL)
- 400 V (IEC) / 300 V (UL)
- 16.5 A (IEC) / 10 A (UL)

**General ordering data**

| Type                           | Order No.                  | Version   | GTIN (EAN)    | Qty.      | Product data  | Packaging |
|--------------------------------|----------------------------|---|---------------|-----------|---|-----------|
| BLZ<br>5.08/05/225<br>SN BK BX | <a href="#">1741900000</a> | PCB plug-in connector,<br>female plug, 5.08 mm, No.<br>of poles: 5, 225°, Clamping<br>yoke connection, Clamping<br>range, rated connection,<br>max.: 3.31 mm <sup>2</sup> , Box | 4008190255596 | 72 pc(s). | IEC: 400 V / 16.5 A / 0.2 - 2.5 mm <sup>2</sup><br>UL: 300 V / 10 A / AWG 26 - AWG 12 | Box       |
| BLZ<br>5.08/05/225<br>SN OR BX | <a href="#">1741670000</a> | PCB plug-in connector,<br>female plug, 5.08 mm, No.<br>of poles: 5, 225°, Clamping<br>yoke connection, Clamping<br>range, rated connection,<br>max.: 3.31 mm <sup>2</sup> , Box | 4032248049844 | 72 pc(s). | IEC: 400 V / 16.5 A / 0.2 - 2.5 mm <sup>2</sup><br>UL: 300 V / 10 A / AWG 26 - AWG 12 | Box       |

**BLIDC 5.08**


Female plugs with IDC wire connection system. The female plugs provide space for labelling and can be coded.

- 0.35 - 0.75 mm<sup>2</sup> (IEC) / 22 - 20 AWG (UL)
- 400 V (IEC) / 300 V (UL)
- 11 A (IEC) / 5 A (UL)

**General ordering data**

| Type                             | Order No.                  | Version   | GTIN (EAN)    | Qty.      | Product data  | Packaging |
|----------------------------------|----------------------------|---|---------------|-----------|---|-----------|
| BLIDC<br>5.08/05/180<br>SN OR BX | <a href="#">1724970000</a> | PCB plug-in connector,<br>female plug, 5.08 mm,<br>No. of poles: 5, 180°, IDC<br>terminal, Clamping range,<br>rated connection, max.:<br>0.75 mm <sup>2</sup> , Box | 4008190377311 | 50 pc(s). | IEC: 400 V / 11 A / 0.5 - 0.75 mm <sup>2</sup><br>UL: 300 V / 5 A / AWG 22 - AWG 20 | Box       |

**OMNIMATE Signal - series BL/SL 5.08  
SLDF 5.08 L/F 5 SN OR BX**

**Weidmüller Interface GmbH & Co. KG**  
Klingenbergstraße 16  
D-32758 Detmold  
Germany  
Fon: +49 5231 14-0  
Fax: +49 5231 14-292083  
www.weidmueller.com

**Mating connector (fully pluggable)**
**BLZP 5.08/180 SN**


Female plugs with clamping-yoke screw for wire connection with straight (180°) outlet direction. The female plugs provide space for labelling and can be coded. Can be fastened with flange or release latch. They also feature the integrated plus/minus screw, protection from under insertion of wire, and are delivered with open clamping yoke.

- 0.2 – 2.5 mm<sup>2</sup> (IEC) / 26-12 AWG (UL)
- 400 V (IEC) / 300 V (UL)
- 19 A (IEC) / 15 A (UL)

**General ordering data**

| Type                            | Order No.                  | Version  | GTIN (EAN)    | Qty.      | Product data  | Packaging |
|---------------------------------|----------------------------|--|---------------|-----------|---|-----------|
| BLZP<br>5.08/05/180<br>SN OR BX | <a href="#">1943610000</a> | PCB plug-in connector,<br>female plug, 5.08 mm, No.<br>of poles: 5, 180°, Clamping<br>yoke connection, Clamping<br>range, rated connection,<br>max.: 4 mm <sup>2</sup> , Box | 4032248617609 | 45 pc(s). | IEC: 400 V / 19 A / 0.2 - 4 mm <sup>2</sup><br>UL: 300 V / 15 A / AWG 30 - AWG 12 | Box       |
| BLZP<br>5.08/05/180<br>SN BK BX | <a href="#">1943840000</a> | PCB plug-in connector,<br>female plug, 5.08 mm, No.<br>of poles: 5, 180°, Clamping<br>yoke connection, Clamping<br>range, rated connection,<br>max.: 4 mm <sup>2</sup> , Box | 4032248617876 | 45 pc(s). | IEC: 400 V / 19 A / 0.2 - 4 mm <sup>2</sup><br>UL: 300 V / 15 A / AWG 30 - AWG 12 | Box       |

**BLL 5.08/180**


Female header for PCB mounting. The solder pin length is optimised for wave flow soldering.

- 400 V (IEC) / 300 V (UL)
- 23 A (IEC) / 15 A (UL)

**General ordering data**

| Type                               | Order No.                  | Version   | GTIN (EAN)    | Qty.      | Product data                          | Packaging |
|------------------------------------|----------------------------|---|---------------|-----------|---------------------------------------|-----------|
| BLL<br>5.08/05/180<br>3.2 SN OR BX | <a href="#">1630740000</a> | PCB plug-in connector,<br>female header, closed side,<br>Solder connection, 5.08<br>mm, No. of poles: 5, 180°,<br>Solder pin length (l): 3.2<br>mm, tinned, Orange, Box | 4008190204167 | 72 pc(s). | IEC: 400 V / 23 A<br>UL: 300 V / 15 A | Box       |

**OMNIMATE Signal - series BL/SL 5.08  
SLDF 5.08 L/F 5 SN OR BX**

**Weidmüller Interface GmbH & Co. KG**  
Klingenbergstraße 16  
D-32758 Detmold  
Germany  
Fon: +49 5231 14-0  
Fax: +49 5231 14-292083  
www.weidmueller.com

**Mating connector (fully pluggable)**
**BLF 5.08/90 SN**


Just as reliable as the tried-and-tested original, with innovation in detail: the BLF 5.08, PUSH-IN version of the BLZ 5.08 female header, features a new connection system and a more compact design. Weidmüller innovative PUSH-IN spring connection features a trend-setting, tool-free wire connection system that is simple to operate. In terms of versatility, the BLF 5.08 offers just as much as the older versions:

- The choice of three wire outlet directions offers you proven design flexibility for your applications.
- Four flange variations, including the patented release latch, so you can design the interlock based on the requirements of the user.
- Use the BLF 5.08 and SL 5.08HC plug combination in order to reach the max. rated specifications.

**General ordering data**

| Type                            | Order No.                  | Version  | GTIN (EAN)    | Qty.      | Product data   | Packaging |
|---------------------------------|----------------------------|--|---------------|-----------|--|-----------|
| BLF<br>5.08HC/05/90<br>SN OR BX | <a href="#">1001560000</a> | PCB plug-in connector,<br>female plug, 5.08 mm,<br>No. of poles: 5, 90°, PUSH<br>IN spring connection,<br>Clamping range, rated<br>connection, max.: 3.31<br>mm <sup>2</sup> , Box | 4032248693368 | 72 pc(s). | IEC: 400 V / 24 A / 0.2 - 2.5 mm <sup>2</sup><br>UL: 300 V / 18.5 A / AWG 26 - AWG<br>12 | Box       |
| BLF<br>5.08HC/05/90<br>SN BK BX | <a href="#">1000060001</a> | PCB plug-in connector,<br>female plug, 5.08 mm,<br>No. of poles: 5, 90°, PUSH<br>IN spring connection,<br>Clamping range, rated<br>connection, max.: 3.31<br>mm <sup>2</sup> , Box | 4032248689996 | 72 pc(s). | IEC: 400 V / 24 A / 0.2 - 2.5 mm <sup>2</sup><br>UL: 300 V / 18.5 A / AWG 26 - AWG<br>12 | Box       |

**BLC 5.08R**


Female plugs with crimp wire connection system. The female plugs provide space for labelling and can be coded.

- 0.25 - 2.5 mm<sup>2</sup> (IEC) / 26 - 14 AWG (UL)
- 400 V (IEC) / 300 V (UL)
- 21 A (IEC) / 10 A (UL)

**General ordering data**

| Type                         | Order No.                  | Version   | GTIN (EAN)    | Qty.      | Product data  | Packaging |
|------------------------------|----------------------------|---|---------------|-----------|---|-----------|
| BLC<br>5.08/05/180R<br>BK BX | <a href="#">1711990000</a> | PCB plug-in connector,<br>female plug, 5.08 mm, No.<br>of poles: 5, 180°, Crimp<br>connection, Clamping | 4008190935009 | 50 pc(s). | IEC: 400 V / 21 A<br>UL: 300 V / 10 A / AWG 26 - AWG 14 | Box       |

Creation date December 9, 2013 1:38:31 AM CET

**Data sheet**

**OMNIMATE Signal - series BL/SL 5.08  
SLDF 5.08 L/F 5 SN OR BX**

**Weidmüller Interface GmbH & Co. KG**  
 Klingenbergstraße 16  
 D-32758 Detmold  
 Germany  
 Fon: +49 5231 14-0  
 Fax: +49 5231 14-292083  
 www.weidmueller.com

**Mating connector (fully pluggable)**

|              |                            |   |                         |                                    |
|--------------|----------------------------|---|-------------------------|------------------------------------|
|              |                            | range, rated connection,<br>max.: 2.5 mm <sup>2</sup> , Box   |                         |                                    |
| BLC          | <a href="#">1610520000</a> | PCB plug-in connector,  | 4008190017736 50 pc(s). | IEC: 400 V / 21 A                  |
| 5.08/05/180R |                            | female plug, 5.08 mm, No.   |                         | UL: 300 V / 10 A / AWG 26 - AWG 14 |
| OR BX        |                            | of poles: 5, 180°, Crimp<br>connection, Clamping<br>range, rated connection,<br>max.: 2.5 mm <sup>2</sup> , Box |                         |                                    |

