

MOD JK ASSY 8 POSN SHLD 10MM W/PANEL TABS

1. PURPOSE 目的

Define the packaging specification and packaging method of MOD JK ASSY 8 POSN SHLD 10MM W/PANEL TABS.

订定 MOD JK ASSY 8 POSN SHLD 10MM W/PANEL TABS 产品之包装规格及包装方式。

2. APPLICABLE PRODUCT 适用范围

Product Part No.	Description
1116585-1	MOD JK ASSY 8 POSN SHLD 10MM W/PANEL TABS
1658869-X	MJ,8P/8C,10MM,WAVE PANEL TABS
1888542-2/3	MOD JACK ASSEMBLY, 8 POSN, SHELDED, 10mm, WITH PANEL TABS

3. PACKAGING MATERIAL 包装材料

Package	Part No.	Description	Size(LxWxH)	Usage
INNER	1533061-1	TY FOR 10MM M.J	295X182X18.4	6/240
MIDDLE	9-912064-2	INNER BOX TYPE-2	302X195X103	1/240
	9-912064-3	URETHANE CUSHION	280X170X5	3/240
	623865-4	INNER LABEL	102X51	1/240
OUTER	2-912011-9	CARTON C-5-3/4	397X313X220	1/960
	912065-2	AIR CAP #37 C-5	1100X390X4	1/960
	623865-1	OUTER LABEL	102X102	1/960

	Inner	Middle	Outer
LABEL	-	623865-4	623865-1
SEALING	-	Tape	Tape

4. PACKAGING QUANTITY 包装数量

	Inner	Middle	Outer
QTY	48 pcs/tray	240 pcs/inner box	960 pcs/carton

DR
Sam Wu

CHK
Kevin Zhou

APVD
Ansin Yang

5. PACKING METHOD 包装方法

5.1. Load connectors qty as 4 all oriented same way into tray.

按4中的数量将产品朝同一方向放入TRAY中。

5.2. Place another tray onto previous tray with products. position each individual tray in reverse direction(at 180 degree to the tray below).

盖上另一个装满产品的 TRAY, TRAY 与 TRAY 之间的放置方向相反(即旋转180度)。

两个TRAY重叠后图示如下:

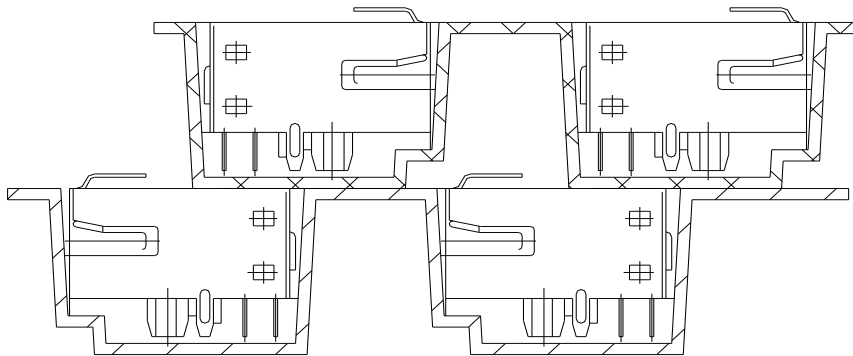


Figure 1

5.3. Stack 5 trays with connectors one by one, then put an empty tray on the top.

将装满产品的五个 TRAY 堆成一叠, 最后在上面放一个空 TRAY。

5.4. Set up an inner box.

折叠好一个内盒。

5.5. Place a cushion on bottom of inner box, and ensure under edge of tray don't pin cushion.

在内盒的底部放一块海绵, 保证 TRAY 的下部边缘不压住海绵。

5.6. Place trays full of connectors qty as 4 into the inner box and place 2 cushion on top of tray.

按 4 中的数量将一叠TRAY放入内盒中并在TRAY的上面放二块海绵。

5.7. Close cover of the inner box, place tape on the middle of three sides.

合上盖子, 并在内箱三边的中间(除连接边外)各贴上一条大胶带。

5. PACKING METHOD 包装方法

5.8. Place an inner label on the middle of cover of box.

在箱盖的中间贴上内标签。

注：其中对于1888542-2/3，还需在内盒盖上的内标签右边位置上加贴一客户标签 (PN:623868-1,格式如下图1示)。

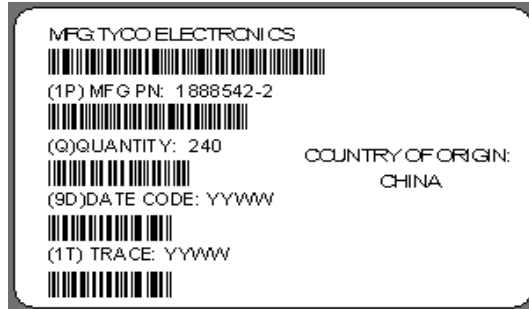


图 1 (only for 1888542-2/3)

---其中(9D)Date code及(1T)trace都是指日期，格式是YYWW.

5.9. Set up a carton and secure bottom flaps with tape.

折叠好一个外箱，并用胶带封好箱底。

5.10. Spread a piece of air cap and put into the box, air cap facing down.

展开一块气泡垫并将其放入箱中，气泡面朝下。

5.11. Put 4 inner boxes full of products into the carton and muffle 4 inner boxes with air cap.

将4个装满产品的内盒放入外箱中，并用气泡将四个内盒裹住。

5.12. Seal the box with tape. And place product identification label in "product id" marked on box.

用胶带封箱，在箱外印有“PRODUCT ID”标识处贴上外标签。