
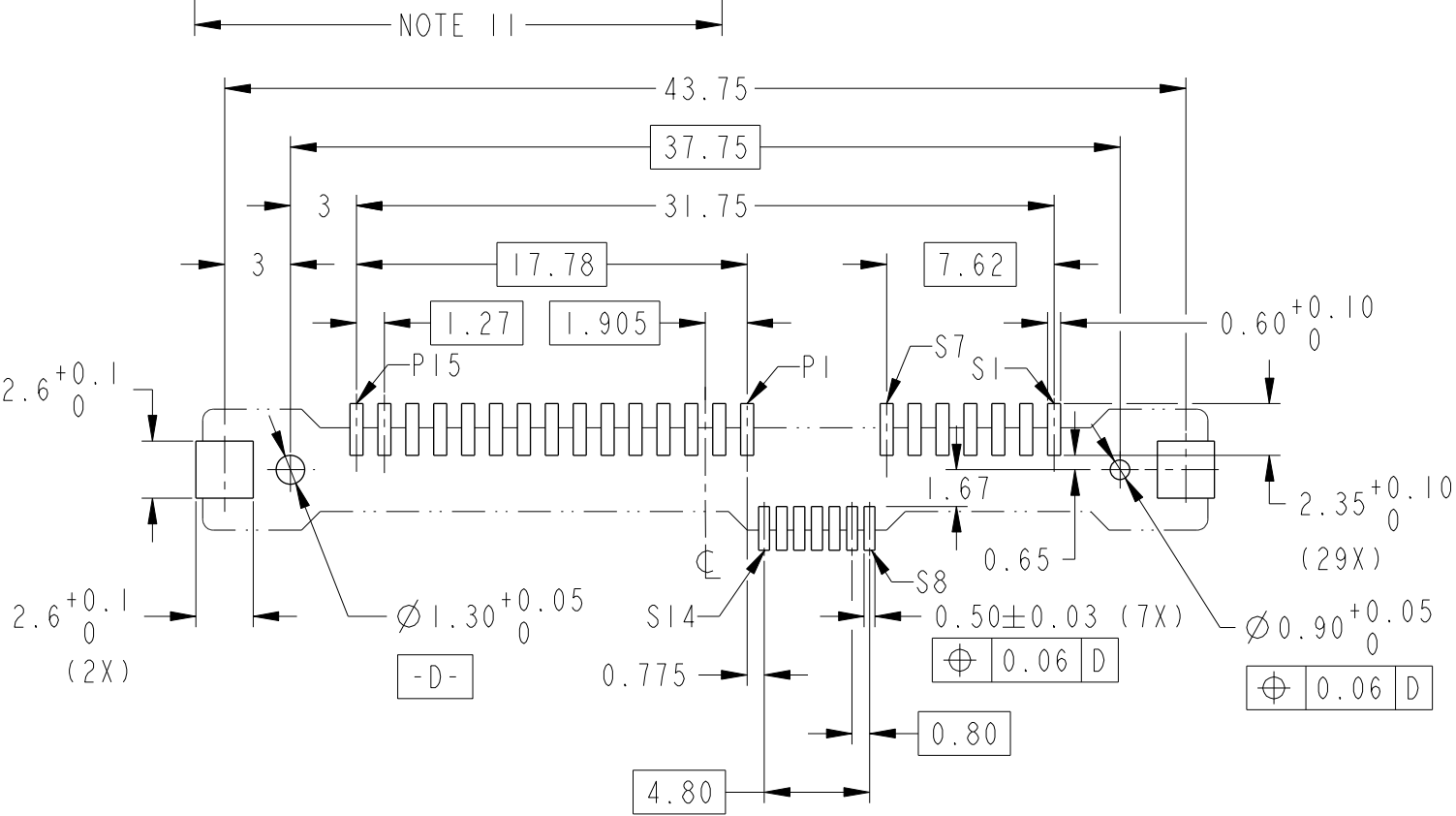


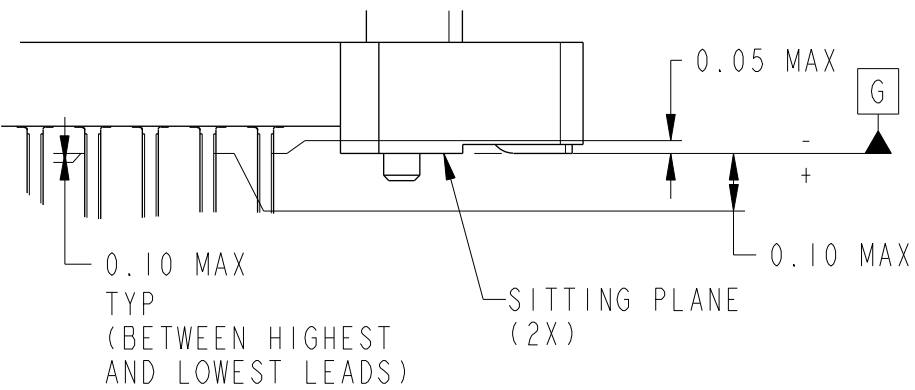
| 1 | | 2 | | | 3 | | 4 |
|--------------------|------------|---------|-------------|-------------|--------------|--------------------|--------|
| PRODUCT NO | METAL CLIP | PLATING | PICK-UP CAP | PACKAGING | REMARKS | PRODUCT NO | PLATNG |
| 10031567-001LF | 2 PCS | NOTE 2 | NO | TRAY | NOTE ⑧ | 10031567-401LF | NOTE ⑪ |
| 10031567-001CLF | | | YES | | NOTE ④ & ⑧ | 10031567-401CLF | |
| 10031567-001C-TRLF | | | YES | TAPE & REEL | NOTE ④ ⑥ & ⑧ | 10031567-401C-TRLF | |

NOTES:

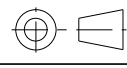
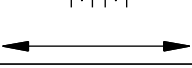
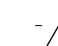
1. MATERIAL :
1) HOUSING : HIGH TEMP THERMOPLASTIC, UL 94V-0
COLOR : BLACK
2) TERMINAL : COPPER ALLOY
3) HOLD DOWN : COPPER ALLOY
- ② FINISH :
1) TERMINAL : 30μ" Au PLATING (CONTACT POINT) OVER 50μ" NICKEL
2) SOLDER TAIL : 100μ" MIN Sn OVER 50μ" NICKEL
3) HOLD DOWN : 100μ" MIN Sn OVER 50μ" NICKEL
3. PER SFF REV 1.1, EXCEPT 0.8mm PITCH BUMP AREA.
- ④ PART WITH PICK-UP CAP, P/N XXXXXXXX-XXXC LF.
- ⑤ THE STD PACKAGING IS IN TRAY UNLESS OTHERWISE SPECIFIED.
- ⑥ PART NUMBER WITH SUFFIX "-TR" MEANS FOR TAPE & REEL PACKAGING (E.G. P/N: XXXXXXXX-XXXC-TRLF).
7. THE HOUSING WILL WITHSTAND EXPOSURE TO 260°C PEAK TEMPERATURE FOR 10 SECONDS IN A CONVECTION, INFRA-RED OR VAPOR PHASE REFLOW OVEN.
- ⑧ THIS PRODUCT MEETS EUROPEAN UNION DIRECTIVES AND OTHER COUNTRY REGULATIONS AS DESCRIBED IN GS-22-008.
- ⑨ PART NUMBERS ENDING IN "LF" MEANS FOR NOTE 8 LEAD FREE IDENTIFICATION
~~(i) XXXXXXXX-XXXLF IS EQUIVALENT TO PREVIOUS P/N XXXXXXXX-XXX~~
~~(ii) XXXXXXXX-XXXCLF IS EQUIVALENT TO P/N XXXXXXXX-XXXC~~
~~(iii) XXXXXXXX-XXXC-TRLF IS EQUIVALENT TO P/N XXXXXXXX-XXXC-TR~~
- ⑩ A  SYMBOL WILL BE NEXT TO ANY DIMENSION, VIEW, OR NOTE WHICH HAS BEEN MODIFIED WITH THE CURRENT DRAWING REVISION.
- ⑪ FINISH :
1) TERMINAL : 15μ" GXT PLATING (CONTACT POINT) OVER 50μ" NICKEL
2) SOLDER TAIL : 100μ" MIN Sn OVER 50μ" NICKEL
3) HOLD DOWN : 100μ" MIN Sn OVER 50μ" NICKEL



RECOMMENDED PCB LAYOUT



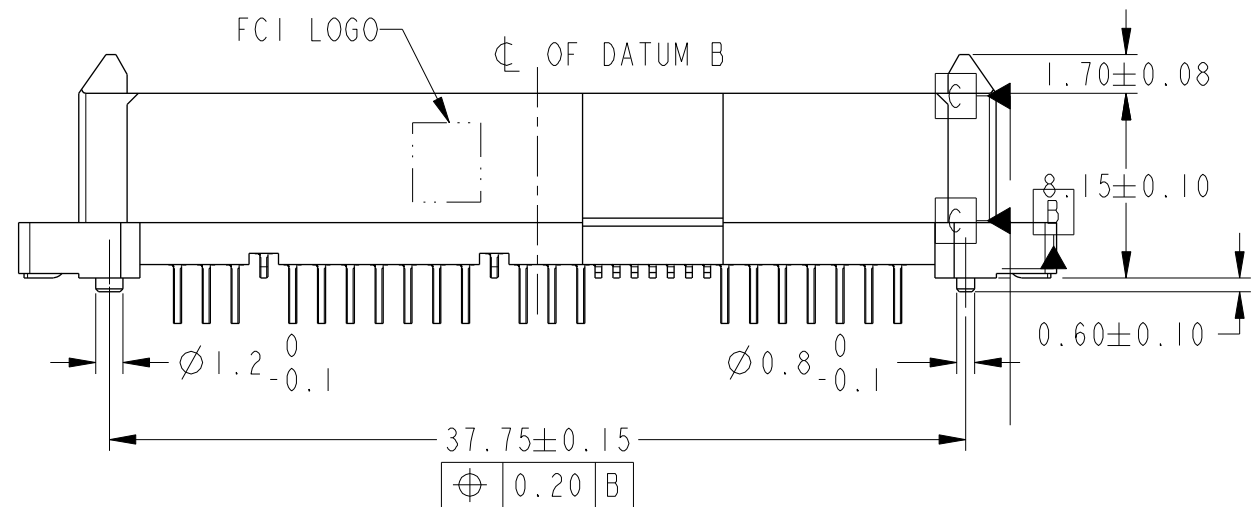
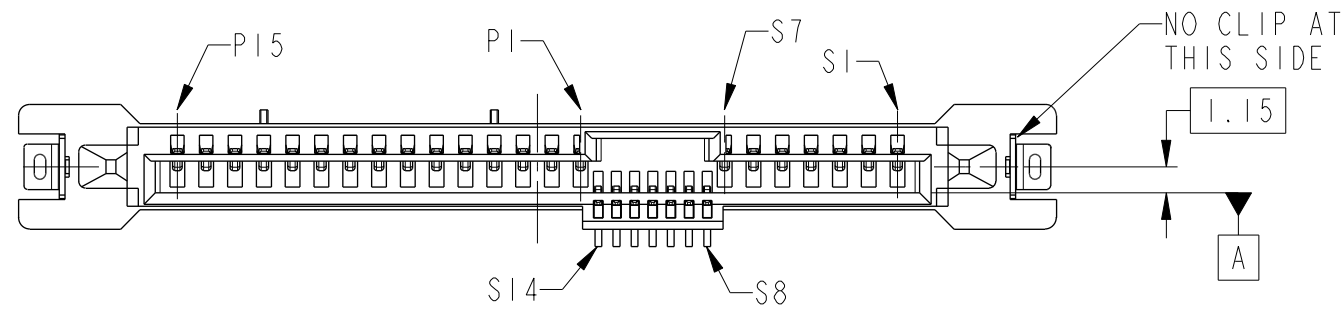
DETAIL 2
SCALE 6:1

| | | | | | | | | | | | |
|--|---------------------------------------|-------|-------|-----------------|------------|---|---|-----------|----------|---------------|--------------|
| spec ref - | | dr | | Louis Ng | 2011/10/03 | projection  | MM  | size | A3 | scale | 1:1 |
| tolerance std | TOLERANCES UNLESS OTHERWISE SPECIFIED | eng | | Noorhazelinda | 2016/10/20 | | | ecn no | | ELX-M-25167-1 | |
| ISO 406 ISO 1101 | | chr | | - | | | | rel level | | Released | |
| | | appr | | Koon-Poh Tay | 2016/12/12 | product family | | - | | | |
| surface  ISO 1302 | linear | 0.X | ± - | Amphenol FCi | title | SAS RECEPTACLE VERTICAL SMT TYPE ASSY | | dwg no | 10031567 | | rev N |
| | | 0.XX | ±0.20 | | | | | | | | |
| | | 0.XXX | ± - | | | | | | | | |
| | angular | 0° | ±2° | | | | | | | | |
| | | | | cat. no. | - | Product - Customer Drw | | | | sheet 2 of 3 | |

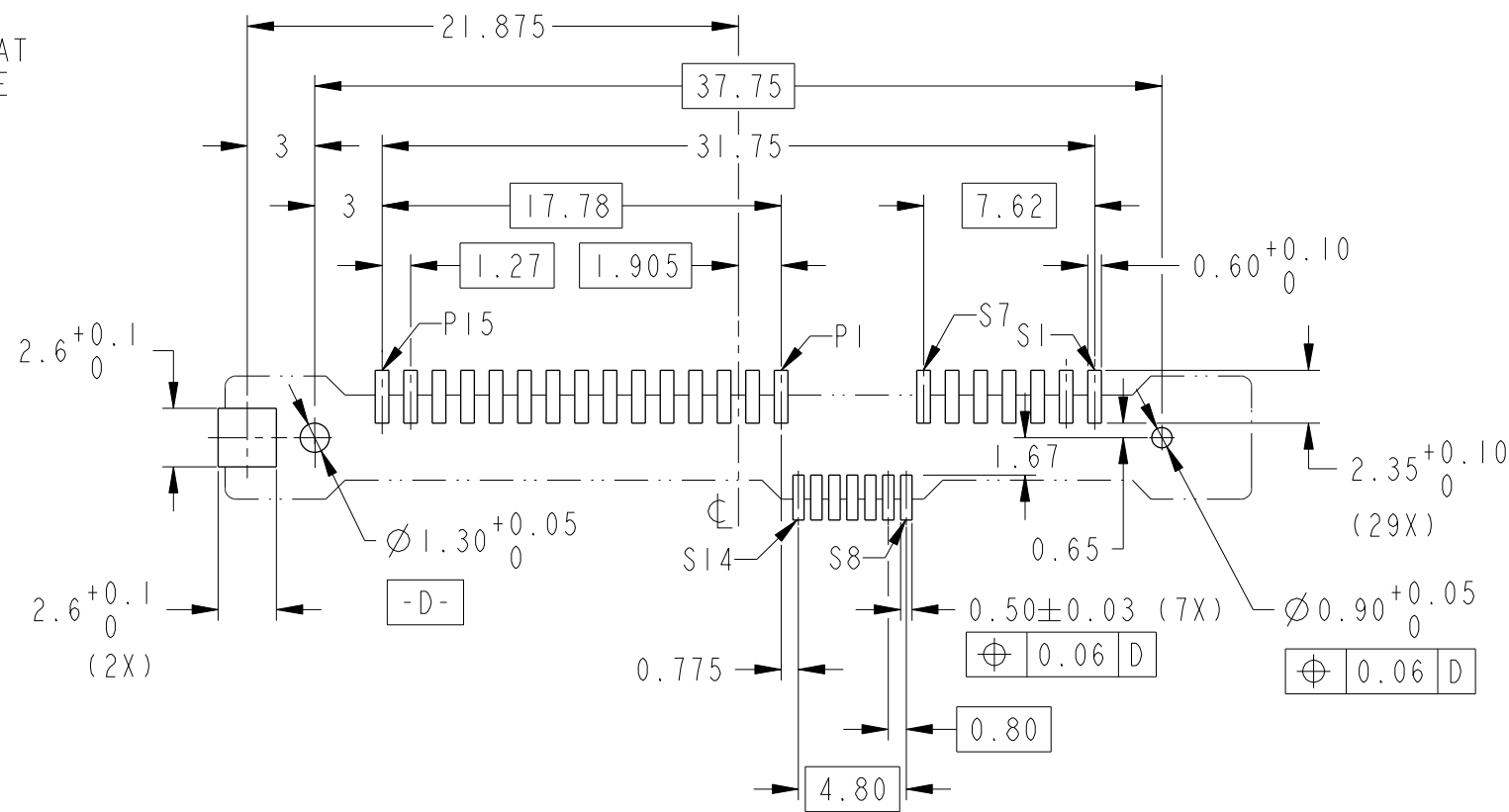
| 1 | | 2 | | | | 3 | | 4 |
|--------------------|------------|---------|-------------|-------------|--------------|--------------------|--------|---|
| PRODUCT NO | METAL CLIP | PLATING | PICK-UP CAP | PACKAGING | REMARKS | PRODUCT NO | PLATNG | |
| 10031567-002LF | 1 PC | NOTE 2 | NO | TRAY | NOTE ⑧ | 10031567-402LF | NOTE ⑪ | |
| 10031567-002CLF | | | YES | | NOTE ④ & ⑧ | 10031567-402CLF | | |
| 10031567-002C-TRLF | | | YES | TAPE & REEL | NOTE ④ ⑥ & ⑧ | 10031567-402C-TRLF | | |

NOTE 11

| PRODUCT NO | METAL CLIP | PLATING | PICK-UP CAP | PACKAGING | REMARKS |
|--------------------|------------|---------|-------------|----------------------------|--------------|
| 10031567-404C-TRLF | 1 PC | NOTE 11 | YES | CUSTOM-MADE TAPE & REEL | NOTE ④ ⑥ & ⑧ |



ALL OTHER DIMENSIONS, REFER TO SHEET 1.



RECOMMENDED PCB LAYOUT

| | | | | | | | | | | | | | | | | | | | | | | | | | | | | | | | | | | | | | |
|---------------------|--|---------------------------------------|--|-------|--|---------------|--|-----------------|--|----------------|--|--|--|------------------------|--|---------------|--|-------|--|-----|--|--------|--|--------------|--|--|--|--|--|--|--|--|--|-----|--|---|--|
| spec ref | | - | | dr | | Louis Ng | | 2011/10/03 | | projection | | MM | | size | | A3 | | scale | | 1:1 | | | | | | | | | | | | | | | | | |
| tolerance std | | TOLERANCES UNLESS OTHERWISE SPECIFIED | | eng | | Noorhazelinda | | 2016/10/20 | | | | | | ecn no | | ELX-M-25167-1 | | | | | | | | | | | | | | | | | | | | | |
| ISO 406 ISO 1101 | | | | chr | | - | | - | | | | | | rel level | | Released | | | | | | | | | | | | | | | | | | | | | |
| | | | | appr | | Koon-Poh Tay | | 2016/12/12 | | product family | | | | | | | | | | | | - | | | | | | | | | | | | | | | |
| surface ISO 1302 | | linear | | 0.X | | ± - | | Amphenol FCi | | title | | SAS RECEPTACLE VERTICAL SMT TYPE ASSY | | | | | | | | | | dwg no | | 10031567 | | | | | | | | | | rev | | N | |
| | | | | 0.XX | | ±0.20 | | | | | | | | | | | | | | | | | | | | | | | | | | | | | | | |
| | | | | 0.XXX | | ± - | | | | | | | | | | | | | | | | | | | | | | | | | | | | | | | |
| | | angular | | 0° | | ±2° | | | | cat. no. | | - | | Product - Customer Drw | | | | | | | | | | sheet 3 of 3 | | | | | | | | | | | | | |