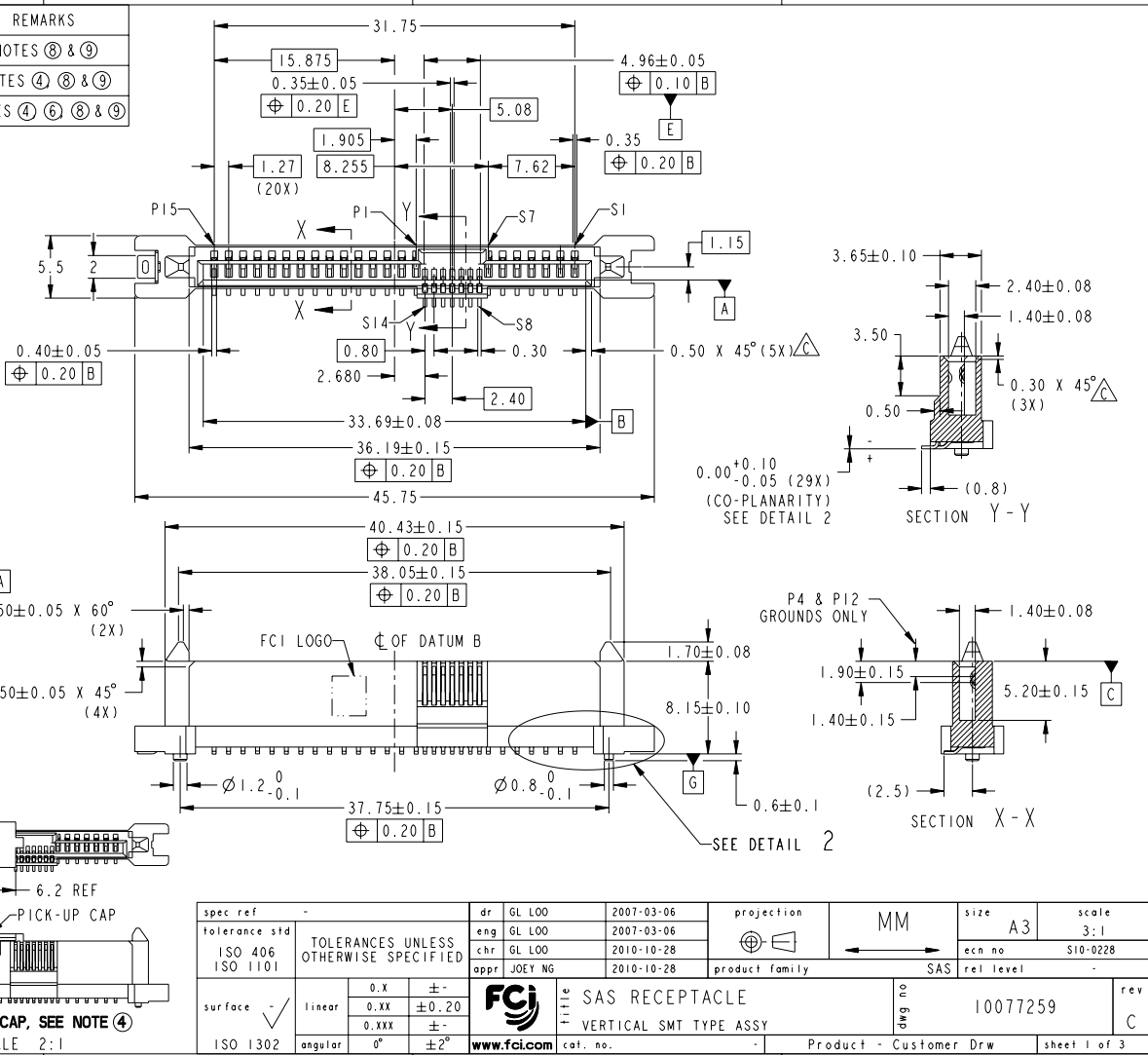


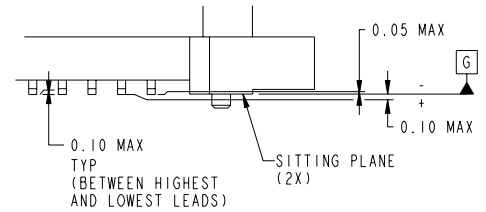
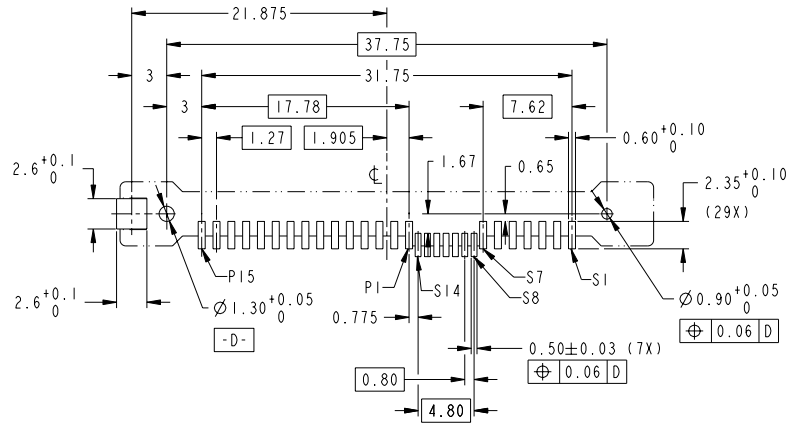
PRODUCT NO	METAL CLIP	REMARKS
10077259-001LF	I PC	NOTES ⑧ & ⑨
10077259-001CLF		NOTES ④ ⑧ & ⑨
10077259-001C-TRLF		NOTES ④ ⑥ ⑧ & ⑨



Copyright FCI.

PRODUCT NO  
SEE TABLE

RECOMMENDED PCB LAYOUT



DETAIL 2  
SCALE 6:1

NOTES:

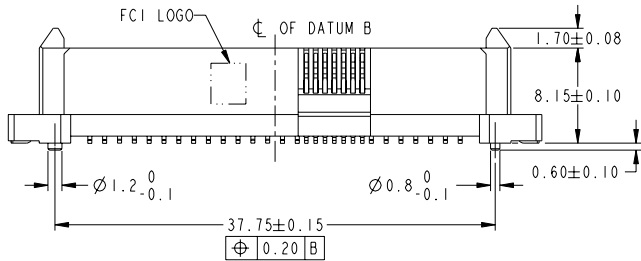
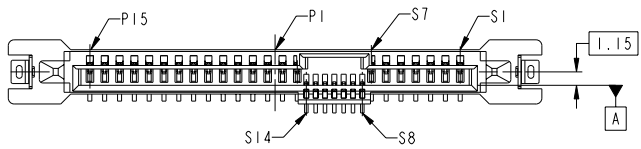
1. MATERIAL :
  - 1) HOUSING : HIGH TEMP THERMOPLASTIC, UL 94V-0, BLACK COLOR
  - 2) TERMINAL : COPPER ALLOY
  - 3) HOLD DOWN : COPPER ALLOY
2. FINISH :
  - 1) TERMINAL : 30μ" Au PLATING (CONTACT POINT) OVER 50μ" NICKEL
  - 2) SOLDER TAIL : 100μ" MIN Sn OVER 50μ" NICKEL
  - 3) HOLD DOWN : 100μ" MIN Sn OVER 50μ" NICKEL
- ③ PER SFF REV 1.1
- ④ PART WITH PICK-UP CAP, P/N XXXXXXXX-XXX LF.
- ⑤ THE STD PACKAGING IS IN TRAY
- ⑥ FOR TAPE & REEL PACKAGING, SUFFIX "-TR" ADDED, P/N XXXXXXXX-XXX-TR LF
7. THE HOUSING WILL WITHSTAND EXPOSURE TO 260°C PEAK TEMPERATURE FOR 10 SECONDS IN A CONVECTION, INFRA-RED OR VAPOR PHASE REFLOW OVEN.
- ⑧ THIS PRODUCT MEETS EUROPEAN UNION DIRECTIVES AND OTHER COUNTRY REGULATIONS AS DESCRIBED IN GS-22-008.
- ⑨ PART NUMBERS ENDING IN "LF" MEANS FOR NOTE 8 LEAD . FREE IDENTIFICATION.
10. A  $\Delta$  SYMBOL WILL BE NEXT TO ANY DIMENSION, VIEW, OR NOTE WHICH HAS BEEN MODIFIED WITH THE CURRENT DRAWING REVISION.

Copyright FCI

spec ref	-	dr	GL LOO	2007-03-06	projection	MM	size	A3	scale	3:1											
tolerance std	ISO 406 ISO 1101	eng	GL LOO	2007-03-06			ecn no	S10-0228	rel level	-											
TOLERANCES UNLESS OTHERWISE SPECIFIED		chr	GL LOO	2010-10-28							product family	SAS									
surface	<table border="1"> <tr> <td>linear</td> <td>0.X</td> <td>±</td> <td>-</td> </tr> <tr> <td></td> <td>0.XX</td> <td>±</td> <td>0.20</td> </tr> <tr> <td></td> <td>0.XXX</td> <td>±</td> <td>-</td> </tr> <tr> <td>angular</td> <td>0°</td> <td>±</td> <td>2°</td> </tr> </table>	linear	0.X	±	-		0.XX	±	0.20		0.XXX	±	-	angular	0°	±	2°		<b>TITLE</b> SAS RECEPTACLE VERTICAL SMT TYPE ASSY	<b>DWG NO</b> 10077259	<b>REV</b> C
linear	0.X	±	-																		
	0.XX	±	0.20																		
	0.XXX	±	-																		
angular	0°	±	2°																		
ISO 1302		www.fci.com	cat. no.	-	Product - Customer Drw	sheet 2 of 3															

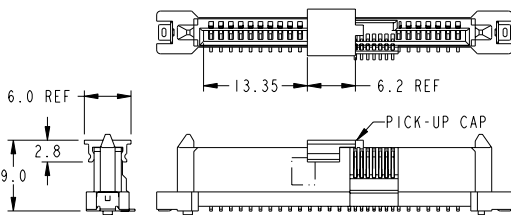
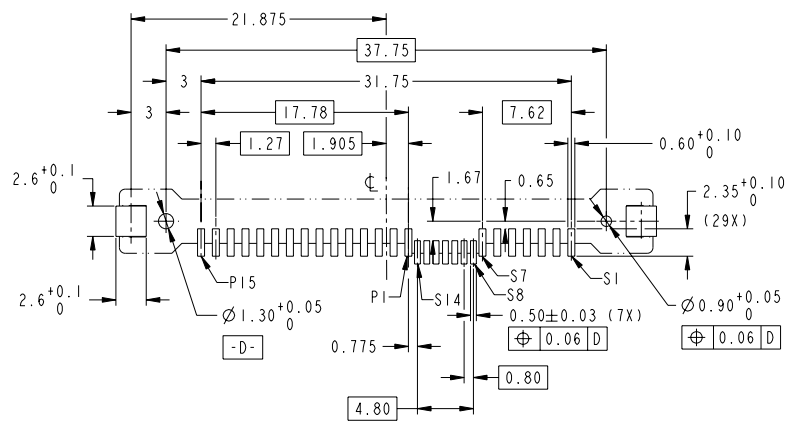
Prod File - REV C - 2010-10-28

PRODUCT NO	METAL CLIP	REMARKS
10077259-002LF	2 PCS	NOTES ⑧ & ⑨
10077259-002CLF		NOTES ④, ⑧ & ⑨
10077259-002C-TRLF		NOTE ④, ⑥, ⑧ & ⑨



NOTES:  
ALL OTHER DIMENSIONS, REFER TO SHEET 1.

**RECOMMENDED PCB LAYOUT**



**PART WITH PICK-UP CAP, SEE NOTE ④**  
SCALE 2:1

spec ref	-	dr	GL LOO	2007-03-06	projection	MM	size	A3	scale	3:1																
tolerance std	ISO 406 ISO 1101	eng	GL LOO	2007-03-06			ecn no	S10-0228	rel level		-															
TOLERANCES UNLESS OTHERWISE SPECIFIED		chr	GL LOO	2010-10-28			product family	SAS																		
surface	<table border="1"> <tr> <td>linear</td> <td>0.X</td> <td>±</td> <td>-</td> </tr> <tr> <td></td> <td>0.XX</td> <td>±</td> <td>0.20</td> </tr> <tr> <td></td> <td>0.XXX</td> <td>±</td> <td>-</td> </tr> <tr> <td>angular</td> <td>0°</td> <td>±</td> <td>2°</td> </tr> </table>	linear	0.X	±	-		0.XX	±	0.20		0.XXX	±	-	angular	0°	±	2°	appr	JOEY NG	2010-10-28	product family	SAS	rel level	-		
linear	0.X	±	-																							
	0.XX	±	0.20																							
	0.XXX	±	-																							
angular	0°	±	2°																							
					<b>TITLE</b> SAS RECEPTACLE VERTICAL SMT TYPE ASSY		dwg no	10077259	rev		C															
		<a href="http://www.fci.com">www.fci.com</a>			cat. no. -		Product - Customer Drw		sheet 3 of 3																	

Prod File - REV C - 2010-10-09

PDS: Rev :C

STATUS:Released

Printed: Nov 01, 2011