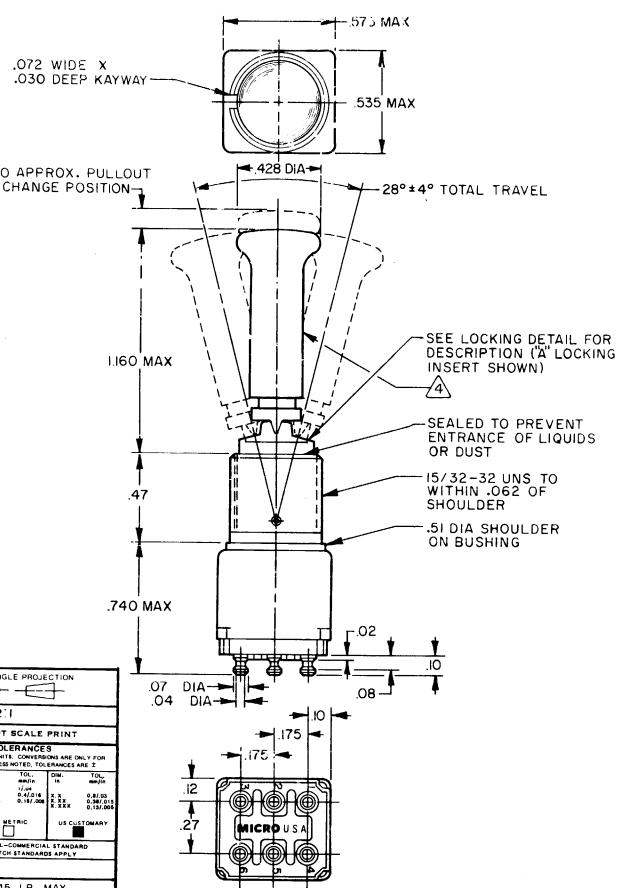


12TW1 SERIES CHART 2
 DRAWING NUMBER
 ISSUE 15
 CHECK
 REVISIONS
 A 20 8/25/82
 B 20 6/21/84
 C 20 6/29/89
 D 20 6/29/89
 E 20 6/29/89
 F 20 6/29/89
 G 20 6/29/89
 H 20 6/29/89
 I 20 6/29/89
 J 20 6/29/89
 K 20 6/29/89
 L 20 6/29/89
 M 20 6/29/89
 N 20 6/29/89
 O 20 6/29/89
 P 20 6/29/89
 Q 20 6/29/89
 R 20 6/29/89
 S 20 6/29/89
 T 20 6/29/89
 U 20 6/29/89
 V 20 6/29/89
 W 20 6/29/89
 X 20 6/29/89
 Y 20 6/29/89
 Z 20 6/29/89
 DRAWN
 M.A.M.
 7 APR 87
 CHECK
 J.A.P.
 25 FEB 88
 WEIGHT .045 LB MAX

MICRO SWITCH
 FREEPORT ILLINOIS U.S.A.
 A DIVISION OF HONEYWELL
 FED. MFG. CODE 9128

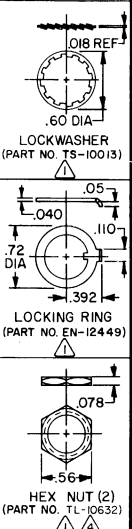
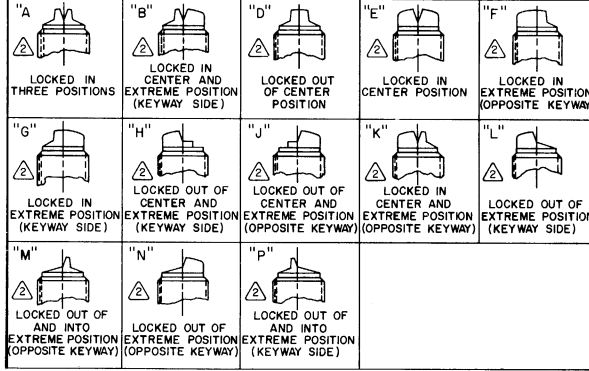
SWITCH-TOGGLE
 12TW1 SERIES
 CHART 2

THIS DRAWING COVERS A PROPRIETARY ITEM. THE PROPER USE OF MICRO SWITCH, A DIVISION OF HONEYWELL, THIS DRAWING IS NOT TO BE LOANED OR USED WITHOUT THE APPROVAL OF MICRO SWITCH.



MS NUMBER	CATALOG LISTING	AVAILABLE LOCKING COMBINATIONS FOR CONFIGURATION SEE LETTERED DETAILS	CIRCUIT MADE WITH TOGGLE LEVER IN		
			KEYWAY SIDE (1-2, 4-5)	CENTER (1-2, 4-5)	OPPOSITE KEYWAY (2-3, 5-6)
MS27721-21-1	12TW1-1	A,B,D,E,F,G,H,K,L,M,N,P	ON	OFF	ON
MS27721-22-1	12TW1-2	D, F, G	OFF	NONE	ON
MS27721-23-1	12TW1-3	D, F, G	ON	NONE	ON
	-21	E, F, K, M	NONE	OFF	ON
	-31	E, F, K, M	NONE	ON	ON
	-4	F	MOM OFF	NONE	ON
MS27721-31-1	12TW1-5	E, F, K, L, M, N	MOM ON	OFF	ON
	-6	F	MOM ON	NONE	OFF
MS27721-27-1	12TW1-7	E, L, N	MOM ON	OFF	MOM ON
MS27721-26-1	12TW1-8	F	MOM ON	NONE	ON
	-51	E	NONE	ON	MOM ON
	-61	E	MOM ON	OFF	NONE

ELECTRICAL DATA
 L117
 5A 125 VAC



NOTES
 △ FURNISHED UNASSEMBLED
 △ SUFFIX MUST BE ADDED FOR DESIRED TYPE TOGGLE LOCKING
 3 - TERMINALS ARE PLATED FOR SOLDERING
 △ MATTE FINISH

THIRD ANGLE PROJECTION
 SCALE 2:1
 DO NOT SCALE PRINT
 TOLERANCES
 APPLY TO DESIGN UNITS. CONVERSIONS ARE ONLY FOR REFERENCE. UNLESS NOTED, TOLERANCES ARE:
 DIM. FRACTIONS DECIMALS
 .001 .0005 .001 .001
 .005 .0025 .005 .005
 .01 .005 .01 .01
 .03 .015 .03 .03
 .05 .025 .05 .05
 .1 .05 .1 .1
 .15 .075 .15 .15
 .2 .1 .2 .2
 .3 .15 .3 .3
 .4 .2 .4 .4
 .5 .25 .5 .5
 .6 .3 .6 .6
 .7 .35 .7 .7
 .8 .4 .8 .8
 .9 .45 .9 .9
 1 .5 1 1
 1.5 .75 1.5 1.5
 2 .001 .001 .001 .001
 2.5 .001 .001 .001 .001
 3 .001 .001 .001 .001
 4 .001 .001 .001 .001
 5 .001 .001 .001 .001
 6 .001 .001 .001 .001
 7 .001 .001 .001 .001
 8 .001 .001 .001 .001
 9 .001 .001 .001 .001
 10 .001 .001 .001 .001
 DESIGN UNITS METRIC US CUSTOMARY
 RAW MATERIAL-COMMERCIAL STANDARD
 MICRO SWITCH STANDARDS APPLY