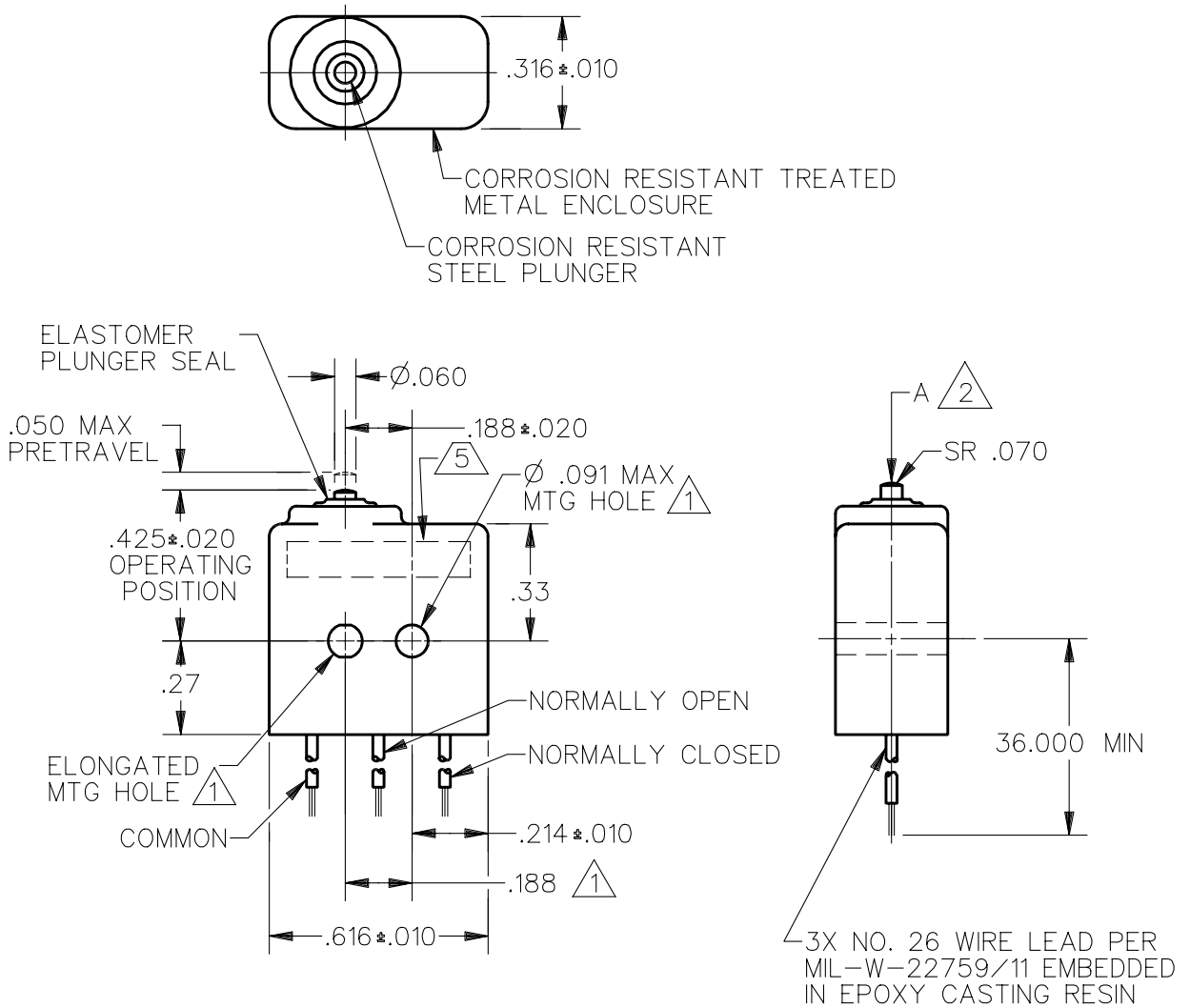


CATALOG LISTING
1XE314
PAGE 1 OF 1
RELEASE NO. PR-21966
REPLACES
ISSUE
3

REVISIONS
A PR-1
21966
JJA
20 DEC 95

DDM/CAD
DRAWN
JJA 20 DEC 95
CHECK

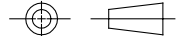


NOTES

- ① MOUNTING HOLES WILL ACCEPT Ø.087 MAX PINS OR SCREWS ON .188±.002 CENTERS
- ② ACTUATION IN LINE WITH ARROW "A" IS RECOMMENDED
- ③ WEIGHT OF SWITCH ONLY IS .16 OZ MAX. WEIGHT OF SWITCH WITH WIRE LEADS IS .55 OZ MAX
- 4 CONTACT MATERIAL: 24K SOLID GOLD
- ⑤ YELLOW MARKING IS ON BOTH SIDES OF HOUSING TO IDENTIFY THAT THIS UNIT HAS GOLD CONTACTS
- 6 SWITCH CONFORMS TO MS-27994-5 EXCEPT FOR WIRE LEADS

THIS DRAWING COVERS A PROPRIETARY ITEM AND IS THE PROPERTY OF MICRO SWITCH, A DIVISION OF HONEYWELL. THIS DRAWING IS NOT TO BE COPIED OR USED WITHOUT THE APPROVAL OF MICRO SWITCH.

THIRD ANGLE PROJECTION



CHARACTERISTICS	ELECTRICAL DATA	SCALE 2:1	DO NOT SCALE PRINT
OPERATING FORCE — — — — 5-17 OZ	CONTACT ARRANGEMENT S P D T	UNLESS OTHERWISE SPECIFIED TOLERANCES ARE ONE PLACE (.0) ±.030 TWO PLACE (.00) ±.015 THREE PLACE (.000) ±.005 ANGLES ± WEIGHT ③	
RELEASE FORCE — — — — 4 OZ MIN	28 VOLTS DC RATING		
RELEASE TRAVEL — — — — .004 MIN	INDUCTIVE — — — SEA LEVEL — — — 1/2 AMP		
DIFFERENTIAL TRAVEL — — — .005 MAX	50,000 FT — — — 1/2 AMP		
OVERTRAVEL — — — — .004 MIN	RESISTIVE — — — SEA LEVEL — — — 1 AMP		
	50,000 FT — — — 1 AMP		