



## Standard Products

We can manufacture and supply plastic studding from size M3 to M24 in up to 3 metre lengths.

A comprehensive range of injection moulded components and fasteners can be manufactured from the following materials:

**Nylon** Type 6.6 a Polyamide and one of the hardest and strongest engineering grades of plastic. Grades of filled Nylon are available including Molybdenum Disulphide, Glass and Carbon etc.

**Polypropylene** Most of the fasteners produced in nylon can also be manufactured from Polypropylene which is used for it's resistance to certain chemicals.

**PVDF (Polyvinylidene Fluoride)** Again most of the fasteners produced in Nylon can also be manufactured from PVDF, which is used for it's excellent chemical resistance.

**Polyacetal, Polyethylene, Polycarbonate,** and many more.

A range of colours are available in most materials (subject to a minimum order restriction).

**Computer Design** CAD design & CAM engineering for custom made plastic injection mouldings.

**Free Samples** and advice from our friendly and well trained staff.

**Distributors of Stock Shapes** We are also stockists of rod, bar and sheet in Nylon, Polypropylene, P.V.D.F. and Acetal.

**Machine Shop** For custom made parts to customers specified requirements.



## Nylon Screwed Rod (Studding)

### ISOMETRIC DIN 975

Standard lengths 1 metre long. Up to 3 metres long if required.	Thread Diameter	Pitch
	M3	0.5
	M4	0.7
Studding can be manufactured from other materials i.e. Polypropylene, P.V.D.F. and Polyacetal. Studs can be provided to required length and can be threaded each end.	M5	0.8
	M6	1.0
	M8	1.25
Other Thread Forms:	M10	1.5
	M12	1.75
Imperial - B.S.W. 1/4" 5/16" 3/8" 1/2" 5/8" 3/4" 1" (to order)	M14	2.0
- B.S.F. 1/4" 3/8" 1/2" 9/16" 5/8" 3/4" 1" (to order)	M16	2.0
- B.S.P. 1/4" 1/2" 3/4" to order	M18	2.5
American - U.N.C./U.N.F. from 1/4" up to 1" (to order)	M20	2.5
	M22	2.5
Technical data is available on request.	M24	3.0



## Nylon Nuts

### Hexagonal Full Nuts Din 555/934

Product Code	Thread Size	Pitch	Thickness	Across Flats
1110020	M2	0.4	1.2	3.9
1110025	M2.5	0.45	1.8	4.9
1110030	M3	0.5	2.4	5.5
1110035	M3.5	0.6	2.7	6.9
1110040	M4	0.7	3.2	7.0
1110050	M5	0.8	4.0	8.0
1110060	M6	1.0	5.5	10.0
1110080	M8	1.25	6.5	13.0
1110100	M10	1.50	8.0	17.0
1110120	M12	1.75	10.0	19.0
1110140	M14	2.0	11.0	22.0
1110160	M16	2.0	13.0	24.0
1110180	M18	2.5	15.0	27.0
1110200	M20	2.5	16.0	30.0
1110240	M24	3.0	19.0	36.0

### Half/Lock Hexagonal Nuts

Product Code	Thread Size	Pitch	Thickness	Across Flats
1110120HN	M12	1.75	7.0	19.0
1110160HN	M16	2.0	8.0	24.0

### Combined Nut/Washer

Product Code	Thread Size	Pitch	Thickness	Washer Diameter	Across Flats
1140030	M3	0.5	3.1	6.6	5.5
1140040	M4	0.7	3.4	8.8	7.0
1140050	M5	0.8	5.2	9.8	7.9
1140060	M6	1.0	6.0	13.0	10.0
1140080	M8	1.25	8.0	17.0	13.0
1140100	M10	1.50	9.5	22.0	17.0
1140120	M12	1.75	14.5	27.0	19.0
1140160	M16	2.0	19.5	39.0	24.0
1140200	M20	2.5	18.0	42.0	30.0

### Combined Nuts/Large Washer

Product Code	Thread Size	Pitch	Thickness	Washers Diameter	Across Flats
1140120L	M12	1.75	17.5	39.0	19.0

### Hexagonal Dome Nuts Din 1587

Product Code	Thread Size	Pitch	Height	Across Flats
1130030	M3	0.5	5.1	5.5
1130040	M4	0.7	8.0	7.0
1130050	M5	0.8	10.0	8.0
1130060	M6	1.0	12.0	10.0
1130080	M8	1.25	15.0	13.0
1130100	M10	1.50	17.5	16.0
1130120	M12	1.75	23.5	19.0
1130160	M16	2.0	27.5	24.0

1130200	M20	2.5	29.1	26.7
---------	-----	-----	------	------

Wing Nuts (Butterfly Type)					
Product Code	Thread Size	Pitch	Height	Width	Nut Diameter
1120040	M4	0.7	12.2	22.8	10.2
1120050	M5	0.8	12.2	22.8	10.2
1120060	M6	1.0	16.0	28.0	14.2
1120080	M8	1.25	18.3	35.1	16.5
1120100	M10	1.50	18.3	35.1	16.5
1120120	M12	1.7	22.7	44.7	21.1

Hexagonal Nut/Screw Covers	
M4 - M24	



Standard DIN 125				
Description	Out Diameter	Inside Diameter	Thickness	Product Code
M2	5.00	2.20	0.30	1160020
M2	5.00	2.15	0.80	1160020L
M2.5	6.00	2.70	0.50	1160025
M3	7.00	3.20	0.50	1160030
M3	8.00	3.20	0.80	1160030S
M3.5	8.00	3.70	0.50	1160035
M4	9.00	4.30	0.80	1160040
M5	10.00	5.30	1.00	1160050
M6	12.50	6.40	1.60	1160060
M7	14.00	7.40	1.60	1160070
M8	17.00	8.40	1.60	1160080
M10	21.00	10.50	2.00	1160100
M12	24.00	13.00	2.50	1160120
M14	30.00	15.00	3.00	1160140
M16	30.00	17.00	3.00	1160160
M18	34.00	19.00	3.00	1160180
M20	37.00	21.00	3.00	1160200
M22	39.00	23.00	3.00	1160220
M24	44.00	25.00	4.00	1160240
M27	50.00	28.00	4.00	1160270
M30	56.00	31.00	4.00	1160300
M33	60.00	34.00	5.00	1160330
M36	66.00	37.00	5.00	1160360

Large DIN 9021				
Description	Out Diameter	Inside Diameter	Thickness	Product Code
M2.5	5.60	2.65	0.80	1160025L
M3	9.00	3.20	0.80	1160030L
M4	12.00	4.30	1.00	1160040L
M5	15.00	5.30	1.50	1160050L
M6	19.00	6.40	1.50	1160060L
M8	25.00	8.40	2.00	1160080L
M10	30.00	10.50	2.50	1160100L
M12	40.00	13.00	3.00	1160120L
M16	50.00	17.00	3.00	1160160L

M20	60.00	22.00	4.00	1160200L
-----	-------	-------	------	----------

Form 'C' Nylon 6.6 Washers				
Description	Out Diameter	Inside Diameter	Thickness	Product Code
M6	14.00	6.40	1.60	1160060
M8	21.00	8.40	2.00	1160080
M10	24.00	10.50	2.00	1160100
M16	32.00	17.00	3.00	1160160
M20	39.00	21.00	3.00	1160200
M24	50.00	25.00	4.00	1160240
M27	56.00	28.00	4.00	1160270
M30	60.00	31.00	4.00	1160300
M33	66.00	34.00	5.00	1160330
M36	72.00	37.00	5.00	1160360



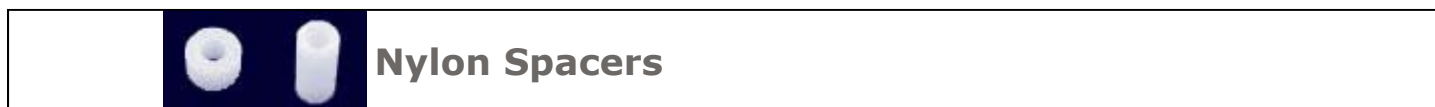
Special Nylon 6.6 Washers			
Inside Diameter	Outside Diameter	Thickness	Product Code
3.2	5.0	3.0	16705000320300
3.7	6.9	0.8	16706900370080
4.5	19.0	1.5	16719000450150
5.3	9.0	0.5	16709000530050
5.3	11.0	1.0	16711000530100
5.8	12.5	1.0	16712500580100
6.0	40.0	3.0	16740000600030
6.3	13.8	2.6	16713800630260
6.35	14.3	0.8	16714300635080
6.4	12.0	1.5	16712000640150
6.4	13.0	1.0	16713000640100
6.4	24.0	2.5	16724000640250
6.43	15.0	3.0	16715000643300
6.53	12.7	3.18	16712700653318
6.53	12.7	0.81	16712700653081
8.2	16.00	3.00	16716000820300
6.60	17.65	1.52	16717650660152
8.4	50.80	1.6	16750000800160
8.4	20.00	3.00	16720000840300
8.4	21.0	2.0	16721000840200
8.4	24.0	2.5	16724000840250
8.4	40.0	3.0	16740000840300
8.64	15.6	3.18	16715620864318
10.0	20.8	1.6	16720801000160
10.4	50.0	2.0	16750001040200
10.5	22.0	2.5	16722001050250
11.0	25.0	2.0	16725001100200
11.0	50.0	2.0	16750001100200
11.5	60.0	2.5	16760001150025
12.0	40.0	1.5	16740001200150
12.19	20.96	2.54	16720961219254
12.5	22.2	2.0	16722201250200
12.78	28.45	0.84	16728451278084
13.0	26.0	1.6	16726001300160

14.0	50.0	3.0	16750001400300
16.0	25.40	1.5	16725001600200
17.0	23.0	3.0	16723001700300
20.5	40.0	1.5	16740002050150
27.5	37.0	2.0	16737002750200
30.0	42.0	2.4	16742403000240

Nylon 6.6 Load Bearing Washers				
Size	Inside Diameter	Outside Diameter	Thickness	Product Code
M10	10.5	50.0	3.0	1660100
M12	13.0	50.0	3.0	1660120
M16	17.0	80.0	3.0	1660160

Nylon 6.6 Cup Washers	
Description	Product Code
M4 Small Cheesehead	019044200
M6 Medium Cheesehead	019070400
M10 Large Cheesehead	019103185
M5 Panhead	023054240
M6 Panhead	023063350

If the size you require is not listed please enquire, blanked washers are also available from a variety of Non-Metallic materials .i.e. P.V.C., P.T.E.E. Felt, Laminates, Fibre, Rubber, etc.



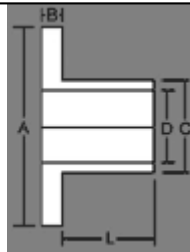
Nylon 6.6 Spacers			
Inside Diameter	Outside Diameter	Length	Product Code
2.50	5.00	8.00	168050002500800
2.50	5.00	14.00	168050002501400
6.30	16.00	4.85	168160006300480
6.30	16.00	6.50	168160006300650
6.40	25.00	6.00	168250006400600
6.53	12.70	25.40	168127006532540
7.50	18.00	10.00	168180007501000
7.50	18.00	15.00	168180007501500
8.20	14.00	5.50	168140008200550
8.40	25.00	6.00	168250008400600
8.50	14.00	15.00	168140008501500
9.60	16.00	12.70	168160009201270
10.00	22.00	5.00	168220010000500
10.00	50.00	5.00	168500010000500
10.50	25.00	6.00	168250010500600
12.50	50.00	5.00	168500012500500
13.00	17.00	22.00	168170013002200
13.00	30.00	4.00	168300013000400
15.00	32.00	9.50	168320015000950
15.50	30.00	4.00	168300015500400
16.00	50.00	5.00	168500016000500
18.50	22.00	19.0	168220018501900
25.00	50.00	5.00	168500025000500
26.00	44.00	4.00	168440026000400
72.00	100.0	5.00	168999972000500

Tapped spacers, Hexagon Tapped spacers, Shoulder washers and Bushes also available.

Many other sizes available on request.



## Nylon Insulators



Nylon 6.6 Machine Screw Insulators						
Product Code	Size	Length	A	B	C	D
164002003	M2	3.0	4.2	1.0	3.0	2.1
164002004	M2	4.0	4.2	1.0	3.0	2.1
164003002	M3	2.0	6.2	1.0	4.0	3.1
164003003	M3	3.0	6.2	1.0	4.0	3.1
164003004	M3	4.0	6.2	1.0	4.0	3.1
164003005	M3	5.0	6.2	1.0	4.0	3.1
164003006	M3	6.0	6.2	1.0	4.0	3.1
164003007	M3	7.0	6.2	1.0	4.0	3.1
164003008	M3	8.0	6.2	1.0	4.0	3.1
164003009	M3	9.0	6.2	1.0	4.0	3.1
164003010	M3	10.0	6.2	1.0	4.0	3.1
164004003	M4	3.0	8.2	1.5	6.0	4.1
164004004	M4	4.0	8.2	1.5	6.0	4.1
164004005	M4	5.0	8.2	1.5	6.0	4.1
164004007	M4	7.0	8.2	1.5	6.0	4.1
164004009	M4	9.0	8.2	1.5	6.0	4.1
164004012	M4	12.0	8.2	1.5	6.0	4.1
164005003	M5	3.0	10.2	2.0	7.0	5.1
164005004	M5	4.0	10.2	2.0	7.0	5.1
164005005	M5	5.0	10.5	2.0	7.0	5.1
164005007	M5	7.0	10.2	2.0	7.0	5.1
164005009	M5	9.0	10.2	2.0	7.0	5.1
164006004	M6	4.0	12.2	2.0	8.0	6.1
164006006	M6	6.0	12.2	2.0	8.0	6.1
164006008	M6	8.0	12.2	2.0	8.0	6.1
164006010	M6	10.0	12.2	2.0	8.0	6.1
164006012	M6	12.0	12.2	2.0	8.0	6.1
164008004	M8	4.0	14.2	2.5	10.0	8.1
164008006	M8	6.0	14.2	2.5	10.0	8.1
164008008	M8	8.0	14.2	2.5	10.0	8.1
164008010	M8	10.0	14.2	2.5	10.0	8.1
164008012	M8	12.0	14.2	2.5	10.0	8.1
164010006	M10	6.0	30.0	1.5	11.2	10.5
164010010	M10	10.0	30.0	1.5	11.2	10.5
164010012	M10	12.0	30.0	1.5	11.2	10.5
164010015	M10	15.0	30.0	1.5	11.2	10.5
164010023	M10	23.0	30.0	1.5	11.2	10.5
164012016	M12	16.0	30.0	2.0	16.0	13.0
164020017	M20	17.5	36.0	2.0	22.0	20.2

The above sizes are to tolerance plus/minus 0.13mm.

Nylon screw insulators are used to isolate Metal Screws. They are excellent electrical insulators, resist corrosion and can be used as light load bearings.



## Nylon Cheesehead Screws

Thread Size M2 0.4mm Pitch		Thread Size M2.5 0.45mm Pitch		Thread Size M3 0.5mm Pitch	
Product Code	Length	Product Code	Length	Product Code	Length
119020004	4mm	119025004	4mm	119030003	3mm
119020005	5mm	119025005	5mm	119030004	4mm
119020006	6mm	119025006	6mm	119030005	5mm
119020008	8mm	119025008	8mm	119030006	6mm
119020010	10mm	119025010	10mm	119030008	8mm
119020012	12mm	119025012	12mm	119030010	10mm
119020016	16mm	119025016	16mm	119030012	12mm
119020020	20mm	119025020	20mm	119030016	16mm
119020025	25mm	119025025	25mm	119030020	20mm
				119030025	25mm
				119030030	30mm
				119030035	35mm
				119030040	40mm
				119030045	45mm
Thread Size M3.5 0.6mm Pitch		Thread Size M4 0.7mm Pitch		Thread Size M5 0.8mm Pitch	
Product Code	Length	Product Code	Length	Product Code	Length
119035005	5mm	119040006	6mm	119050006	6mm
119035008	8mm	119040008	8mm	119050008	8mm
119035010	10mm	119040010	10mm	119050010	10mm
119035012	12mm	119040012	12mm	119050012	12mm
119035016	16mm	119040016	16mm	119050016	16mm
119035020	20mm	119040020	20mm	119050020	20mm
119035025	25mm	119040025	25mm	119050025	25mm
119035035	35mm	119040030	30mm	119050030	30mm
119035042	42mm	119040035	35mm	119050035	35mm
		119040040	40mm	119050040	40mm
		119040050	50mm	119050050	50mm
Thread Size M6 1.00mm Pitch		Thread Size M8 1.25mm Pitch		Thread Size M10 1.50mm Pitch	
Product Code	Length	Product Code	Length	Product Code	Length
119060005	5mm	119080010	10mm	119100016	16mm
119060008	8mm	119080016	16mm	119100020	20mm
119060010	10mm	119080020	20mm	119100025	25mm
119060012	12mm	119080025	25mm	119100030	30mm
119060016	16mm	119080030	30mm	119100035	35mm
119060020	20mm	119080035	35mm	119100040	40mm
119060025	25mm	119080040	40mm	119100050	50mm
119060030	30mm	119080050	50mm	119100060	60mm
119060035	35mm	119080060	60mm	119100070	70mm
119060040	40mm	119080070	70mm		
119060045	45mm	119080080	80mm		
				Thread Size M12 1.75mm Pitch	

119060050	50mm
119060060	60mm
119060070	70mm
119060080	80mm

Product Code	Length
119120015	15mm



## Nylon Hexagonal Head Screws

### Thread Size M2 0.4mm Pitch

Product Code	Length
120020004	4mm
120020005	5mm
120020006	6mm
120020008	8mm
120020010	10mm
120020012	12mm
120020016	16mm
120020020	20mm
120020025	25mm

### Thread Size M2.5 0.45mm Pitch

Product Code	Length
120025004	4mm
120025005	5mm
120025006	6mm
120025008	8mm
120025010	10mm
120025012	12mm
120025016	16mm
120025020	20mm
120025025	25mm

### Thread Size M3 0.5mm Pitch

Product Code	Length
120030004	4mm
120030005	5mm
120030006	6mm
120030008	8mm
120030010	10mm
120030012	12mm
120030016	16mm
120030020	20mm
120030025	25mm
120030030	30mm
120030035	35mm

### Thread Size M3.5 0.6mm Pitch

Product Code	Length
120035005	5mm
120035006	6mm
120035008	8mm
120035010	10mm
120035012	12mm
120035016	16mm
120035020	20mm
120035025	25mm
120035035	35mm

### Thread Size M4 0.7mm Pitch

Product Code	Length
120040006	6mm
120040008	8mm
120040010	10mm
120040012	12mm
120040016	16mm
120040020	20mm
120040025	25mm
120040030	30mm
120040035	35mm
120040040	40mm

### Thread Size M5 0.8mm Pitch

Product Code	Length
120050006	6mm
120050008	8mm
120050010	10mm
120050012	12mm
120050016	16mm
120050020	20mm
120050025	25mm
120050030	30mm
120050035	35mm
120050040	40mm
120050050	50mm

### Thread Size M6 1.00mm Pitch

Product Code	Length
120060005	5mm
120060008	8mm
120060010	10mm
120060012	12mm
120060016	16mm
120060020	20mm
120060025	25mm
120060030	30mm
120060035	35mm
120060040	40mm
120060045	45mm
120060050	50mm
120060060	60mm
120060070	70mm
120060075	75mm

### Thread Size M8 1.25mm Pitch

Product Code	Length
120080010	10mm
120080016	16mm
120080020	20mm
120080025	25mm
120080030	30mm
120080035	35mm
120080040	40mm
120080050	50mm
120080060	60mm
120080070	70mm
120080080	80mm

### Thread Size M10 1.50mm Pitch

Product Code	Length
120100016	16mm
120100020	20mm
120100025	25mm
120100030	30mm
120100035	35mm
120100040	40mm
120100050	50mm
120100060	60mm
120100065	65mm
120100070	70mm
120100080	80mm
120100100	100mm



120060080 80mm

## Thread Size M12 1.75mm Pitch

Product Code	Length
120120020	20mm
120120025	25mm
120120030	30mm
120120035	35mm
120120040	40mm
120120050	50mm
120120060	60mm
120120065	65mm
120120070	70mm
120120080	80mm
120120090	90mm
120120100	100mm
120120120	120mm
120120130	130mm
120120160	160mm

## Thread Size M16 2.00mm Pitch

Product Code	Length
120160020	20mm
120160025	25mm
120160040	40mm
120160055	55mm
120160060	60mm
120160070	70mm
120160080	80mm
120160090	90mm
120160100	100mm
120160120	120mm

## Thread Size M20 2.5mm Pitch

Product Code	Length
120200040	40mm
120200055	55mm
120200060	60mm
120200070	70mm
120200080	80mm
120200090	90mm
120200100	100mm

Hexagonal Washer Faced Bolt  
M20 x 250mm Long Threaded

Product Code	Length
120200250WF	90mm

**Nylon Slotted Flat Countersunk Screws**

## Thread Size M2 0.4mm Pitch

Product Code	Length
121020005	5mm
121020006	6mm
121020008	8mm
121020010	10mm
121020012	12mm
121020016	16mm
121020020	20mm
121020025	25mm

## Thread Size M2.5 0.45mm Pitch

Product Code	Length
121025004	4mm
121025005	5mm
121025006	6mm
121025008	8mm
121025010	10mm
121025012	12mm
121025016	16mm
121025020	20mm
121025025	25mm

## Thread Size M3 0.5mm Pitch

Product Code	Length
121030005	5mm
121030006	6mm
121030008	8mm
121030010	10mm
121030012	12mm
121030016	16mm
121030020	20mm
121030025	25mm
121030030	30mm
121030045	45mm
121030055	55mm

## Thread Size M3.5 0.6mm Pitch

Product Code	Length
121035005	5mm
121035008	8mm
121035010	10mm
121035012	12mm
121035016	16mm
121035020	20mm
121035025	25mm
121035035	35mm

## Thread Size M4 0.7mm Pitch

Product Code	Length
121040006	6mm
121040008	8mm
121040010	10mm
121040012	12mm
121040016	16mm
121040020	20mm
121040025	25mm
121040030	30mm
121040035	35mm

## Thread Size M5 0.8mm Pitch

Product Code	Length
121050006	6mm
121050008	8mm
121050010	10mm
121050012	12mm
121050016	16mm
121050020	20mm
121050025	25mm
121050030	30mm
121050040	40mm

## Thread Size M6 1.00mm Pitch

Product Code	Length
121060008	8mm
121060010	10mm

## Thread Size M8 1.25mm Pitch

Product Code	Length
121080020	20mm
121080025	25mm

## Thread Size M10 1.50mm Pitch

Product Code	Length
121100020	20mm
121100025	25mm

121060012	12mm	121080030	30mm	121100030	30mm
121060016	16mm	121080040	40mm	121100035	35mm
121060020	20mm	121080050	50mm	121100050	50mm
121060025	25mm				
121060030	30mm	Thread Size M12 1.75mm Pitch		Thread Size M16 2.00mm Pitch	
121060035	35mm	Product Code	Length	Product Code	Length
121060040	40mm	121120050	50mm	121160050	50mm
121060045	45mm	121120095	95mm		
121060050	50mm				
121060060	60mm				



## Nylon Slotted Panhead Screws

Thread Size M2 0.4mm Pitch

Product Code	Length
123020005	5mm
123020006	6mm
123020008	8mm
123020010	10mm
123020012	12mm
123020016	16mm
123020020	20mm
123020025	25mm

Thread Size M2.5 0.45mm Pitch

Product Code	Length
123025005	5mm
123025006	6mm
123025008	8mm
123025010	10mm
123025012	12mm
123025016	16mm
123025020	20mm
123025025	25mm

Thread Size M3 0.5mm Pitch

Product Code	Length
123030004	4mm
123030005	5mm
123030006	6mm
123030008	8mm
123030010	10mm
123030012	12mm
123030016	16mm
123030020	20mm
123030025	25mm
123030030	30mm

Thread Size M3.5 0.6mm Pitch

Product Code	Length
123035006	6mm
123035008	8mm
123035010	10mm
123035012	12mm
123035016	16mm
123035020	20mm
123035025	25mm
123035035	35mm

Thread Size M4 0.7mm Pitch

Product Code	Length
123040006	6mm
123040008	8mm
123040010	10mm
123040012	12mm
123040016	16mm
123040020	20mm
123040025	25mm
123040030	30mm
123040035	35mm
123040040	40mm

Thread Size M5 0.8mm Pitch

Product Code	Length
123050006	6mm
123050008	8mm
123050010	10mm
123050012	12mm
123050016	16mm
123050020	20mm
123050025	25mm
123050030	30mm
123050035	35mm
123050040	40mm
123050050	50mm

Thread Size M6 1.00mm Pitch

Product Code	Length
123060005	5mm
123060008	8mm
123060010	10mm
123060012	12mm
123060016	16mm
123060020	20mm
123060025	25mm
123060030	30mm
123060035	35mm

Thread Size M8 1.25mm Pitch

Product Code	Length
123080010	10mm
123080016	16mm
123080020	20mm
123080025	25mm
123080030	30mm
123080035	35mm
123080040	40mm
123080050	50mm
123080060	60mm

Thread Size M10 1.50mm Pitch

Product Code	Length
123100016	16mm
123100020	20mm
123100025	25mm
123100030	30mm
123100035	35mm
123100040	40mm
123100050	50mm
123100060	60mm

123060040	40mm	123080070	70mm
123060045	45mm	123080080	80mm
123060050	50mm		
123060060	60mm		
123060070	70mm		
123060075	75mm		
123060080	80mm		



## Nylon Special Screws

### Grub Screws

#### Thread Size M3 0.5mm Pitch

Product Code	Length
124030008	8mm

#### Thread Size M4 0.7mm Pitch

Product Code	Length
124040006	6mm
124040008	8mm
124040010	10mm
124040012	12mm
124040016	16mm

#### Thread Size M5 0.8mm Pitch

Product Code	Length
124050006	6mm
124050008	8mm
124050010	10mm
124050012	12mm
124050016	16mm
124050020	20mm

#### Thread Size M6 1.00mm Pitch

Product Code	Length
124060005	5mm
124060006	6mm
124060008	8mm
124060012	12mm
124060016	16mm
124060020	20mm

### Roundhead Screws

#### Thread Size M6

Product Code	Length
126060020	20mm

### Grub Screws

#### Thread Size M8 1.25mm Pitch

Product Code	Length
124080010	10mm
124080016	16mm
124080020	20mm
124080025	25mm

#### Thread Size M10 1.75mm Pitch

Product Code	Length
124100016	16mm
124100019	19mm
124100020	20mm
124100025	25mm
124100030	30mm

#### Thread Size M12 1.75mm Pitch

Product Code	Length
124120015	15mm
124120020	20mm

#### Thread Size M16 2.00mm Pitch

Product Code	Length
124160020	20mm

### Socket Caphead Screws

#### Thread Size M6 1.00mm Pitch

Product Code	Length
128060016	16mm
128060030	30mm

#### Thread Size M8 1.25mm Pitch

Product Code	Length
--------------	--------

### Thumb Screws

#### Thread Size M3 0.5mm Pitch

Product Code	Length
125030012	12mm
125030016	16mm
125030020	20mm

#### Thread Size M4 0.7mm Pitch

Product Code	Length
125040008	8mm
125040010	10mm
125040025	25mm

#### Thread Size M5 0.8mm Pitch

Product Code	Length
125050016	16mm

#### Thread Size M6 1.00mm Pitch

Product Code	Length
125060020	20mm
125060035	35mm

### Mushroom Head Screws

#### Thread Size M5 0.8mm Pitch

Product Code	Length
127050005	5mm
127050016	16mm
127050020	20mm

#### Thread Size M6 1.00mm Pitch

128080020	20mm	Product Code	Length
		127060010	10mm
Thread Size M12 1.75mm Pitch		127060012	12mm
Product Code	Length	127060016	16mm
128120060	60mm	127060020	20mm
		127060025	25mm
		127060030	30mm
		127060040	40mm
		127060080	80mm



## Ancillary Parts & BA Thread Forms

Ratchet Rivet  
Panel Thickness 8-12  
Product Code    Description  
1580002            7mm

Canoe Clips  
1420000BLK    1420000WHT

Serrated Fasteners  
  
1410000BLK    1410000WHT  
1410001BLK    1410001WHT

Push In  
Available in many sizes

Nylon 6.6 Combined  
Nut/Washers  
Product Code    Thread Size  
31380060            6BA  
1380040            4BA  
1380020            2BA  
1380000            0BA

Nylon 6.6 Washers  
Product Code    Thread Size  
1390080            8BA  
1390060            6BA  
1390040            4BA  
1390020            2BA  
1390000            0BA

Panel Screws  
Product Code    Size  
11710            M10  
11712            M12  
11716            M16

**Any Length Available**

Nylon 6.6 Number Plate Screws  
Thread Size M6 1.0mm Pitch  
Product Code    Length  
118060020BLK    20mm  
118060020WHT    20mm  
118060020YEL    20mm  
118060025BLK    25mm  
118060025WHT    25mm  
118060026YEL    26mm

**Sold in sets of screws with  
combined  
nut/washers.**

H.D.P.E. Number Plate Screw  
Covers  
1180000BLK    1180000WHT  
1180000YEL

Nylon Slotted Cheesehead  
Screws  
Product Code    Length  
Thread Size 8BA  
1370800250            1/4  
1370800375            3/8  
1370800500            1/2  
1370800625            5/8  
1370800750            3/4  
1370801000            1  
1370801125            1 1/8  
Thread Size 6BA  
1370600250            1/4  
1370600375            3/8  
1370600500            1/2  
1370600750            3/4  
1370601000            1

Polythene Hygiene Nut Covers  
To suit M10, M12, M16

Cable Ties & Mounts  
Cradle Mounts available in  
19mm & 26mm sq  
Ties available from:  
2.5 up to 200LG  
3.6 up to 370LG  
4.8 up to 430LG

Nylon 6.6 two-part Anchor  
Rivets  
  
Size            Product Code  
1/4 x 3/4' long    10925075

Binder Post and Cap  
Available in many sizes

Nylon Slotted Cheesehead  
Screws  
Product Code    Length  
Thread Size 4BA  
1370400250            1/4  
1370400375            3/8  
1370400500            1/2  
1370400750            3/4  
1370401000            1  
Thread Size 2BA  
1370200375            3/8  
1370200500            1/2  
1370200750            3/4  
1370201000            1  
1370201250            1 1/4  
Thread Size 0BA  
1370000500            1/2  
1370000750            3/4  
1370001000            1  
1370001250            1 1/4

Combined Nut/Washer					
Product Code	Thread Size	Pitch	Thickness	Washer Diameter	Across Flats
1140100	M10	1.50	9.5	22.0	17.0
1140120	M12	1.75	14.5	27.0	19.0
1140160	M16	2.00	19.5	39.0	24.0

Nylon 6.6 Load Bearing Washers				
Size	Inside Diameter	Outside Diameter	Thickness	Product Code
M10	10.5	50.0	3.0	1660100
M12	13.0	50.0	3.0	1660120
M16	17.0	80.0	3.0	1660160