

MICRO SWITCH

FREEPORT ILLINOIS, U.S.A
A DIVISION OF HONEYWELL
FED. MFG. CODE 91929

SWITCH - BASIC

CATALOG LISTING
ISE119

ISE119
PAGE 1 OF 1

M

DRAWING NUMBER
3

ISSUE
2

CHECK

REVISIONS

A PR-15159

JAS
24 OCT 86

B C095210

DLM
25 MAY 99

CHECK

CHECK

CHECK

CHECK

CHECK

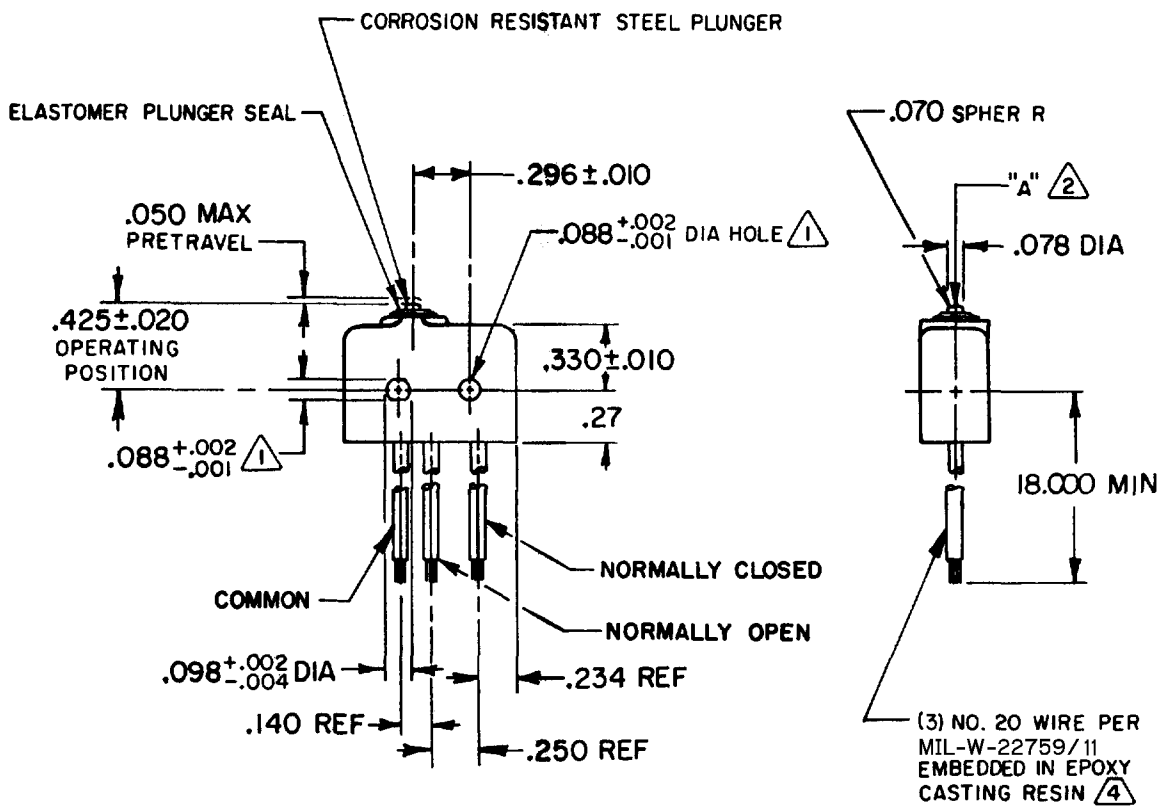
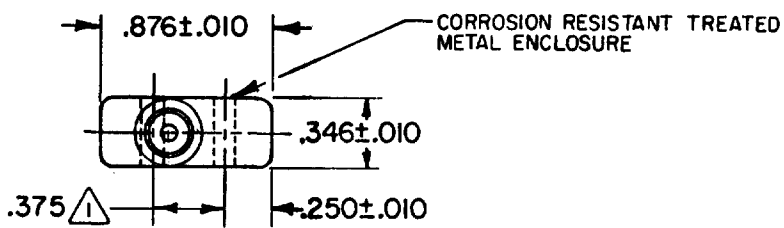
CHECK

CHECK

CHECK

FORMITEK
FO-52848-A

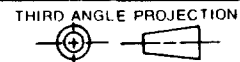
REPLACES
RELEASE NO. PR-15159
CHECK
NOV 86
4
J A S 24 OCT 86
DRAWN



NOTES

- ① MOUNTING HOLES WILL ACCEPT .087 MAX DIA PINS OR SCREWS ON .375±.002 CENTERS
- ② ACTUATION IN LINE WITH ARROW "A" IS RECOMMENDED
- ③ WEIGHT OF SWITCH ONLY IS .26 OZ MAX WEIGHT OF SWITCH WITH WIRE LEADS IS .65 OZ MAX
- 4 - BASIC SWITCH HAS 24K SOLID GOLD CONTACT MATERIAL

THIS DRAWING COVERS A PROPRIETARY ITEM AND IS THE PROPERTY OF MICRO SWITCH, A DIVISION OF HONEYWELL. THIS DRAWING IS NOT TO BE COPIED OR USED WITHOUT THE APPROVAL OF MICRO SWITCH.



CHARACTERISTICS	
OPERATING FORCE-----	5-17 OZ
RELEASE FORCE-----	4 OZ MIN
RELEASE TRAVEL-----	.004 MIN
DIFFERENTIAL TRAVEL-----	.004 MAX
OVERTRAVEL-----	.003 MIN

ELECTRICAL DATA	
CONTACT ARRANGEMENT S P D T	
10 VDC -----	0.5 AMP
30 VOLTS DC RATING	
INDUCTIVE-----SEA LEVEL----	1/2 AMP
50,000 FT-----	1/2 AMP
RESISTIVE-----SEA LEVEL-----	1 AMP
50,000 FT-----	1 AMP
MAXIMUM INRUSH-----2 AMP	

SCALE FULL			
DO NOT SCALE PRINT			
TOLERANCES			
APPLY TO DESIGN UNITS. CONVERSIONS ARE ONLY FOR REFERENCE. UNLESS NOTED, TOLERANCES ARE Z			
DIM.	TOL.	DIM.	TOL.
mm	mm/in	in	mm/in
NO PLACES	X	1/04	
ONE PLACE	X,X	0.4/018	X X 0.8/03
TWO PLACES	X,XX	0.15/006	X XX 0.38/015
THREE PLACES	X,XXX		X XXX 0.13/005
ANGLES			
SI METRIC		US CUSTOMARY	
DESIGN UNITS	<input type="checkbox"/>	<input checked="" type="checkbox"/>	
WEIGHT ③			

Mouser Electronics

Authorized Distributor

Click to View Pricing, Inventory, Delivery & Lifecycle Information:

[Honeywell:](#)

[1SE119](#)