

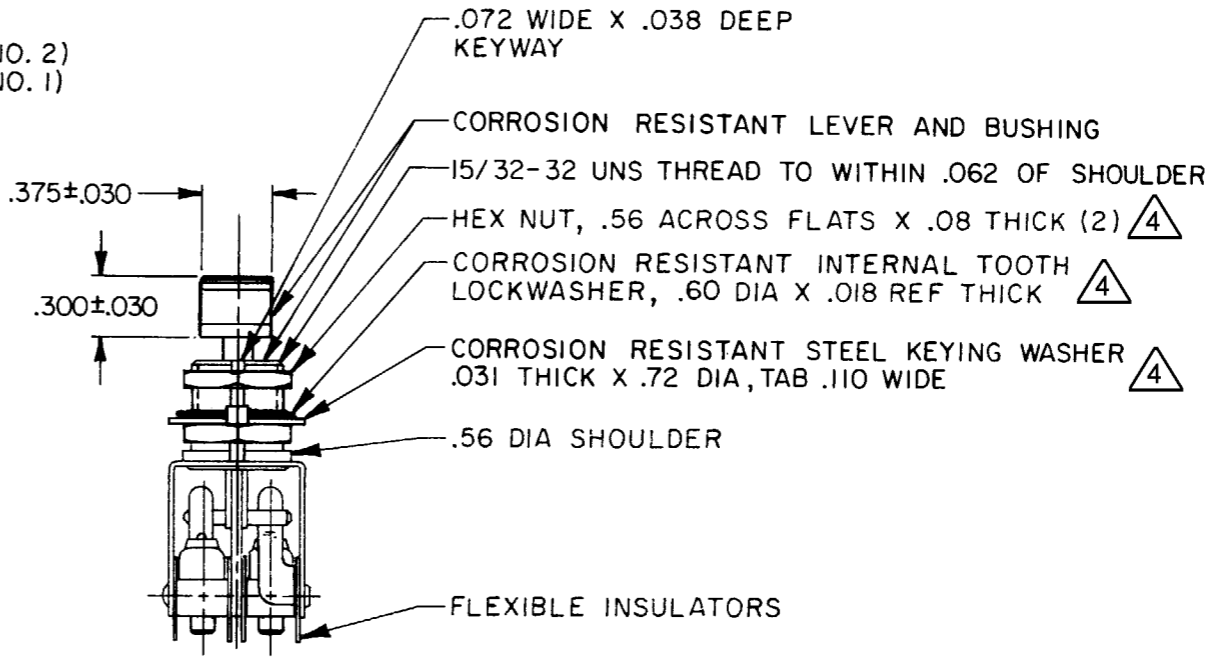
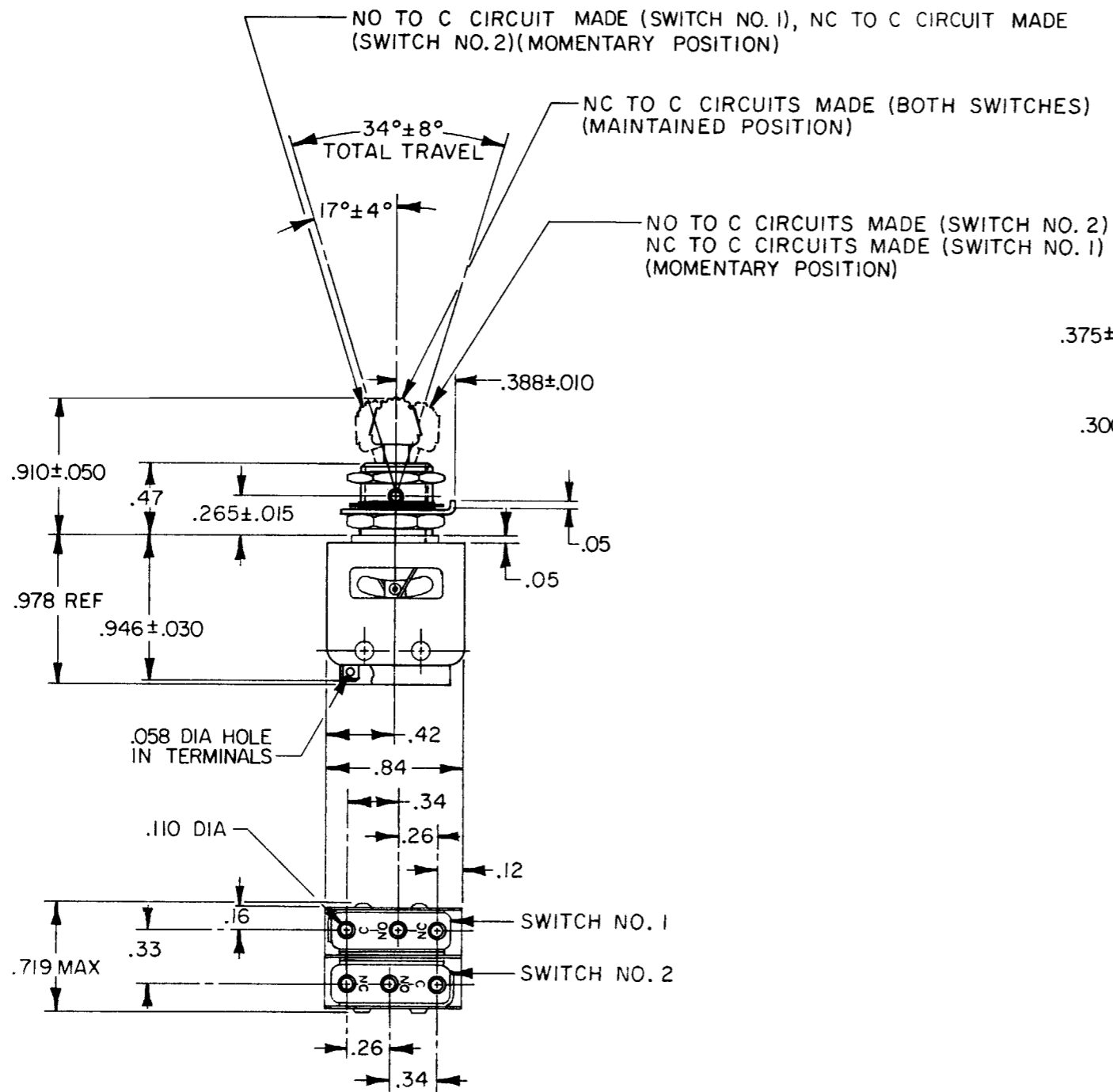
MICRO SWITCH
 FREEPORT, ILLINOIS, U.S.A.
 A DIVISION OF HONEYWELL
 FED. MFG. CODE 91929

**ASSEMBLY -
 TOGGLE SWITCH**

CATALOG LISTING
13AT66

CATALOG LISTING
13AT66
 PAGE 1 OF 1
 ISSUE **M**
 9
 REVISIONS
 A CO52725 R J H 24 MAY 83
 B CO56281 G J W 28 SEP 85
 C CO66089 D A W 13 FEB 91
 D 205419 CSL 24 APR 02
 CHECK G L J 31 MAY 83
 RASTER
 FO-92851-B
 DRAWN
 R J H 24 MAY 83

REPLACES
 SR-8823



- NOTES**
- 1 - UNIT INCLUDES CAT. LIST. "1SM1" TYPE BASIC SWITCH (2)
 - 2 - TERMINALS ARE PLATED FOR SOLDERING
 - 3 - KNOB PORTION OF TOGGLE LEVER BLACK ANODIZED
 - 4 - HARDWARE FURNISHED ASSEMBLED WITH SWITCH OR IN PACKET PER MIL-PRF-8805
 - 5 - REPLACEMENT MOUNTING HARDWARE PACKET 15PA312-AT

THIS DRAWING COVERS A PROPRIETARY ITEM AND IS THE PROPERTY OF MICRO SWITCH, A DIVISION OF HONEYWELL. THIS DRAWING IS NOT TO BE COPIED OR USED WITHOUT THE APPROVAL OF MICRO SWITCH.

SCALE FULL

DO NOT SCALE PRINT

TOLERANCES
 APPLY TO DESIGN UNITS. CONVERSIONS ARE ONLY FOR REFERENCE. UNLESS NOTED, TOLERANCES ARE ±

DIM.	TOL.	DIM.	TOL.
mm	mm/in	in	mm/in
NO PLACES	X	17.04	
ONE PLACE	X, X	0.41/0.18	X, X 0.81/0.05
TWO PLACES	X, XX	0.157/0.008	X, XX 0.381/0.015
THREE PLACES	X, XXX		X, XXX 0.13/0.005

DESIGN UNITS SI METRIC US CUSTOMARY

THIRD ANGLE PROJECTION

WEIGHT

CHARACTERISTICS	ELECTRICAL DATA
	CONTACT ARRANGEMENT S P D T (2)
	250 VAC ----- 5 AMP
	30 VOLTS DC RATING
	INDUCTIVE ----- SEA LEVEL --- 3 AMP 50,000 FT --- 2.5 AMP
	RESISTIVE ----- SEA LEVEL --- 5 AMP 50,000 FT --- 5 AMP
	MAXIMUM INRUSH ----- 24 AMP