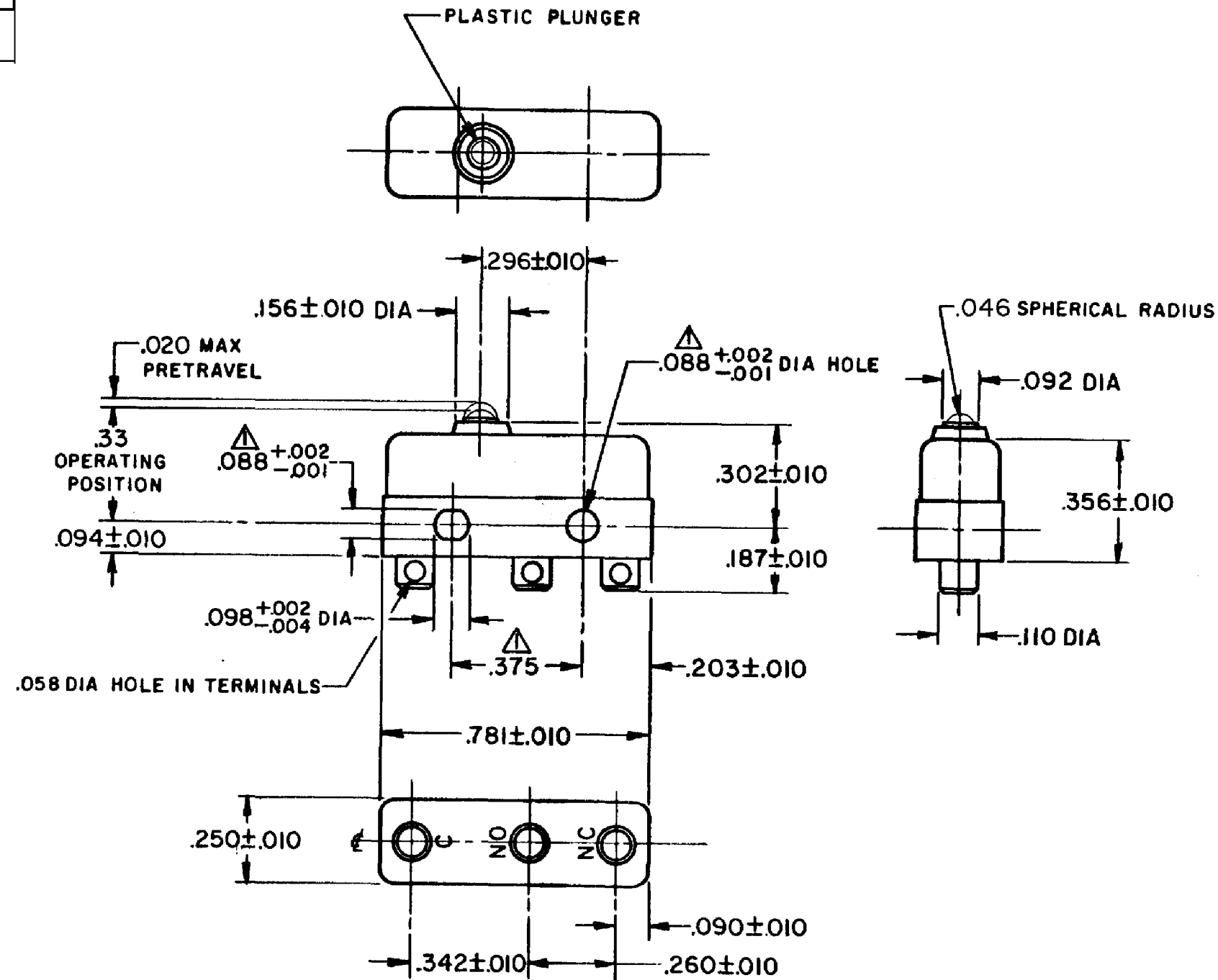


HONEYWELL
PART NUMBER
12SM825
PRODUCT CODE
TXA8295

REV	DOCUMENT	CHANGED BY	CHECK
6	0038111	PK 20MAY08	ASD



NOTE -

- △-MOUNTING HOLES WILL ACCEPT PINS OR SCREWS OF .087 MAX DIA ON .375 ± .002 CENTERS
- 2-TERMINALS ARE PLATED FOR SOLDERING
- 3-SWITCH WILL WITHSTAND TEMPERATURE OF 300°F
- 4-CONTACT MATERIAL-24 K GOLD PLATED

RELEASE NO. PR - 2786

REPLACES -

CHARACTERISTICS	
OPERATING FORCE - - - -	3 OZ MAX
RELEASE FORCE - - - - -	1 OZ MIN
DIFFERENTIAL TRAVEL - - -	.002 MAX
OVERTRAVEL - - - - -	.003 MIN

ELECTRICAL DATA		
CONTACT ARRANGEMENT SPDT		
30 VOLTS DC RATING		
	SEA LEVEL	50,000 FT
INDUCTIVE	1/2 AMP	1/2 AMP
RESISTIVE	1 AMP	1 AMP
MAXIMUM INRUSH 2 AMP		
APPROVALS	KEMA, CE	1A, 250V ~ T85 1E4
	UL, CSA	1A, 125 VAC 30 VDC

DESIGN UNITS: INCH	
TOLERANCES UNLESS NOTED:	
NO PLACE	X ±
ONE PLACE	.X ±
TWO PLACE	.XX ±
THREE PLACE	.XXX ±
FOUR PLACE	.XXXX ±
ANGLES	±
THIRD ANGLE PROJECTION	

DRAWN	VK	17OCT07
CHECK	RJ	17OCT07
THIS DRAWING COVERS A PROPRIETARY ITEM AND IS THE PROPERTY OF HONEYWELL. THIS DRAWING IS NOT TO BE COPIED OR USED WITHOUT THE PERMISSION OF HONEYWELL.		
INTERPRET PER ANSI Y14.5M-1982 OTHER HONEYWELL ENGINEERING STANDARDS MAY APPLY		
RASTER		

Honeywell			
TITLE SWITCH - BASIC			
SIZE	TYPE	DRAWING NAME	REV
B	I	12SM825	6
SCALE	-	WEIGHT .006LB MAX	SHEET 1 OF 1